

WAAS CH 62924 W05A	APP CRS 049°	Rwy Idg TDZE 483 Apt Elev 489	5015
--	------------------------	---	-------------

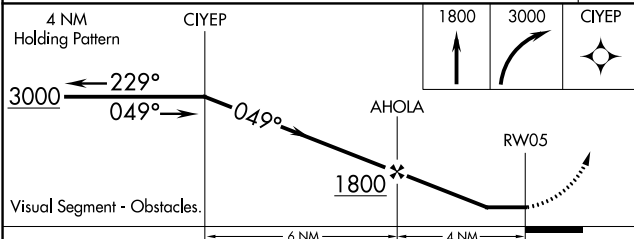
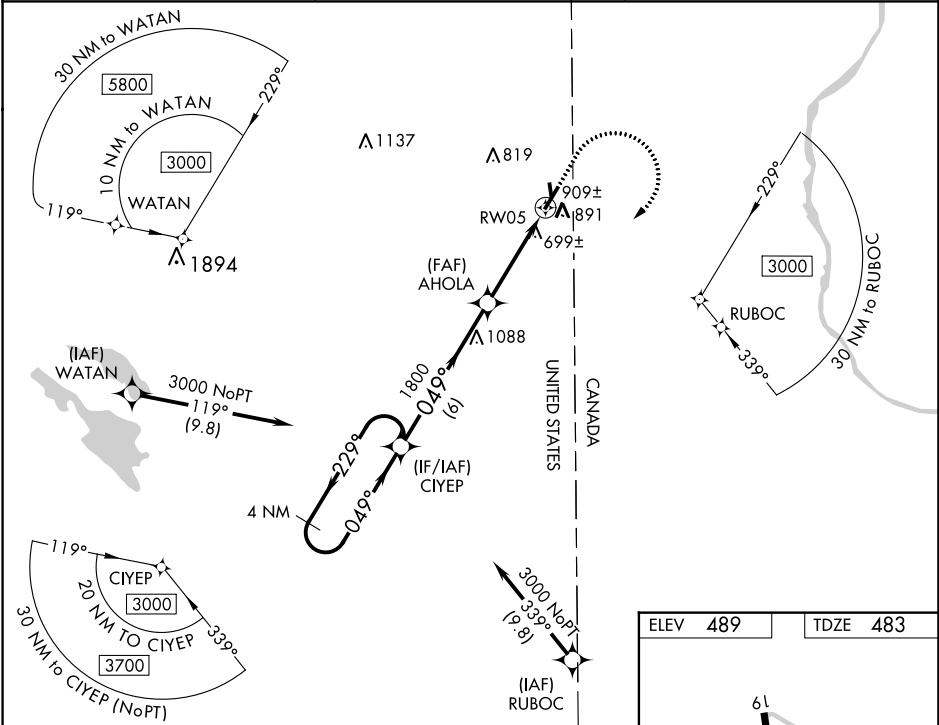
RNAV (GPS) RWY 5

HOULTON INTL (HUL)

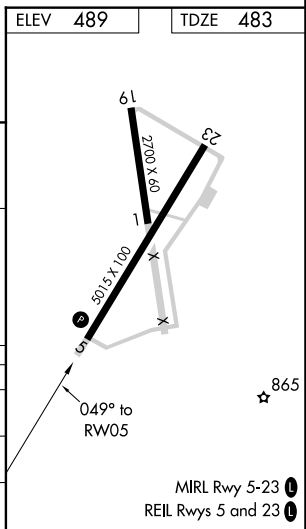
⚠ When local altimeter setting not received, use Presque Isle altimeter setting increase all MDA 100 feet; increase LP Cat C, LNAV Cat B and Circling Cat B visibility ¼ mile; increase LNAV Cat C visibility ⅓ mile; increase Circling Cat C visibility ⅔ mile. Circling NA southeast of Rwy 5-23. DME/DME RNP-0.3 NA. Helicopter visibility reduction below ¾ SM NA.

MISSED APPROACH: Climb to 1800 then climbing right turn to 3000 direct CIYEP and hold.

ASOS 132.025	BOSTON CENTER 120.25 346.4	UNICOM 122.8 (CTAF)
------------------------	--------------------------------------	-------------------------------



CATEGORY	A	B	C	D
LP MDA	960-1	477 (500-1)	960-1 ⅓ 477 (500-1 ⅓)	NA
LNAV MDA	1140-1	657 (700-1)	1140-1 ⅔ 657 (700-1 ⅔)	NA
CIRCLING	1140-1	651 (700-1)	1140-1 ⅔ 651 (700-1 ⅔)	NA



NE-1, 22 FEB 2024 to 21 MAR 2024

NE-1, 22 FEB 2024 to 21 MAR 2024

APP CRS	Rwy Idg	N/A
168°	TDZE	N/A
	Apt Elev	489

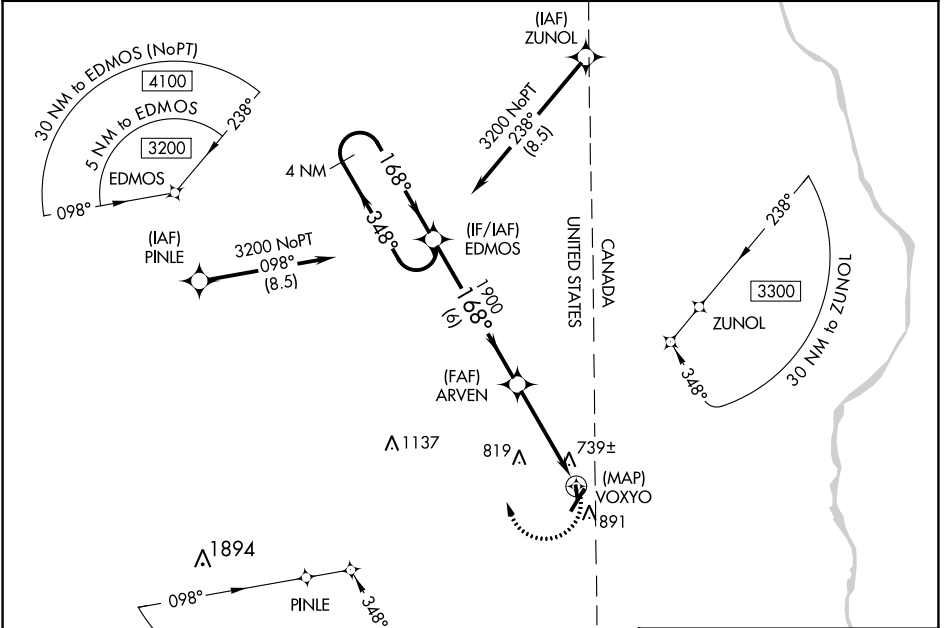
RNAV (GPS)-A

HOULTON INTL (HUL)

⚠ When local altimeter setting not received, use Presque Isle altimeter setting and increase all MDA 100 feet and visibility Cat C ¼ SM. Circling NA southeast of Rwy 5-23. DME/DME RNP-0.3 NA.

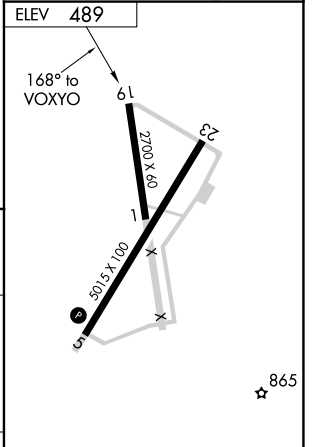
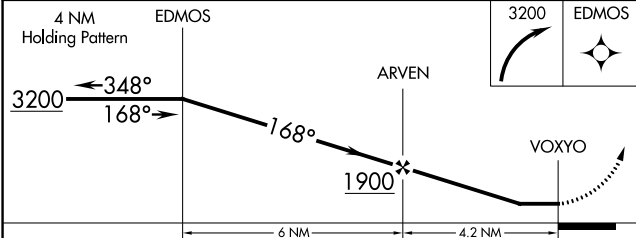
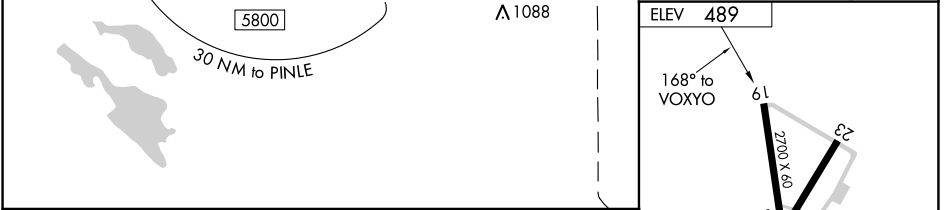
MISSED APPROACH: Climbing right turn to 3200 direct EDMOS and hold.

ASOS 132.025	BOSTON CENTER 120.25 346.4	UNICOM 122.8 (CTAF)
------------------------	--------------------------------------	-------------------------------



NE-1, 22 FEB 2024 to 21 MAR 2024

NE-1, 22 FEB 2024 to 21 MAR 2024



CATEGORY	A	B	C	D
CIRCLING	1080-1	591 (600-1)	1120-1¾ 631 (700-1¾)	NA

MIRL Rwy 5-23 **⓪**
REIL Rwys 5 and 23 **⓪**