

CLOUD-FOUR ALPHA DEPARTURE (CLOUA4•CLOUD)

HOLLOWMAN AFB (KHMN)
ALAMOGORDO, NEW MEXICO

ATIS ★ 273.5
CINC DEL
126.7 289.4
GND CON
127.05 275.8
TOWER ★
119.3 254.4
DEP CON
128.1 284.0
ALBUQUERQUE CENTER
132.65 257.6

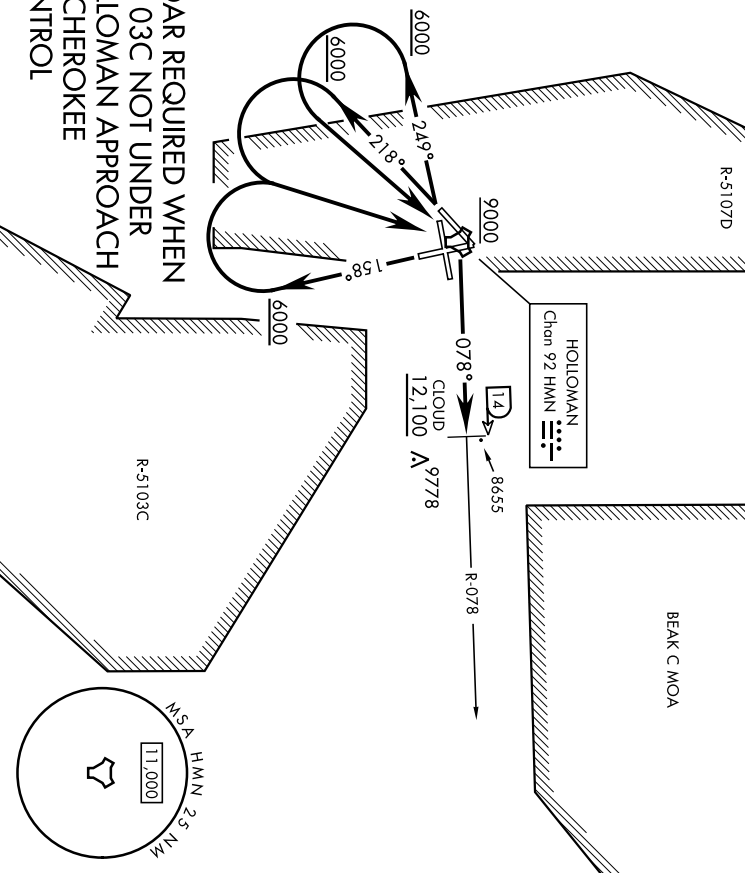
AL-7 [USAF]

Rwy	Knots	60	120	180	240	300	360
16/25	V/V/[gpm]	450	900	1350	1800	2250	2270
22	V/V/[gpm]	440	880	1320	1760	2200	2640

Minimum climb to 12,100

BEAK B MOA

BEAK C MOA



**RADAR REQUIRED WHEN
R-5103C NOT UNDER
HOLLOWMAN APPROACH
OR CHEROKEE
CONTROL**

DEPARTURE ROUTE DESCRIPTION

TAKEOFF RWY 16: Climb on track 158°. When leaving 6000 turn right direct HMN TACAN, then proceed via HMN R-078 to CLOUD (HMN R-078/14), then via assigned routing. Cross HMN at or above 9000. Cross CLOUD at or above 12,100.

TAKEOFF RWY 22: Climb on track 218°. When leaving 6000 turn left direct HMN TACAN, then proceed via HMN R-078 to CLOUD (HMN R-078/14), then via assigned routing. Cross HMN at or above 9000. Cross CLOUD at or above 12,100.

TAKEOFF RWY 25: Climb on track 249°. When leaving 6000 turn left direct HMN TACAN, then proceed via HMN R-078 to CLOUD (HMN R-078/14), then via assigned routing. Cross HMN at or above 9000. Cross CLOUD at or above 12,100.

CLOUD-FOUR ALPHA DEPARTURE (CLOUA4•CLOUD)

Amth 1 10AUG23

ALAMOGORDO, NEW MEXICO
HOLLOWMAN AFB (KHMN)

CLOUD-FOUR BRAVO (RNAV) DEPARTURE (CLOUB4•CLOUD)

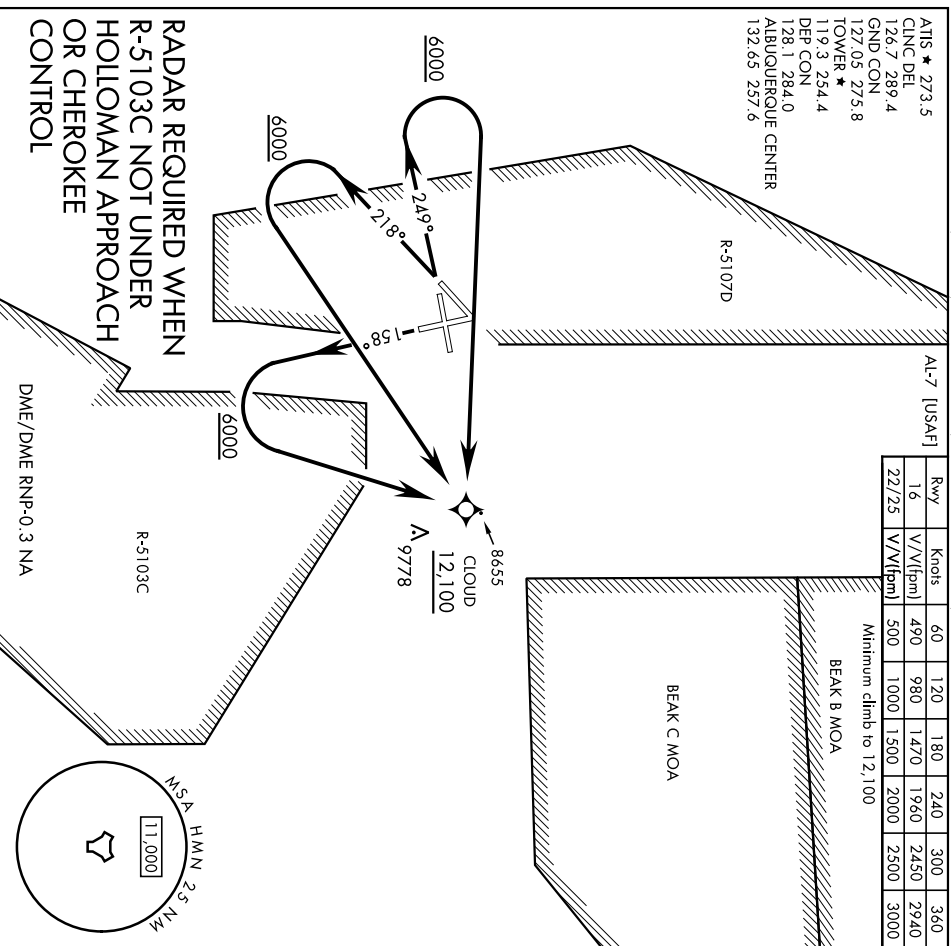
HOLLOWMAN AFB (KHMN)
ALAMOGORDO, NEW MEXICO

Rwy	Knobs	60	120	180	240	300	360
16	V/V(I)pm	490	980	1470	1960	2450	2940
22/25	V/V(H)pm	500	1000	1500	2000	2500	3000

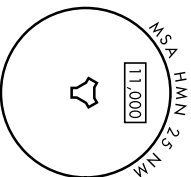
Minimum climb to 12,100

BEAK B MOA

ATIS * 273.5
 CLNC DEL
 126.7 289.4
 GND CON
 127.05 275.8
 TOWER *
 119.3 254.4
 DEP CON
 128.1 284.0
 ALBUQUERQUE CENTER
 132.65 257.6



**RADAR REQUIRED WHEN
R-5103C NOT UNDER
HOLLOWMAN APPROACH
OR CHEROKEE
CONTROL**



DEPARTURE ROUTE DESCRIPTION

- TAKEOFF RWY 16:** Climb on track 158°. When leaving 6000 turn left direct CLOUD then via assigned routing. Cross CLOUD at or above 12,100.
- TAKEOFF RWY 22:** Climb on track 218°. When leaving 6000 turn left direct CLOUD then via assigned routing. Cross CLOUD at or above 12,100.
- TAKEOFF RWY 25:** Climb on track 249°. When leaving 6000 turn right direct CLOUD then via assigned routing. Cross CLOUD at or above 12,100.

CLOUD-FOUR BRAVO (RNAV) DEPARTURE (CLOUB4•CLOUD)

Amth 1 10AUG23

ALAMOGORDO, NEW MEXICO
HOLLOWMAN AFB (KHMN)

DIEZL ONE DEPARTURE

AL-7 [USAF]

HOLLOMAN AFB (KHMN)
ALAMOGORDO, NEW MEXICO

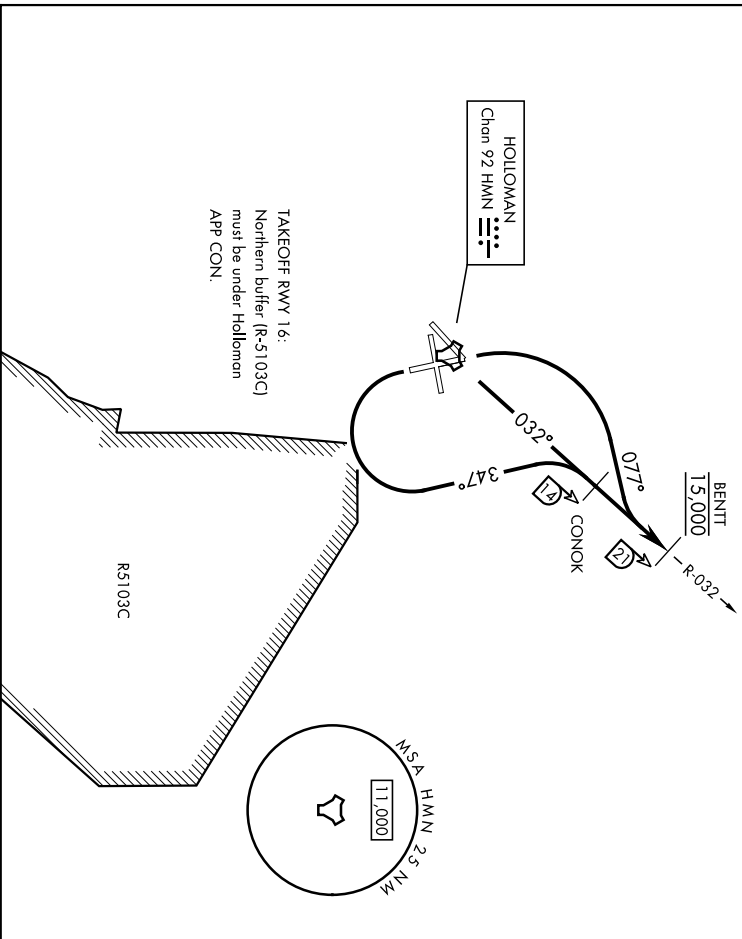
Rwy	Knots	60	120	180	240	300	360
04	V/V(fpm)	350	700	1050	1400	1750	2100
16	V/V(fpm)	492	984	1476	1968	2460	2952
34	V/V(fpm)	350	700	1050	1400	1750	2100

Minimum Climb Rate

- to 9300
- to 11,700

ALTS * 273.5
CLNC DEL
126.7 289.4
GND CON 3
127.05 275.8
TOWER *
119.3 254.4
DEP CON
128.1 284.0
ALBUQUERQUE CENTER
132.65 257.6

MILITARY USE ONLY



TAKEOFF RWY 16:
Northern buffer (R-5103C)
must be under HOLLOWAN
APP CON.

DEPARTURE ROUTE DESCRIPTION

TAKEOFF RWY 4: Climb direct BENTT, cross BENTT at 15,000.

TAKEOFF RWY 16: Climbing left turn to track 347°, intercept HMN R-032 direct CONOK, depart CONOK direct BENTT. Cross BENTT at 15,000.

TAKEOFF RWY 34: Climbing right turn on track 077°, intercept HMN R-032 direct BENTT, cross BENTT at 15,000.

DIEZL ONE DEPARTURE

Amhd 1 10AUG23

ALAMOGORDO, NEW MEXICO
HOLLOWAN AFB (KHMN)

IZZYY ONE DEPARTURE (RNAV) (IZZYY•IZZYY)

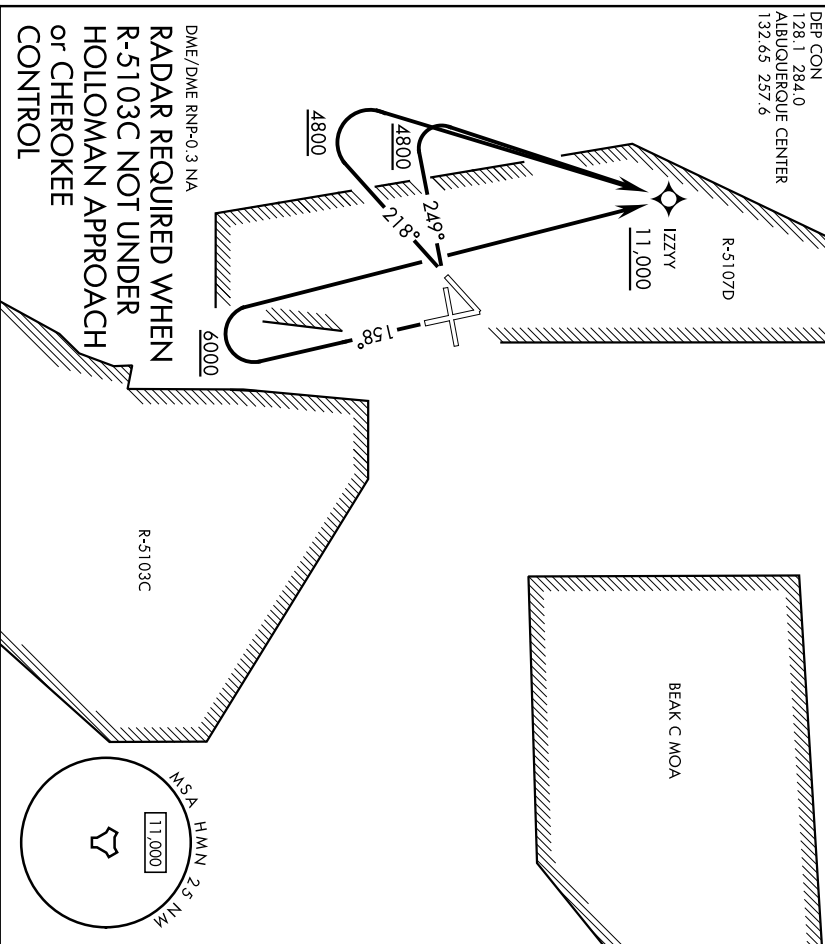
HOLLOWMAN AFB (KHMN)
ALAMOGORDO, NEW MEXICO

ATIS * 273.5 RNAV1 - GNSS
CINC DEL 126.7 289.4
GND CON 127.05 275.8
TOWER * 119.3 254.4
DEP CON 128.1 284.0
ALBUQUERQUE CENTER 132.65 257.6

AL-7 [USAFI]

Rwy	Knots	60	120	180	240	300	360
16	V/V(fpm)	425	850	1275	1700	2125	2550
22	V/V(fpm)	416	832	1248	1664	2080	2496
25	V/V(fpm)	480	960	1440	1920	2400	2880

Minimum climb to 11,000



**DME/DME RNP-0.3 NA
RADAR REQUIRED WHEN
R-5103C NOT UNDER
HOLLOWMAN APPROACH
OR CHEROKEE
CONTROL**

▼ DEPARTURE ROUTE DESCRIPTION

- TAKEOFF RWY 16: Climb on track 158° when leaving 6000 turn right direct IZZYY, then via assigned routing. Cross IZZYY at or above 11,000.
- TAKEOFF RWY 22: Climb on track 218° when leaving 4800 turn right direct IZZYY, then via assigned routing. Cross IZZYY at or above 11,000.
- TAKEOFF RWY 25: Climb on track 249° when leaving 4800 turn right direct IZZYY, then via assigned routing. Cross IZZYY at or above 11,000.

IZZYY ONE DEPARTURE (RNAV) (IZZYY1•IZZYY)

Amddt 10AUG23

ALAMOGORDO, NEW MEXICO
HOLLOWMAN AFB (KHMN)

OHDEE ONE DEPARTURE

HOLLOWMAN AFB (KHMN)
ALAMOGORDO, NEW MEXICO

Alt-7 [USAF]

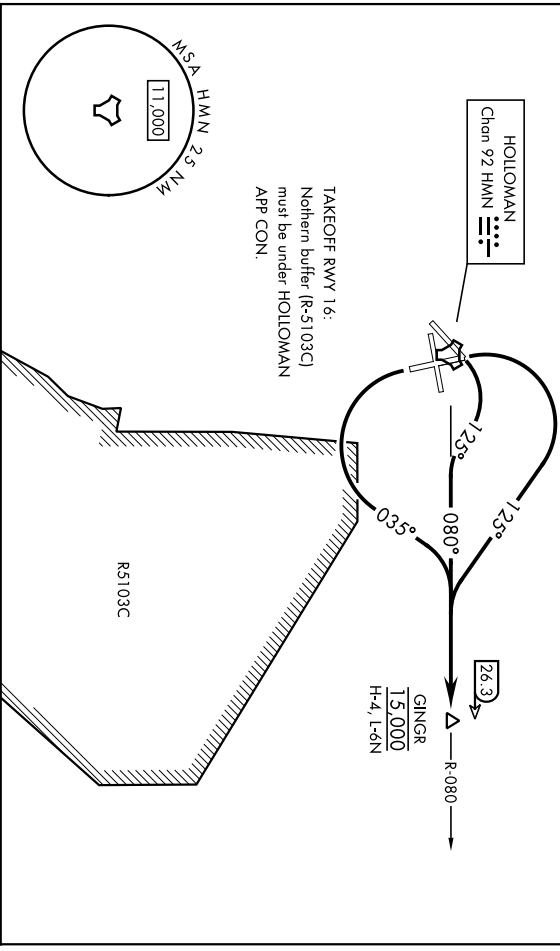
Rwy	Knots	60	120	180	240	300	360
04	Ⓢ V/V/[fpm]	477	954	1431	1908	2385	2862
16	Ⓢ V/V/[fpm]	501	1002	1503	2004	2505	3006
34	Ⓢ V/V/[fpm]	458	916	1374	1832	2290	2748

Minimum Climb Rate

- 11,929
- Ⓢ to 11,500
- Ⓢ to 12,000

ATIS * 273.5
 CINCL DEL
 126.7 289.4
 GND CON
 127.05 275.8
 TOWER *
 119.3 254.4
 DEP CON
 128.1 284.0
 ALBUQUERQUE CENTER
 132.65 257.6

MILITARY USE ONLY



TAKEOFF RWY 16:
 Northern buffer (R-5103C)
 must be under HOLLOWMAN
 APP CON.

DEPARTURE ROUTE DESCRIPTION

TAKEOFF RWY 4: Climbing right turn to track 125°, intercept HMN R-080 to GINGR.
 Cross GINGR at 15,000.

TAKEOFF RWY 16: Climbing left turn to track 035°, intercept HMN R-080 to GINGR.
 Cross GINGR at 15,000.

TAKEOFF RWY 34: Climbing right turn to track 125°, intercept HMN R-080 to GINGR.
 Cross GINGR at 15,000.

OHDEE ONE DEPARTURE

Amthl 10AUG23

ALAMOGORDO, NEW MEXICO
HOLLOWMAN AFB (KHMN)