

APP CRS 304°	Rwy Idg 3600
	TDZE 1466
	Apt Elev 1468

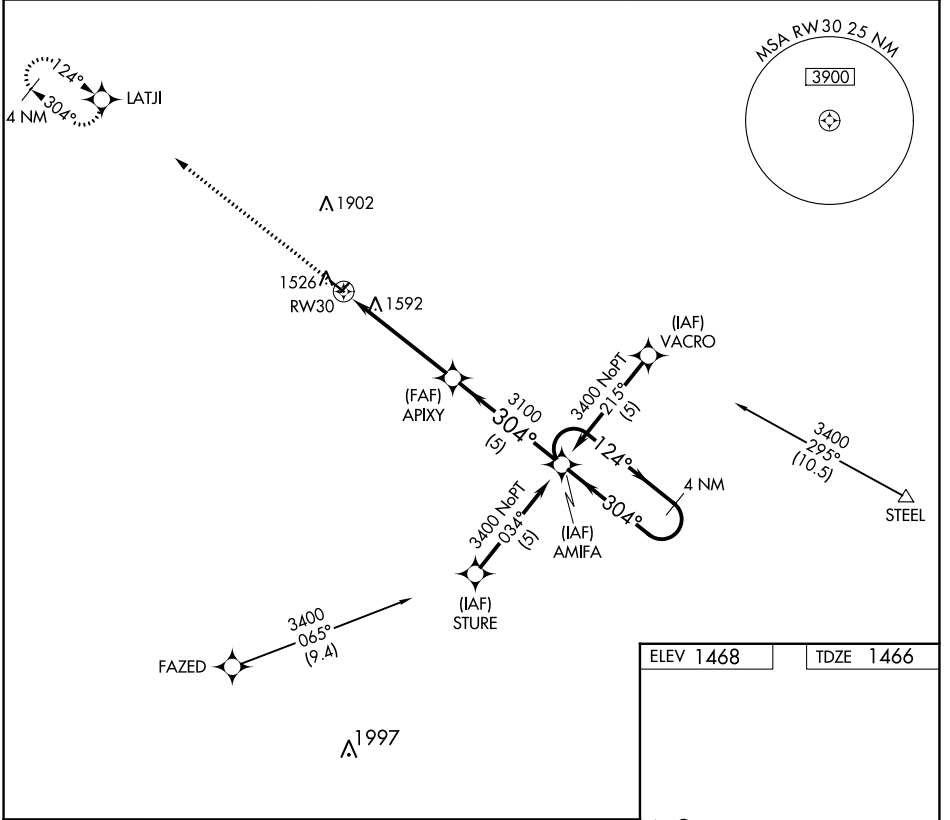
GPS RWY 30

HEBRON MUNI (HJH)

▽ When local altimeter setting not received, use Beatrice altimeter setting.
△ NA Circling Rwy 3, 21 NA. Rwy 30 helicopter visibility reduction below 3/4 SM NA. VDP NA when using Beatrice altimeter setting.

MISSED APPROACH: Climb to 3400 direct LATJI WP and hold.

AWOS-3 118.525	MINNEAPOLIS CENTER 126.4 317.7	CTAF 122.9
--------------------------	--	----------------------

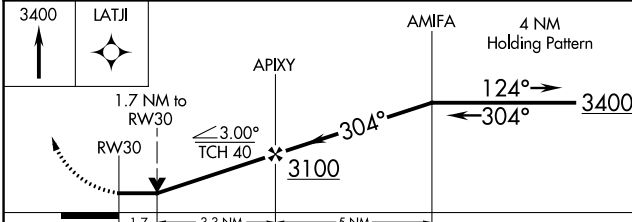


NC-2, 22 FEB 2024 to 21 MAR 2024

NC-2, 22 FEB 2024 to 21 MAR 2024

ELEV 1468	TDZE 1466
-----------	-----------

Detailed runway diagram for RWY 30. Dimensions are 3600 x 60 feet. A parallel runway is 2513 x 150 feet with a 0-7% upward slope. The runway is equipped with MRL Rwy 12-30 and REIL Rwy 12 and 30. The approach angle is 304°.



CATEGORY	A	B	C	D
S-30	2060-1	594 (600-1)		NA
CIRCLING	2100-1	632 (700-1)		NA

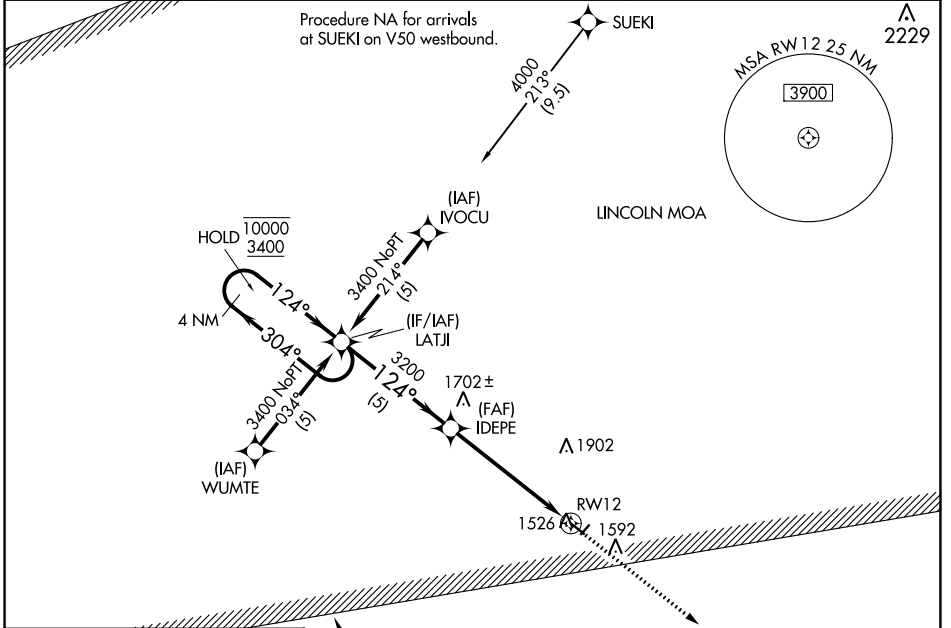
APP CRS 124°	Rwy Idg TDZE Apt Elev	3600 1465 1468
------------------------	-----------------------------	---

RNAV (GPS) RWY 12

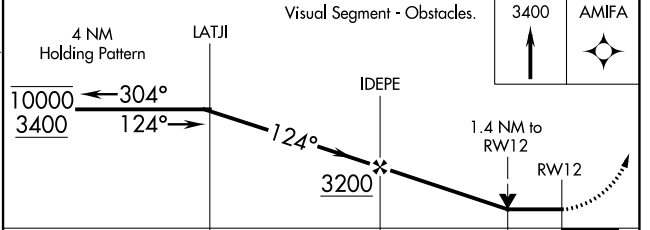
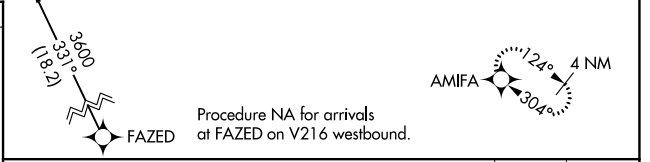
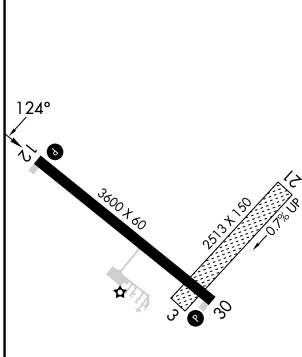
HEBRON MUNI (HJH)

RNP APCH-GPS.	MISSED APPROACH: Climb to 3400 direct AMIFA and hold.
---------------	---

AWOS-3 118.525	MINNEAPOLIS CENTER 126.4 317.7	CTAF 122.9
--------------------------	--	----------------------



ELEV 1468	TDZE 1465
-----------	-----------



CATEGORY	A	B	C	D
LNNAV MDA	2080-1	615 (700-1)	NA	
CIRCLING	2100-1	632 (700-1)	NA	

NC-2, 22 FEB 2024 to 21 MAR 2024

NC-2, 22 FEB 2024 to 21 MAR 2024