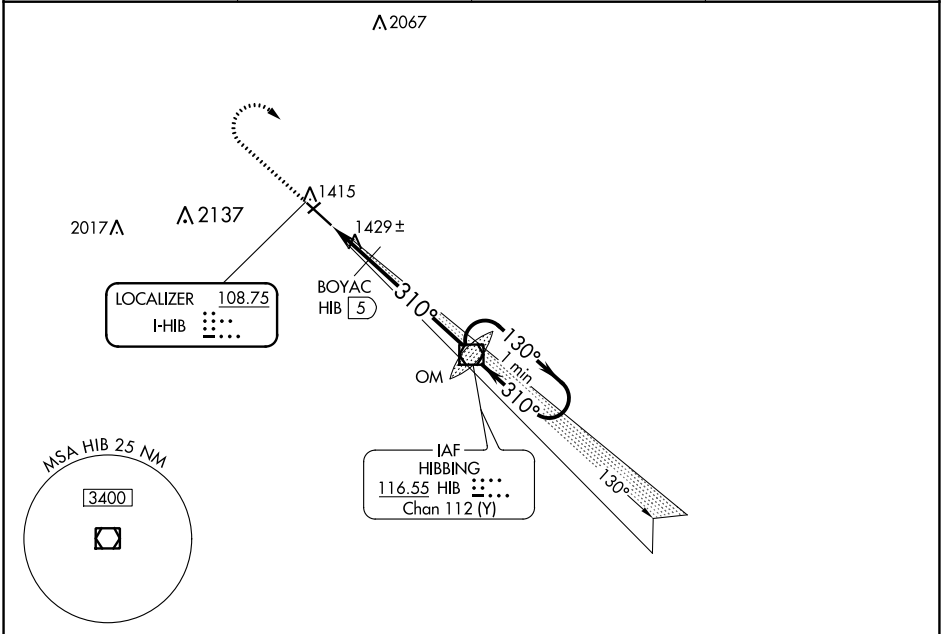


LOC I-HIB <b>108.75</b>	APP CRS <b>310°</b>	Rwy Idg TDZE Apt Elev	<b>6758</b> <b>1343</b> <b>1354</b>
----------------------------	------------------------	-----------------------------	---

# ILS or LOC RWY 31

RANGE RGNL (HIB)

<p>▼ For inop MALS, increase BOYAC FIX minimums S-LOC 31 Cat D visibility to 1. # DME from HIB VOR/DME.</p>	<p>MALS</p>	<p>MISSED APPROACH: Climb to 2500 then climbing right turn to 3600 direct HIB VOR/DME and hold.</p>	
ASOS <b>126.425</b>	DULUTH APP CON <b>125.45 233.7</b>	CLNC DEL <b>127.4</b>	UNICOM <b>123.0 (CTAF) 0</b>



ELEV 1354	D	TDZE 1343
-----------	---	-----------

HIRL Rwy 13-31

FAF to MAP 6.9 NM

Knots	60	90	120	150	180
Min:Sec	6:54	4:36	3:27	2:46	2:18

2500	3600	HIB	
			One Minute Holding Pattern
		BOYAC HIB 5	HIB VOR/DME OM 3558
		HIB 6.9	1740*
			1740*
			3600
			GS 2.90° TCH 60
			1.9 NM
			5 NM
CATEGORY	A	B	C
S-ILS 31	1543-½ 200 (200-½)		
S-LOC 31	1740-½ 397 (400-½)		1740-¾ 397 (400-¾)
CIRCLING	1820-1 466 (500-1)	1840-1 486 (500-1)	1840-1½ 486 (500-1½) 1960-2 606 (700-2)
# BOYAC FIX MINIMUMS			
S-LOC 31	1680-½ 337 (400-½)		1680-¾ 337 (400-¾)
CIRCLING	1820-1 466 (500-1)	1840-1 486 (500-1)	1840-1½ 486 (500-1½) 1960-2 606 (700-2)

NC-1, 22 FEB 2024 to 21 MAR 2024

NC-1, 22 FEB 2024 to 21 MAR 2024

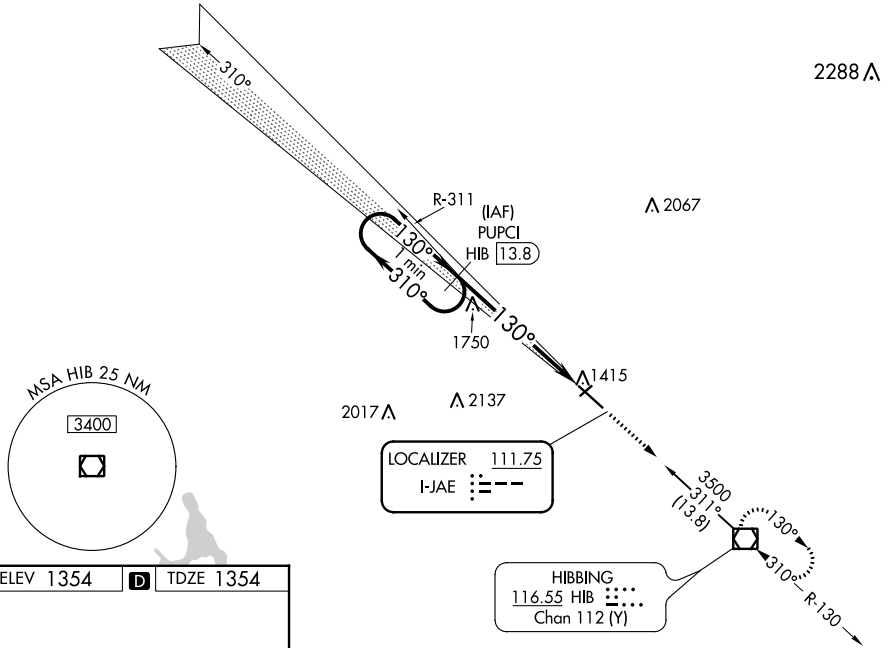
LOC I-JAE <b>111.75</b>	APP CRS <b>130°</b>	Rwy Idg TDZE Apt Elev	<b>6758</b> <b>1354</b> <b>1354</b>
----------------------------	------------------------	-----------------------------	---

# ILS or LOC/DME RWY 13

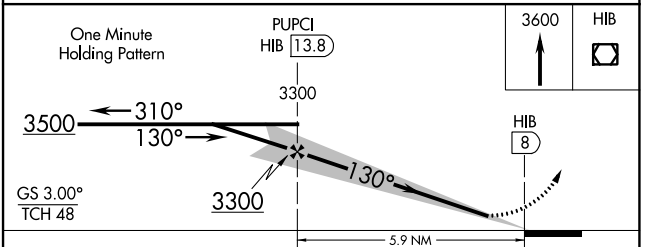
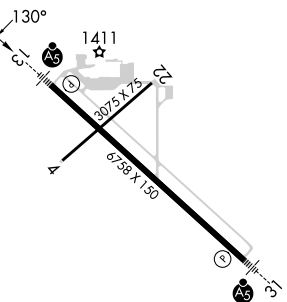
RANGE RGNL (HIB)

Autopilot couple approach NA below 2388.		MALSR 	MISSED APPROACH: Climb to 3600 direct HIB VOR/DME and hold.
ASOS <b>126.425</b>	DULUTH APP CON <b>125.45 233.7</b>	CLNC DEL <b>127.4</b>	UNICOM <b>123.0 (CTAF) 0</b>

## DME REQUIRED



ELEV 1354	<b>D</b>	TDZE 1354
-----------	----------	-----------



CATEGORY	A	B	C	D
S-ILS 13	1554-1/2 200 (200-1/2)			
S-LOC 13	2060-1/2	706 (800-1/2)	2060-1 1/2 706 (800-1 1/2)	2060-1 3/4 706 (800-1 3/4)
CIRCLING	2060-1	706 (800-1)	2060-1 1/2 706 (800-1 1/2)	2060-2 706 (800-2)

NC-1, 22 FEB 2024 to 21 MAR 2024

NC-1, 22 FEB 2024 to 21 MAR 2024


WAAS CH <b>69222</b> <b>W13A</b>	APP CRS <b>130°</b>	Rwy Idg TDZE Apt Elev	<b>6758</b> <b>1354</b> <b>1354</b>
--	------------------------	-----------------------------	---

# RNAV (GPS) RWY 13

RANGE RGNL (HIB)

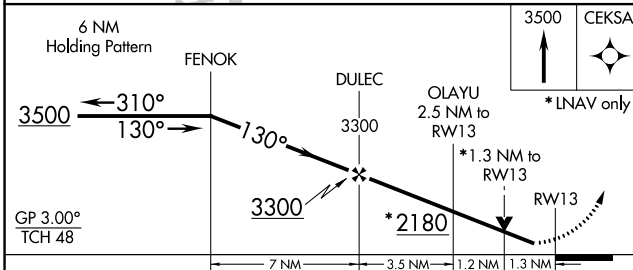
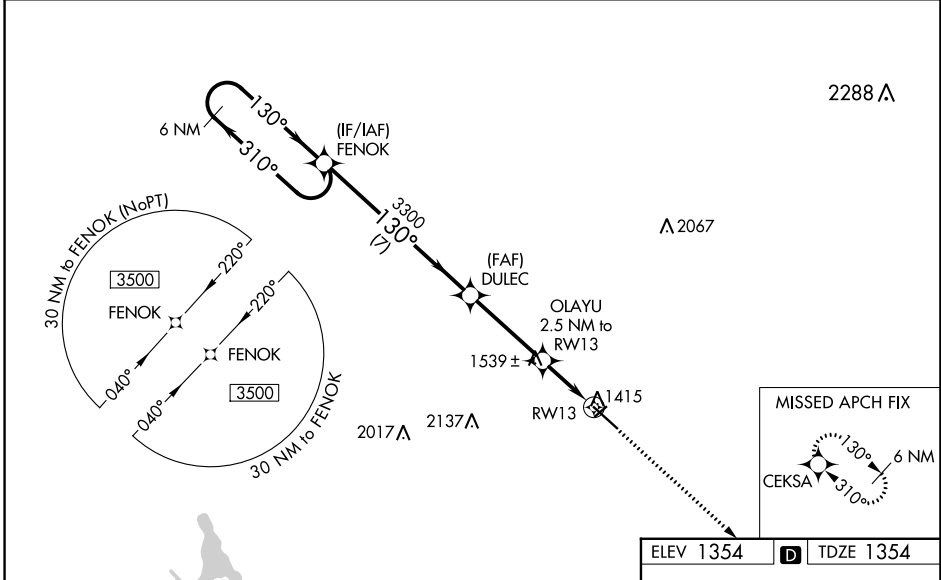
**⚠** Circling to Rwy 4 NA at night. DME/DME RNP-0.3 NA. VDP and Baro-VNAV NA when using Eveleth altimeter setting. For uncompensated Baro-VNAV systems, LNAV/VNAV NA below -17°C (2°F) or above 35°C (95°F). Helicopter visibility reduction below ¾ SM NA. When local altimeter setting not received, use Eveleth altimeter setting and increase all DA 36 feet, and all MDA 40 feet, and increase LNAV Cat C/D visibility to 1 mile. Inop table does not apply to LPV and LNAV/VNAV all Cats. For inop MALSRS, increase LNAV Cat A/B visibility to 1 mile. For inop MALSRS when using Eveleth altimeter setting, increase LPV and LNAV/VNAV all Cats visibility to ¾.

MALSRS



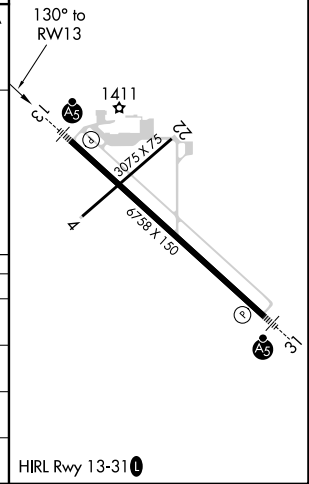
MISSED APPROACH: Climb to 3500 direct CEKSA and hold.

ASOS <b>126.425</b>	DULUTH APP CON <b>125.45 233.7</b>	CLNC DEL <b>127.4</b>	UNICOM <b>123.0 (CTAF) 0</b>
------------------------	---------------------------------------	--------------------------	---------------------------------



ELEV 1354	<b>D</b>	TDZE 1354
-----------	----------	-----------

CATEGORY	A	B	C	D
LPV DA		1604-¾	250 (300-¾)	
LNAV/VNAV DA		1614-¾	260 (300-¾)	
LNAV MDA	1800-¾	446 (500-¾)	1800-7/8	446 (500-7/8)
CIRCLING	1820-1 466 (500-1)	1840-1 486 (500-1)	1840-1½ 486 (500-1½)	1960-2 606 (700-2)



NC-1, 22 FEB 2024 to 21 MAR 2024

NC-1, 22 FEB 2024 to 21 MAR 2024

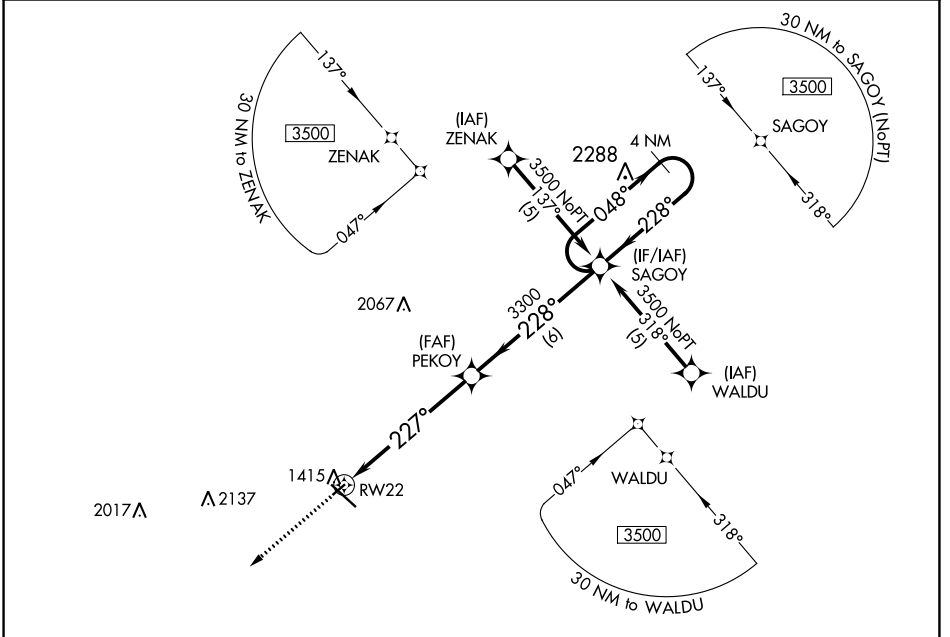
APP CRS <b>227°</b>	Rwy Idg TDZE Apt Elev	<b>3075</b> <b>1350</b> <b>1353</b>
------------------------	-----------------------------	---

# RNAV (GPS) RWY 22

RANGE RGNL (HIB)

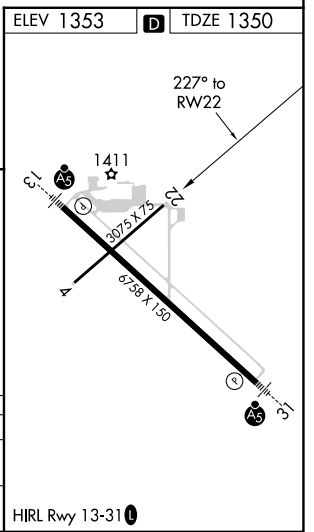
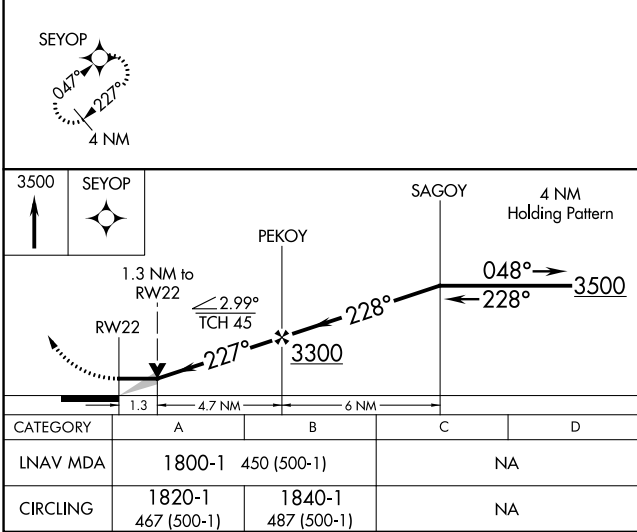
**NA** Procedure not authorized at night. GPS or RNP-0.3 required. DME/DME RNP-0.3 NA. MISSED APPROACH: Climb to 3500 direct SEYOP WP and hold.

ASOS <b>126.425</b>	DULUTH APP CON <b>125.45 233.7</b>	CLNC DEL <b>127.4</b>	UNICOM <b>123.0 (CTAF)</b>
------------------------	---------------------------------------	--------------------------	-------------------------------



NC-1, 22 FEB 2024 to 21 MAR 2024

NC-1, 22 FEB 2024 to 21 MAR 2024



WAAS CH <b>65722</b> <b>W31A</b>	APP CRS <b>310°</b>	Rwy Idg TDZE <b>1345</b> Apt Elev <b>1354</b>
--	------------------------	---

# RNAV (GPS) RWY 31

RANGE RGNL (HIB)

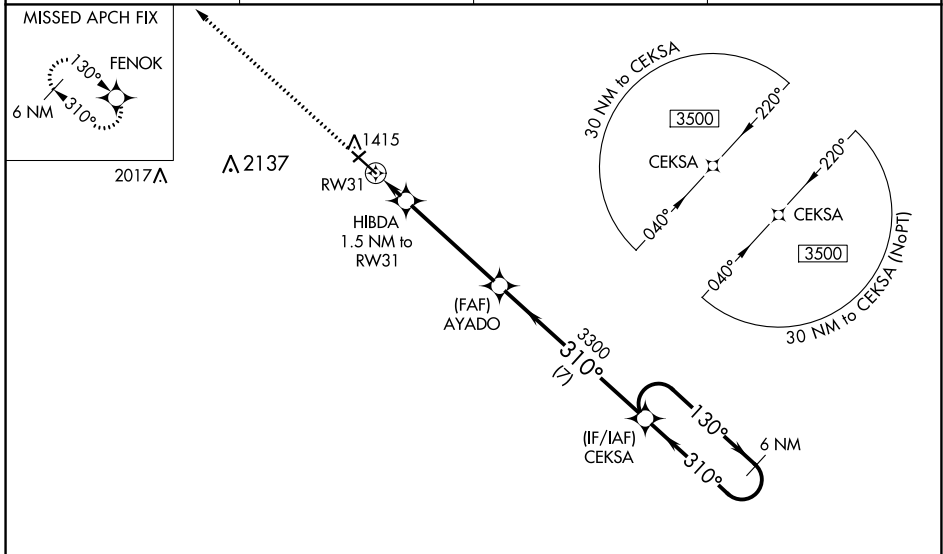
**⚠** Circling to Rwy 4 NA at night. For uncompensated Baro-VNAV systems, LNAV/VNAV NA below -17°C (2°F) or above 35°C (95°F). DME/DME RNP-0.3 NA. VDP and Baro-VNAV NA when using Eveleth altimeter setting. When local altimeter setting not received, use Eveleth altimeter setting and increase all DA 36 feet and all MDA 40 feet. For inop MALSRS increase LNAV/VNAV all Cats visibility to ¾ mile, LNAV Cat C/D to 1 mile. For inop MALSRS when using Eveleth altimeter setting, increase LNAV/VNAV all Cats visibility to ⅞ mile.

MALSRS



MISSED APPROACH: Climb to 3500 direct FENOK and hold.

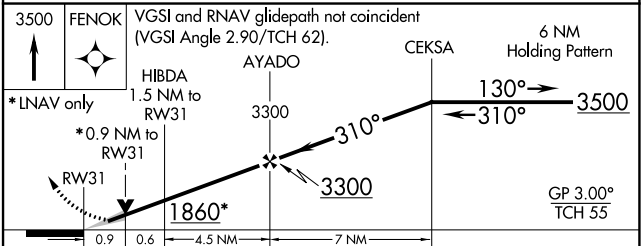
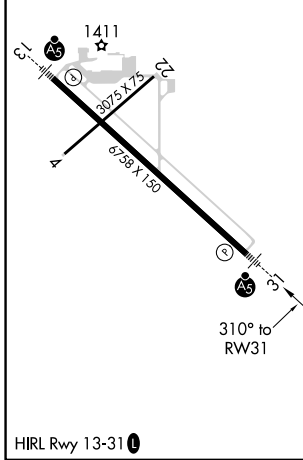
ASOS <b>126.425</b>	DULUTH APP CON <b>125.45 233.7</b>	CLNC DEL <b>127.4</b>	UNICOM <b>123.0 (CTAF) 0</b>
------------------------	---------------------------------------	--------------------------	---------------------------------



NC-1, 22 FEB 2024 to 21 MAR 2024

NC-1, 22 FEB 2024 to 21 MAR 2024

ELEV 1354	<b>D</b>	TDZE 1345
-----------	----------	-----------



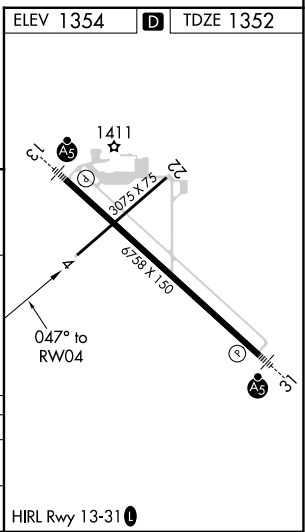
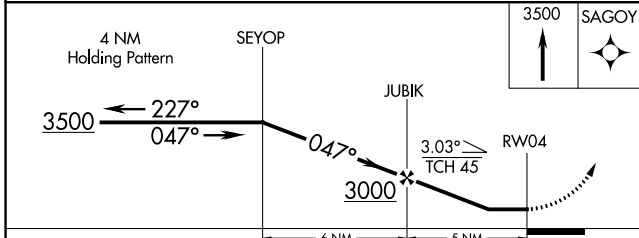
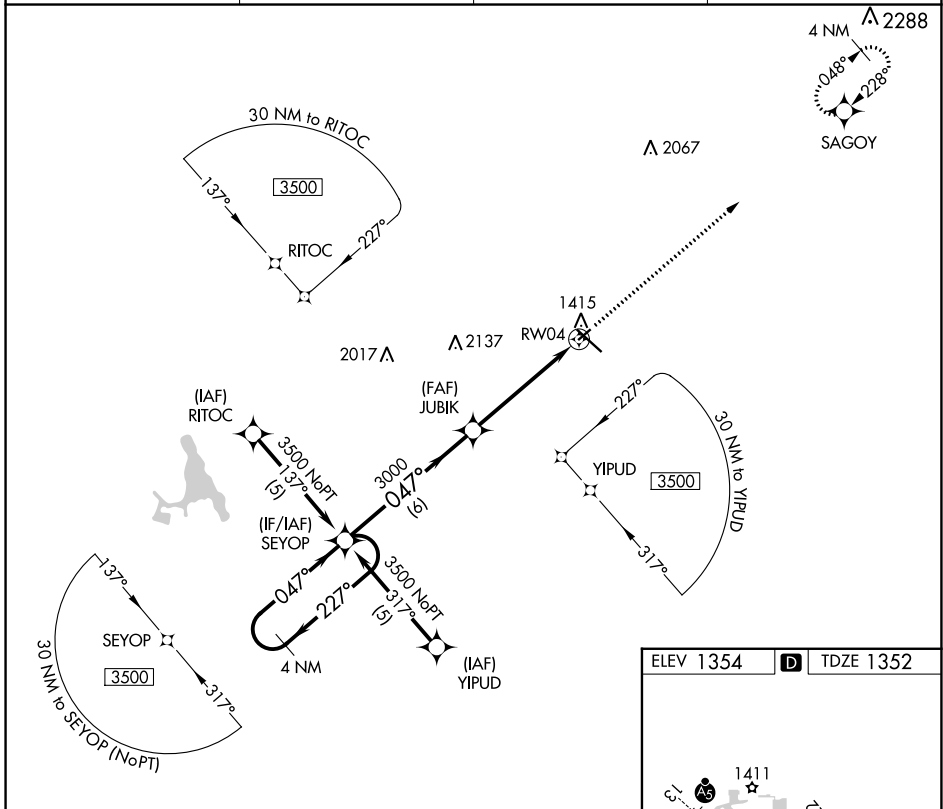
CATEGORY	A	B	C	D
LPV DA		1545-½	200 (200-½)	
LNAV/VNAV DA		1595-½	250 (300-½)	
LNAV MDA	1680-½	335 (400-½)	1680-⅝	335 (400-⅝)
CIRCLING	1820-1 466 (500-1)	1840-1 486 (500-1)	1840-1½ 486 (500-1½)	1960-2 606 (700-2)

APP CRS <b>047°</b>	Rwy Idg TDZE Apt Elev	<b>3075</b> <b>1352</b> <b>1354</b>
------------------------	-----------------------------	---

# RNAV (GPS) RWY 4

RANGE RGNL (HIB)

RNP APCH.		MISSED APPROACH: Climb to 3500 direct SAGOY WP and hold.	
Procedure not authorized at night. Rwy 4 helicopter visibility reduction below 3/4 SM NA.		ASOS <b>126.425</b>	DULUTH APP CON <b>125.45 233.7</b>
		CLNC DEL <b>127.4</b>	UNICOM <b>123.0 (CTAF) 0</b>



CATEGORY	A	B	C	D
LNAV MDA	1780-1	428 (500-1)	NA	
CIRCLING	1820-1 466 (500-1)	1840-1 486 (500-1)	NA	

NC-1, 22 FEB 2024 to 21 MAR 2024

NC-1, 22 FEB 2024 to 21 MAR 2024