

APP CRS	Rwy Idg	5003
098°	TDZE	806
	Apt Elev	806

RNAV (GPS) RWY 10

HUNTINGTON MUNI (HHG)

RNP APCH - GPS.

⚠ Rwy 10 helicopter visibility reduction below 3/4 SM NA.

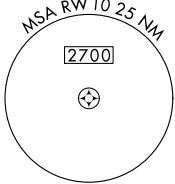
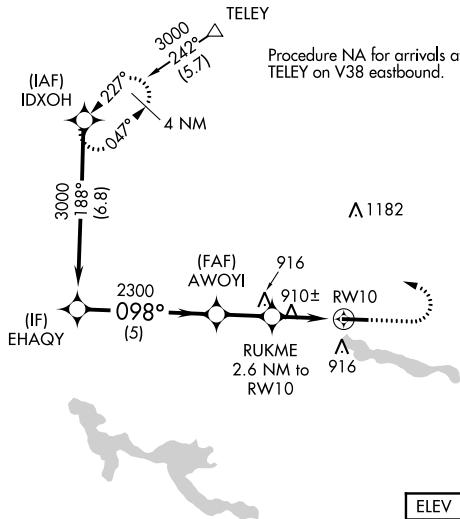
MISSED APPROACH: Climb to 1700 then climbing left turn to 2600 direct IDXOH and hold.

AWOS-3PT
126.575

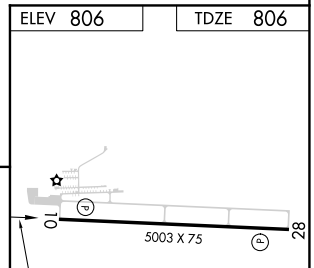
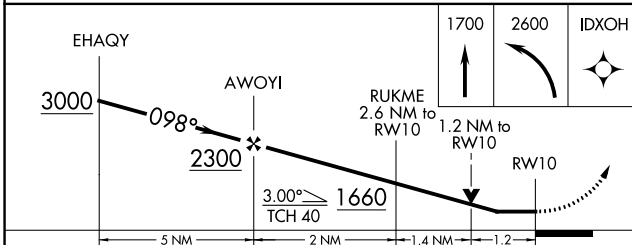
FORT WAYNE APP CON
127.2 284.6

UNICOM
122.8 (CTAF) 0

1648 **⚠**



ELEV 806	TDZE 806
----------	----------



CATEGORY	A	B	C	D
LNNAV MDA	1220-1 414 (500-1)		1220-1 1/8 414 (500-1 1/8)	
C CIRCLING	1300-1 494 (500-1)		1460-1 3/4 654 (700-1 3/4)	1540-2 1/4 734 (800-2 1/4)

MIRL Rwy 10-28 **0**
REIL Rws 10 and 28 **0**

APP CRS 278°	Rwy Idg TDZE Apt Elev	5003 806 806
------------------------	-----------------------------	---

RNAV (GPS) RWY 28

HUNTINGTON MUNI (HHG)

RNP APCH - GPS

⚠ Rwy 28 helicopter visibility reduction below 3/4 SM NA.

MISSED APPROACH: Climb to 1700 then climbing right turn to 2600 direct IDXOH and hold.

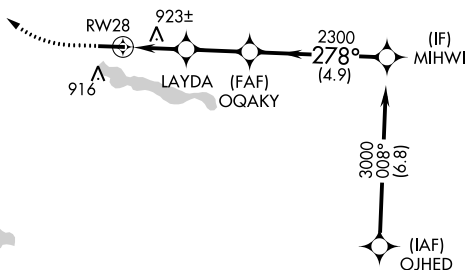
AWOS-3PT
126.575

FORT WAYNE APP CON
127.2 284.6

UNICOM
122.8 (CTAF) 0

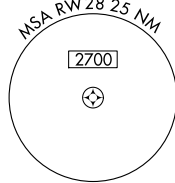


△ 1182

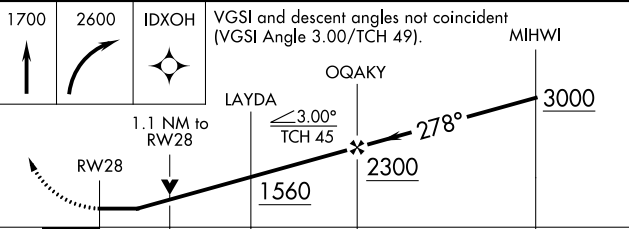
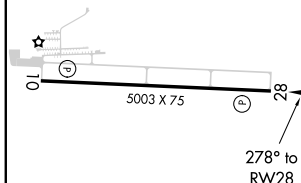


△ 1397

Procedure NA for arrivals at AJAYS on V221 southbound.



ELEV 806	TDZE 806
----------	----------



CATEGORY	A	B	C	D
LNAV MDA	1200-1	394 (400-1)	1200-1½	394 (400-1½)
C CIRCLING	1300-1	494 (500-1)	1460-1¾ 654 (700-1¾)	1540-2¼ 734 (800-2¼)

MIRL Rwy 10-28 **0**
REIL Rwy 10 and 28 **0**

EC-2, 11 AUG 2022 to 08 SEP 2022

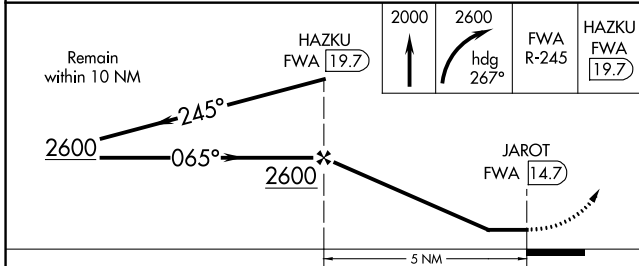
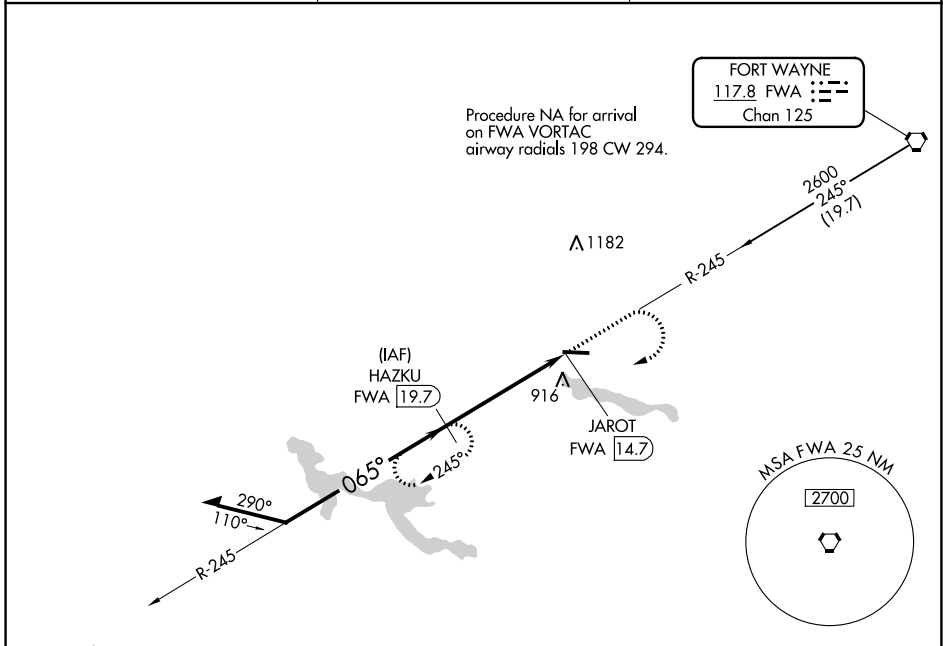
EC-2, 11 AUG 2022 to 08 SEP 2022

VORTAC FWA 117.8 Chan 125	APP CRS 065°	Rwy Idg TDZE Apt Elev	N/A N/A 806
---	------------------------	-----------------------------	--

VOR-A
HUNTINGTON MUNI (HHG)

DME required.	MISSED APPROACH: Climb to 2000 then climbing right turn to 2600 on heading 267° and on FWA VORTAC R-245 to HAZKU/19.7 DME and hold.
---------------	---

AWOS-3PT 126.575	FORT WAYNE APP CON 127.2 284.6	UNICOM 122.8 (CTAF) 0
----------------------------	--	---------------------------------



CATEGORY	A	B	C	D
C CIRCLING	1300-1	494 (500-1)	1460-1¾ 654 (700-1¾)	1540-2¼ 734 (800-2¼)

MIRL Rwy 10-28 0

REIL Rwy 10 and 28 0

EC-2, 11 AUG 2022 to 08 SEP 2022

EC-2, 11 AUG 2022 to 08 SEP 2022