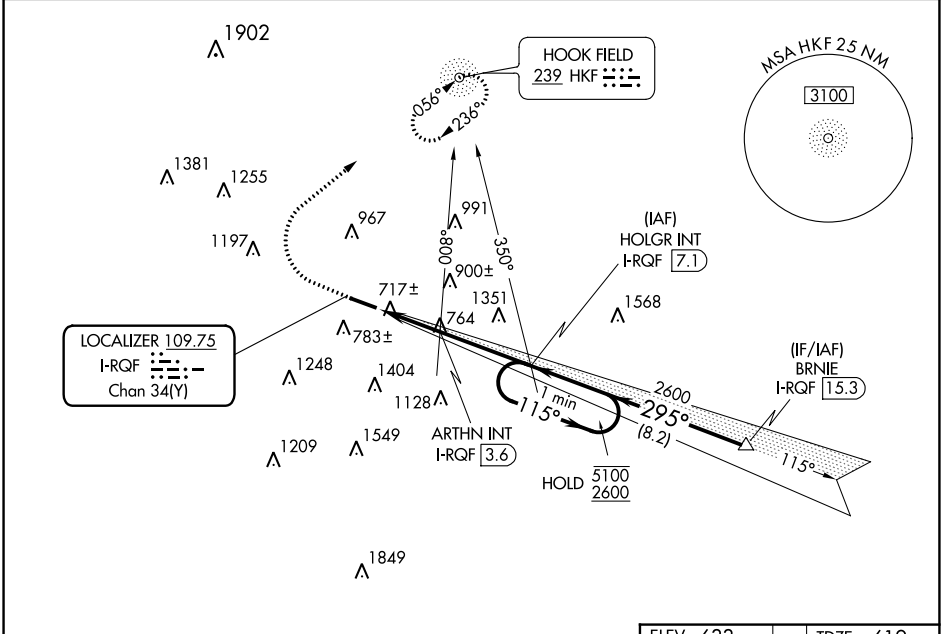


LOC/DME I-RQF <b>109.75</b> Chan <b>34 (Y)</b>	APP CRS <b>295°</b>	Rwy Idg TDZE Apt Elev <b>5500</b> <b>619</b> <b>633</b>
--	------------------------	--

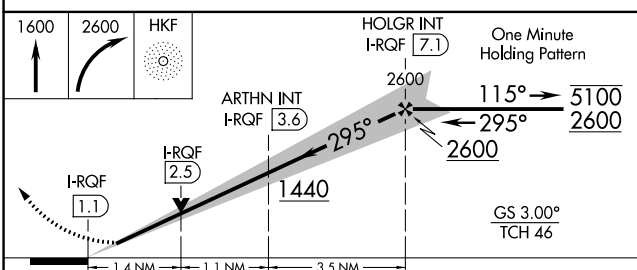
**ILS or LOC RWY 29**  
BUTLER COUNTY RGNL/HOGAN FLD (H.A.O)

ADF required. DME required for LOC only.		MALS	MISSED APPROACH: Climb to 1600 then climbing right turn to 2600 direct HKF NDB and hold.
<p>▼ Inop table does not apply to S-ILS 29. For inop ALS, increase S-LOC-29 Cats C and D visibility to 2½ SM; ARTHN fix minimums: for inop ALS, increase S-LOC 29 Cats C and D visibility to 1¾ SM.</p> <p>▲</p>		☉	
ASOS <b>121.425</b>	CINCINNATI APP CON <b>121.0 254.25</b>	CLNC DEL <b>126.25</b>	UNICOM <b>123.05 (CTAF) 0</b>



EC-2, 05 OCT 2023 to 02 NOV 2023

EC-2, 05 OCT 2023 to 02 NOV 2023



ELEV 633	TDZE 619
MIRL Rwy 11-29 0 REIL Rwy 11 and 29 0	
FAF to MAP 6 NM	
Knots	60 90 120 150 180
Min:Sec	6:00 4:00 3:00 2:24 2:00

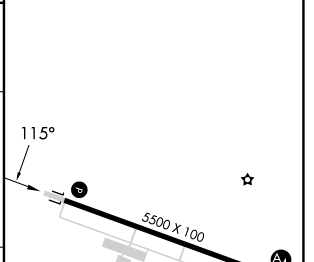
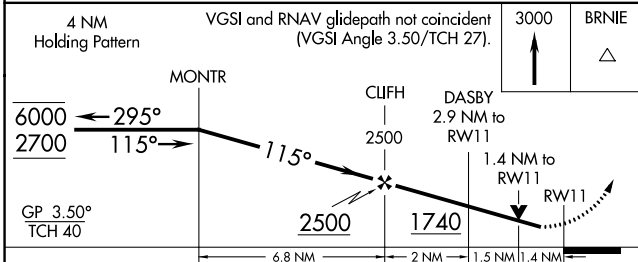
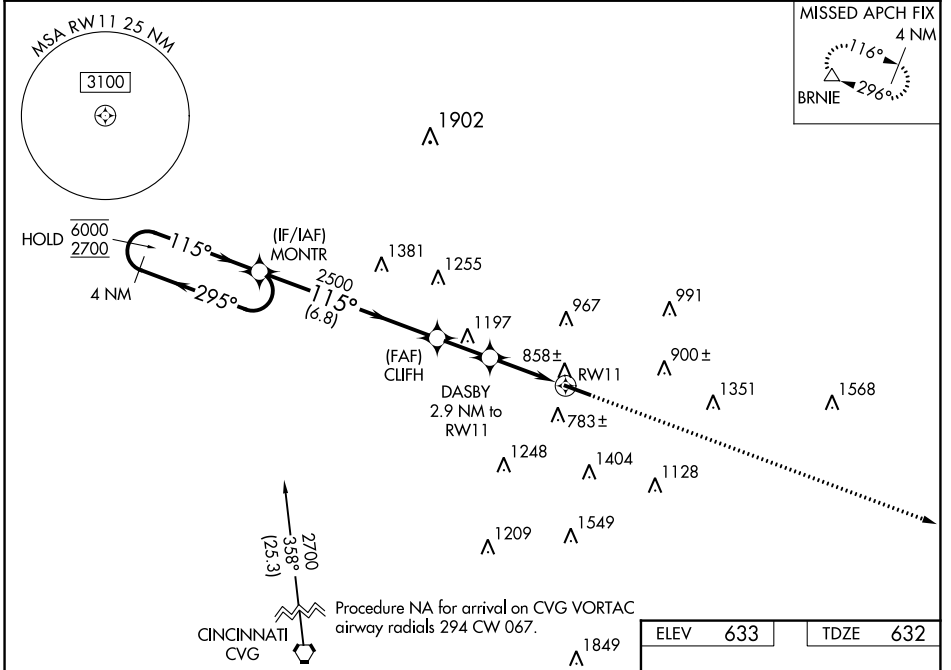
CATEGORY	A	B	C	D
S-ILS 29	819-¾		200 (200-¾)	
S-LOC 29	1440-¾ 821 (900-¾)	1440-1 821 (900-1)	1440-2	821 (900-2)
CIRCLING	1440-1 807 (900-1)	1440-1¼ 807 (900-1¼)	1440-2½ 807 (900-2½)	1760-3 1127 (1200-3)
ARTHN FIX MINIMUMS				
S-LOC 29	1120-¾	501 (500-¾)	1120-1¼	501 (500-1¼)
CIRCLING	1180-1 547 (600-1)	1260-1 627 (700-1)	1320-2 687 (700-2)	1760-3 1127 (1200-3)

WAAS CH <b>56600</b> <b>W11A</b>	APP CRS <b>115°</b>	Rwy Idg TDZE Apt Elev	<b>5500</b> <b>632</b> <b>633</b>
--	------------------------	-----------------------------	---

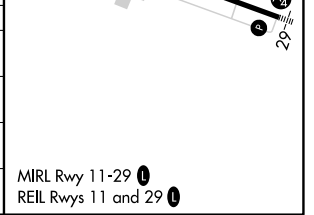
# RNAV (GPS) RWY 11

BUTLER COUNTY RGNL/HOGAN FLD (HAO)

RNP APCH - GPS.			MISSED APPROACH: Climb to 3000 direct BRNIE and hold.
ASOS <b>121.425</b>	CINCINNATI APP CON <b>121.0 254.25</b>	CLNC DEL <b>126.25</b>	UNICOM <b>123.05 (CTAF)</b>



CATEGORY	A	B	C	D
LPV DA		1020-1½	388 (400-1½)	
LNAV/VNAV DA		1108-1½	476 (500-1½)	
LNAV MDA	1160-1	528 (600-1)	1160-1½	528 (600-1½)
CIRCLING	1180-1 547 (600-1)	1260-1 627 (700-1)	1320-2 687 (700-2)	1760-3 1127 (1200-3)



EC-2, 05 OCT 2023 to 02 NOV 2023

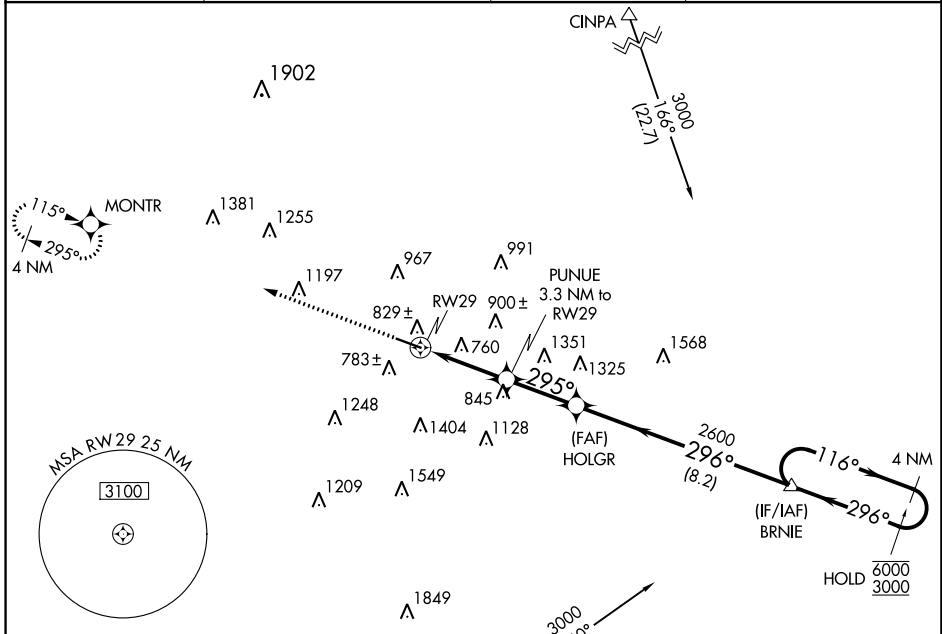
EC-2, 05 OCT 2023 to 02 NOV 2023

WAAS CH <b>61300</b> <b>W29A</b>	APP CRS <b>295°</b>	Rwy Idg TDZE Apt Elev	<b>5500</b> <b>619</b> <b>633</b>
--	------------------------	-----------------------------	---

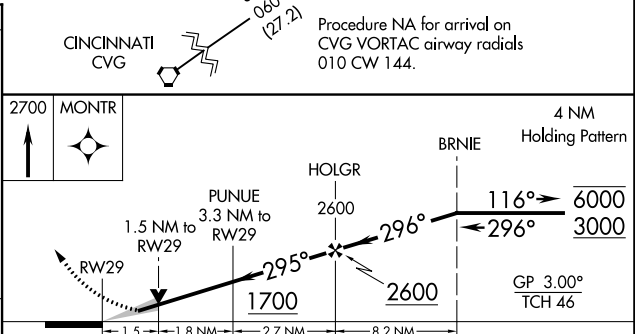
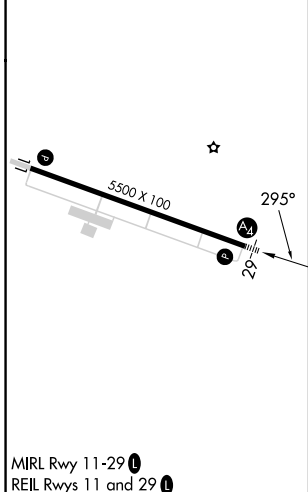
**RNAV (GPS) RWY 29**  
BUTLER COUNTY RGNL/HOGAN FLD (HAO)

RNP APCH - GPS.		MALS	MISSED APPROACH: Climb to 2700 direct MONTR and hold.
<p><b>⚠</b> For uncompensated Baro-VNAV systems, LNAV/VNAV NA below -18°C or above 54°C. For inop ALS, increase LNAV/VNAV visibilities to 1 ½ SM.</p>		<b>Ⓜ</b>	

ASOS <b>121.425</b>	CINCINNATI APP CON <b>121.0 254.25</b>	CLNC DEL <b>126.25</b>	UNICOM <b>123.05 (CTAF) ①</b>
------------------------	---	---------------------------	----------------------------------



ELEV <b>633</b>	TDZE <b>619</b>
-----------------	-----------------



CATEGORY	A	B	C	D
LPV DA		944-¾	325 (400-¾)	
LNAV/VNAV DA		1128-1¼	509 (500-1¼)	
LNAV MDA	1140-¾	521 (600-¾)	1140-1¼	521 (600-1¼)
<b>C</b> CIRCLING	1180-1 547 (600-1)	1260-1 627 (700-1)	1320-2 687 (700-2)	1760-3 1127 (1200-3)

EC-2, 05 OCT 2023 to 02 NOV 2023

EC-2, 05 OCT 2023 to 02 NOV 2023