

LOC I-GRF <b>108.3</b> Chan <b>20</b>	APCH CRS <b>151°</b> Appt Elev <b>301</b>	Run/Ideg <b>300</b> <b>300</b> Appt Elev <b>301</b>
---	---	--

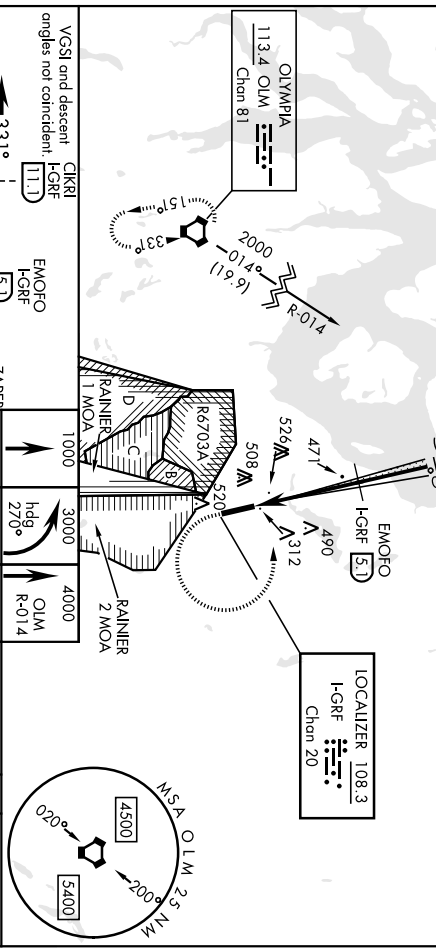
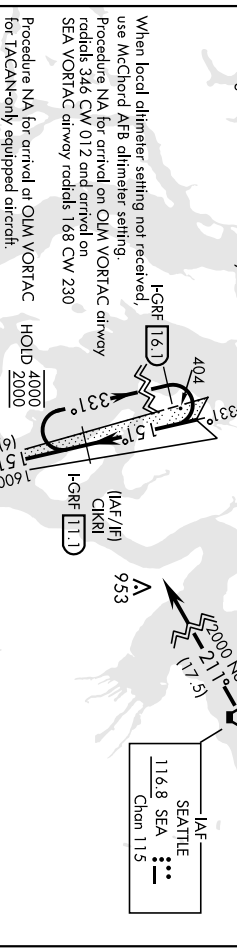
AL-413 (USA) GRAY AAF (JOINT BASE LEWIS MCCORD) (KGRF)

RNAVI - GPS from SEA VORTAC.	SEATTLE APP CON <b>120.1 290.9</b>	TOWER* <b>119.325 (CTAF) 256.8</b>	GND CON <b>121.9 290.2</b>	CINC DEL <b>121.9 290.2</b>	PAR
------------------------------	---------------------------------------	---------------------------------------	-------------------------------	--------------------------------	-----

SSAR <b>A3</b>	MISSED APPROACH: Climb to 1000, then climbing left turn to 3000 on hdg 270° and OLM VORTAC R-014, then continue climb to 4000 on OLM R-014 to OLM and hold.
-------------------	---

ATIS  
**124.65 306.2**

When local altimeter setting not received, use McChord AFB altimeter setting.  
Procedure NA for arrival on OLM VORTAC drwy radials 346 CW 012 and arrival on SEA VORTAC airway radials 168 CW 230  
Procedure NA for arrival at OLM VORTAC for TACAN-only equipped aircraft.



VSST and descent angles not coincident	CIKRI LGRF (111)	EMOFO HGRF (51)	ZAPER LGRF (33)	HGRF (12)
4000 2000	←331° ←151°	157° 1600	1020	1600
GS 3.00° TCH 55		1.8 NM	2.1 NM	
CATEGORY	A	B	C	D
S-ILS 15	500/24	200	(200+½)	
S-LOC 15	640/24 340 (400-½)	640/26 340 (400-½)		
DIRCLING**	840-1 539 (600-1)	840-1½ 539 (600-1½)	920-2 619 (700-2)	
S-ILS 15	516/24	216	(300-½)	
S-LOC 15*	660/24 360 (400-½)	660/35 360 (400-¾)		
DIRCLING**	860-1 559 (600-1)	860-1½ 559 (600-1½)	940-2 639 (700-2)	

ELEV	301	TDZE	300				
1.51° 4 NM from FAF							
MSA OLM 2.5 NM							
<table border="1"> <tr> <td>4300</td> <td>4500</td> </tr> <tr> <td>5000</td> <td>5200</td> </tr> </table>				4300	4500	5000	5200
4300	4500						
5000	5200						
HRL Rwy 15-33							
FAF to MAP 4.0 NM							
Knots	60	90	120 150 180				
Min:Sec	4:00	2:40	2:00 1:36 1:20				

FORT LEWIS, WASHINGTON 47°05'N-122°35'W GRAY AAF (JOINT BASE LEWIS MCCORD) (KGRF) Amdt 8A 05DEC19

ILS or LOC RWY 15

FORT LEWIS, WASHINGTON

# RNAV (GPS) RWY 15

APCH CRS	Rwy Idg	6124
151°	TDZE	300
	Arprt Elev	301

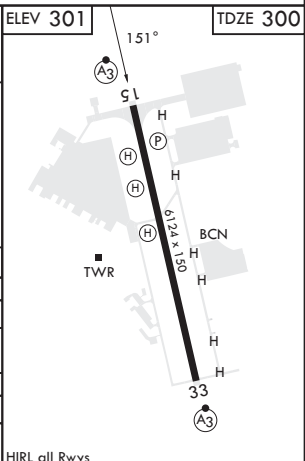
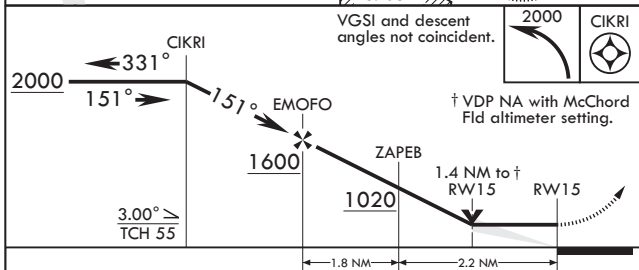
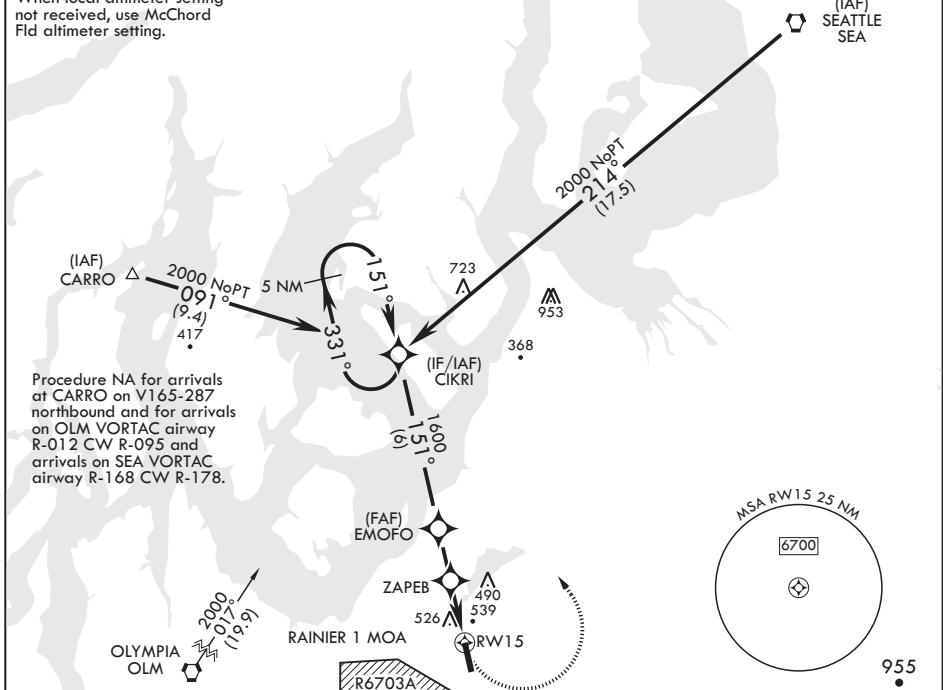
AL-413 (USA)

GRAY AAF (JOINT BASE LEWIS MCCHORD) (KGRF)

RNP APCH	SSALR	MISSED APPROACH: Climbing left turn to 2000 direct CIKRI and hold.
▼ *Circling not authorized W of Rwy 15-33.		

ATIS	SEATTLE APP CON/DEP CON	TOWER *	GND CON	CLNC DEL	PAR
124.65 306.2	120.1 290.9	119.325 (CTAF) 256.8	121.9 290.2	121.9 290.2	

When local altimeter setting not received, use McChord Fld altimeter setting.



CATEGORY	A	B	C	D
LNAV MDA	800/24	500 (500-½)	800/50	500 (500-1)
CIRCLING*	840-1	539 (600-1)	840-1½ 539 (600-1½)	920-2 619 (700-2)
MC CHORD FLD ALTIMETER SETTING MINIMUMS				
LNAV MDA	820/24		520 (600-½)	
CIRCLING*	860-1	559 (600-1)	860-1½ 559 (600-1½)	940-2 639 (700-2)

FORT LEWIS, WASHINGTON

47°05'N - 122°35'W GRAY AAF (JOINT BASE LEWIS MCCHORD) (KGRF)

Amdt 3 10AUG23

# RNAV (GPS) RWY 15

NW-1, 22 FEB 2024 to 21 MAR 2024

NW-1, 22 FEB 2024 to 21 MAR 2024

FORT LEWIS, WASHINGTON

# RNAV (GPS) RWY 33

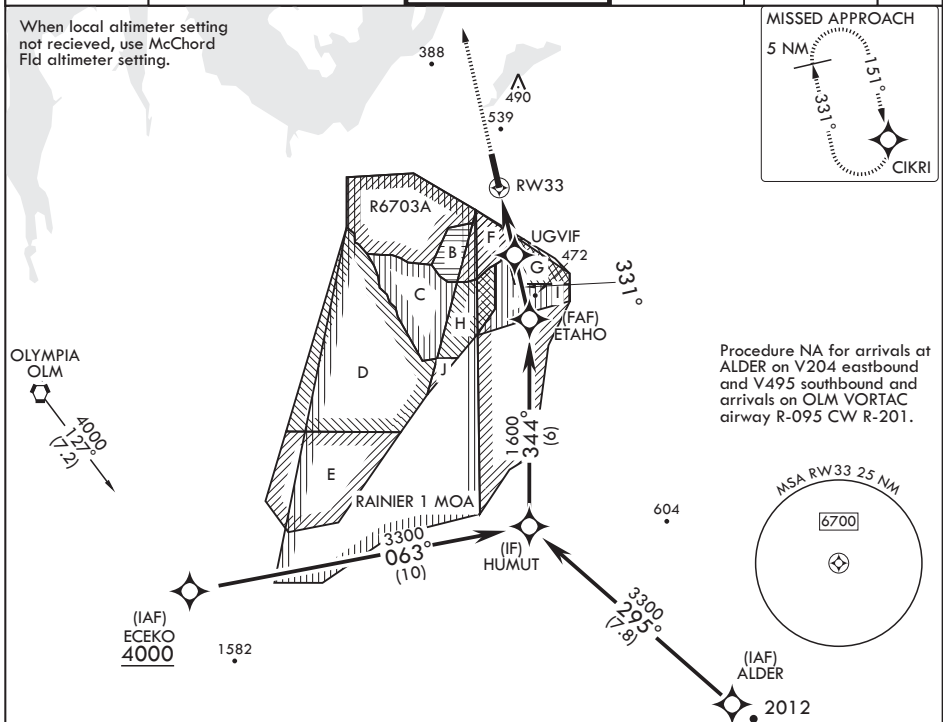
AL-413 (USA)

GRAY AAF (JOINT BASE LEWIS MCCHORD) (KGRF)

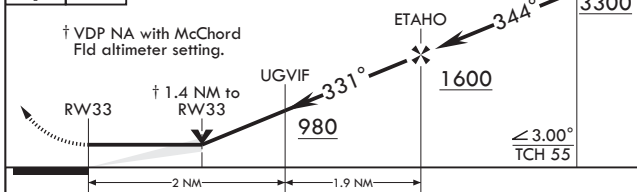
APCH CRS	Rwy Idg	6124
331°	TDZE	301
	Arprt Elev	301

RNP APCH	SSALR	MISSED APPROACH: Climb to 2000 direct CIKRI and hold.

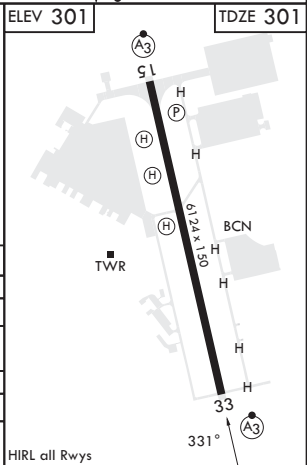
ATIS	SEATTLE APP CON/DEP CON	TOWER *	GND CON	CLNC DEL	PAR
124.65 306.2	120.1 290.9	119.325 (CTAF) 256.8	121.9 290.2	121.9 290.2	



2000	CIKRI	HUMUT



CATEGORY	A	B	C	D
LNAV MDA	800-½ 499	(500-½)	800-1 499	(500-1)
CIRCLING*	840-1 539	(600-1)	840-1½ 539	920-2 619 (700-2)
MC CHORD FLD ALTIMETER SETTING MINIMUMS				
LNAV MDA	820-½ 519	(600-½)	820-1 519	(600-1)
CIRCLING*	860-1 559	(600-1)	860-1½ 559	940-2 639 (700-2)



FORT LEWIS, WASHINGTON

47°05'N - 122°35'W GRAY AAF (JOINT BASE LEWIS MCCHORD) (KGRF)

Amdt 3 10AUG23

# RNAV (GPS) RWY 33

NW-1, 22 FEB 2024 to 21 MAR 2024

NW-1, 22 FEB 2024 to 21 MAR 2024