

WAAS CH 69638 W18A	APP CRS 182°	Rwy Idg 4002 TDZE 541 Apt Elev 541
--	------------------------	---

RNAV (GPS) RWY 18

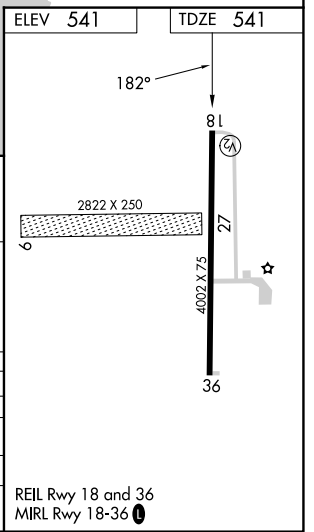
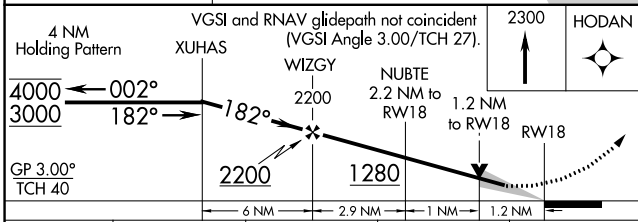
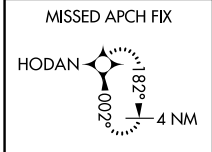
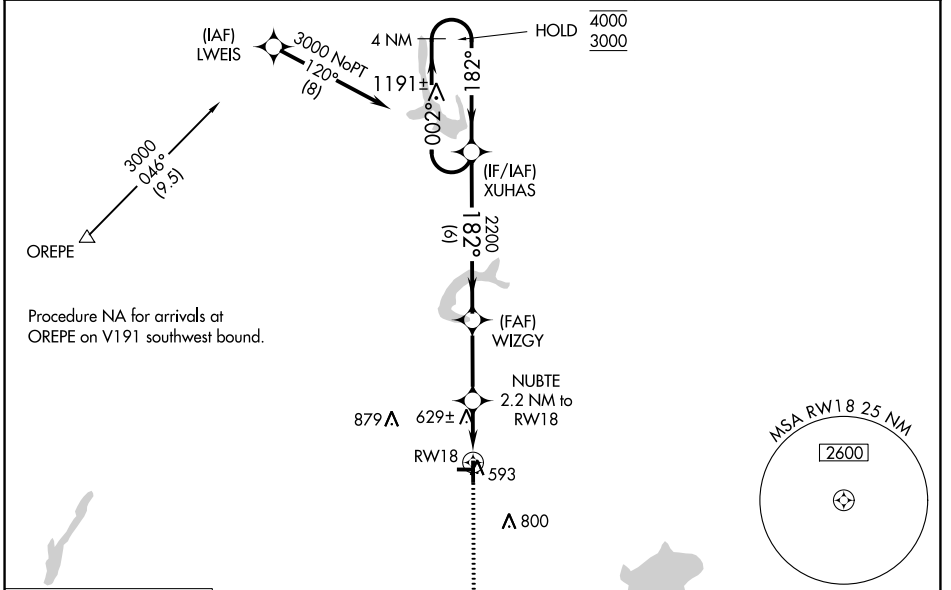
GREENVILLE (G.R.E.)

RNP APCH - GPS.

NA Circling NA to Rwy 9 and 27. Baro-VNAV and VDP NA when using Salem altimeter setting. For uncompensated Baro-VNAV systems, LNAV/VNAV NA below -16°C or above 54°C. Procedure NA at night. When local altimeter setting not received, use Salem altimeter setting and increase LPV DA to 905 feet; increase LNAV/VNAV DA to 905 feet; increase all MDAs 60 feet and LNAV visibility Cat C/D ¼ SM, and Circling visibility Cat D ¼ SM.

MISSED APPROACH: Climb to 2300 direct HODAN and hold.

AWOS-AV 123.05	KANSAS CITY CENTER 127.7 351.825	UNICOM 123.05 (CTAF) 0
--------------------------	--	----------------------------------



CATEGORY	A	B	C	D
LPV DA		848-1	307 (400-1)	
LNAV/VNAV DA		848-1	307 (400-1)	
LNAV MDA	940-1 399 (400-1)		940-1 399 (400-1 1/8)	
CIRCLING	980-1 439 (500-1)	1000-1 459 (500-1)	1220-2 679 (700-2)	1240-2 699 (700-2 1/4)

EC-3, 22 FEB 2024 to 21 MAR 2024

EC-3, 22 FEB 2024 to 21 MAR 2024

WAAS CH 73038 W36A	APP CRS 002°	Rwy Idg TDZE 540 Apt Elev 541	4002
--	------------------------	---	-------------

RNAV (GPS) RWY 36

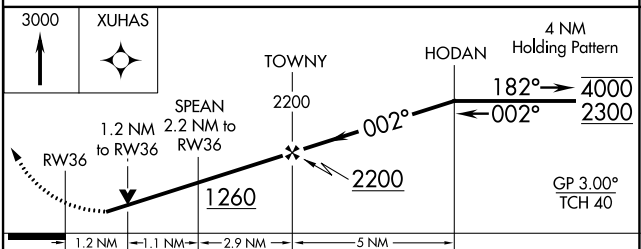
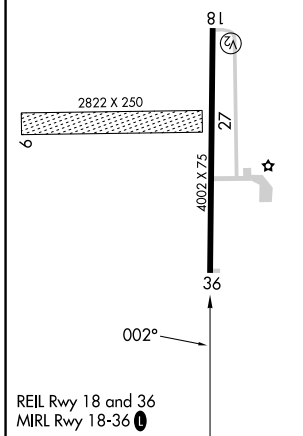
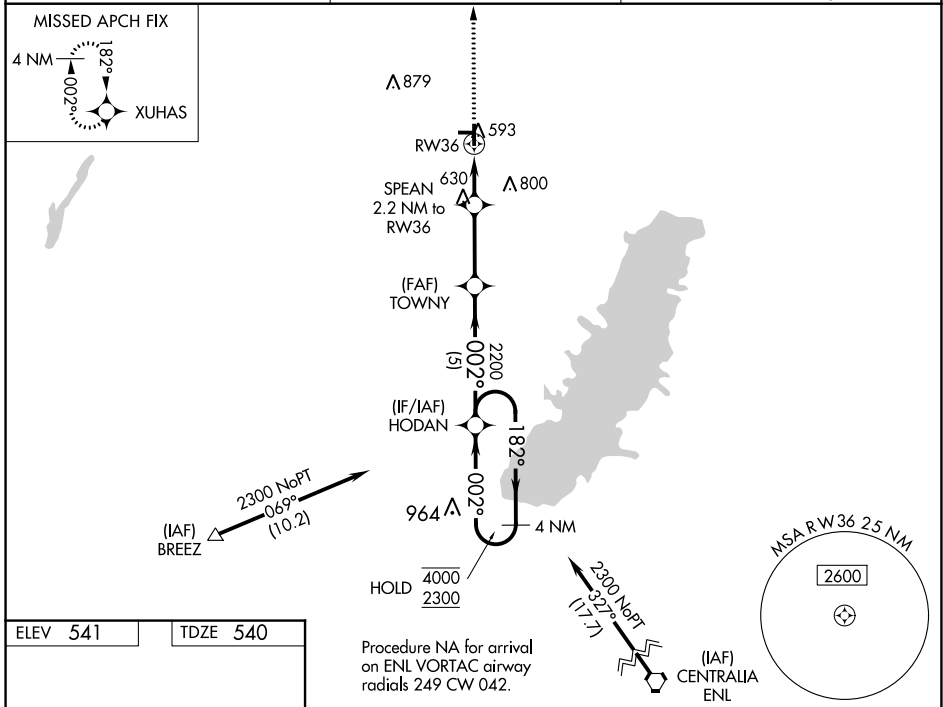
GREENVILLE (GR.E)

RNP APCH - GPS.

NA Rwy 36 helicopter visibility reduction below 3/4 SM NA. Circling NA to Rwy 9 and 27. Procedure NA at night. For uncompensated Baro-VNAV systems, LNAV/VNAV NA below -16°C or above 54°C. When local altimeter setting not received, use Salem altimeter setting and increase LPV DA to 910 feet; increase LNAV/VNAV DA to 904 feet; increase all MDAs 60 feet and LNAV visibility Cat C/D 1/4 SM, and Circling visibility Cat D 1/4 SM. Baro-VNAV and VDP NA when using Salem altimeter setting.

MISSED APPROACH:
Climb to 3000 direct XUHAS and hold.

AWOS-AV 123.05	KANSAS CITY CENTER 127.7 351.825	UNICOM 123.05 (CTAF) 0
--------------------------	--	----------------------------------



CATEGORY	A	B	C	D
LPV DA		853-1	313 (400-1)	
LNAV/VNAV DA		847-1	307 (400-1)	
LNAV MDA	940-1	400 (400-1)	940-1 1/8	400 (400-1 1/8)
CIRCLING	980-1 439 (500-1)	1000-1 459 (500-1)	1220-2 679 (700-2)	1240-2 1/4 699 (700-2 1/4)