

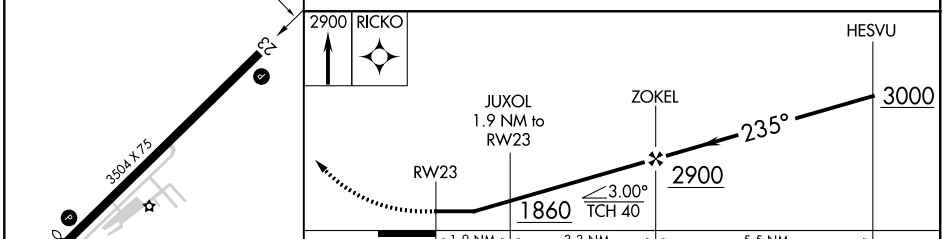
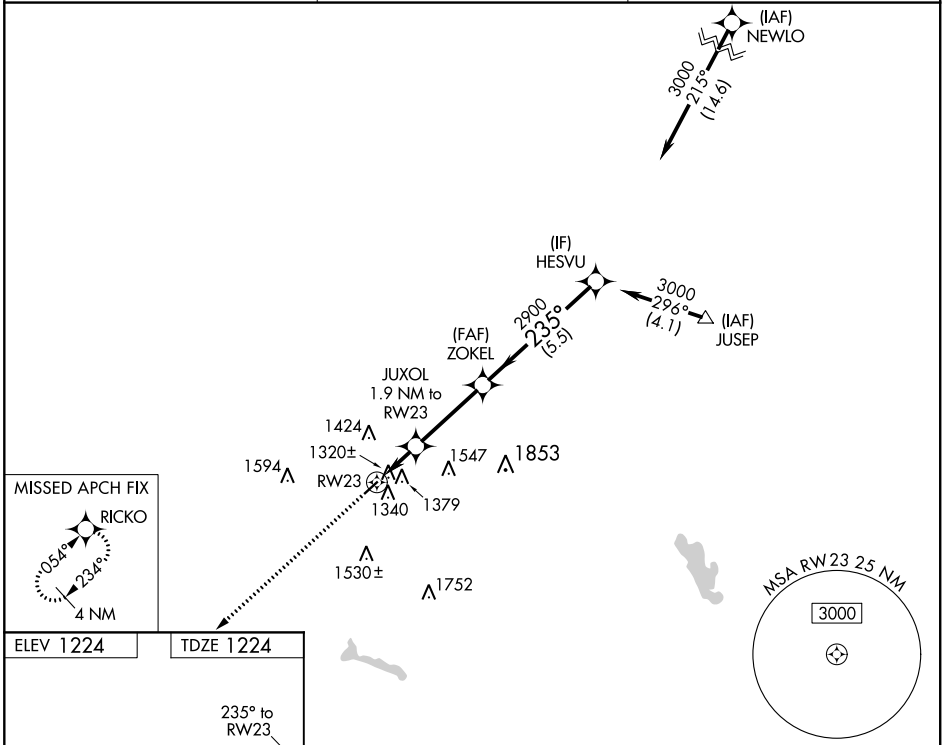
WAAS CH <b>57923</b> <b>W23A</b>	APP CRS <b>235°</b>	Rwy Idg TDZE Apt Elev	<b>3504</b> <b>1224</b> <b>1224</b>
--	------------------------	-----------------------------	---

# RNAV (GPS) RWY 23

GALLION MUNI (GQQ)

<p><b>NA</b> Helicopter visibility reduction below <math>\frac{3}{4}</math> SM NA. DME/DME RNP-0.3 NA. Use Mansfield altimeter setting. Circling Rwy 5 NA at night.</p>	<p>MISSED APPROACH: Climb to 2900 direct RICKO and hold.</p>
---	--

<p>CLEVELAND APP CON ★ <b>124.2 360.65</b></p>	<p>CLNC DEL <b>126.8</b></p>	<p>UNICOM <b>122.8 (CTAF) 1</b></p>
--	----------------------------------	---



CATEGORY	A	B	C	D
LP MDA	1620-1	396 (400-1)	1620-1 $\frac{1}{8}$ 396 (400-1 $\frac{1}{8}$ )	NA
LNAV MDA	1760-1	536 (600-1)	1760-1 $\frac{1}{8}$ 536 (600-1 $\frac{1}{8}$ )	NA
CIRCLING	1800-1 576 (600-1)	1960-1 736 (800-1)	1960-2 736 (800-2)	NA

GALLION, OHIO  
Orig-C 15JUL21

40°45'N-82°43'W

# RNAV (GPS) RWY 23

EC-2, 30 DEC 2021 to 27 JAN 2022

EC-2, 30 DEC 2021 to 27 JAN 2022

WAAS CH <b>69223</b> <b>W05A</b>	APP CRS <b>054°</b>	Rwy Idg TDZE Apt Elev	<b>3318</b> <b>1224</b> <b>1224</b>
--	------------------------	-----------------------------	---

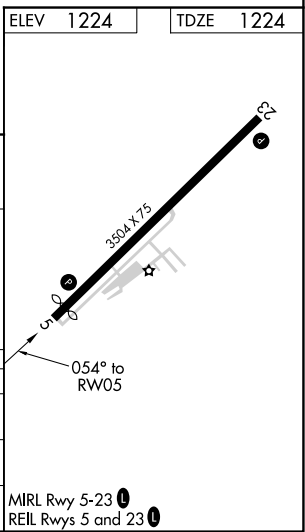
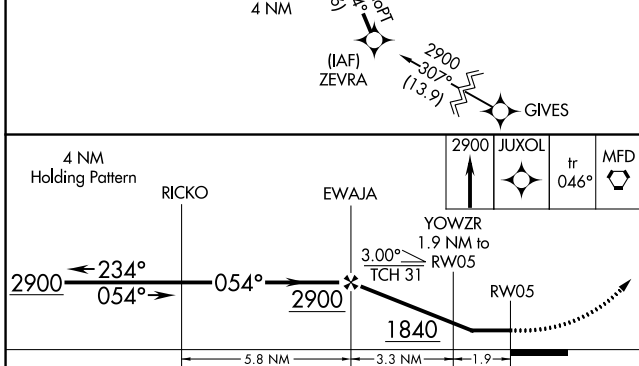
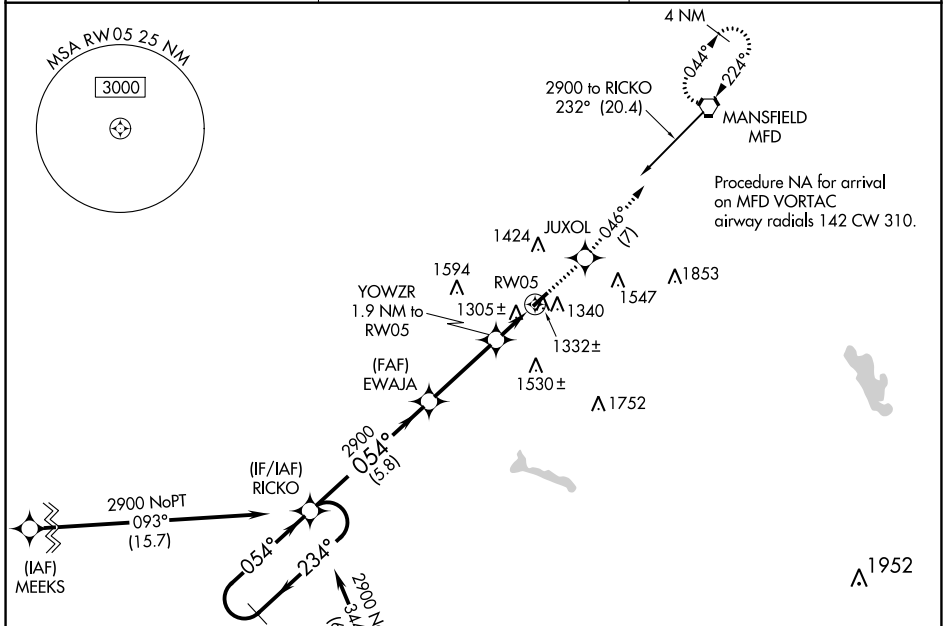
# RNAV (GPS) RWY 5

GALLION MUNI (GQQ)

**NA** Helicopter visibility reduction below 1 SM NA.  
DME/DME RNP-0.3 NA. Use Mansfield altimeter setting.  
Straight-in Rwy 5 NA at night, Circling Rwy 5 NA at night.

MISSED APPROACH: Climb to 2900 direct JUXOL and on track 046° to MFD VORTAC and hold.

CLEVELAND APP CON ★ <b>124.2 360.65</b>	CLNC DEL <b>126.8</b>	UNICOM <b>122.8 (CTAF) 1</b>
--	--------------------------	---------------------------------



CATEGORY	A	B	C	D
LP MDA	1600-1 376 (400-1)			NA
LNVA MDA	1620-1	396 (400-1)	1620-1½ 396 (400-1½)	NA
CIRCLING	1800-1 576 (600-1)	1960-1 736 (800-1)	1960-2 736 (800-2)	NA

EC-2, 30 DEC 2021 to 27 JAN 2022

EC-2, 30 DEC 2021 to 27 JAN 2022

VORTAC MFD <b>108.8</b> Chan <b>25</b>	APP CRS <b>224°</b>	Rwy Idg TDZE Apt Elev <b>3504</b> <b>1224</b> <b>1224</b>
--	------------------------	--

# VOR RWY 23

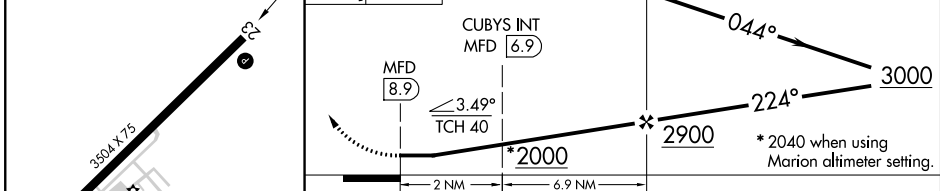
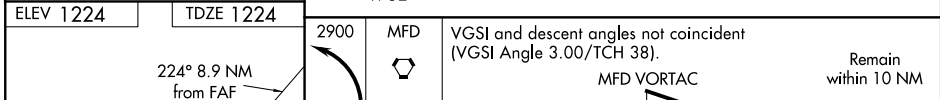
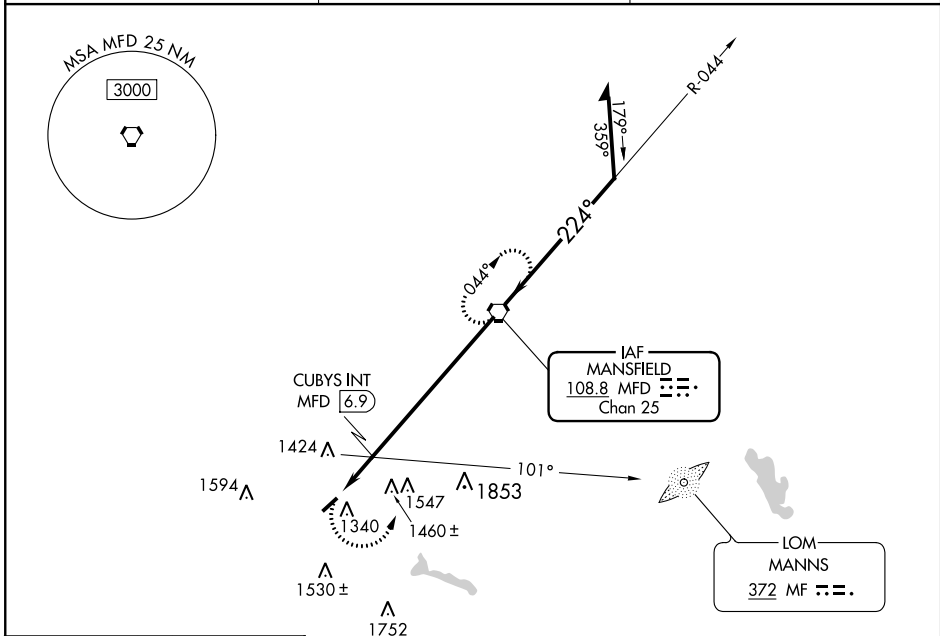
GALLION MUNI (GQQ)

RADAR required for procedure entry.

Procedure NA at night. Use Mansfield altimeter setting; when not received, use Marion altimeter setting and increase all MDAs 40 feet, increase CUBYS fix minimums S-23 all Cats visibility 1/8 SM and Circling Cat C 1/4 SM. Rwy 23 helicopter visibility reduction below 1 SM NA.

MISSED APPROACH: Climbing left turn to 2900 direct MFD VORTAC and hold.

CLEVELAND APP CON ★ <b>124.2 360.65</b>	CLNC DEL <b>126.8</b>	UNICOM <b>122.8 (CTAF) 0</b>
--	--------------------------	---------------------------------



CATEGORY	A		B		C		D	
	Min	Sec	Min	Sec	Min	Sec	Min	Sec
S-23	2000-1	776 (800-1)	2000-1 1/4	776 (800-1 1/4)	2000-2 1/2	776 (800-2 1/2)	NA	
CIRCLING	2000-1	776 (800-1)	2000-1 1/4	776 (800-1 1/4)	2000-2 1/2	776 (800-2 1/2)	NA	
CUBYS FIX MINIMUMS								
S-23	1760-1	536 (600-1)	1760-1 5/8	536 (600-1 5/8)	NA			
CIRCLING	1800-1	576 (600-1)	1960-1	736 (800-1)	1960-2	736 (800-2)	NA	

REIL Rwys 5 and 23  
MIRL Rwy 5-23

FAF to MAP 8.9 NM					
Knots	60	90	120	150	180
Min:Sec	8:54	5:56	4:27	3:34	2:58