

BLUBELL FOUR ARRIVAL  
(BLUBL.BLUBL4) 26MAR20

HOUSTON APP CON  
124.225 306.975  
EFD ATIS  
135.575 269.9  
HOU D-ATIS  
124.6  
SGR ATIS \*  
118.125  
TME ATIS  
119.525

WACO  
115.3 ACT  
Chan 100

LLANO  
108.2 ILO  
Chan 19  
N30°47.78'  
W98°47.24'  
L-19, H-6

CENTEX  
112.8 CWK  
Chan 75

MAVERICK  
113.1 TTT  
Chan 78

COWBOY  
116.2 CVE  
Chan 109

LEONA  
110.8 LOA  
Chan 45  
N31°07.44'  
W95°58.08'  
L-19, H-6

COLLEGE STATION  
113.3 CLL  
Chan 80  
N30°36.30'-W96°25.24'  
L-19-21, H-7

BLUBL  
9000  
N30°18.27'  
W96°18.18'

NAVASOTA  
115.9 TNV  
Chan 106

JAYJO  
N30°20.23'  
W96°48.90'  
L-19-21, H-7

SNDAY  
N29°56.42'  
W96°09.68'  
9000

INDUSTRY  
110.2 IDU  
Chan 39

NOTE: RADAR required.  
NOTE: JAYJO TRANSITION  
for Austin Terminal Area  
Departures only.



NOTE: Chart not to scale.

HOUSTON, TEXAS

### ARRIVAL ROUTE DESCRIPTION

#### COLLEGE STATION TRANSITION (CLL.BLUBL4):

From over CLL VORTAC on CLL R-153 to BLUBL. Thence . . .

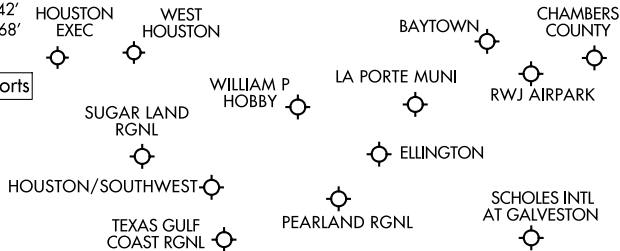
ELLVR TRANSITION (ELLVR.BLUBL4): From over ELLVR on CLL R-334 to CLL VORTAC, then on CLL R-153 to BLUBL. Thence . . .

JAYJO TRANSITION (JAYJO.BLUBL4): From over JAYJO on TNV R-266 to BLUBL. Thence . . .

LEONA TRANSITION (LOA.BLUBL4): From over LOA VORTAC on LOA R-209 and CLL R-029 to CLL VORTAC, then on CLL R-153 to BLUBL. Thence . . .

LLANO TRANSITION (LLO.BLUBL4): From over LLO VORTAC on LLO R-087 and CLL R-268 to CLL VORTAC, then on CLL R-153 to BLUBL. Thence . . .

. . . From over BLUBL on CLL R-153 to cross SNDAY at 9000, from SNDAY fly heading 153°. Expect vectors to final approach course at or prior to SNDAY.



(BLUBL.BLUBL4) 23110  
BLUBELL FOUR ARRIVAL

AL-198 (FAA)

HOUSTON, TEXAS

(CESAN, CESAN4) 22JUN17

CESAN FOUR ARRIVAL (RNAV)

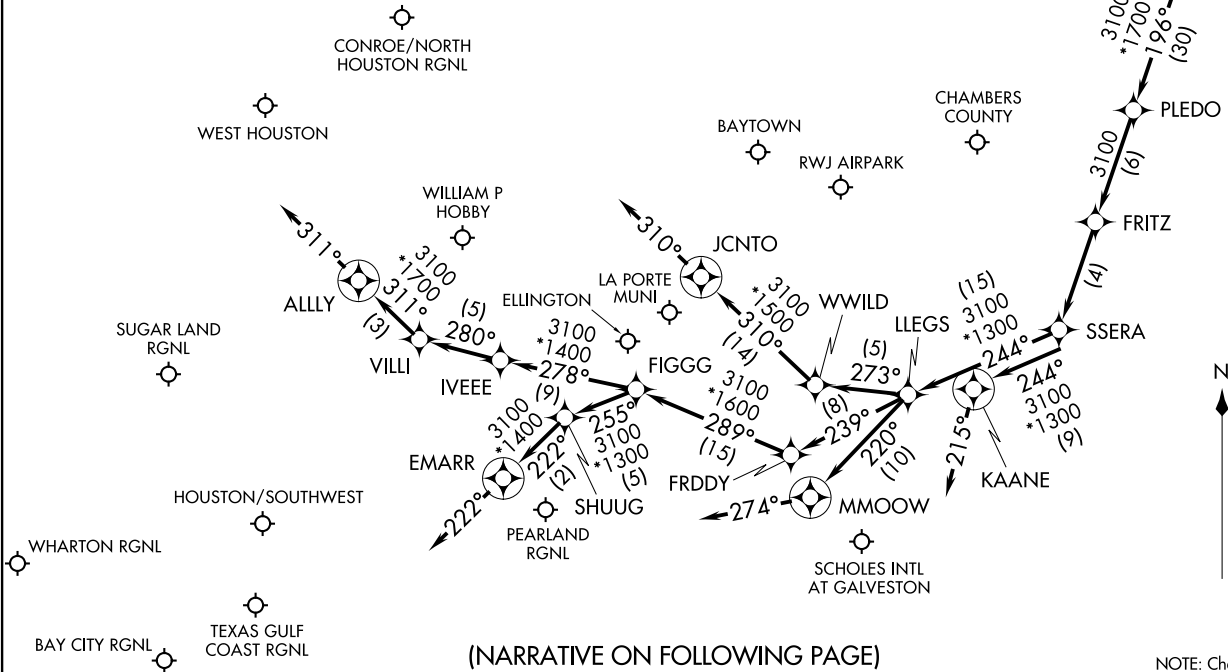
HOUSTON, TEXAS

HOUSTON APP CON  
121.3 377.1  
CXO ATIS  
118.325  
EFD ATIS  
135.575 269.9  
HOU D-ATIS  
124.6  
SGR ATIS \*  
118.125

NOTE: RADAR required.  
NOTE: RNAV 1.  
NOTE: DME/DME/IRU or GPS required.  
NOTE: DME/DME/IRU or GPS equipped Turbojet and Turboprop aircraft capable of 280K or greater must file the WAAPL (RNAV) STAR.

CESAN  
VERTICAL NAVIGATION  
PLANNING INFORMATION

Expect 11000



(NARRATIVE ON FOLLOWING PAGE)

NOTE: Chart not to scale.

(CESAN, CESAN4) 23222

AL-198 (FAA)

HOUSTON, TEXAS

# CESAN FOUR ARRIVAL (RNAV)

## ARRIVAL ROUTE DESCRIPTION

From CESAN on track 185° to CREPO, then on track 196° to PLEDO.

LANDING HOU RWYS 13L/R: From PLEDO on track 196° to FRITZ, then on track 196° to SSERA, then on track 244° to LLEGS, then on track 239° to FRDDY, then on track 289° to FIGGG, then on track 278° to IVEEE, then on track 280° to VILLI, then on track 311° to ALLY, then on track 311°. Expect vectors to final approach course.

LANDING HOU RWY 4: From PLEDO on track 196° to FRITZ, then on track 196° to SSERA, then on track 244° to LLEGS, then on track 239° to FRDDY, then on track 289° to FIGGG, then on track 255° to SHUUG, then on track 222° to EMARR, then on track 222°. Expect vectors to approach course.

LANDING HOU RWY 22: From PLEDO on track 196° to FRITZ, then on track 196° to SSERA, then on track 244° to LLEGS, then on track 273° to WWILD, then on track 310° to JCNT0, then on track 310°. Expect vectors to final approach course.

LANDING HOU RWYS 31L/R: From PLEDO on track 196° to FRITZ, then on track 196° to SSERA, then on track 244° to LLEGS, then on track 220° to MMOOW, then on track 274°. Expect vectors to final approach course.

ALL OTHER AIRPORTS: From CESAN on track 185° to CREPO, then on track 196° to PLEDO, then on track 196° to FRITZ, then on track 196° to SSERA, then on track 244° to KAANE, then on track 215°. Expect vectors to final approach course.

SC-5, 22 FEB 2024 to 21 MAR 2024

SC-5, 22 FEB 2024 to 21 MAR 2024

HUDZY FOUR ARRIVAL  
(HUDZY,HUDZY4) 100CT19

HOUSTON APP CON  
120.05 379.1  
CXO ATIS  
118.325  
DWH ATIS  
128.375  
EFD ATIS  
135.575 269.9  
HOU D-ATIS  
124.6  
IAH D-ATIS  
124.05  
SGR ATIS \*  
118.125  
TME ATIS  
119.525

CONROE/NORTH HOUSTON RGNL

HUMBLE  
116.6 IAH :...  
Chan 113

DAVID WAYNE HOOKS MEML

GEORGE BUSH INTCNL/HOUSTON

WEST HOUSTON  
HOUSTON EXEC



SUGAR LAND RGNL

HOUSTON/SOUTHWEST

TEXAS GULF COAST RGNL

WILLIAM P HOBBY

PEARLAND RGNL

LA PORTE MUNI

ELLINGTON

SCHOLES INTL AT GALVESTON

CLEVELAND MUNI

CLWSN  
N30°04.42'  
W94°55.13'

BAYTOWN  
RWJ AIRPARK

LUFKIN  
112.1 LFK :...  
Chan 58

WAPPL  
N30°13.91'  
W94°19.84'

VERTICAL NAVIGATION PLANNING INFORMATION

SAWMILL  
113.75 SWB :...  
Chan 84 (Y)  
N31°58.39-W92°40.63'

L-22, H-6

BRWCK  
N30°35.23'  
W93°42.36'

ALEXANDRIA  
116.1 AEX :...  
Chan 108  
N31°15.40-W92°30.06'

L-21-22, H-6

LAKE CHARLES  
113.4 LCH :...  
Chan 81

HUDZY  
N30°06.21'  
W94°48.53'

TURBOJET:  
Expect 14000 280K

CHAMBERS COUNTY

SABINE PASS  
115.4 SBI :...  
Chan 101

TRINITY  
114.75 MHF :...  
Chan 94(Y)

(NARRATIVE ON FOLLOWING PAGE) NOTE: Chart not to scale.

HUDZY FOUR ARRIVAL  
(HUDZY,HUDZY4) 23054

AL-198 (FAA)

HOUSTON, TEXAS

ARRIVAL ROUTE DESCRIPTION

ALEXANDRIA TRANSITION (AEX.HUDZY4): From over AEX VORTAC on AEX R-235 to WAPPL, then on IAH R-067 to HUDZY. Thence. . . .

SAWMILL TRANSITION (SWB.HUDZY4): From over SWB VOR/DME on SWB R-211 to BRWCK, then on AEX R-235 to WAPPL, then on IAH R-067 to HUDZY. Thence. . . .

. . . .from over HUDZY on IAH R-067 to CLWSN, then on IAH R-067 to SWWAA, then on heading 190°. Expect RADAR vectors to final approach course.

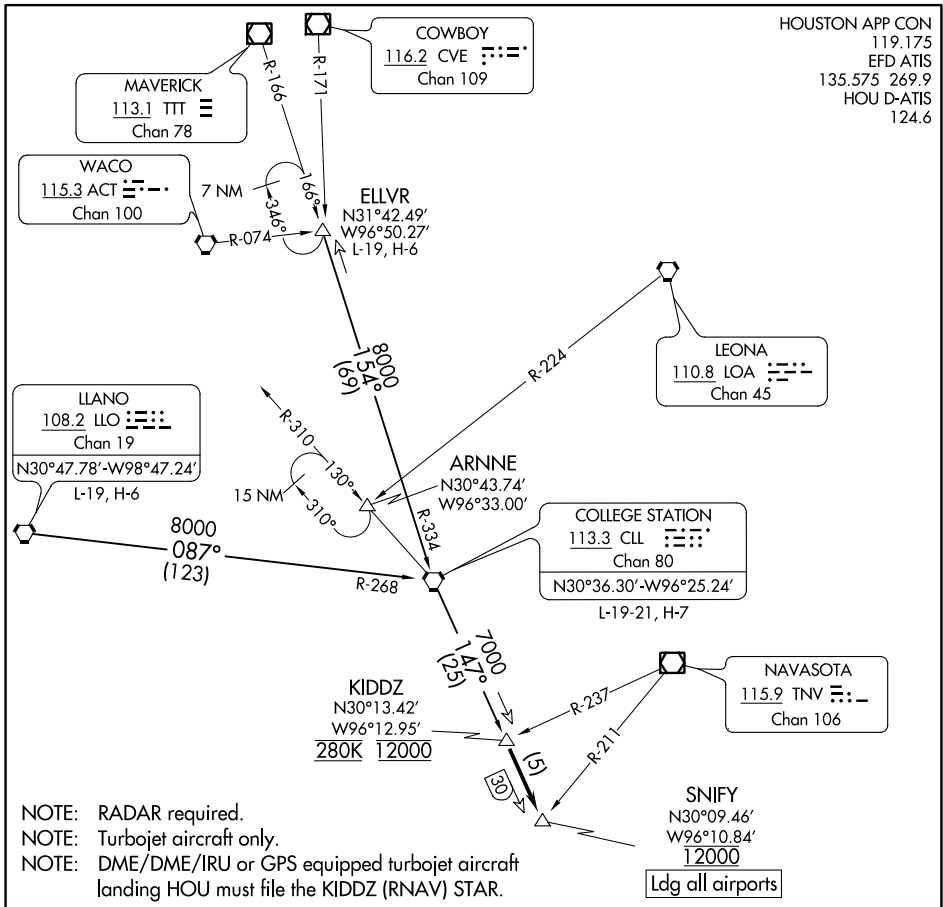
SC-5, 22 FEB 2024 to 21 MAR 2024

SC-5, 22 FEB 2024 to 21 MAR 2024

# SNIFY ONE ARRIVAL

HOUSTON, TEXAS

HOUSTON APP CON  
 119.175  
 EFD ATIS  
 135.575 269.9  
 HOU D-ATIS  
 124.6



SC-5, 22 FEB 2024 to 21 MAR 2024

SC-5, 22 FEB 2024 to 21 MAR 2024

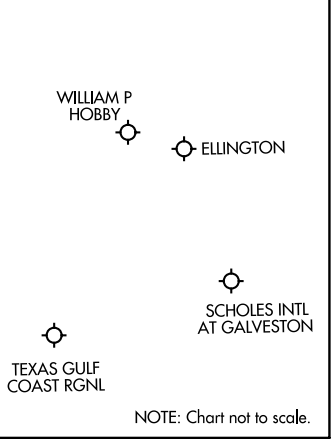
## ARRIVAL ROUTE DESCRIPTION

COLLEGE STATION TRANSITION (CLL.SNIFY1): From over CLL VORTAC on CLL R-147 to KIDDZ. Thence....

ELLVR TRANSITION (ELLVR.SNIFY1): From over ELLVR on CLL R-334 to CLL VORTAC, then on CLL R-147 to KIDDZ. Thence....

LLANO TRANSITION (LLO.SNIFY1): From over LLO VORTAC on LLO R-087 and CLL R-268 to CLL VORTAC, then on CLL R-147 to KIDDZ. Thence....

...from KIDDZ on CLL R-147 to cross SNIFY at 12000.  
 Expect vectors to final approach course at or prior to SNIFY.



NOTE: Chart not to scale.

# SNIFY ONE ARRIVAL

HOUSTON, TEXAS

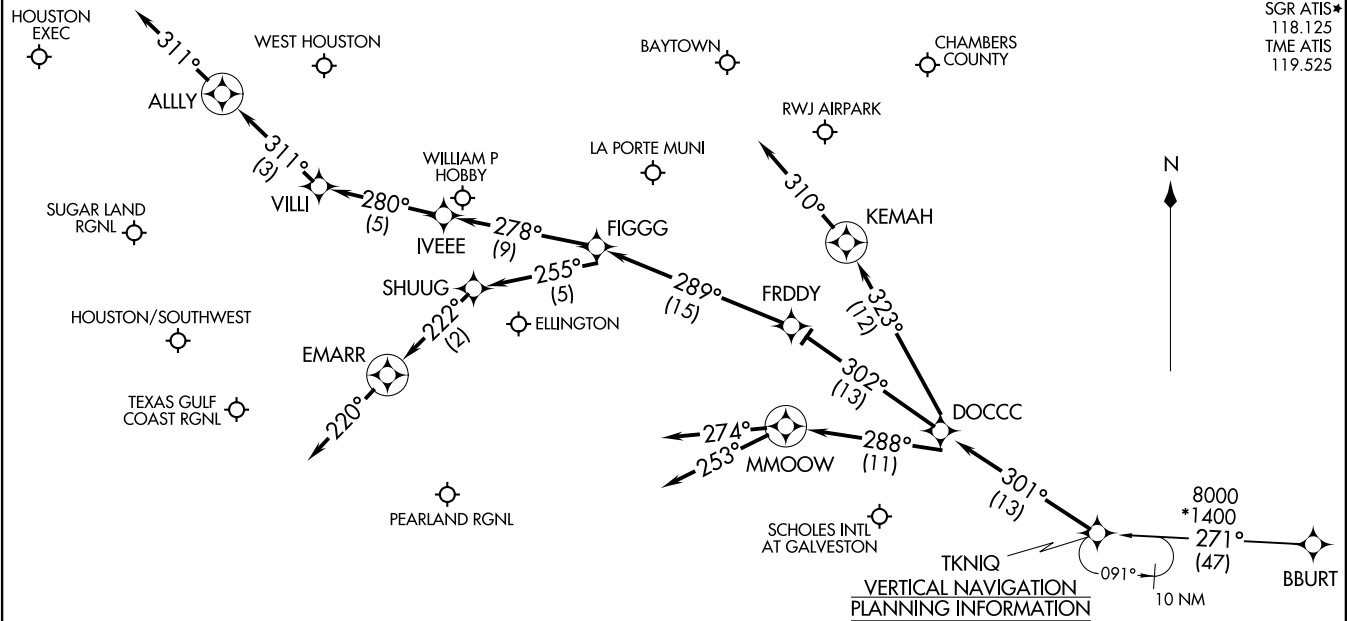
RNAV 1- DME/DME/IRU or GPS.  
RADAR required.

HOUSTON APP CON  
119.625 226.675  
EFD ATIS  
135.575 269.9  
HOU D-ATIS  
124.6  
SGR ATIS\*  
118.125  
TME ATIS  
119.525

TKNIQ THREE ARRIVAL (RNAV)  
(TKNIQ.TKNIQ3) 07OCT21

TKNIQ THREE ARRIVAL (RNAV)  
(TKNIQ.TKNIQ3) 21336

AI-198 (FAA)



NOTE: Turbojet and turboprop aircraft only.  
NOTE: ATC assigned only for aircraft landing HOU.

VERTICAL NAVIGATION  
PLANNING INFORMATION  
HOU TURBOJETS: Expect 12000 250K  
SOUTH SATELLITE TURBOJETS: Expect 12000 280K

(NARRATIVE ON FOLLOWING PAGE)

NOTE: Chart not to scale.

HOUSTON, TEXAS

HOUSTON, TEXAS

ARRIVAL ROUTE DESCRIPTION

BBURT TRANSITION (BBURT.TKNIQ3)

From TKNIQ on track 301° to DOCCC.

LANDING HOU RUNWAY 4: From DOCCC on track 302° to FRDDY, then on track 289° to FIGGG, then on track 255° to SHUUG, then on track 222° to EMARR, then on track 220°. Expect RADAR vectors to final approach course.

LANDING HOU RUNWAYS 13L/R: From DOCCC on track 302° to FRDDY, then on track 289° to FIGGG, then on track 278° to IVEEE, then on track 280° to VILLI, then on track 311° to ALLY, then on track 311°. Expect RADAR vectors to final approach course.

LANDING HOU RUNWAY 22: From DOCCC on track 323° to KEMAH, then on track 310°. Expect RADAR vectors to final approach course.

LANDING HOU RUNWAYS 31L/R: From DOCCC on track 288° to MMOOW, then on track 274°. Expect RADAR vectors to final approach course.

LANDING AXH, EFD, GLS, HPY, IWS, LBX, LVJ, SGR, TME, TØØ, T41, 54T:  
From DOCCC on track 288° to MMOOW, then on track 253°. Expect RADAR vectors to final approach course.

SC-5, 22 FEB 2024 to 21 MAR 2024

SC-5, 22 FEB 2024 to 21 MAR 2024



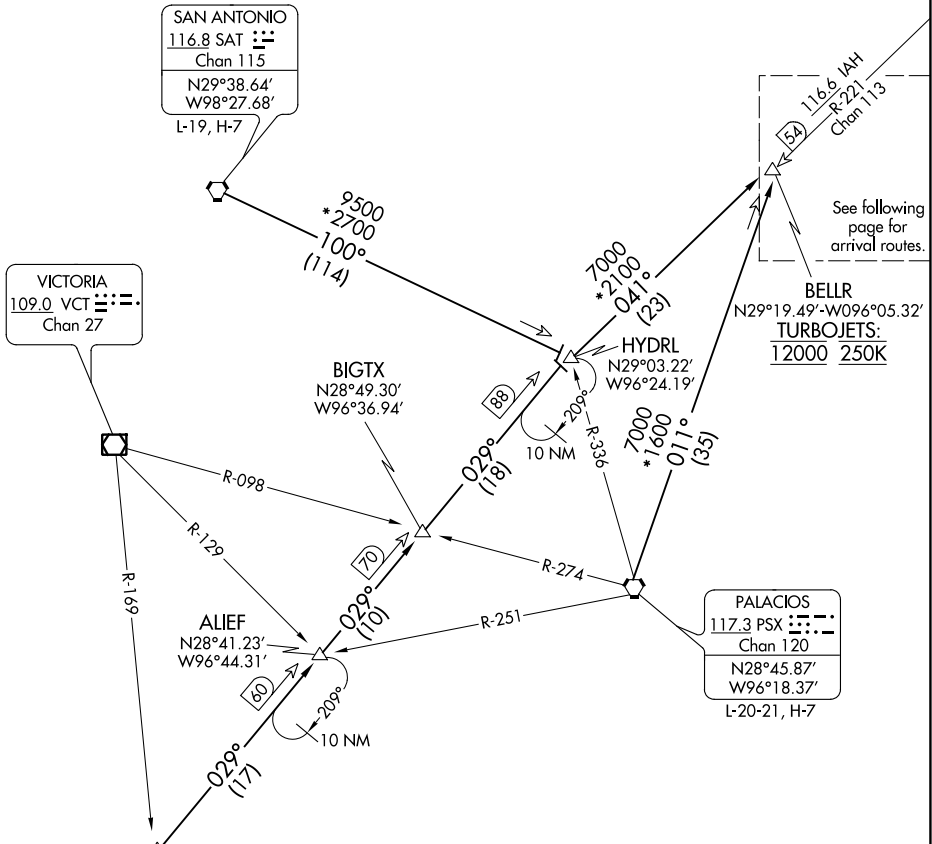
# TSHRT TWO ARRIVAL

## Transition Routes

HOUSTON, TEXAS

HOUSTON APP CON  
 119.175 291.675  
 EFD ATIS  
 135.575 269.9  
 HOU D-ATIS  
 124.6  
 SGR ATIS \*  
 118.125  
 TME ATIS  
 119.525

NOTE: RADAR required.  
 NOTE: DME/DME/IRU or GPS equipped turbojet and turboprop aircraft landing HOU must file the BELLR (RNAV) STAR.  
 NOTE: DME required.  
 NOTE: DME required for holding at HYDRL.



SC-5, 22 FEB 2024 to 21 MAR 2024

SC-5, 22 FEB 2024 to 21 MAR 2024

NOTE: Chart not to scale. (CONTINUED ON FOLLOWING PAGE)

**CORPUS CHRISTI TRANSITION (CRP.TSHRT2):** From over CRP VORTAC on CRP R-029 to HYDRL, then on IAH R-221 to BELLR. Thence . . . .

**PALACIOS TRANSITION (PSX.TSHRT2):** From over PSX VORTAC on PSX R-011 to BELLR. Thence . . . .

**SAN ANTONIO TRANSITION (SAT.TSHRT2):** From over SAT VORTAC on SAT R-100 to HYDRL, then on IAH R-221 to BELLR. Thence . . . .

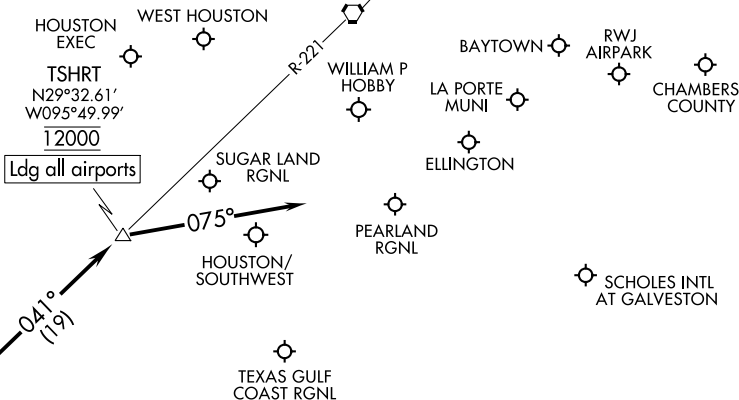
# TSHRT TWO ARRIVAL

## Transition Routes

HOUSTON, TEXAS

HOUSTON APP CON  
 119.175 291.675  
 EFD ATIS  
 135.575 269.9  
 HOU D-ATIS  
 124.6  
 SGR ATIS ★  
 118.125  
 TME ATIS  
 119.525

HUMBLE  
 116.6 IAH ☼☼☼  
 Chan 113



Ldg all airports

SC-5, 22 FEB 2024 to 21 MAR 2024

SC-5, 22 FEB 2024 to 21 MAR 2024

NOTE: RADAR required.  
 NOTE: DME/DME/IRU or GPS equipped turbojet and turboprop aircraft landing HOU must file the BELLR (RNAV) STAR.  
 NOTE: DME required.

NOTE: Chart not to scale.

ARRIVAL ROUTE DESCRIPTION

... from over BELLR on IAH R-221 to cross TSHRT at 12000. From TSHRT fly heading 075° for vectors to final approach course.

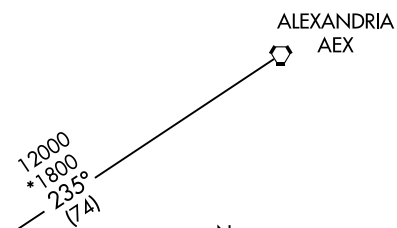
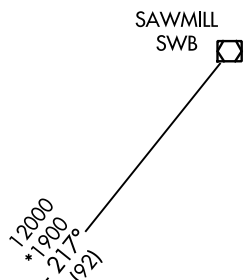
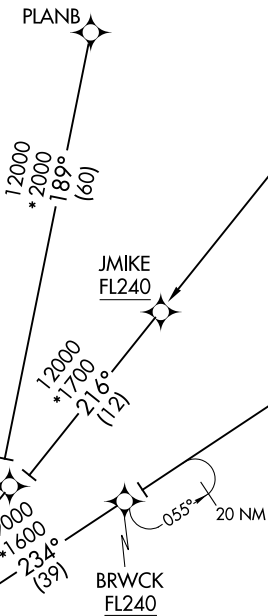
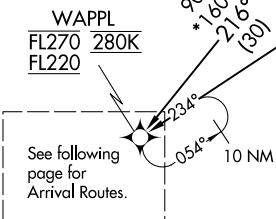
(WAPPL.WAPPL6) 070CT21

WAPPL SIX ARRIVAL (RNAV) Transition Routes

HOUSTON, TEXAS

HOUSTON APP CON  
120.05 379.1  
EFD ATIS  
135.575 269.9  
HOU D-ATIS  
124.6  
SGR ATIS ★  
118.125  
TME ATIS  
119.525

- NOTE: Expect runway assignment from Houston TRACON upon initial contact.
- NOTE: For turbojet and turboprop aircraft capable of 280K or greater only.
- NOTE: Turbojet aircraft descend via MACH number until intercepting 280K. Maintain 280K until slowed by the STAR.
- NOTE: ZEBBB TRANSITION ATC assigned only.
- NOTE: Except for aircraft departing SHV, PLANB TRANSITION is ATC assigned only. Do not file.



RNAV 1 - DME/DME/IRU or GPS.  
RADAR required.

(CONTINUED ON FOLLOWING PAGES)

- ALEXANDRIA TRANSITION (AEX.WAPPL6)
- PLANB TRANSITION (PLANB.WAPPL6)
- SAWMILL TRANSITION (SWB.WAPPL6)
- ZEBBB TRANSITION (ZEBBB.WAPPL6)

NOTE: Chart not to scale.

(WAPPL.WAPPL6) 21280

Transition Routes

AI-198 (FAA)

HOUSTON, TEXAS

WAPPL WAPPL6] 07OCT21

WAPPL SIX ARRIVAL (RNAV) Arrival Routes

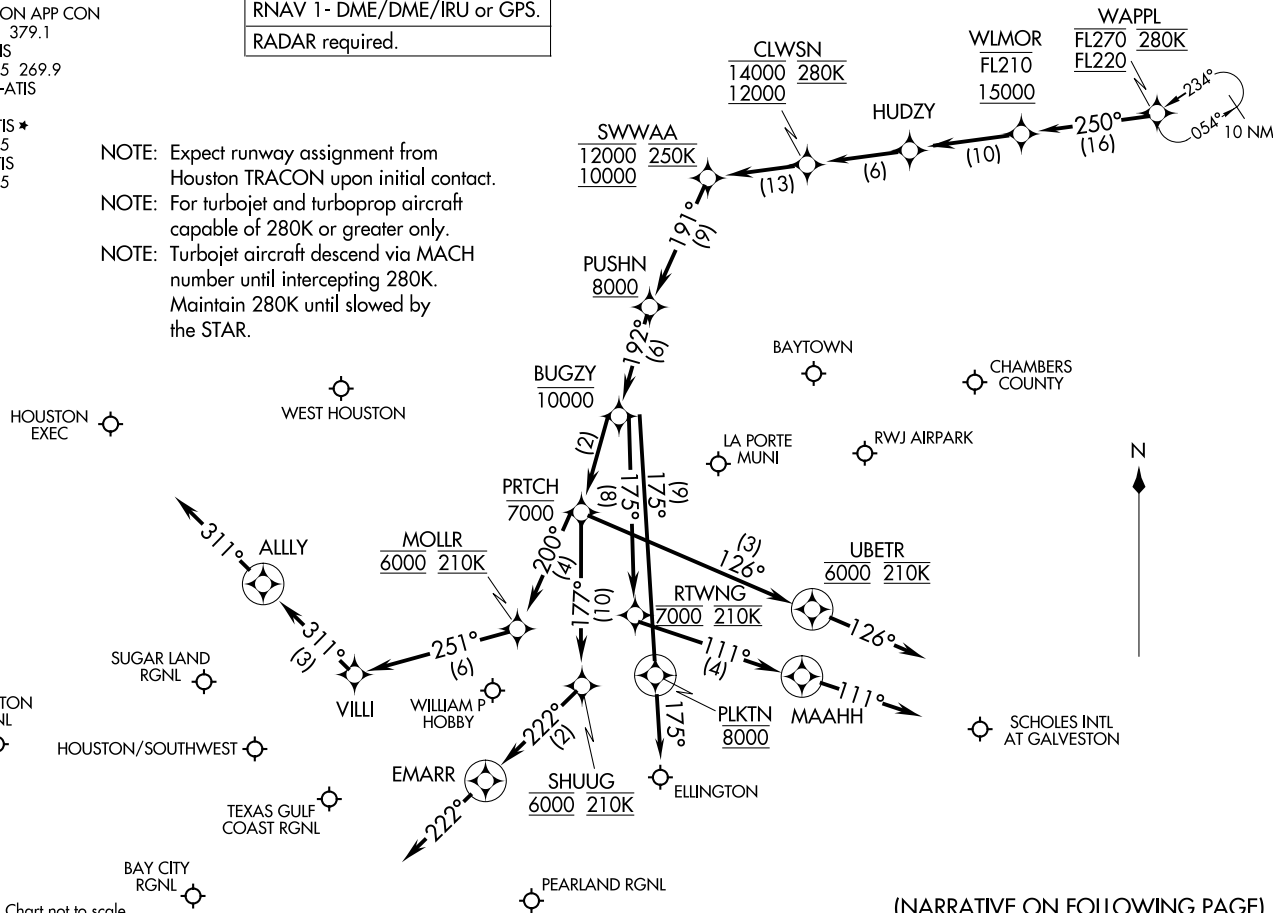
HOUSTON, TEXAS

HOUSTON APP CON  
120.05 379.1  
EFD ATIS  
135.575 269.9  
HOU D-ATIS  
124.6  
SGR ATIS \*  
118.125  
TME ATIS  
119.525

RNAV 1 - DME/DME/IRU or GPS.  
RADAR required.

- NOTE: Expect runway assignment from Houston TRACON upon initial contact.
- NOTE: For turbojet and turboprop aircraft capable of 280K or greater only.
- NOTE: Turbojet aircraft descend via MACH number until intercepting 280K. Maintain 280K until slowed by the STAR.

NOTE: Chart not to scale.



(NARRATIVE ON FOLLOWING PAGE)

WAPPL WAPPL6] 23054

AL1-98 (FAA)

HOUSTON, TEXAS

ARRIVAL ROUTE DESCRIPTION

From WAPPL on track 250° to cross WLMOR between 15000 and FL210, then on track 250° to HUDZY, then on track 250° to cross CLWSN between 12000 and 14000 and at 280K, then on track 250° to cross SWWAA between 10000 and 12000 and at 250K, then on track 191° to cross PUSHN at or above 8000.

LANDING HOU RUNWAY 4: From PUSHN on track 192° to cross BUGZY at or below 10000, then on track 192° to cross PRITCH at or below 7000, then on track 177° to cross SHUUG at 6000 and at 210K, then on track 222° to EMARR, then on track 222°. Expect RADAR vectors to final approach course.

LANDING HOU RUNWAYS 13L/R: From PUSHN on track 192° to cross BUGZY at or below 10000, then on track 192° to cross PRITCH at or below 7000, then on track 200° to cross MOLLR at 6000 and at 210K, then on track 251° to VILLI, then on track 311° to ALLY, then on track 311°. Expect RADAR vectors to final approach course.

LANDING HOU RUNWAY 22: From PUSHN on track 192° to cross BUGZY at or below 10000, then on track 175° to cross RTWNG at 7000 and at 210K, then on track 111° to MAAHH, then on track 111°. Expect RADAR vectors to final approach course.

LANDING HOU RUNWAYS 31L/R: From PUSHN on track 192° to cross BUGZY at or below 10000, then on track 192° to cross PRITCH at or below 7000, then on track 126° to cross UBETR at 6000 and at 210K, then on track 126°. Expect RADAR vectors to final approach course.

LANDING GLS, TME, AXH, HPY, T41, 54T, T00, SGR, ARM, BYY, LBX, LVJ, IWS, EFD: From WAPPL on track 250° to cross WLMOR between 15000 and FL210, then on track 250° to HUDZY, then on track 250° to cross CLWSN between 12000 and 14000 and at 280K, then on track 250° to cross SWWAA between 10000 and 12000 and at 250K, then on track 191° to cross PUSHN at or above 8000, then on track 192° to cross BUGZY at or below 10000, then on track 175° to cross PLKTN at 8000, then on track 175°. Expect RADAR vectors to final approach course.

SC-5, 22 FEB 2024 to 21 MAR 2024

SC-5, 22 FEB 2024 to 21 MAR 2024

OHIO FOUR ARRIVAL  
(OHIO.OHIO4) 22JUN17

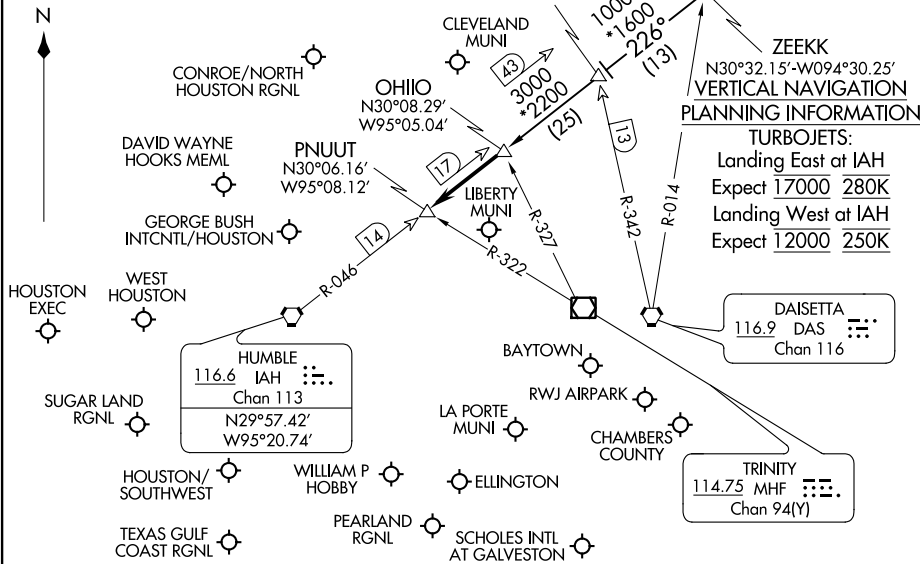
OHIO FOUR ARRIVAL  
(OHIO.OHIO4) 23222

HOUSTON APP CON  
120.05 379.1  
CXO ATIS  
118.325  
DWH ATIS  
128.375  
EFD ATIS  
135.575 269.9  
HOU D-ATIS  
124.6  
IAH D-ATIS  
124.05  
SGR ATIS\*  
118.125  
TME ATIS  
119.525

NOTE: DME/DME/IRU or GPS equipped turbojet aircraft landing IAH must file the GESNR/ZEEKK or DOOBI/SKNRD (RNAV) STAR.

NOTE: ATC assigned only for airports other than KIAH, KDWH and KCXO, T78 and 6R3.

NOTE: Chart not to scale.



**ARRIVAL ROUTE DESCRIPTION**

**ALEXANDRIA TRANSITION (AEX.OHIO4):**  
From over AEX VORTAC via AEX R-251 to LYMBO INT, then on IAH R-046 to OHIO INT. Thence . . .

**LUFKIN TRANSITION (LFK.OHIO4):**  
From over LFK VORTAC on LFK R-159 to ZEEKK INT, then on IAH R-046 to OHIO INT. Thence . . .

**GEORGE BUSH INTCNL AIRPORT /HOUSTON (IAH):**  
. . . from OHIO INT on IAH R-046 to PNUUT. Thence . . .  
**LANDING RUNWAYS 8L/R or 9:**  
. . . fly heading 265° for vectors to final approach course.  
**LANDING ALL OTHER RUNWAYS:**  
. . . expect vectors to final approach course at or prior to PNUUT.  
**FOR ALL OTHER AIRPORTS:**  
. . . from OHIO INT on IAH R-046 to PNUUT. Expect vectors to final approach course at or prior to PNUUT.

**PLANNING INFORMATION**

**TURBOJETS:**  
Landing East at IAH  
Expect 17000 280K  
Landing West at IAH  
Expect 12000 250K

HOUSTON, TEXAS

HOUSTON, TEXAS