

WAAS CH <b>70703</b> <b>W27A</b>	APP CRS <b>273°</b>	Rwy Idg TDZE Apt Elev	<b>5001</b> <b>738</b> <b>738</b>
--	------------------------	-----------------------------	---

# RNAV (GPS) RWY 27

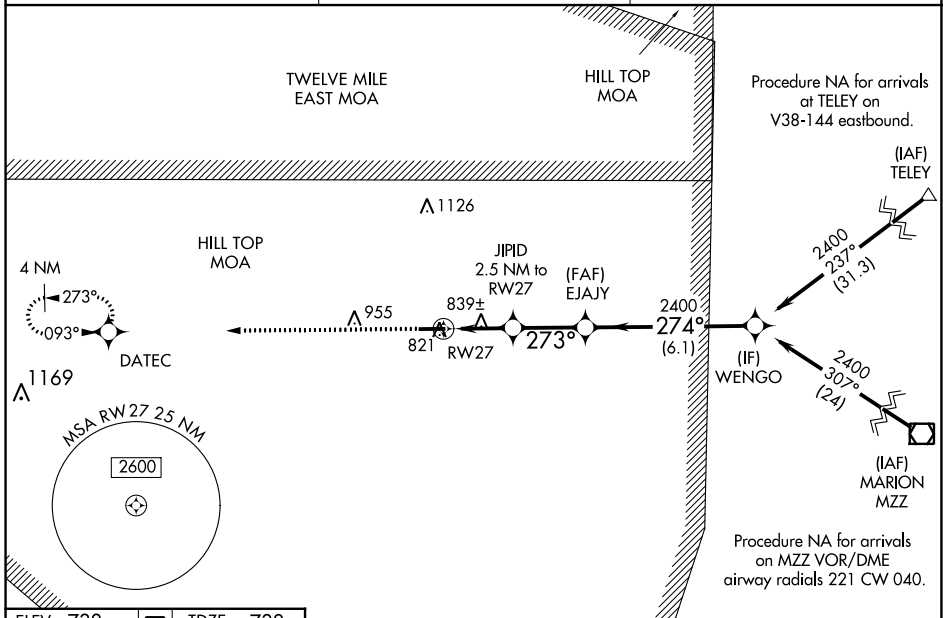
LOGANSPORT/CASS COUNTY (GGP)

**▽** Baro-VNAV NA when using Grissom ARB altimeter setting. For uncompensated Baro-VNAV systems, LNAV/VNAV NA below -16°C (4°F) or above 39°C (102°F). DME/DME RNP-0.3 NA.

**△ NA** VDP NA with Grissom ARB altimeter setting. When local altimeter setting not received, use Grissom ARB altimeter setting; increase LPV DA to 974 feet; increase LNAV/VNAV DA to 1056 feet and all visibilities ½ SM; increase all MDAs 40 feet and Circling visibility Cat D ½ SM.

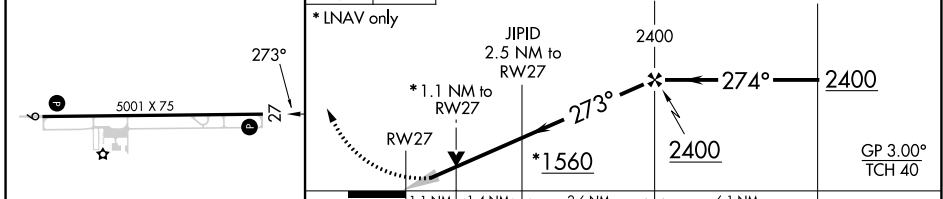
MISSED APPROACH: Climb to 2500 direct DATEC and hold.

AWOS-3P <b>118.5</b>	GRISSOM APP CON★ <b>121.05 338.275</b>	UNICOM <b>122.8 (CTAF) 0</b>
-------------------------	---	---------------------------------



ELEV 738	<b>D</b>	TDZE 738
----------	----------	----------

2500 DATEC VGSi and RNAV glidepath not coincident (VGSi Angle 3.00/TCH 25).



CATEGORY	A	B	C	D
LPV DA		938-¾	200 (200-¾)	
LNAV/VNAV DA		1020-7/8	282 (300-7/8)	
LNAV MDA	1100-1 362 (400-1)			
CIRCLING	1180-1	1200-1	1280-1½	1400-2
	442 (500-1)	462 (500-1)	542 (600-1½)	662 (700-2)

EC-2, 22 FEB 2024 to 21 MAR 2024

EC-2, 22 FEB 2024 to 21 MAR 2024

WAAS CH <b>45820</b> <b>W09A</b>	APP CRS <b>093°</b>	Rwy Idg TDZE Apt Elev	<b>5001</b> <b>736</b> <b>738</b>
--	------------------------	-----------------------------	---

# RNAV (GPS) RWY 9

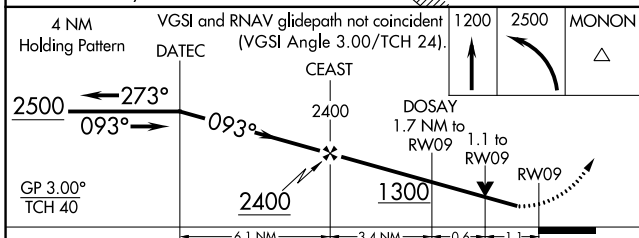
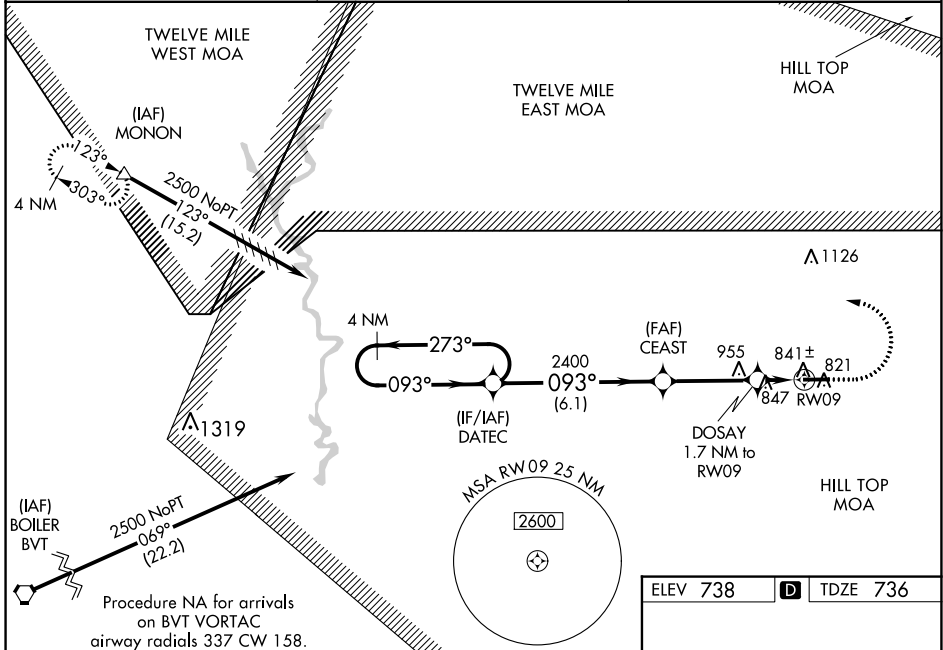
LOGANSPORT/CASS COUNTY (GGP)

**RNP APCH - GPS.**

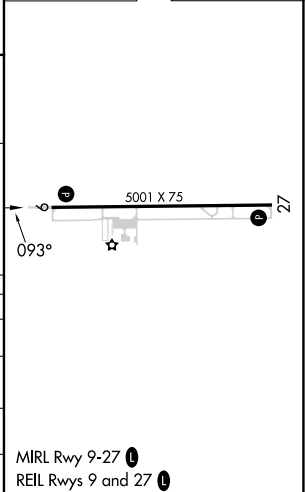
▼ **NA**  
For uncompensated Baro-VNAV systems, LNAV/VNAV NA below -16°C or above 39°C. When local altimeter setting not received, use Grissom ARB altimeter setting and increase LPV DA to 1026 feet, increase LNAV/VNAV DA to 1057 feet and visibilities all Cats 1/8 SM. Increase all MDAs 40 feet and LNAV visibility Cat C/D 1/8 SM, and Circling visibility Cat D 1/4 SM. Helicopter visibility reduction below 1 SM NA. Baro-VNAV and VDP NA when using Grissom ARB altimeter setting.

MISSED APPROACH: Climb to 1200, then climbing left turn to 2500 direct MONON and hold.

AWOS-3P <b>118.5</b>	GRISSOM APP CON★ <b>121.05 338.275</b>	UNICOM <b>122.8 (CTAF) 0</b>
-------------------------	---	---------------------------------



ELEV 738	<b>D</b> TDZE 736
----------	-------------------



CATEGORY	A	B	C	D
LPV DA		991-1	255 (300-1)	
LNAV/VNAV DA		1022-1	286 (300-1)	
LNAV MDA		1100-1	364 (400-1)	
CIRCLING	1180-1 442 (500-1)	1200-1 462 (500-1)	1280-1½ 542 (600-1½)	1400-2 662 (700-2)

EC-2, 22 FEB 2024 to 21 MAR 2024

EC-2, 22 FEB 2024 to 21 MAR 2024