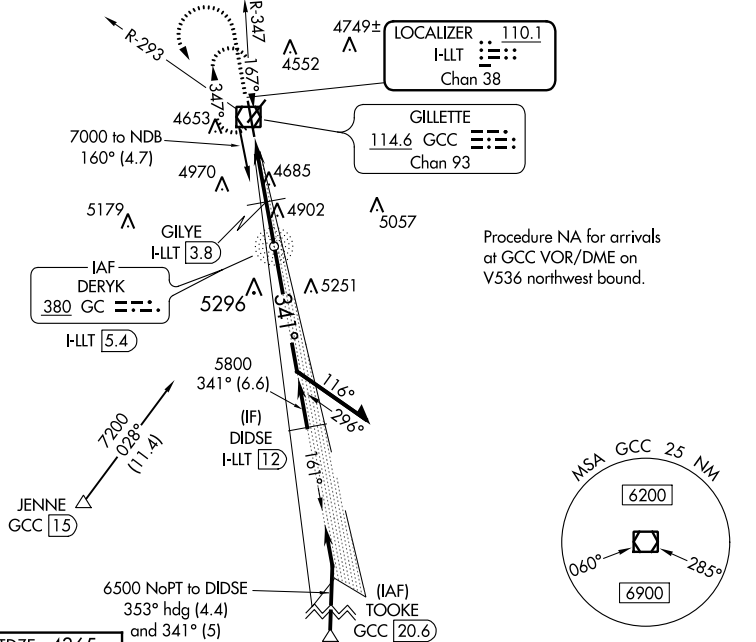


LOC/DME I-LLT 110.1 Chan 38	APP CRS 341°	Rwy Idg TDZE Apt Elev	7500 4365 4365
---	------------------------	-----------------------------	---

ILS or LOC RWY 34

NORTHEAST WYOMING RGNL (GCC)

ADF or DME required.		MALSR	MISSED APPROACH: Climb to 5700 then climbing left turn to 7000 on heading 150° and on GCC VOR/DME R-293 to GCC VOR/DME and hold, continue climb-in-hold to 7000.
ASOS 124.175	DENVER CENTER 135.6 363.025	UNICOM 122.95	CTAF 118.5

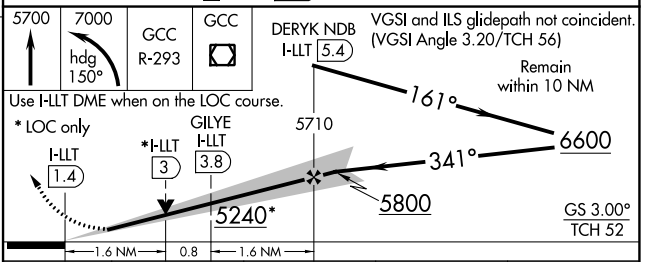
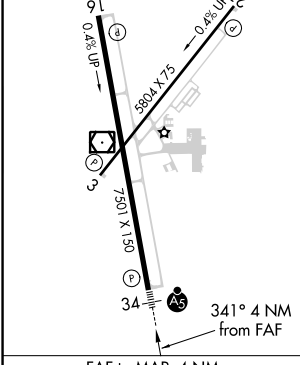


NW-1, 22 FEB 2024 to 21 MAR 2024

NW-1, 22 FEB 2024 to 21 MAR 2024

ELEV 4365	D	TDZE 4365
------------------	----------	------------------

HIRL Rwy 16-34
REIL Rwys 3, 16, and 21
MIRL Rwy 3-21



CATEGORY	A	B	C	D
S-ILS 34	4565-1/2 200 (200-1/2)			
S-LOC 34	5240-1/2 875 (900-1/2)	5240-3/4 875 (900-3/4)	5240-2	875 (900-2)
C CIRCLING	5240-1 1/4	875 (900-1 1/4)	5400-3	1035 (1100-3)
GILYE FIX MINIMUMS				
S-LOC 34	4940-1/2	575 (600-1/2)	4940-1 1/4	575 (600-1 1/4)
C CIRCLING	5040-1 675 (700-1)	5240-1 1/4 875 (900-1 1/4)	5400-3	1035 (1100-3)

GILLETTE, WYOMING
Amdt 4A 17JUN21

44°21'N-105°32'W

NORTHEAST WYOMING RGNL (GCC)

ILS or LOC RWY 34

WAAS CH 86221 W16A	APP CRS 161°	Rwy Idg TDZE Apt Elev	7500 4337 4365
--	------------------------	-----------------------------	---

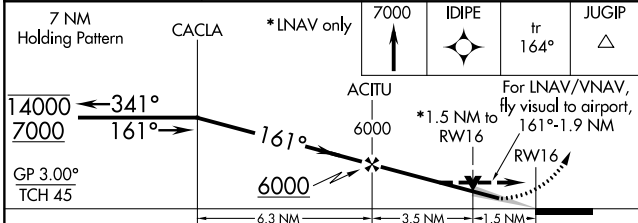
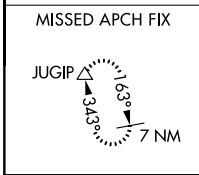
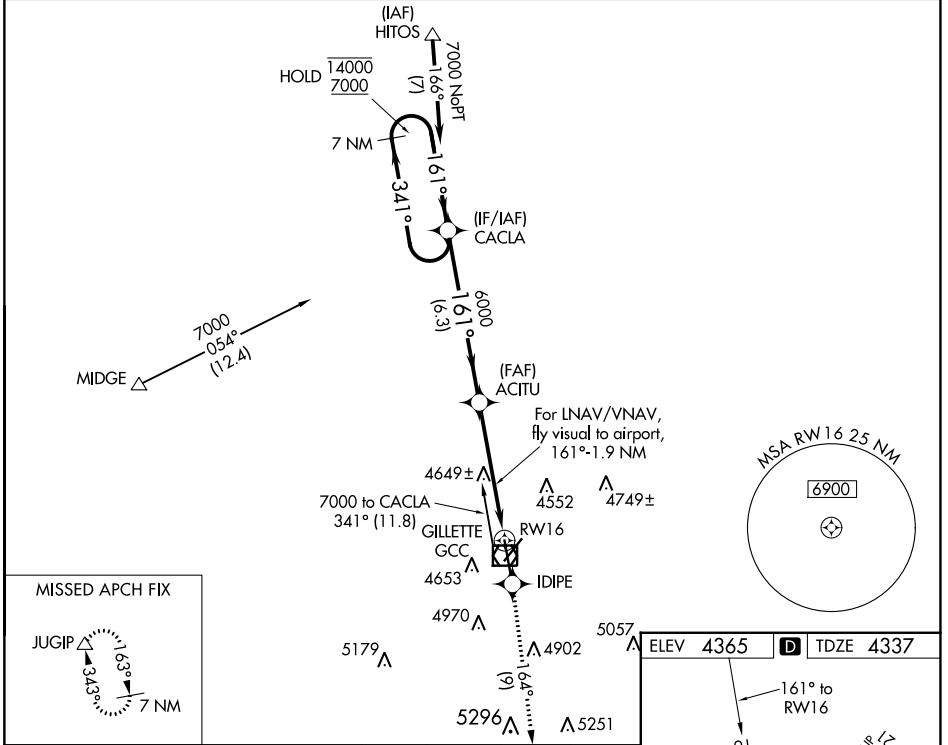
RNAV (GPS) RWY 16

NORTHEAST WYOMING RGNL (GCC)

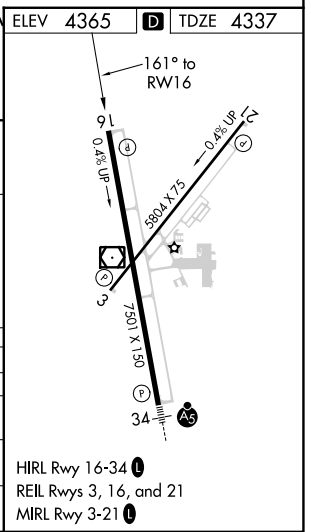
RNP APCH.
 ⚠ Circling Rwy 3 NA at night. For uncompensated Baro-VNAV systems, LNAV/VNAV NA below -23°C or above 54°C.

MISSED APPROACH: Climb to 7000 direct IDIPE and on track 164° to JUGIP and hold.

ASOS 124.175	DENVER CENTER 135.6 363.025	UNICOM 122.95	CTAF 118.5
------------------------	---------------------------------------	-------------------------	----------------------



CATEGORY	A	B	C	D
LPV DA		4660-1	323 (300-1)	
LNAV/VNAV DA		4980-1 7/8	643 (700-1 7/8)	
LNAV MDA	4900-1	563 (600-1)	4900-1 5/8	563 (600-1 5/8)
CIRCLING	5040-1 675 (700-1)	5240-1 1/4 875 (900-1 1/4)	5400-3	1035 (1100-3)



NW-1, 22 FEB 2024 to 21 MAR 2024

NW-1, 22 FEB 2024 to 21 MAR 2024

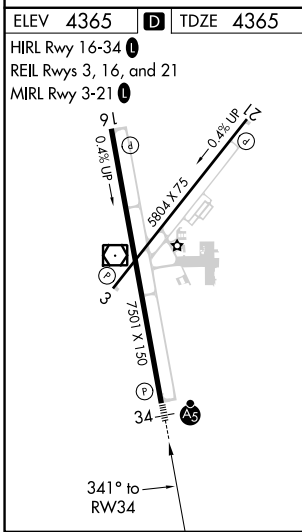
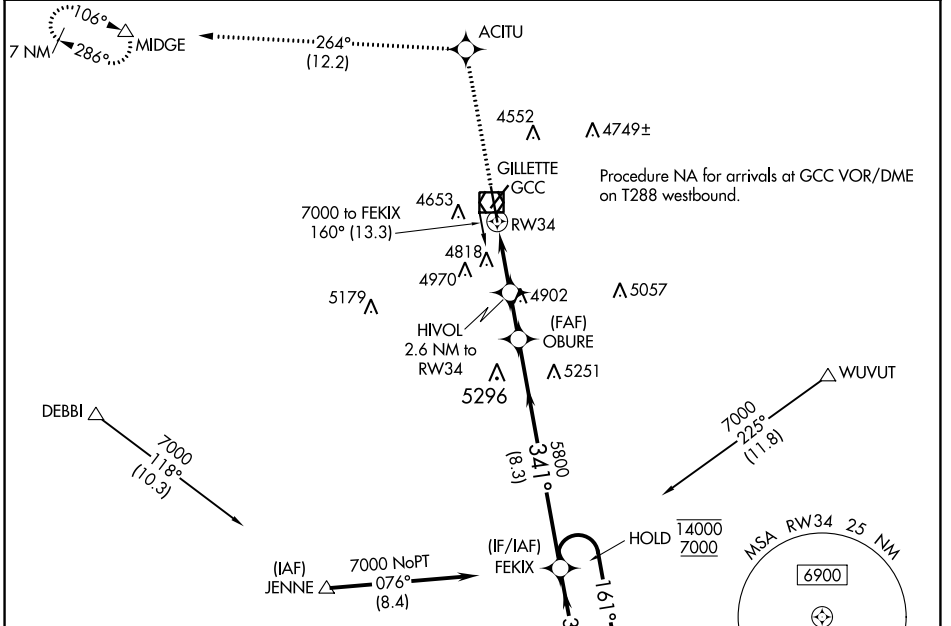
WAAS CH 86204 W34A	APP CRS 341°	Rwy Idg TDZE Apt Elev	7500 4365 4365
--	------------------------	-----------------------------	---

RNAV (GPS) RWY 34

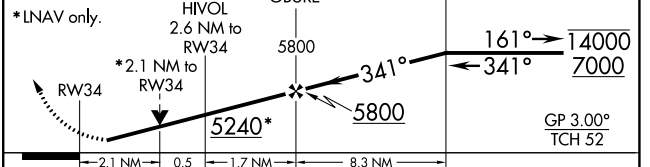
NORTHEAST WYOMING RGNL (GCC)

RNP APCH.	MALSR	MISSED APPROACH: Climb to 7000 direct ACITU and on track 264° to MIDGE and hold.
<p>⚠ Circling Rwy 3 NA at night. Inop table does not apply to LPV and LNAV/VNAV. For uncompensated Baro-VNAV systems, LNAV/VNAV NA below -23°C or above 54°C. For inop ALS, increase LNAV Cat A visibility to 1 SM, and Cat C/D to 2 SM. Rwy 34 helicopter visibility reduction below 3/4 SM NA.</p>		

ASOS 124.175	DENVER CENTER 135.6 363.025	UNICOM 122.95	CTAF 118.5
------------------------	---------------------------------------	-------------------------	----------------------



7000 ACITU	tr 264°	MIDGE	VGSI and RNAV glidepath not coincident. (VGSI Angle 3.20/TCH 56)	7 NM
				Holding Pattern



CATEGORY	A	B	C	D
LPV DA		4620-3/4	255 (300-3/4)	
LNAV/VNAV DA		5480-4	1115 (1200-4)	
LNAV MDA	5120-3/4	755 (800-3/4)	5120-13/4	755 (800-13/4)
<input checked="" type="checkbox"/> CIRCLING	5120-1 755 (800-1)	5240-11/4 875 (900-11/4)	5400-3	1035 (1100-3)

NW-1, 22 FEB 2024 to 21 MAR 2024

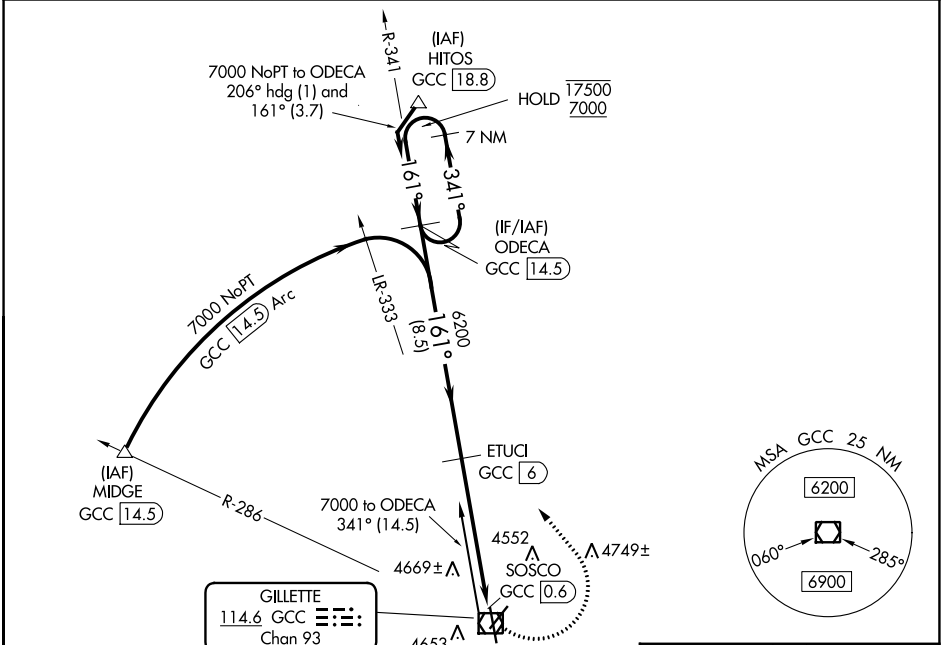
NW-1, 22 FEB 2024 to 21 MAR 2024

VOR/DME GCC 114.6 Chan 93	APP CRS 161°	Rwy Idg TDZE Apt Elev	7500 4337 4365
---	------------------------	-----------------------------	---

VOR RWY 16
NORTHEAST WYOMING RGNL (GCC)

DME required.	MISSED APPROACH: Climbing left turn to 7000 on heading 311° and GCC R-341 to ODECA/14.5 DME and hold.
<p>▼ Circling Rwy 3 NA at night. Rwy 16 helicopter visibility reduction below ¾ SM NA.</p>	

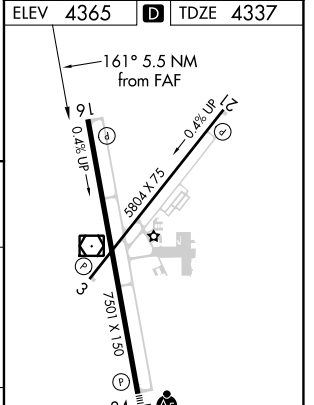
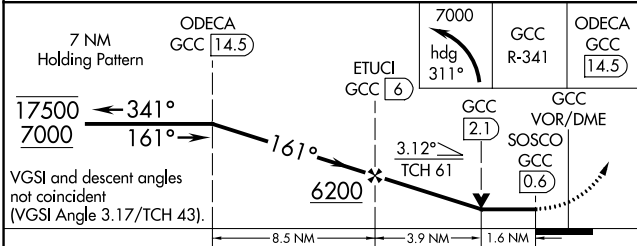
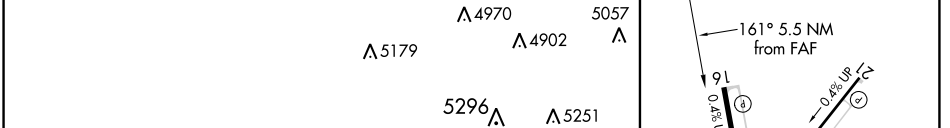
ASOS 124.175	DENVER CENTER 135.6 363.025	UNICOM 122.95	CTAF 118.5
------------------------	---------------------------------------	-------------------------	----------------------



NW-1, 22 FEB 2024 to 21 MAR 2024

NW-1, 22 FEB 2024 to 21 MAR 2024

ELEV 4365		TDZE 4337
-----------	--	-----------



CATEGORY	A	B	C	D
S-16	4920-1	583 (600-1)	4920-1¾	583 (600-1¾)
CIRCLING	5040-1 675 (700-1)	5240-1¼ 875 (900-1¼)	5400-3	1035 (1100-3)

HIRL Rwy 16-34

REIL Rws 3, 16, and 21

MIRL Rwy 3-21