

|  |                        |  |
|--|------------------------|--|
| LOC/DME I-GAO<br><b>109.1</b><br>Chan 28 | APP CRS<br><b>359°</b> | Rwy Idg <b>6500</b><br>TDZE <b>-2</b><br>Apt Elev <b>0</b> |
|--|------------------------|--|

# ILS or LOC RWY 36

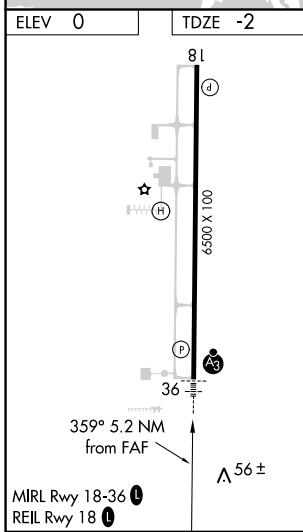
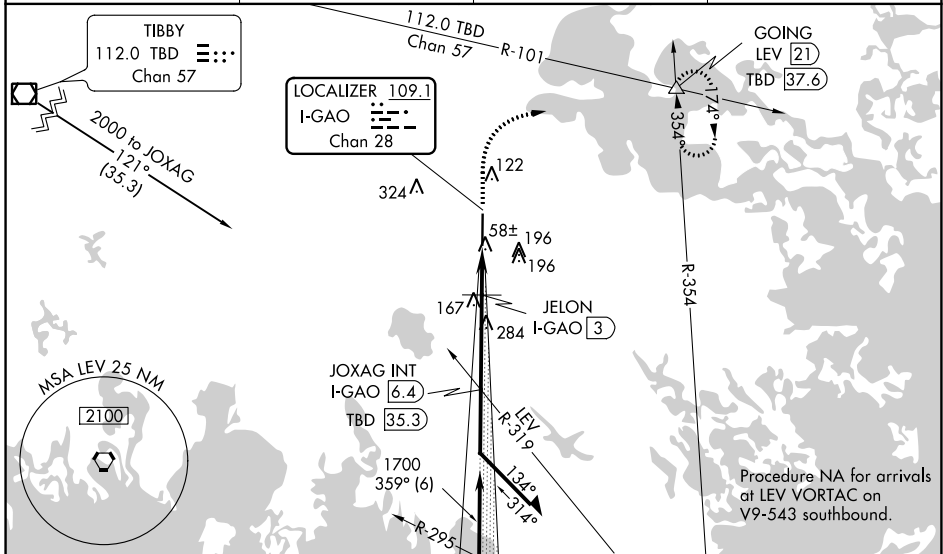
SOUTH LAFOURCHE LEONARD MILLER JR (GAO)

DME required.

SSALR

MISSED APPROACH: Climb to 1200, then climbing right turn to 2000 on heading 050° and TBD VOR/DME R-101 to GOING INT/LEV 21 DME and hold.

|                            |  |                           |                                 |
|----------------------------|--|---------------------------|---------------------------------|
| AWOS-3PT<br><b>118.175</b> | NEW ORLEANS APP CON<br><b>120.85 256.9</b> | CLNC DEL<br><b>120.85</b> | UNICOM<br><b>123.0 (CTAF) 0</b> |
|----------------------------|--|---------------------------|---------------------------------|



|            |                      |                      |                        |                      |                     |
|------------|----------------------|----------------------|------------------------|----------------------|---------------------|
| ELEV 0     | TDZE -2              |                      |                        |                      |                     |
| 1200       | 2000                 | TBD R-101            | GOING                  | JOXAG INT I-GAO 6.4  | Remain within 10 NM |
| ↑          | hdg 050°             |                      | △                      |                      |                     |
| *LOC only. | *I-GAO 2.1           | JELON I-GAO 3        | 1700                   | 179°                 | 2000                |
| I-GAO 1.2  | 620*                 | 359°                 | 1700                   |                      |                     |
| 0.9 NM     |                      | 0.9 NM               |                        | 3.4 NM               |                     |
| CATEGORY   | A                    | B                    | C                      | D                    |                     |
| S-ILS 36   | 198-½                |                      | 200 (200-½)            |                      |                     |
| S-LOC 36   | 320-½                |                      | 322 (400-½)            |                      |                     |
| CIRCLING   | 440-1<br>440 (500-1) | 560-1<br>560 (600-1) | 640-1¾<br>640 (700-1¾) | 640-2<br>640 (700-2) |                     |

SC-4, 22 FEB 2024 to 21 MAR 2024

SC-4, 22 FEB 2024 to 21 MAR 2024

|  |                        |   |
|--|------------------------|---|
| WAAS<br>CH <b>61308</b><br><b>W18A</b> | APP CRS<br><b>179°</b> | Rwy ldg <b>6500</b><br>TDZE <b>0</b><br>Apt Elev <b>0</b> |
|--|------------------------|---|

# RNAV (GPS) RWY 18

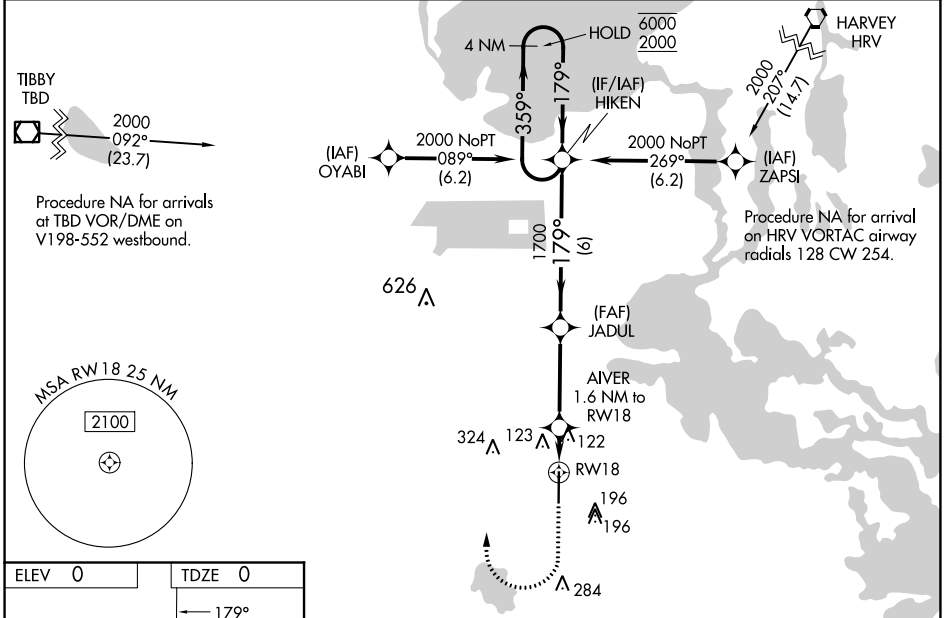
SOUTH LAFOURCHE LEONARD MILLER JR (G.A.O)

RNP APCH - GPS.

**⚠** Rwy 18 helicopter visibility reduction below  $\frac{3}{4}$  SM NA. For uncompensated Baro-VNAV systems, LNAV/VNAV NA below -15°C or above 54°C. When local altimeter setting not received, use Louis Armstrong New Orleans Intl altimeter setting: increase LPV DA to 396 feet and all visibilities  $\frac{1}{4}$  SM; increase LNAV/VNAV DA to 361 feet, visibility Cats A and B  $\frac{1}{4}$  SM and Cats C and D  $\frac{1}{2}$  SM; increase all MDAs 80 feet and LNAV visibility Cats C and D  $\frac{3}{8}$  SM and Circling visibility Cats C and D  $\frac{1}{4}$  SM. Baro-VNAV and VDP NA when using Louis Armstrong New Orleans Intl altimeter setting.

**MISSED APPROACH:** Climb to 520 then climbing right turn to 2000 direct HIKEN and hold.

|                            |  |                           |                                 |
|----------------------------|--|---------------------------|---------------------------------|
| AWOS-3PT<br><b>118.175</b> | NEW ORLEANS APP CON<br><b>120.85 256.9</b> | CINC DEL<br><b>120.85</b> | UNICOM<br><b>123.0 (CTAF) 0</b> |
|----------------------------|--|---------------------------|---------------------------------|

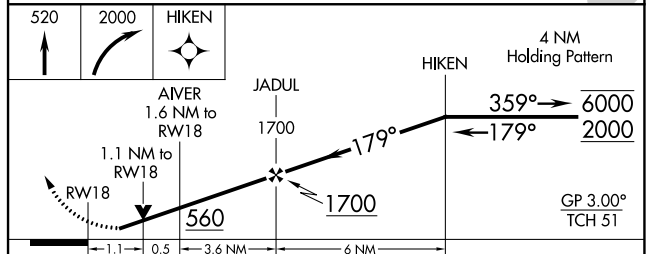
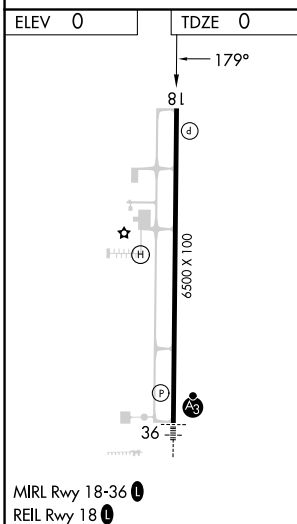
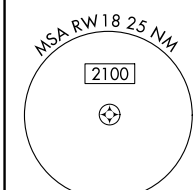


TIBBY TBD  
2000 092° (23.7)

Procedure NA for arrivals at TBD VOR/DME on V198-552 westbound.

HARVEY HRV  
2000 205° (14.7)

Procedure NA for arrival on HRV VORTAC airway radials 128 CW 254.



| CATEGORY          | A                    | B                         | C   | D                    |
|-------------------|----------------------|---------------------------|---|----------------------|
| LPV DA            | 319-1 319 (400-1)    |                           |   |                      |
| LNAV/VNAV DA      | 284- $\frac{7}{8}$   | 284 (300- $\frac{7}{8}$ ) | 284-1   | 284 (300-1)          |
| LNAV MDA          | 380-1                | 380 (400-1)               | 380- $\frac{13}{4}$<br>380 (400- $\frac{13}{4}$ ) | 380-2<br>380 (400-2) |
| <b>C</b> CIRCLING | 440-1<br>440 (500-1) | 560-1<br>560 (600-1)      | 640- $\frac{13}{4}$<br>640 (700- $\frac{13}{4}$ ) | 640-2<br>640 (700-2) |

SC-4, 22 FEB 2024 to 21 MAR 2024

SC-4, 22 FEB 2024 to 21 MAR 2024

|  |                        |  |
|--|------------------------|--|
| WAAS<br>CH <b>69608</b><br><b>W36A</b> | APP CRS<br><b>359°</b> | Rwy Idg <b>6500</b><br>TDZE <b>-2</b><br>Apt Elev <b>0</b> |
|--|------------------------|--|

# RNAV (GPS) RWY 36

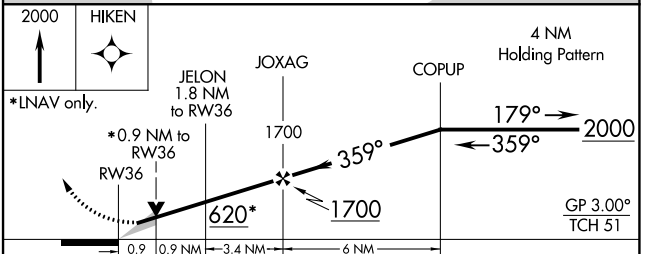
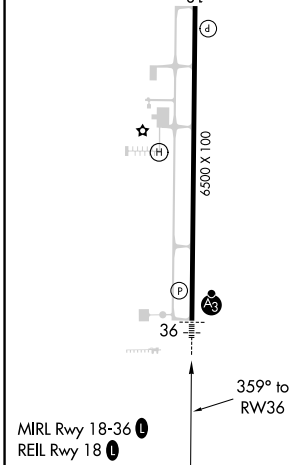
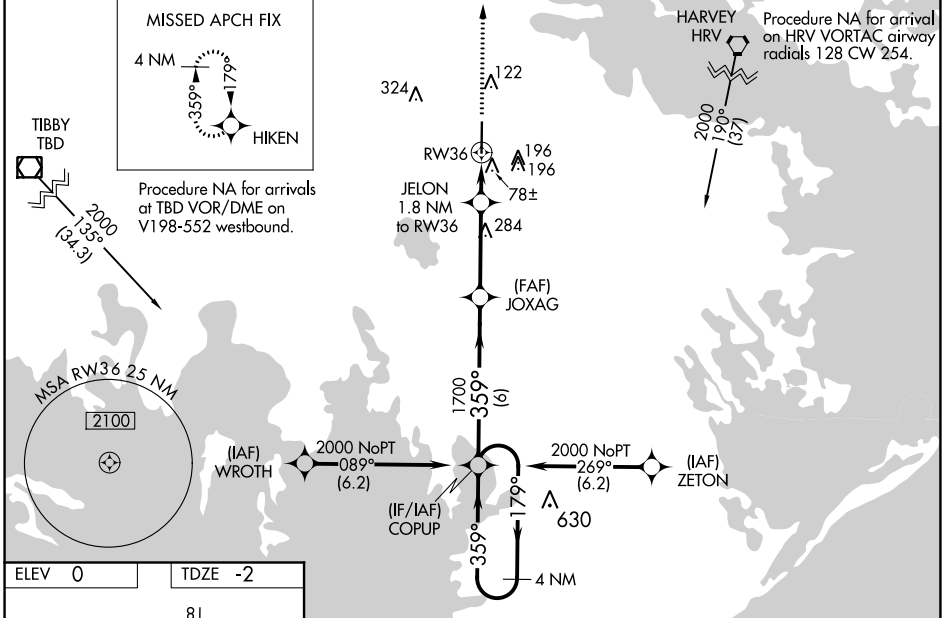
SOUTH LAFOURCHE LEONARD MILLER JR (G.A.O)

RNP APCH.

For uncompensated Baro-VNAV systems, LNAV/VNAV NA below -15°C or above 54°C. For inop ALS, increase LNAV/VNAV all Cats visibility to ¾ SM and LNAV Cat C and D visibility to 1 SM. When local altimeter setting not received, use Louis Armstrong New Orleans Intl altimeter setting and increase LPV DA to 275 feet, LNAV/VNAV DA to 325 feet and all MDA 80 feet and increase LNAV/VNAV all Cats visibility ½ SM, LNAV Cat C and D visibility ½ SM and Circling Cat C and D visibility ½ SM. For inop ALS, when using Louis Armstrong New Orleans Intl altimeter setting, increase LPV and LNAV/VNAV all Cats visibility ¾ SM. Baro-VNAV and VDP NA when using Louis Armstrong New Orleans Intl altimeter setting.

SSALR MISSED APPROACH: Climb to 2000 direct HIKEN and hold.

|                            |  |                           |                               |
|----------------------------|--|---------------------------|-------------------------------|
| AWOS-3PT<br><b>118.175</b> | NEW ORLEANS APP CON<br><b>120.85 256.9</b> | CLNC DEL<br><b>120.85</b> | UNICOM<br><b>123.0 (CTAF)</b> |
|----------------------------|--|---------------------------|-------------------------------|



| CATEGORY     | A                    | B                    | C                      | D                    |
|--------------|----------------------|----------------------|------------------------|----------------------|
| LPV DA       |                      | 198-½                | 200 (200-½)            |                      |
| LNAV/VNAV DA |                      | 248-½                | 250 (300-½)            |                      |
| LNAV MDA     | 340-½                | 342 (400-½)          | 340-⅝                  | 342 (400-⅝)          |
| CIRCLING     | 440-1<br>440 (500-1) | 560-1<br>560 (600-1) | 640-1¾<br>640 (700-1¾) | 640-2<br>640 (700-2) |

SC-4, 22 FEB 2024 to 21 MAR 2024

SC-4, 22 FEB 2024 to 21 MAR 2024