



DEPARTURE ROUTE DESCRIPTION

TAKEOFF RUNWAY 6: Turn right heading 120° for vectors to SLI VORTAC, thence. . . .

TAKEOFF RUNWAY 24: Turn left heading 120° for vectors to SLI VORTAC, thence. . . .

. . . .on (transition) or (assigned route). Maintain 2000 and expect filed altitude 10 minutes after departure.

HECTOR TRANSITION (ANAHM1.HEC): From over SLI VORTAC on SLI R-058 and PDZ R-238 to PDZ VORTAC, then on PDZ R-012 to APLES, then on HEC R-232 to HEC VORTAC.

LAKE HUGHES TRANSITION (ANAHM1.LHS): From over SLI VORTAC on SLI R-058 and PDZ R-238 to POXKU, then on POM R-164 to BAYJY, then on VNY R-095 to DARTS, then on LHS R-139 to LHS VORTAC.

VENTURA TRANSITION (ANAHM1.VTU): From over SLI VORTAC on SLI R-251 to WILMA, then on LAX R-123 to LAX VORTAC, then on LAX R-276 to SADDE, then on VTU R-093 to VTU VOR/DME.

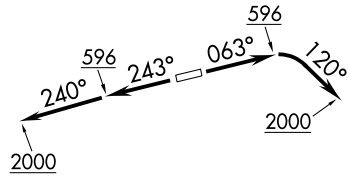
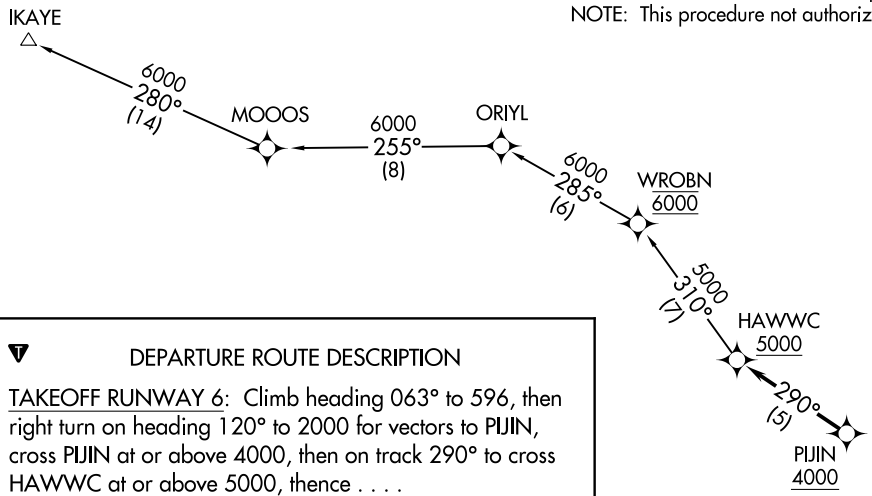
SW-3, 09 SEP 2021 to 07 OCT 2021

SW-3, 09 SEP 2021 to 07 OCT 2021

**TOP ALTITUDE:
6000**

ATIS
125.05
GND CON
121.8
SOCAL DEP CON
125.35 316.125

NOTE: RADAR required.
NOTE: RNAV 1.
NOTE: DME/DME/IRU or GPS required.
NOTE: This procedure not authorized for turbojet aircraft.



DEPARTURE ROUTE DESCRIPTION

TAKEOFF RUNWAY 6: Climb heading 063° to 596, then right turn on heading 120° to 2000 for vectors to PIJIN, cross PIJIN at or above 4000, then on track 290° to cross HAWWC at or above 5000, thence

TAKEOFF RUNWAY 24: Climb heading 243° to 596, then on heading 240° to 2000 for vectors to PIJIN, cross PIJIN at or above 4000, then on track 290° to cross HAWWC at or above 5000, thence

. . . . on (transition). Maintain 6000. Expect higher altitude 10 minutes after departure.

IKAYE TRANSITION (HAWWC3.IKAYE)

TAKEOFF MINIMUMS
Rwy 6: Standard with minimum climb of 280 feet per NM to 600.
Rwy 24: Standard.

NOTE: Chart not to scale.

HAWWC THREE DEPARTURE (RNAV)
(HAWWC3:HAWWC) 19Jul18

(HAWWC3:HAWWC) 18200
HAWWC THREE DEPARTURE (RNAV)

FULLERTON, CALIFORNIA
FULLERTON MUNI (F71)

FULLERTON MUNI (F71)
FULLERTON, CALIFORNIA