

NDB FOZ 345	APP CRS 160°	Rwy Idg TDZE Apt Elev	3998 1351 1351
-----------------------	------------------------	-----------------------------	---

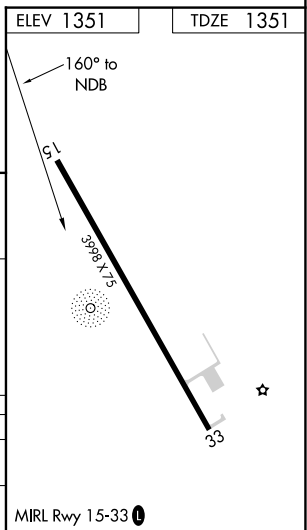
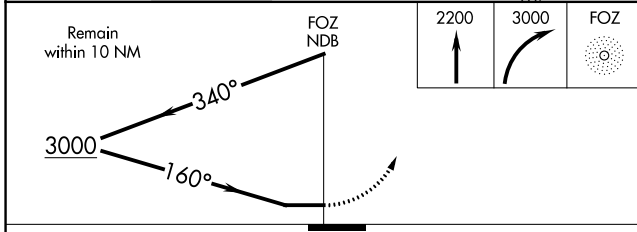
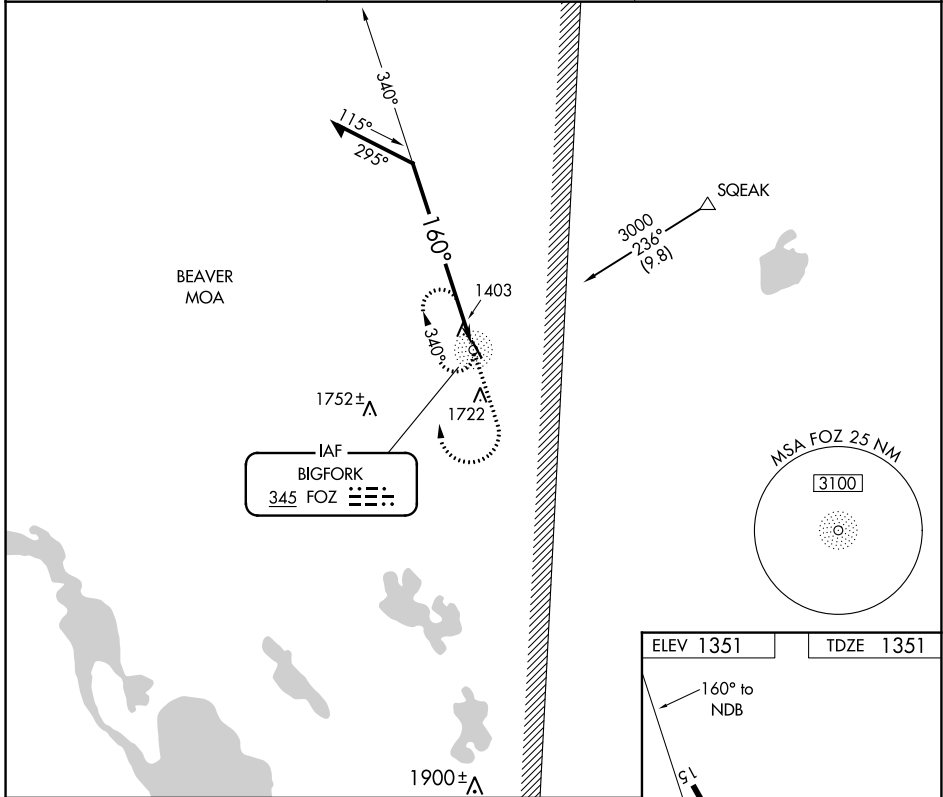
NDB RWY 15

BIGFORK MUNI (F0Z)

▼ Procedure not authorized when BEAVER MOA is active. Night landing Rwy 33 NA. Helicopter visibility reduction below 3/4 SM NA. When local altimeter setting not received, use Grand Rapids altimeter setting and increase all MDA 100 feet.

▲ NA MISSED APPROACH: Climb to 2200 then climbing right turn to 3000 direct FOZ NDB and hold.

AWOS-3PT 118.025	MINNEAPOLIS CENTER 127.9 281.45	CTAF 122.9 0
----------------------------	---	------------------------



CATEGORY	A	B	C	D
S-15	1840-1	489 (500-1)		NA
CIRCLING	1840-1 489 (500-1)	2040-1 689 (700-1)		NA

NC-1, 22 FEB 2024 to 21 MAR 2024

NC-1, 22 FEB 2024 to 21 MAR 2024

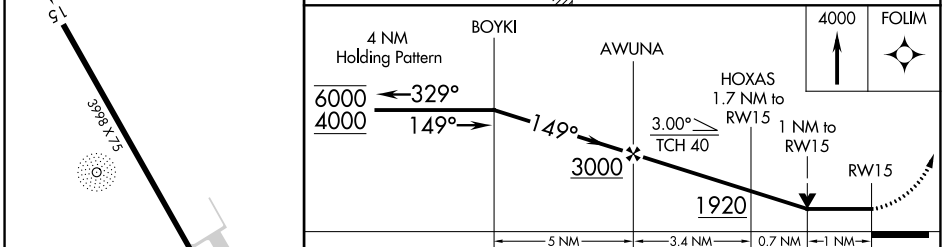
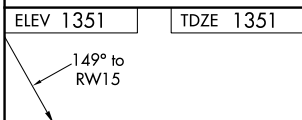
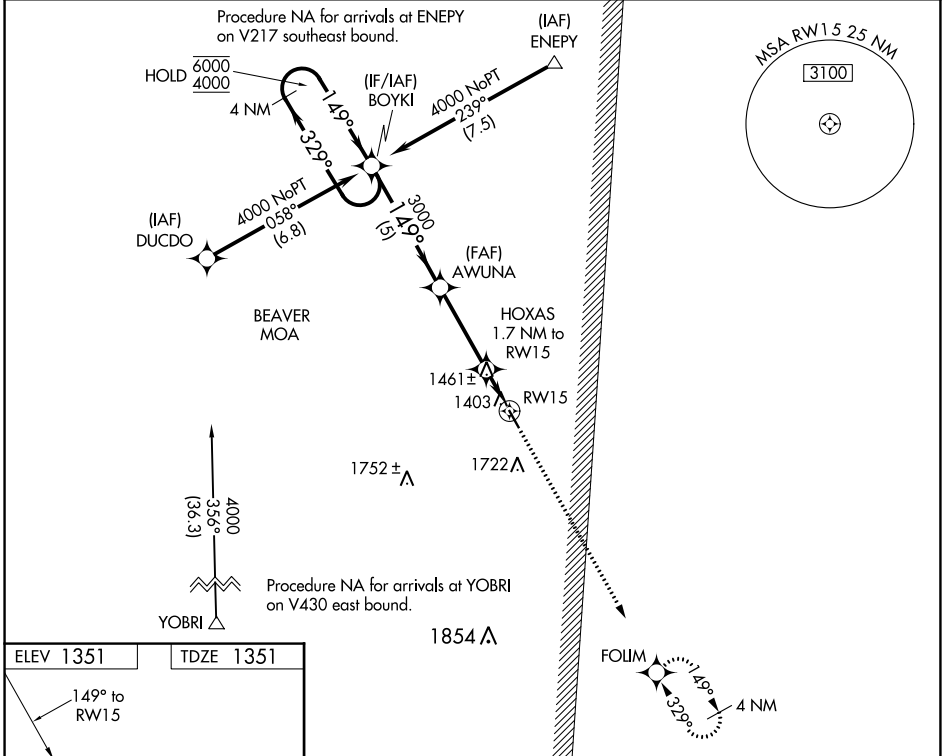
WAAS CH 78126 W15A	APP CRS 149°	Rwy Idg TDZE Apt Elev	3998 1351 1351
--	------------------------	-----------------------------	---

RNAV (GPS) RWY 15

BIGFORK MUNI (F0Z)

RNP APCH.	MISSED APPROACH: Climb to 4000 direct FOLIM and hold, continue climb-in-hold to 4000.
<p>▼ Rwy 15 helicopter visibility reduction below 3/4 SM NA.</p>	

AWOS-3PT 118.025	MINNEAPOLIS CENTER 127.9 281.45	CTAF 122.90
----------------------------	---	-----------------------



CATEGORY	A	B	C	D
LP MDA	1720-1	369 (400-1)		NA
LNAV MDA	1740-1	389 (400-1)		NA
CIRCLING	1780-1 429 (500-1)	2040-1 689 (700-1)		NA

NC-1, 22 FEB 2024 to 21 MAR 2024

NC-1, 22 FEB 2024 to 21 MAR 2024

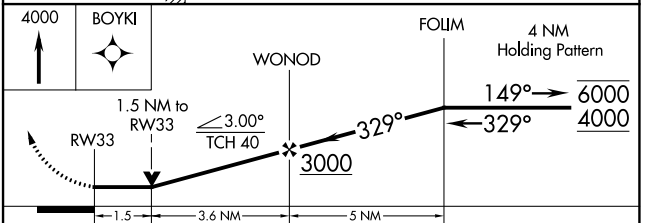
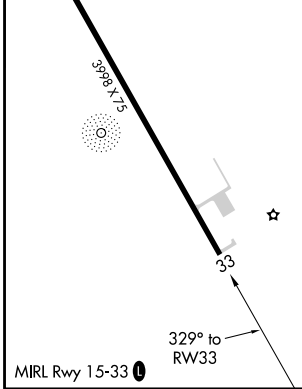
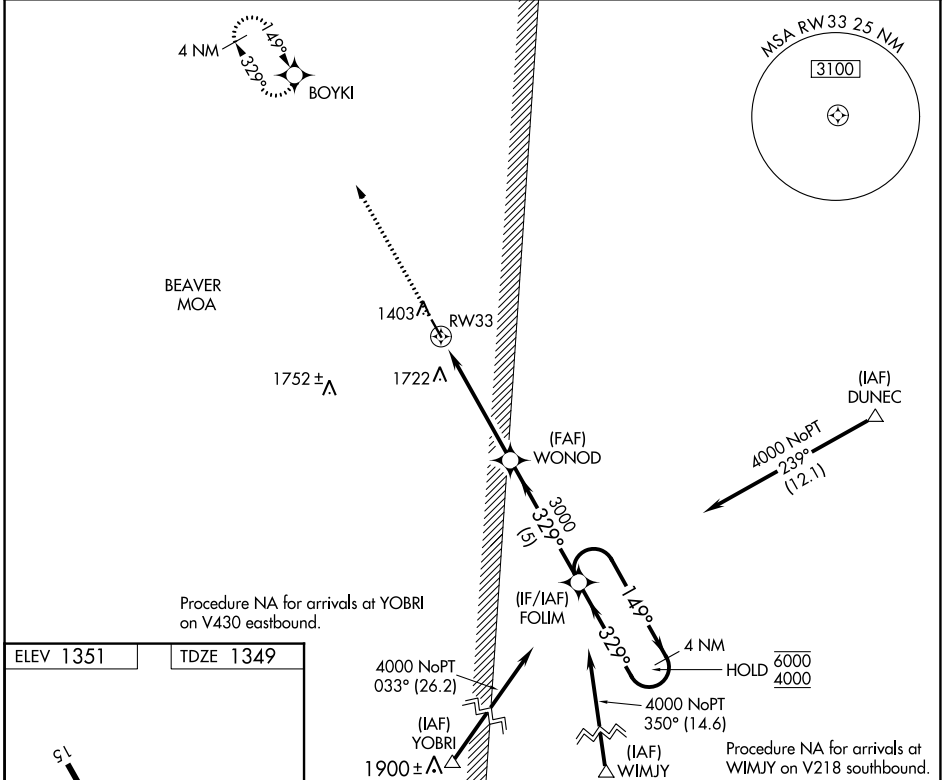
WAAS CH 40226 W33A	APP CRS 329°	Rwy Idg TDZE Apt Elev	3998 1349 1351
--	------------------------	-----------------------------	---

RNAV (GPS) RWY 33

BIGFORK MUNI (F'0Z)

RNP APCH. ▼ ▲ Rwy 33 helicopter visibility reduction below 3/4 SM NA.	MISSED APPROACH: Climb to 4000 direct BOYKI and hold, continue climb-in-hold to 4000.
---	---

AWOS-3PT 118.025	MINNEAPOLIS CENTER 127.9 281.45	CTAF 122.9 0
----------------------------	---	------------------------



CATEGORY	A	B	C	D
LP MDA	1860-1	511 (600-1)		NA
LNAV MDA	1860-1	511 (600-1)		NA
CIRCLING	1860-1 509 (600-1)	2040-1 689 (700-1)		NA

NC-1, 22 FEB 2024 to 21 MAR 2024

NC-1, 22 FEB 2024 to 21 MAR 2024