

(CHACO1.CHACO) 17229

CHACO ONE DEPARTURE

AL-493 (FAA)

FOUR CORNERS RGNL (F'MN)
FARMINGTON, NEW MEXICO

ATIS
127.15
GND CON
121.7
FARMINGTON TOWER
118.9 (CTAF) 257.8
DENVER CENTER
118.575 348.7
UNICOM
122.95

RATTLESNAKE
115.3 RSK
Chan 100

CHACO
N36°26.97'
W108°16.99'

V421

10000
192°
(65)

NOTE: This SID requires a minimum climb of 290' per NM to 6500' for Rwy 23 departure.

GALLUP
115.1 GUP
Chan 98
N35°28.56'-W108°52.36'
L-8, H-4

NOTE: DME required.
NOTE: Chart not to scale.

SW-1, 11 AUG 2022 to 08 SEP 2022

SW-1, 11 AUG 2022 to 08 SEP 2022

DEPARTURE ROUTE DESCRIPTION

Aircraft departing Runways 23 or 25 turn left heading 130° to intercept RSK R-192 to CHACO. Thence via (assigned route).

GALLUP TRANSITION (CHACO1.GUP): From over CHACO via RSK R-192 and GUP R-012 to GUP VORTAC.

CHACO ONE DEPARTURE

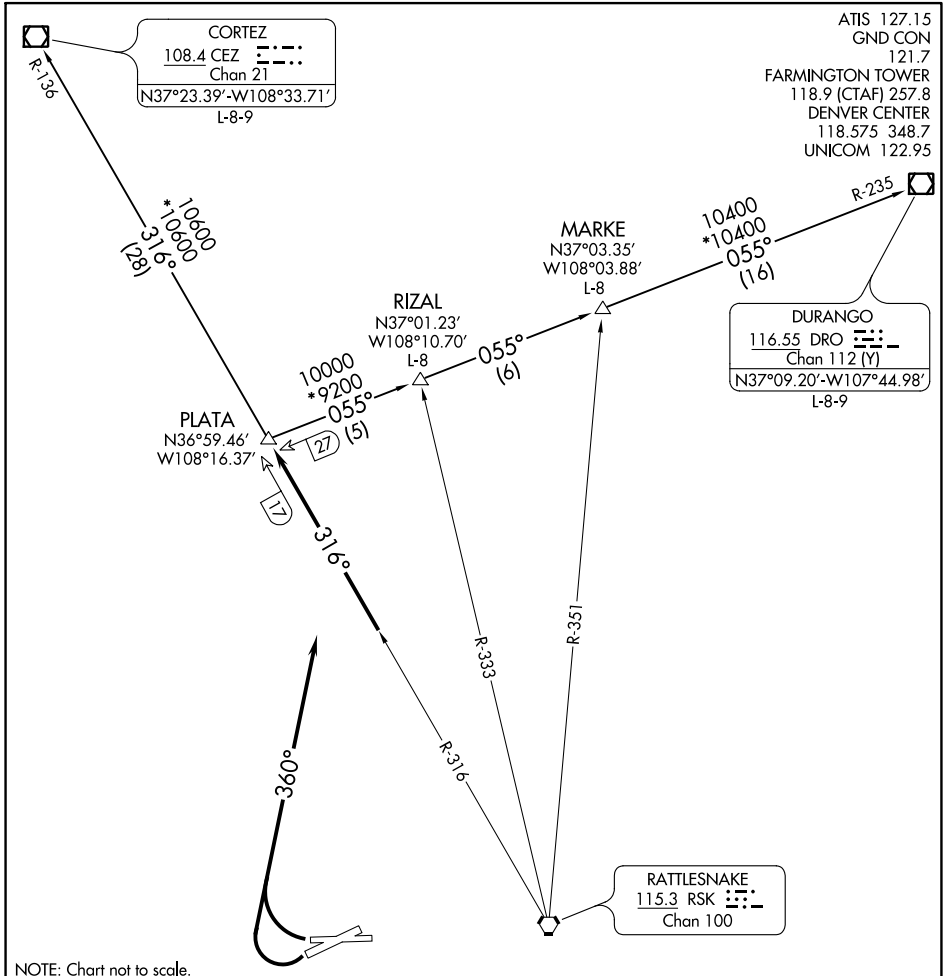
(CHACO1.CHACO) 05DEC96

FARMINGTON, NEW MEXICO
FOUR CORNERS RGNL (F'MN)

(PLATA1.PLATA) 2111Z
PLATA ONE DEPARTURE

AL-493 (FAA)

FOUR CORNERS RGNL (F'MN)
 FARMINGTON, NEW MEXICO



SW-1, 11 AUG 2022 to 08 SEP 2022

SW-1, 11 AUG 2022 to 08 SEP 2022

DEPARTURE ROUTE DESCRIPTION

Aircraft departure Runways 23 and 25 turn right heading 360° to intercept RSK R-316 to PLATA INT. Thence via (transition) or (assigned route).

CORTEZ TRANSITION (PLATA1.CEZ): From over PLATA INT via RSK R-316 and CEZ R-136 to CEZ VOR/DME.

DURANGO TRANSITION (PLATA1.DRO): From over PLATA INT via DRO R-235 to DRO VOR/DME.

MARKE TRANSITION (PLATA1.MARKE): From over PLATA INT via DRO R-235 to MARKE INT.

RIZAL TRANSITION (PLATA1.RIZAL): From over PLATA INT via DRO R-235 to RIZAL INT.

PLATA ONE DEPARTURE
 (PLATA1.PLATA) 05DEC96

FARMINGTON, NEW MEXICO
 FOUR CORNERS RGNL (F'MN)