

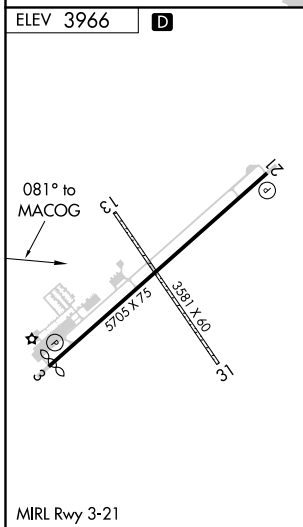
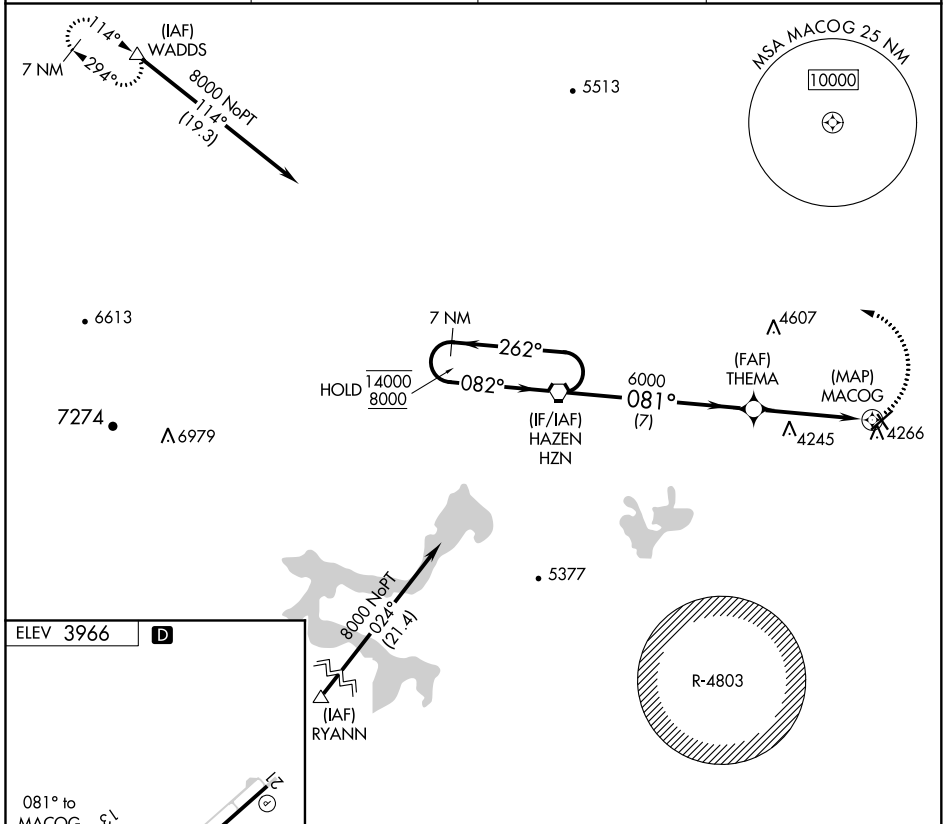
APP CRS 081°	Rwy Idg TDZE Apt Elev	N/A N/A 3966
------------------------	-----------------------------	---

RNAV (GPS)-C

FALLON MUNI (FLX)

RNP APCH. ▼ Circling NA to Rwys 13 and 31. Circling to Rwy 21 NA at night. When local altimeter not received, use Fallon NAS altimeter setting.	MISSED APPROACH: Climbing left turn to 10100 direct WADDS and hold, continue climb-in-hold 10100.
--	---

AWOS-AV 118.25	NFL ATIS * 370.925	NAVY FALLON APP CON * 120.85 360.2	UNICOM 122.8 (CTAF)
--------------------------	------------------------------	--	-------------------------------



7 NM Holding Pattern	HZN VORTAC	THEMATA	MACOG	10100 WADDS
14000 ← 262°	8000 → 082°	6000 * 081°		
7 NM		4.3 NM		
CATEGORY	A	B	C	D
C CIRCLING	4620-1	654 (700-1)	4620-1 ³ / ₄ 654 (700-1 ³ / ₄)	4620-2 654 (700-2)

SW-4, 07 OCT 2021 to 04 NOV 2021

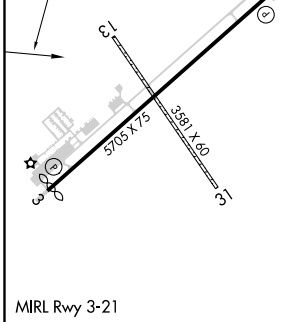
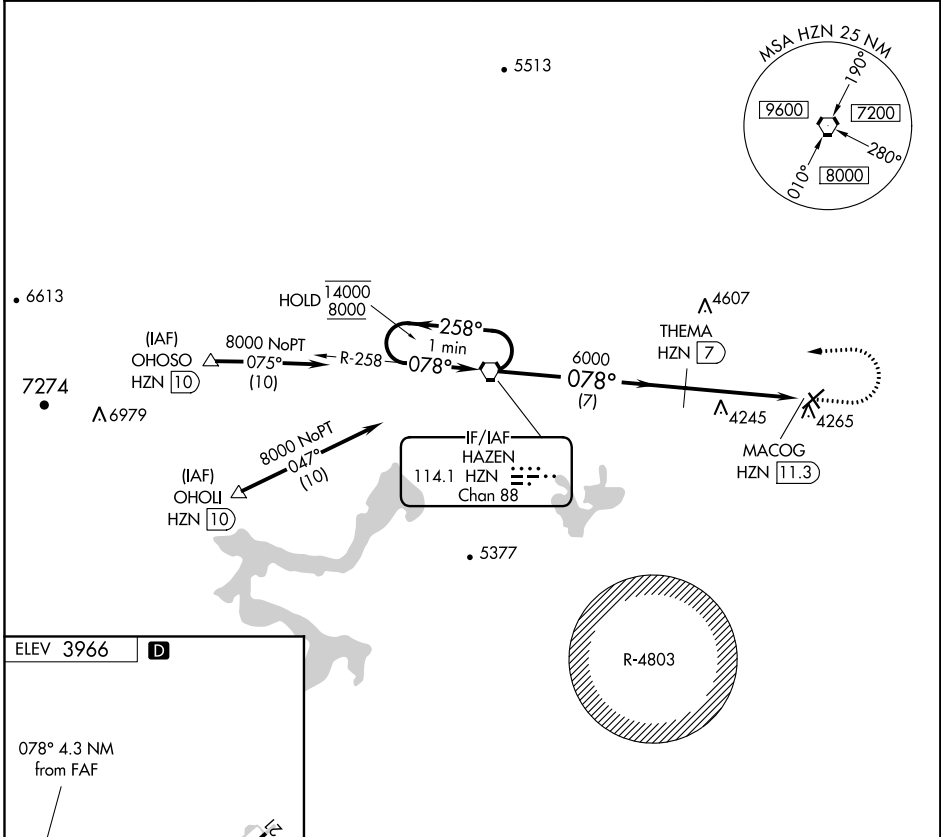
SW-4, 07 OCT 2021 to 04 NOV 2021

VORTAC HZN 114.1 Chan 88	APP CRS 078°	Rwy Idg TDZE Apt Elev N/A N/A 3966
--	------------------------	--

VOR-B
FALLON MUNI (F'LX)

DME required.	MISSED APPROACH: Climb to 6100 then climbing left turn to 8000 direct HZN VORTAC and hold.
<p>▼ Circling NA to Rwy 13 and 31. Circling to Rwy 21 NA at night. When local altimeter not received, use Fallon NAS altimeter setting.</p>	

AWOS-AV 118.25	NFL ATIS * 370.925	NAVY FALLON APP CON * 120.85 360.2	UNICOM 122.8 (CTAF)
--------------------------	------------------------------	--	-------------------------------



One Minute Holding Pattern	HZN VORTAC		6100	8000	HZN
	<p>14000 ← 258°</p> <p>8000 → 078°</p>		<p>THEMA HZN (7)</p> <p>6000</p>		<p>MACOG HZN (11.3)</p>
	7 NM		4.3 NM		
CATEGORY	A	B	C	D	
C CIRCLING	4620-1	654 (700-1)	4620-1¾ 654 (700-1¾)	4620-2 654 (700-2)	

SW-4, 07 OCT 2021 to 04 NOV 2021

SW-4, 07 OCT 2021 to 04 NOV 2021