

FORT CARSON, COLORADO

RNAV (GPS) RWY 31

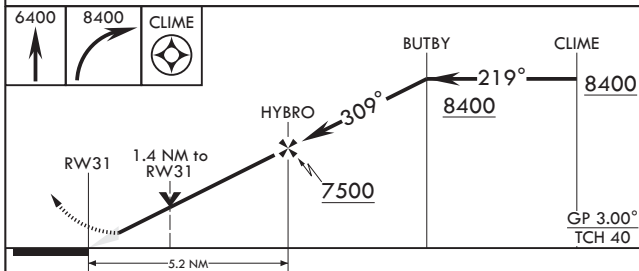
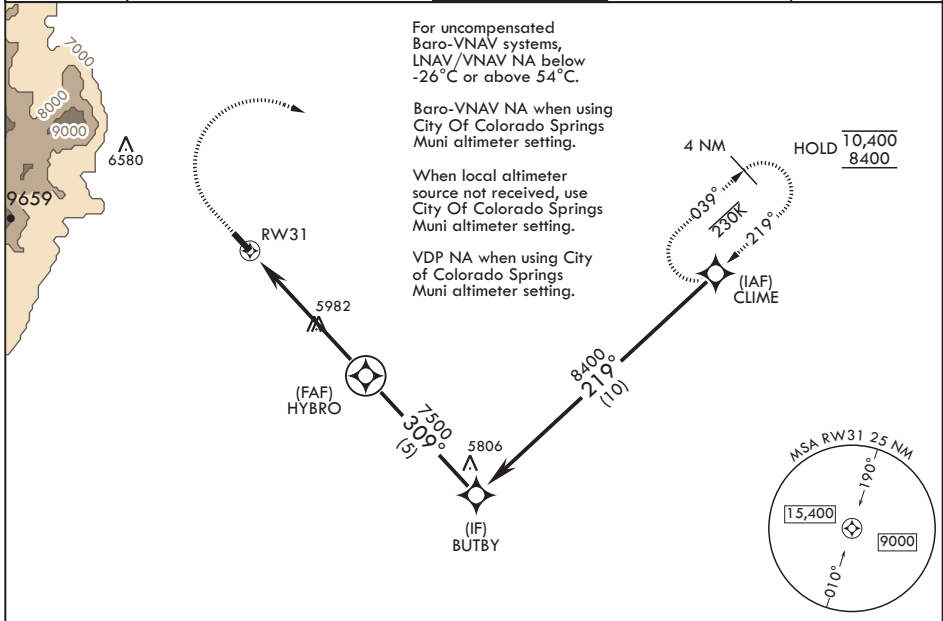
WAAS CH 43949 W31A	APCH CRS 309°	Rwy ldg TDZE Arprt Elev	4500 5826 5874
---------------------------------	-------------------------	-------------------------------	---

-(USA)

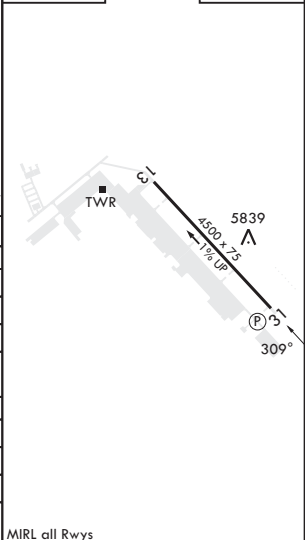
BUTTS AHP (FORT CARSON) (KFCS)

RNP APCH - GPS	MISSED APPROACH: Climb to 6400 then climbing right turn to 8400 direct CLIME and hold.
----------------	--

ATIS 108.8	SPRINGS APP CON/DEP CON 124.0 257.875	TOWER 125.5 229.4	GND CON 118.55 253.6	CLNC DEL 239.3
----------------------	---	-----------------------------	--------------------------------	--------------------------



ELEV 5874	TDZE 5826
-----------	-----------



CATEGORY	A	B	C	D
LPV DA	6026-¾	200	(200-¾)	
LNAV/VNAV DA	6130-⅞	304	(300-⅞)	
LNAV MDA	6280-1	454 (500-1)	6280-1⅝	454 (500-1⅝)
C CIRCLING*	6280-1 406 (500-1)	6400-1 526 (600-1)	6580-2 706 (800-2)	6880-3 1006 (1100-3)
CITY OF COLORADO SPRINGS MUNI ALTIMETER SETTING MINIMUMS				
LPV DA	6089-⅞	263	(300-⅞)	
LNAV/VNAV DA	6193-1	367	(400-1)	
LNAV MDA	6360-1	534 (500-1)	6360-1½	534 (500-1½)
C CIRCLING*	6360-1 486 (500-1)	6480-1 606 (700-1)	6660-2¼ 786 (800-2¼)	6960-3 1086 (1100-3)

MIRL all Rwys

FORT CARSON, COLORADO
Orig 23FEB23

38°41'N - 104°46'W

BUTTS AHP (FORT CARSON) (KFCS)

RNAV (GPS) RWY 31

SW-1, 22 FEB 2024 to 21 MAR 2024

SW-1, 22 FEB 2024 to 21 MAR 2024