

FRESNO, CALIFORNIA

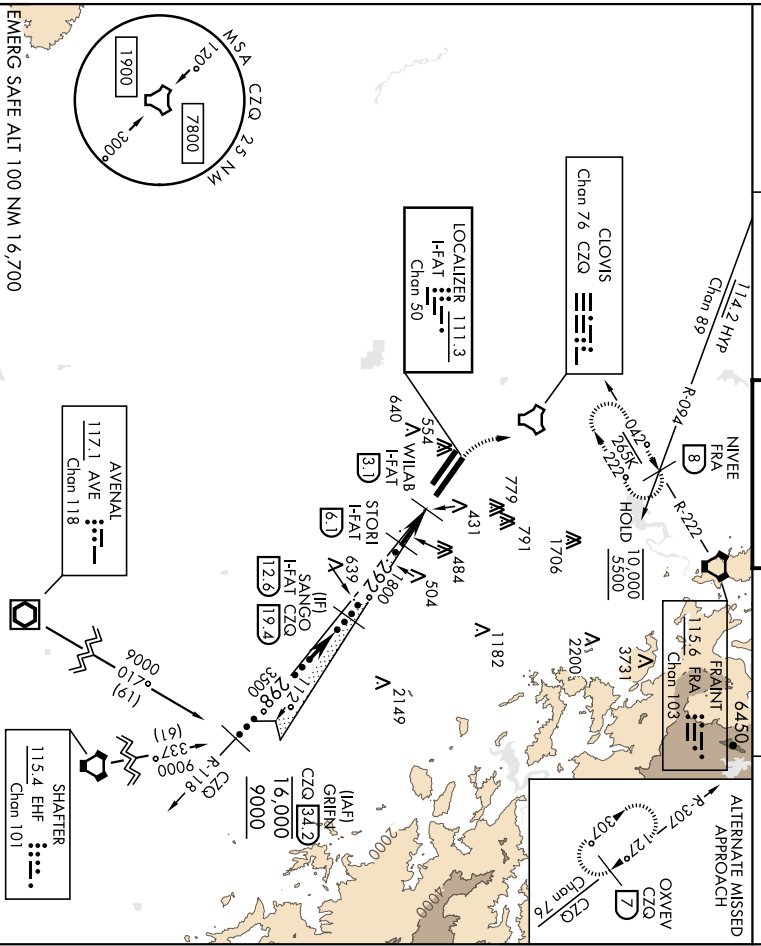
HILLS Z or LOC Z RWY 29R

LOC/DME HFAT	ARCH CRS	Rwy Idg	29R	9227	29L	8008
111.3	292°	TDZE	29R	333	29L	331
Chan 50	Appt Elev			336		

ALIS-2	MISSED APPROACH:	Climb to 800, then finishing right turn to 5500 on heading 330° and FRA WORTAC R-222 to NIVEE Int (FRA 8 DME) and hold, continue climb-in-hold to 5500.
AL-162 [USAF]	FRESNO YOSEMITE INTL (KFAT)	

ALIS	APP CON	TOWER	GND CON	CLNC DEL
121.35 273.6	132.35 323.25	118.2 251.1	121.7 348.6	124.35 348.6

EMERG SAFE ALT 100 NM 16,700	EMERG SAFE ALT 100 NM 16,700
------------------------------	------------------------------



CATEGORY	C	D	E
S-ILS 29R*	533/18	200	(200-1/2)
S-LOC 29R**	700/35	347	(400-3/4)
SIDE STEP RMY 29L	700-1 1/2 369 (400-1 1/2)	700-2 369 (400-2)	1140-2 3/4 804 (900-2 3/4)
GRICLING	920-1 1/2 584 (800-1 1/2)	970-2 584 (800-2)	1140-2 3/4 804 (900-2 3/4)

FRESNO, CALIFORNIA 36°47'N-119°43'W

FRESNO YOSEMITE INTL (KFAT)

Runway 29R: 9227' x 150' (336' x 445')

Runway 29L: 2927' x 150' (331' x 445')

Runway 11L: 11L and 11R

Runway 11R: 29R

Runway 11L: 29R

Runway 11R: 29L

Runway 11L: 29L

Runway 11R: 29R



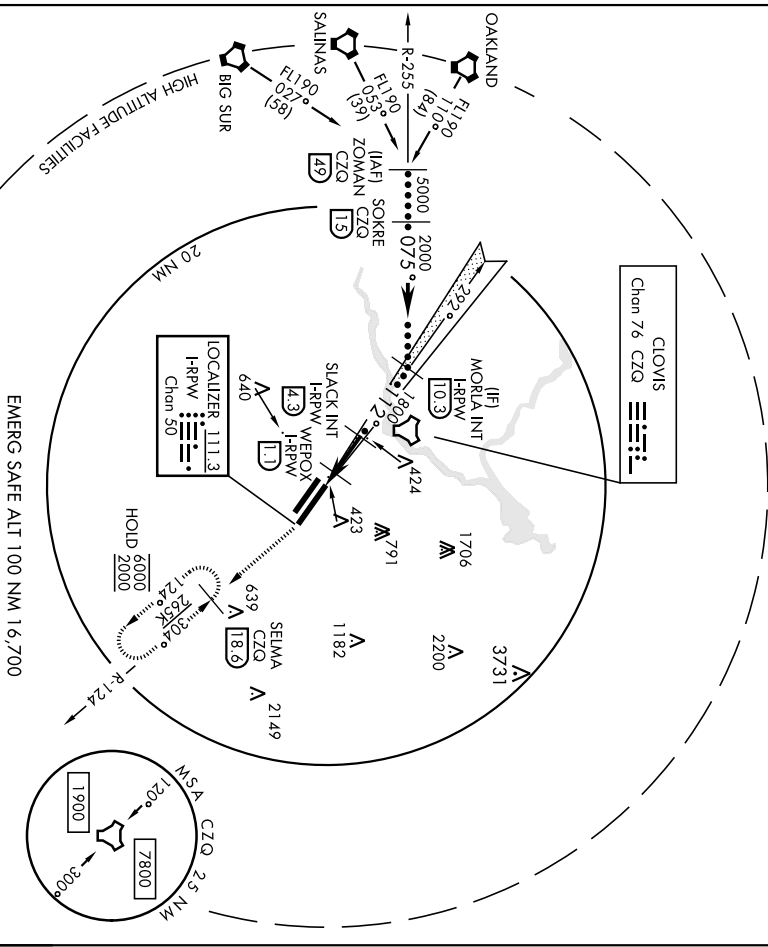
**HI-LOC Z RWY 11L**

AL-16Z [USAF] FRESNO YOSEMITE INTL (KFAT)

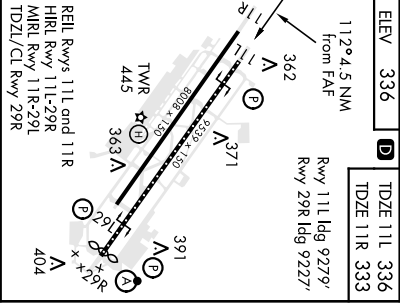
LOC/DME-I-RPW	APCH CRS	Rwy/Ideg	TTL	T1R	T1R	8008
111.3 Chon 50	112°	11L	9279	11R	336	333
DME required		Appl Elev			336	333

MISSED APPROACH: Climb to 2000 on heading 112° and CZQ TACAN R-124 to SELMA 18.6 DME and hold.

AIS	APP CON	TOWER	GND CON	CINCL DEL
121.35 273.6	119.6 351.95	118.2 251.1	121.7 348.6	124.35 348.6



ZOMAN CZQ R-255 [1190]	SOKRE CZQ [15]	MORIA INT H-RPW [103]	SLACK INT I-RPW [43]	WEPGX H-RPW [11]	SELMA CZQ R-124 [186]
5000 07.5°	2000	1800	800	2000 hdg 112°	ELEV 336
3000 TCH 50	2000	1800	800		TDZE 11L 336 TDZE 11R 333
CATEGORY C		CATEGORY D		CATEGORY E	
S-LOC 11L	680/55		314	(1400-14)	
SIDE STEP RWY 11R	680-1½ 347 (400-1½)		680-2	347 (400-2)	
CIRCLING	920-1½ 584 (600-1½)		920-2	584 (1140-2¾) 804 (900-2¾)	
FRESNO, CALIFORNIA 36°47'N-119°43'W					



# HI-TACAN RWY 11L

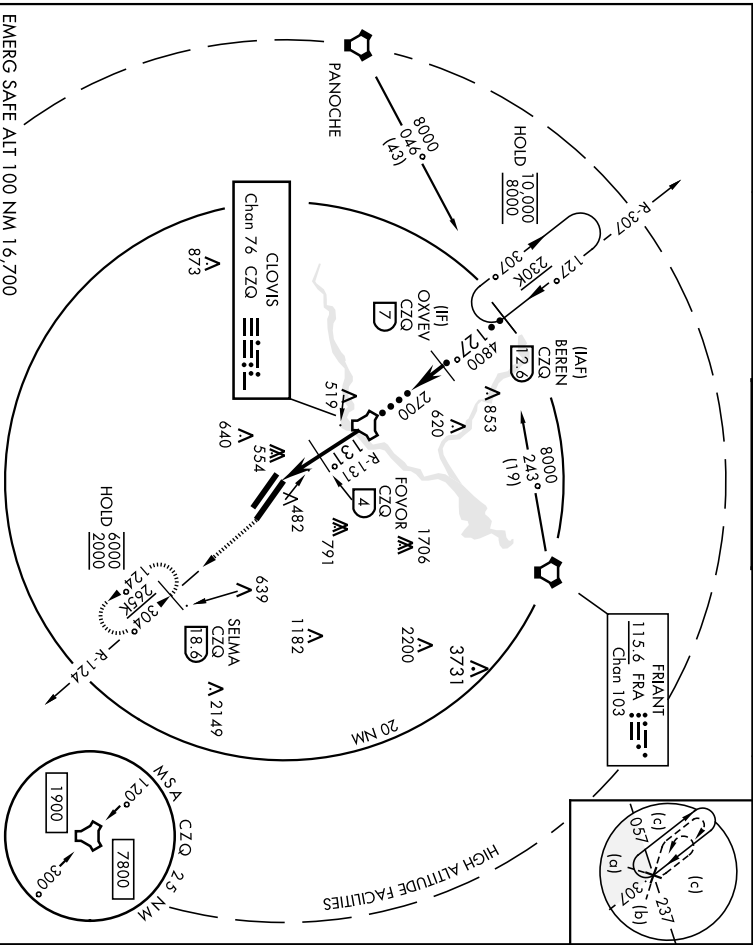
TACAN CZO	APCH CRS	Rwy Idg	11L	9279	11R	8008
Chon 76	131°	TDZE	11L	336	11R	333
		Appl Elev		336		333

AL-162 (USAF) FRESNO YOSEMITE INTL (KFAT)

DME required: **▼**

MISSED APPROACH: Climbing left turn to 2000 on CZO TACAN R-124 to SELMA / 18.6 DME and hold.

ATIS	APP CON	TOWER	GND CON	CLNC DEL
121.35 273.6	119.6 351.95	118.2 251.1	121.7 348.6	124.35 348.6



EMERG SAFE ALT 100 NM, 16,700

BEREN CZO R-307 12.9	OXVEY 7	TACAN FOVOR 4	VGS1 and descent angles not coincident! (WGS1 Angle 3.00/TCH 50)	2000 CZO R-124	SELMA CZO 18.6	ELEV 336 131° 7.3 NM From FAF	D	TDZE 11L 336 TDZE 11R 333
10,000 8000	4800	2700	1420					
3.00° TCH 55								
CATEGORY	C	A NM		D		E		
S-11L	800-1½	464						
SIDESTEP 11R	800-1½ 467 (500-1½)	800-2 467 (500-2)						
CIRCLING	920-1½ 584 (600-1½)	920-2 584 (600-2)						

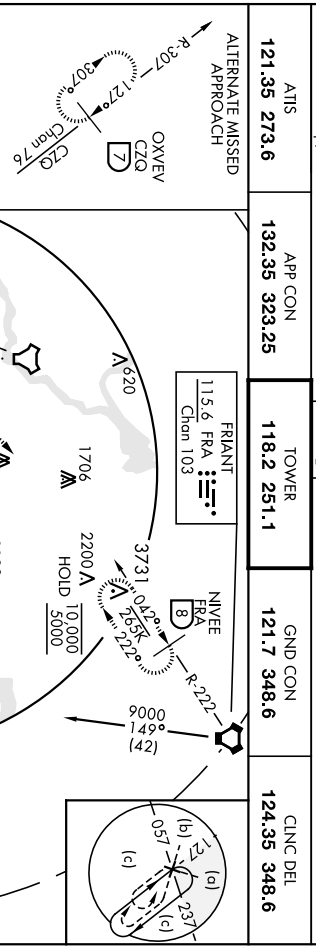
FRESNO, CALIFORNIA 36° 47' N - 119° 43' W

FRESNO YOSEMITE INTL (KFAT)

# HI-TACAN RWY 11L

TACAN CZQ	ARCH CRS	Rwy/ldg	29R	<b>9227</b>	29L	<b>8008</b>
Chon <b>76</b>	<b>307°</b>	TDZE Elev	29R	<b>333</b>	29L	<b>331</b>
DME required.		AISF-2		MISSED APPROACH: Climb to 800 then climbing right turn to 5500 on heading 330° and FRA VORTAC R-222 to NINVE INT/ FRA 8 DME and hold, continue climb-hold to 5500.		AI-162 [USAF]

ATIS	APP CON	TOWER	GND CON	CLNC DEL
<b>121.35 273.6</b>	<b>132.35 323.25</b>	<b>118.2 251.1</b>	<b>121.7 348.6</b>	<b>124.35 348.6</b>



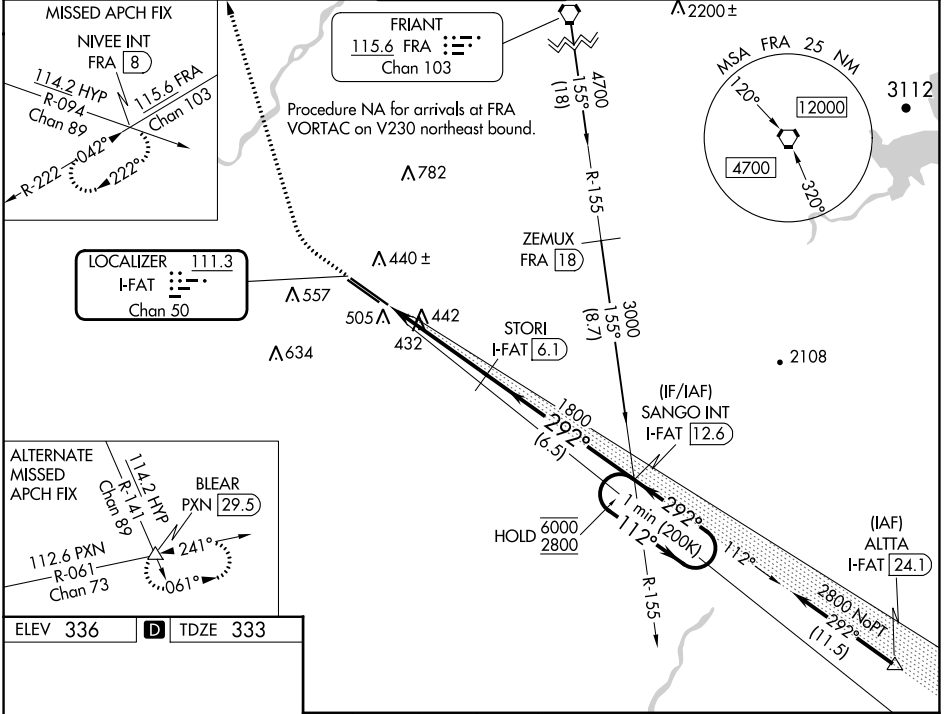
LOC/DME I-FAT <b>111.3</b> Chan <b>50</b>	APP CRS <b>292°</b>	Rwy Idg TDZE Apt Elev	<b>9227</b> <b>333</b> <b>336</b>
---	------------------------	-----------------------------	---

# ILS Y RWY 29R (CAT II & III)

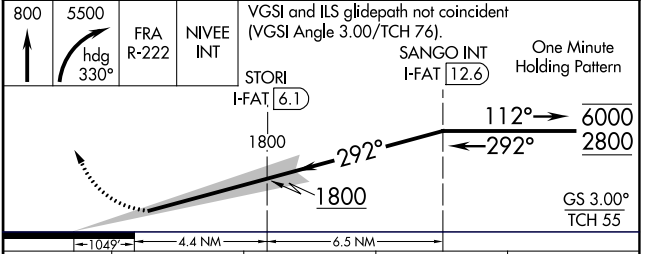
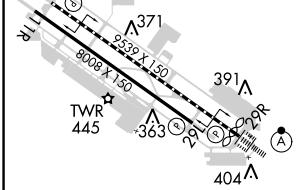
FRESNO YOSEMITE INTL (FAT)

**▼** CAT II: RVR 1000 authorized with specific OPSPEC, MSPEC, or LOA approval and use of autoland or HUD to touchdown. **ALSF-2** (A) MISSED APPROACH: Climb to 800 then climbing right turn to 5500 on heading 330° and FRA VORTAC R-222 to NIVEE INT/FRA 8 DME and hold, continue climb-in-hold to 5500.

ATIS <b>121.35 273.6</b>	FRESNO APP CON <b>119.6 351.95</b>	FRESNO TOWER <b>118.2 251.1</b>	GND CON <b>121.7 348.6</b>	CLNC DEL <b>124.35 348.6</b>
-----------------------------	---------------------------------------	------------------------------------	-------------------------------	---------------------------------



ELEV 336	D	TDZE 333
----------	---	----------



CATEGORY	A	B	C	D
S-ILS 29R	CAT II RA 101/12 100 DA 433			
S-ILS 29R	CAT III RVR 06			

**CATEGORY II & III ILS - SPECIAL AIRCREW & AIRCRAFT CERTIFICATION REQUIRED**

REIL Rwy 11L and 11R  
MIRL Rwy 11L-29R  
MIRL Rwy 11R-29L  
TDZ/CL Rwy 29R

SW-2, 22 FEB 2024 to 21 MAR 2024

SW-2, 22 FEB 2024 to 21 MAR 2024

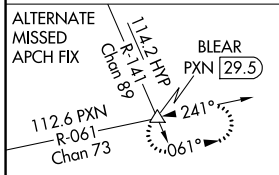
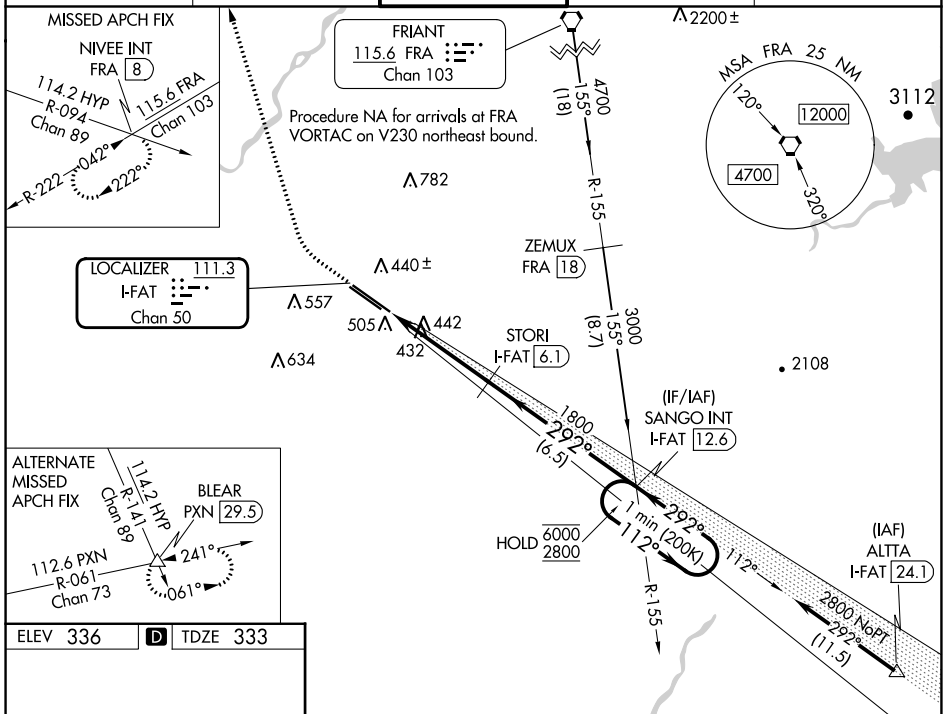
LOC/DME I-FAT <b>111.3</b> Chan <b>50</b>	APP CRS <b>292°</b>	Rwy Idg TDZE Apt Elev	<b>9227</b> <b>333</b> <b>336</b>
---	------------------------	-----------------------------	---

# ILS Y RWY 29R (SA CAT I)

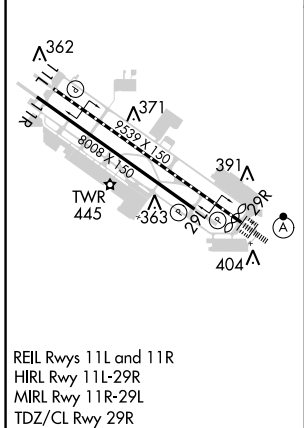
FRESNO YOSEMITE INTL (FAT)

<p>Requires specific OPSPEC, MSPEC, or LOA approval and use of HUD to DH.</p>	ALSF-2 	MISSED APPROACH: Climb to 800 then climbing right turn to 5500 on heading 330° and FRA VORTAC R-222 to NIVEE INT/FRA 8 DME and hold, continue climb-in-hold to 5500.
---	------------	--

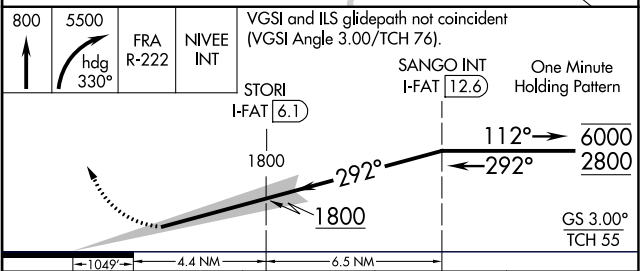
ATIS <b>121.35 273.6</b>	FRESNO APP CON <b>119.6 351.95</b>	FRESNO TOWER <b>118.2 251.1</b>	GND CON <b>121.7 348.6</b>	CLNC DEL <b>124.35 348.6</b>
-----------------------------	---------------------------------------	------------------------------------	-------------------------------	---------------------------------



ELEV 336	<b>D</b>	TDZE 333
----------	----------	----------



FRESNO, CALIFORNIA  
Amdt 39A 24MAR22



CATEGORY	A	B	C	D
S-ILS 29R	RA 151/14 150 DA 483			

**SA CATEGORY I ILS - SPECIAL AIRCREW & AIRCRAFT CERTIFICATION REQUIRED**

FRESNO YOSEMITE INTL (FAT)  
**ILS Y RWY 29R (SA CAT I)**

SW-2, 22 FEB 2024 to 21 MAR 2024

SW-2, 22 FEB 2024 to 21 MAR 2024

LOC/DME I-FAT <b>111.3</b> Chan 50	APP CRS <b>292°</b>	Rwy Idg 29R <b>9227</b> 29L <b>8008</b> TDZE <b>333</b> 331 Apt Elev <b>336</b> 336
--	------------------------	---

# I LS Y or LOC Y RWY 29R

FRESNO YOSEMITE INTL (FAT)

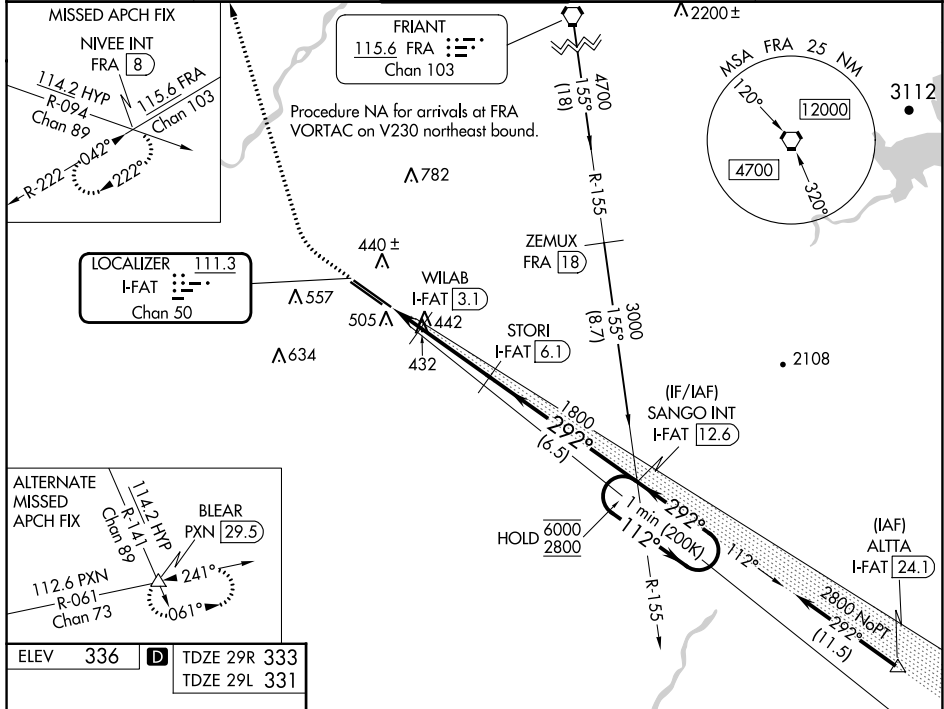
DME required for LOC only.

**▼** For inop ALS, increase S-ILS 29R Cat E visibility to RVR 4000 and S-LOC 29R Cats C, D and E visibility to RVR 5500. Hold in lieu of PT NA for Cat E aircraft.

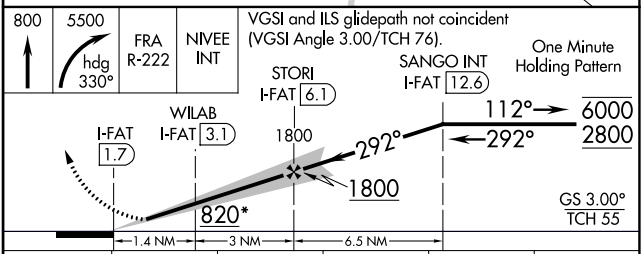
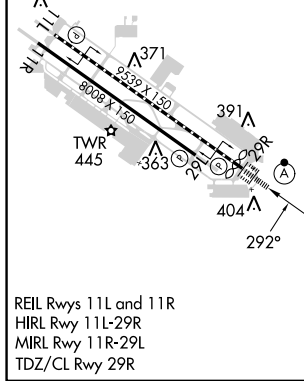
ALS-F-2 Rwy 29R

MISSED APPROACH: Climb to 800 then climbing right turn to 5500 on heading 330° and FRA VORTAC R-222 to NIVEE INT/FRA 8 DME and hold, continue climb-in-hold to 5500.

ATIS <b>121.35 273.6</b>	FRESNO APP CON <b>119.6 351.95</b>	FRESNO TOWER <b>118.2 251.1</b>	GND CON <b>121.7 348.6</b>	CLNC DEL <b>124.35 348.6</b>
-----------------------------	---------------------------------------	------------------------------------	-------------------------------	---------------------------------



ELEV 336	<b>D</b> TDZE 29R 333	TDZE 29L 331
----------	-----------------------	--------------



CATEGORY	A	B	C	D	E
S-ILS 29R	533/18 200 (200-½)				
S-LOC 29R	700/24	367 (400-½)	700/35 367 (400-¾)		
SIDESTEP 29L	700/55	369 (400-1)	700-1½ 369 (400-1½)	700-2	369 (400-2)
<b>C</b> CIRCLING	820-1	484 (500-1)	920-1½ 584 (600-1½)	920-2	1140-2¾ 804 (900-2¾)

SW-2, 22 FEB 2024 to 21 MAR 2024

SW-2, 22 FEB 2024 to 21 MAR 2024

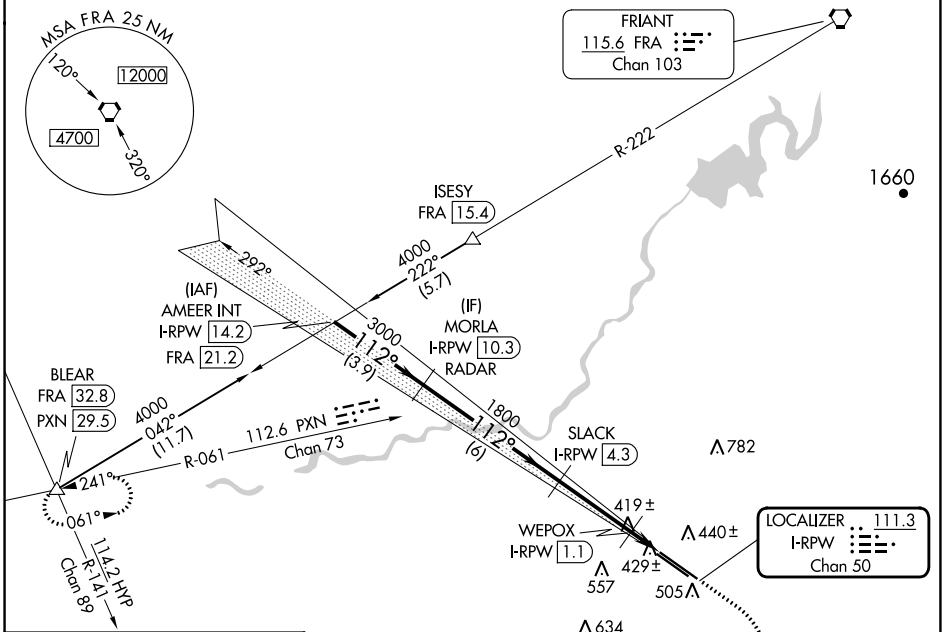
LOC/DME I-RPW <b>111.3</b> Chan 50	APP CRS <b>112°</b>	Rwy Idg <b>9279</b>	11L <b>8008</b>	11R <b>333</b>
		TDZE <b>336</b>	<b>336</b>	<b>336</b>
		Apt Elev <b>336</b>	<b>336</b>	<b>336</b>

# LOC Y RWY 11L

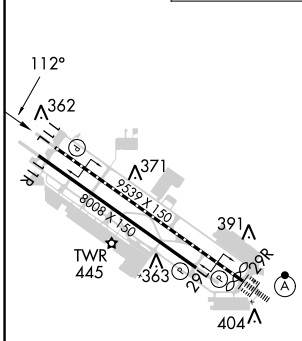
## FRESNO YOSEMITE INTL (FAT)

DME required.	MISSED APPROACH: Climb to 2000 then climbing right turn to 4900 on heading 300° and PXN VORTAC R-061 to BLEAR INT/PXN VORTAC 29.5 DME and hold.			
---------------	---	--	--	--

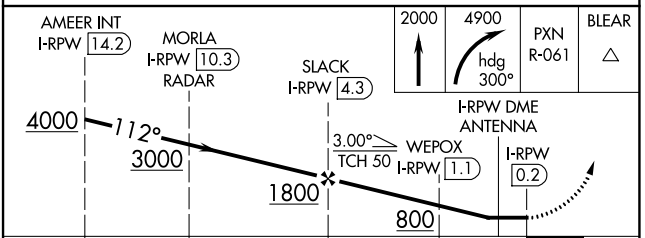
ATIS <b>121.35 273.6</b>	FRESNO APP CON <b>119.6 351.95</b>	FRESNO TOWER <b>118.2 251.1</b>	GND CON <b>121.7 348.6</b>	CLNC DEL <b>124.35 348.6</b>
-----------------------------	---------------------------------------	------------------------------------	-------------------------------	---------------------------------



ELEV 336	<b>D</b>	TDZE 11L 336	TDZE 11R 333
----------	----------	--------------	--------------



REIL Rwy 11L and 11R  
HIRL Rwy 11L-29R  
MIRL Rwy 11R-29L  
TDZ/CL Rwy 29R



CATEGORY	A	B	C	D	E
S-LOC 11L	680/55 344 (400-1)				
SIDESTEP 11R	680-1 347 (400-1)		680-1½ 347 (400-1½)		680-2 347 (400-2)

SW-2, 22 FEB 2024 to 21 MAR 2024

SW-2, 22 FEB 2024 to 21 MAR 2024



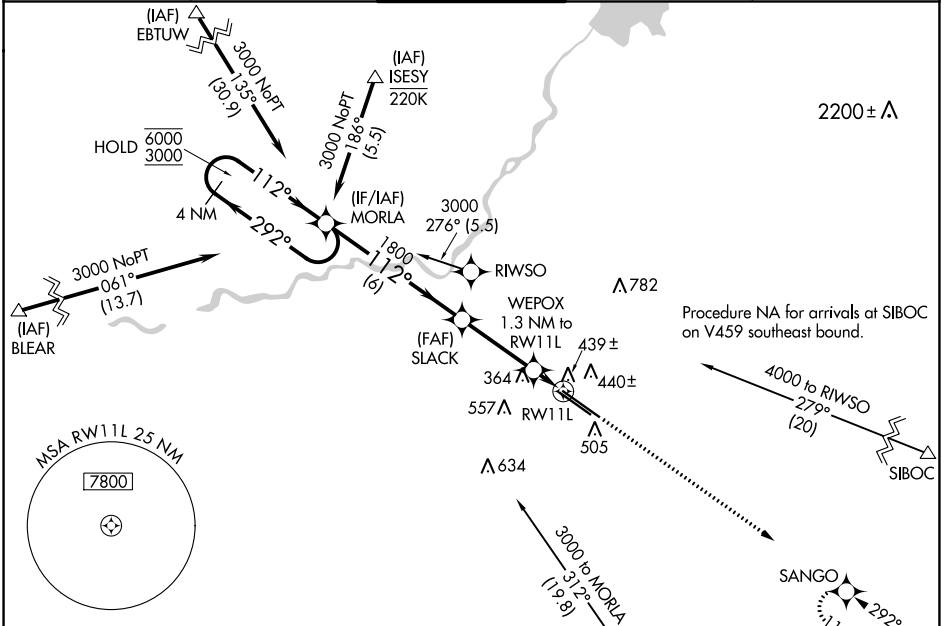
WAAS CH <b>77505</b> W11A	APP CRS <b>112°</b>	Rwy Idg <b>9279</b> TDZE <b>336</b> Apt Elev <b>336</b>
---------------------------------	------------------------	---

# RNAV (GPS) RWY 11L

FRESNO YOSEMITE INTL (FAT)

RNP APCH. ▼ For uncompensated Baro-VNAV systems, LNAV/VNAV NA below -1°C or above 54°C.	MISSED APPROACH: Climb to 2600 direct SANGO and hold.
--	---

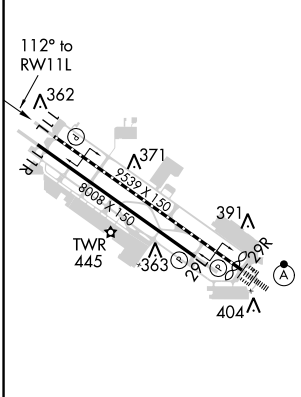
ATIS <b>121.35 273.6</b>	FRESNO APP CON <b>119.6 351.95</b>	FRESNO TOWER <b>118.2 251.1</b>	GND CON <b>121.7 348.6</b>	CLNC DEL <b>124.35 348.6</b>
-----------------------------	---------------------------------------	------------------------------------	-------------------------------	---------------------------------



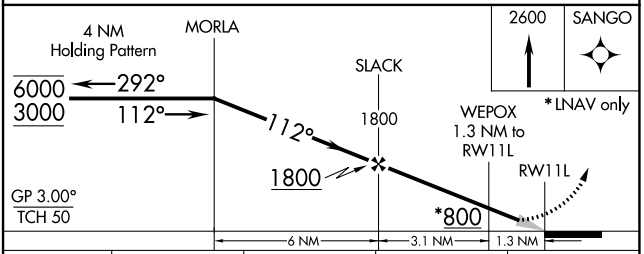
SW-2, 22 FEB 2024 to 21 MAR 2024

SW-2, 22 FEB 2024 to 21 MAR 2024

ELEV 336	<b>D</b>	TDZE 336
----------	----------	----------



REIL Rws 11L and 11R
HIRL Rwy 11L-29R
MIRL Rwy 11R-29L
TDZ/CL Rwy 29R



CATEGORY	A	B	C	D
LPV DA		536/40	200 (200-3/4)	
LNAV/VNAV DA		620/45	284 (300-7/8)	
LNAV MDA		700/55	364 (400-1)	
<b>C</b> CIRCLING	820-1	484 (500-1)	920-1 1/2 584 (600-1 1/2)	920-2 584 (600-2)

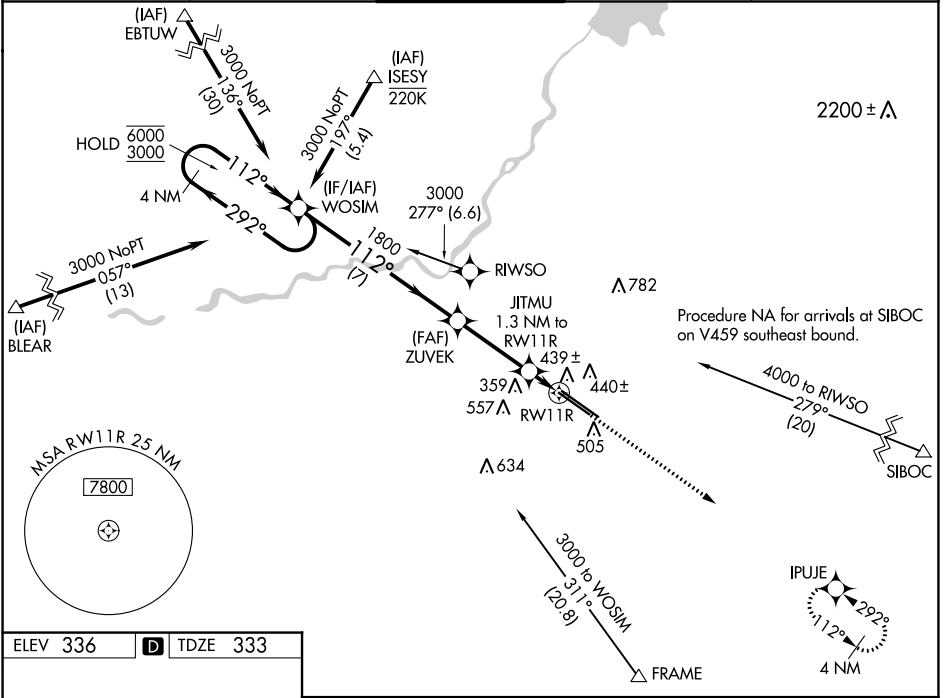
WAAS CH <b>78330</b> W <b>11B</b>	APP CRS <b>112°</b>	Rwy Idg TDZE <b>333</b> Apt Elev <b>336</b>	<b>8008</b>
---	------------------------	---	-------------

# RNAV (GPS) RWY 11R

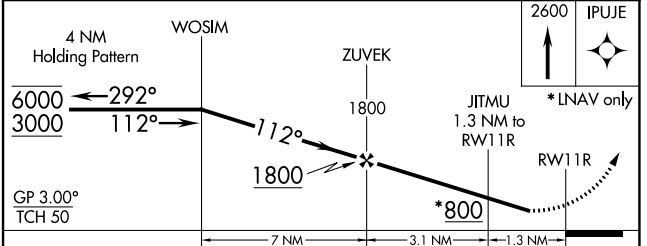
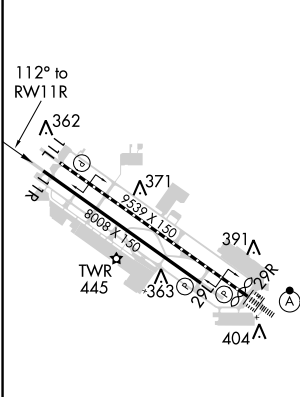
FRESNO YOSEMITE INTL (FAT)

RNP APCH.	MISSED APPROACH: Climb to 2600 direct IPUJE and hold.
▼ Rwy 11R helicopter visibility reduction below 3/4 SM NA. For uncompensated Baro-VNAV systems, LNAV/VNAV NA below -1°C or above 54°C.	

ATIS <b>121.35 273.6</b>	FRESNO APP CON <b>119.6 351.95</b>	FRESNO TOWER <b>118.2 251.1</b>	GND CON <b>121.7 348.6</b>	CLNC DEL <b>124.35 348.6</b>
-----------------------------	---------------------------------------	------------------------------------	-------------------------------	---------------------------------



ELEV 336	<b>D</b>	TDZE 333
----------	----------	----------



CATEGORY	A	B	C	D
LPV DA	584-3/4 251 (300-3/4)			
LNAV/VNAV DA	620-7/8 287 (300-7/8)			
LNAV MDA	700-1 367 (400-1)			
<b>C</b> CIRCLING	820-1 484 (500-1)	920-1 584 (600-1 1/2)	920-2 584 (600-2)	

REIL Rwy 11L and 11R  
HIRL Rwy 11L-29R  
MIRL Rwy 11R-29L  
TDZ/CL Rwy 29R

SW-2, 22 FEB 2024 to 21 MAR 2024

SW-2, 22 FEB 2024 to 21 MAR 2024

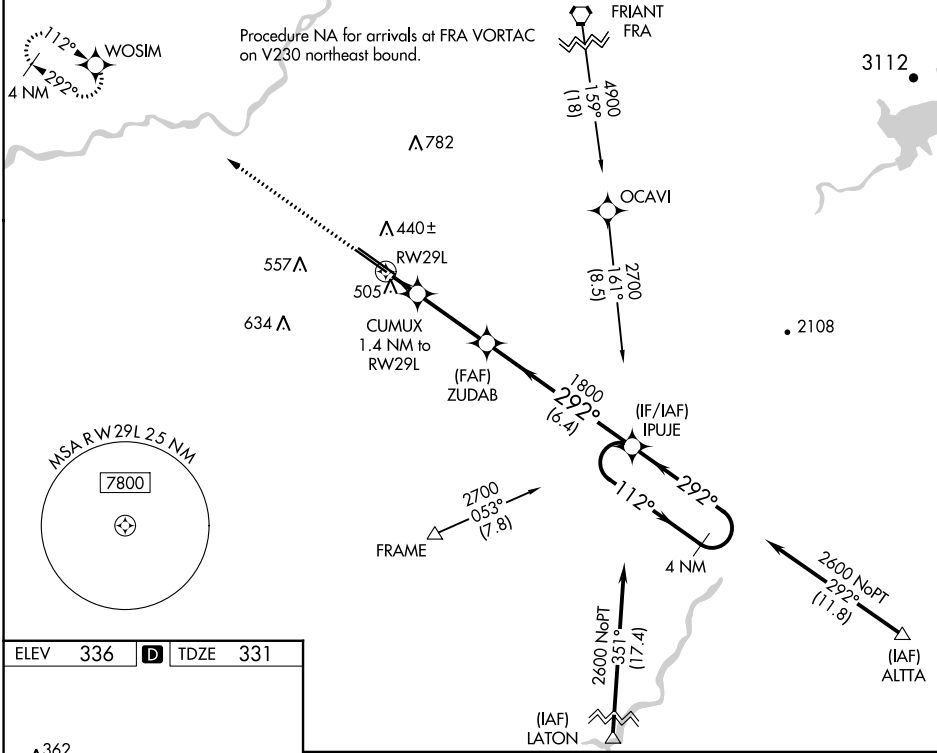
WAAS CH <b>50530</b> <b>W29B</b>	APP CRS <b>292°</b>	Rwy Idg TDZE Apt Elev	<b>8008</b> <b>331</b> <b>336</b>
--	------------------------	-----------------------------	---

# RNAV (GPS) RWY 29L

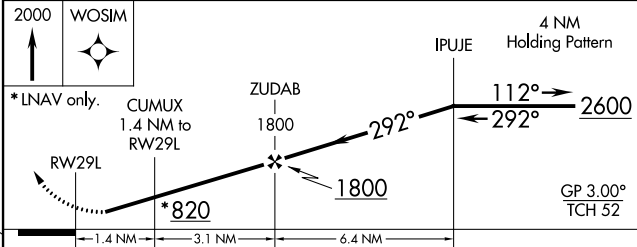
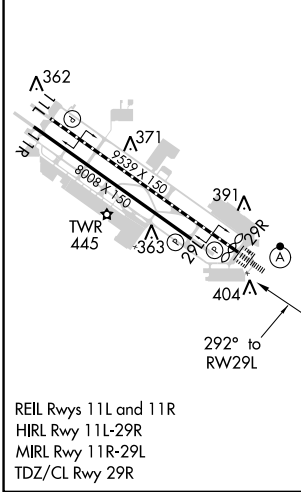
FRESNO YOSEMITE INTL (FAT)

▼ For uncompensated Baro-VNAV systems, LNAV/VNAV NA below 0°C (32°F) or above 54°C (130°F). DME/DME RNP-0.3 NA. Helicopter visibility reduction below ¾ SM NA. MISSED APPROACH: Climb to 2000 direct WOSIM and hold.

ATIS <b>121.35 273.6</b>	FRESNO APP CON <b>119.6 351.95</b>	FRESNO TOWER <b>118.2 251.1</b>	GND CON <b>121.7 348.6</b>	CLNC DEL <b>124.35 348.6</b>
-----------------------------	---------------------------------------	------------------------------------	-------------------------------	---------------------------------



ELEV 336	<b>D</b>	TDZE 331
----------	----------	----------



CATEGORY	A	B	C	D
LPV DA		581-¾	250 (300-¾)	
LNAV/VNAV DA		667-1½	336 (400-1½)	
LNAV MDA	760-1	429 (500-1)	760-1¼	429 (500-1¼)
CIRCLING	820-1	484 (500-1)	920-1½ 584 (600-1½)	920-2 584 (600-2)

SW-2, 22 FEB 2024 to 21 MAR 2024

SW-2, 22 FEB 2024 to 21 MAR 2024

WAAS CH <b>81803</b> W29A	APP CRS <b>292°</b>	Rwy Idg TDZE Apt Elev	<b>9227</b> <b>333</b> <b>336</b>
---------------------------------	------------------------	-----------------------------	---

# RNAV (GPS) RWY 29R

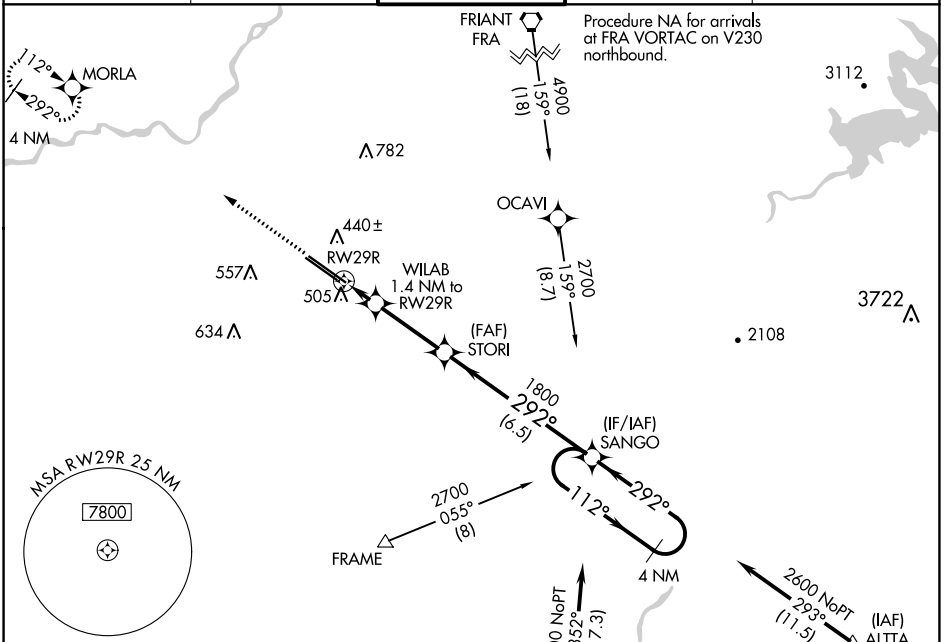
FRESNO YOSEMITE INTL (FAT)

For uncompensated Baro-VNAV systems, LNAV/VNAV NA below 0°C (32°F) or above 54°C (130°F). DME/DME RNP-0.3 NA.

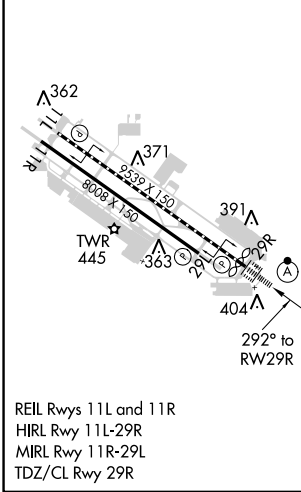
ALSF-2

MISSED APPROACH: Climb to 2000 direct MORLA and hold.

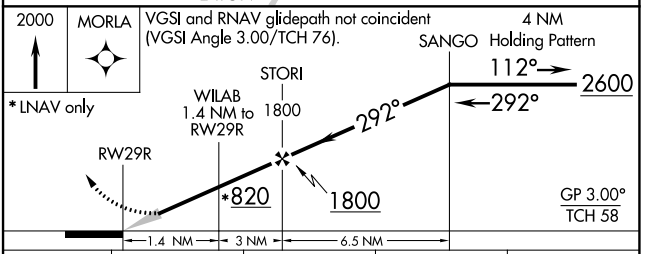
ATIS <b>121.35 273.6</b>	FRESNO APP CON <b>119.6 351.95</b>	FRESNO TOWER <b>118.2 251.1</b>	GND CON <b>121.7 348.6</b>	CLNC DEL <b>124.35 348.6</b>
-----------------------------	---------------------------------------	------------------------------------	-------------------------------	---------------------------------



ELEV 336	<b>D</b>	TDZE 333
----------	----------	----------



REIL Rwy 11L and 11R  
HIRL Rwy 11L-29R  
MIRL Rwy 11R-29L  
TDZ/CL Rwy 29R



CATEGORY	A	B	C	D
LPV DA		533/18	200 (200-½)	
LNAV/VNAV DA		689/30	356 (400-¾)	
LNAV MDA	760/24	427 (500-½)	760/40	427 (500-¾)
<b>C</b> CIRCLING	820-1	484 (500-1)	920-1½ 584 (600-1½)	920-2 584 (600-2)

SW-2, 22 FEB 2024 to 21 MAR 2024

SW-2, 22 FEB 2024 to 21 MAR 2024

TACAN CZQ Chan <b>76</b> (112.9)	APP CRS <b>131°</b>	Rwy Idg TDZE Aprt Elev	11L <b>9279</b> <b>336</b> <b>336</b>	11R <b>8008</b> <b>333</b> <b>336</b>
--	------------------------	------------------------------	--	--

# TACAN RWY 11L

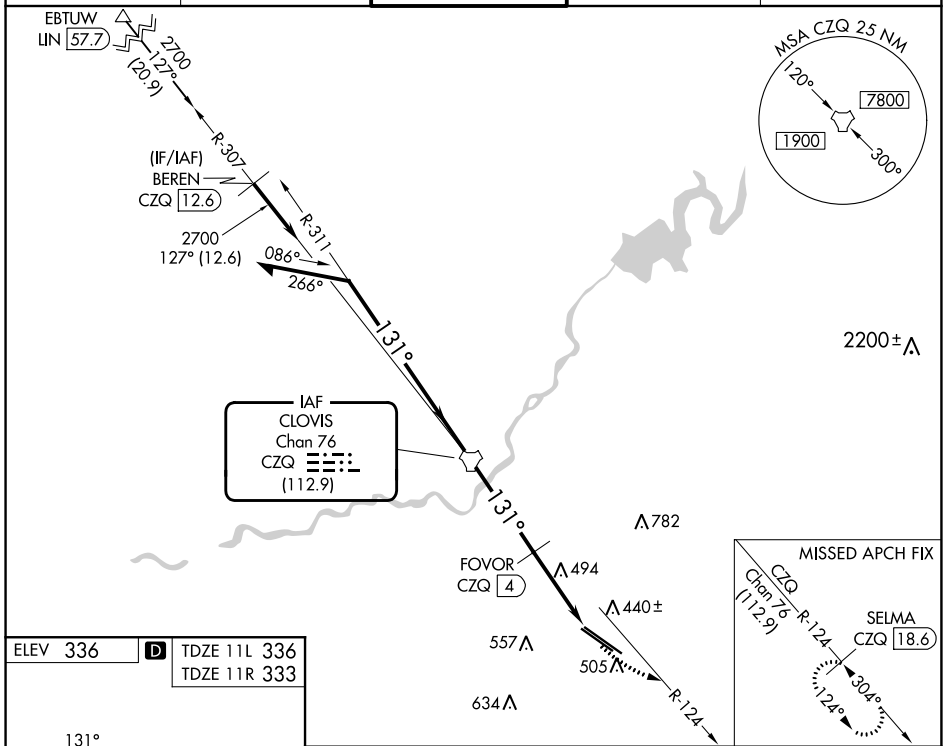
FRESNO YOSEMITE INTL (FAT)

DME required.

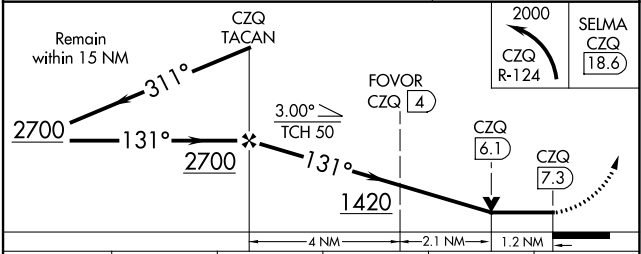
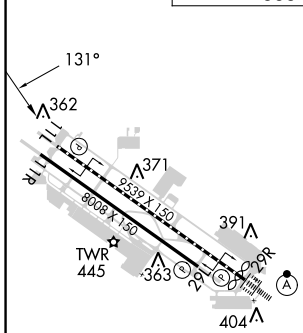
⚠ MISSED APPROACH: Climbing left turn to 2000 on CZQ TACAN R-124 to SELMA/CZQ 18.6 DME and hold.

⚠ Rwy 11L helicopter visibility reduction below 3/4 SM NA.

ATIS <b>121.35 273.6</b>	FRESNO APP CON <b>119.6 351.95</b>	FRESNO TOWER <b>118.2 251.1</b>	GND CON <b>121.7 348.6</b>	CLNC DEL <b>124.35 348.6</b>
-----------------------------	---------------------------------------	------------------------------------	-------------------------------	---------------------------------



ELEV 336	D TDZE 11L 336	TDZE 11R 333
----------	----------------	--------------



CATEGORY	A	B	C	D	E
S-11L	760/55	424 (500-1)	760-1¼ 424 (500-1¼)		
SIDESTEP 11R	760-1	427 (500-1)	760-1½ 427 (500-1½)	760-2 427 (500-2)	
CIRCLING	820-1	484 (500-1)	920-1½ 584 (600-1½)	920-2 584 (600-2)	1140-2¾ 804 (900-2¾)

SW-2, 22 FEB 2024 to 21 MAR 2024

SW-2, 22 FEB 2024 to 21 MAR 2024

TACAN CZQ Chan <b>76</b> <b>(112.9)</b>	APP CRS <b>307°</b>	Rwy Idg TDZE Apt Elev	29R <b>9227</b> <b>333</b> <b>336</b>	29L <b>8008</b> <b>331</b> <b>336</b>
---	------------------------	-----------------------------	--	--

# TACAN RWY 29R

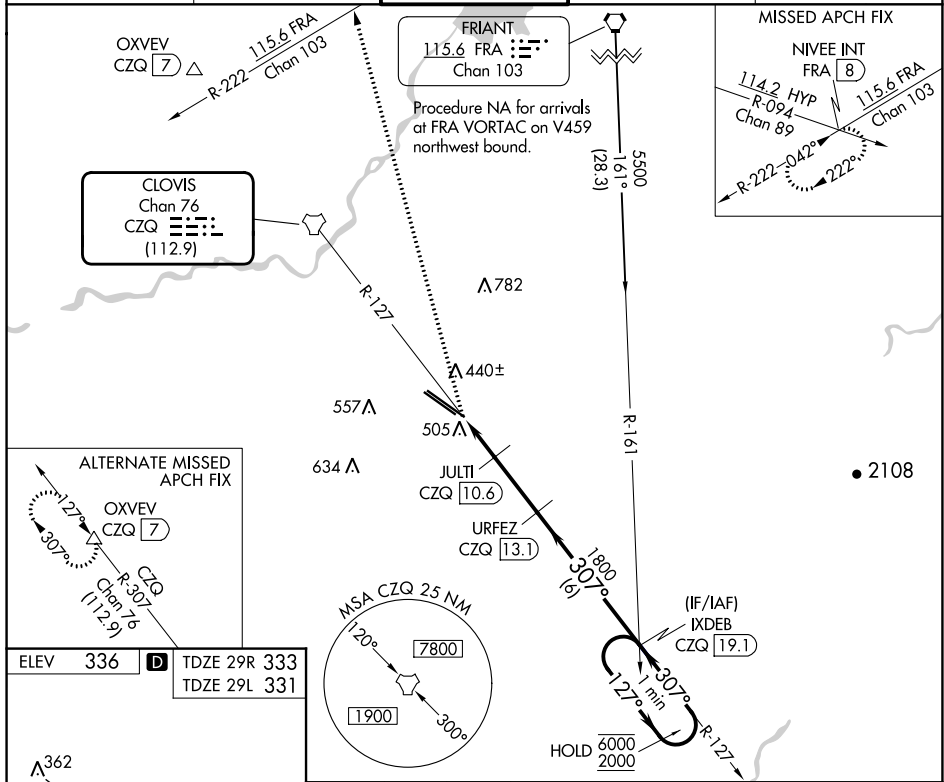
FRESNO YOSEMITE INTL (FAT)

**▼** Rwy 29R helicopter visibility reduction below RVR 4000 NA.  
**▲** For inop ALS, increase S-29R Cat A/B visibility to RVR 5500 and Cat E visibility to 1 1/4 mile.

ALSF-2 Rwy 29R

MISSED APPROACH: Climb to 5500 on heading 330° and FRA VORTAC R-222 to NIVEE INT/FRA 8 DME and hold, continue climb-in-hold to 5500.

ATIS <b>121.35 273.6</b>	FRESNO APP CON <b>119.6 351.95</b>	FRESNO TOWER <b>118.2 251.1</b>	GND CON <b>121.7 348.6</b>	CLNC DEL <b>124.35 348.6</b>
-----------------------------	---------------------------------------	------------------------------------	-------------------------------	---------------------------------



SW-2, 22 FEB 2024 to 21 MAR 2024

SW-2, 22 FEB 2024 to 21 MAR 2024

