

18088

AIRPORT DIAGRAM

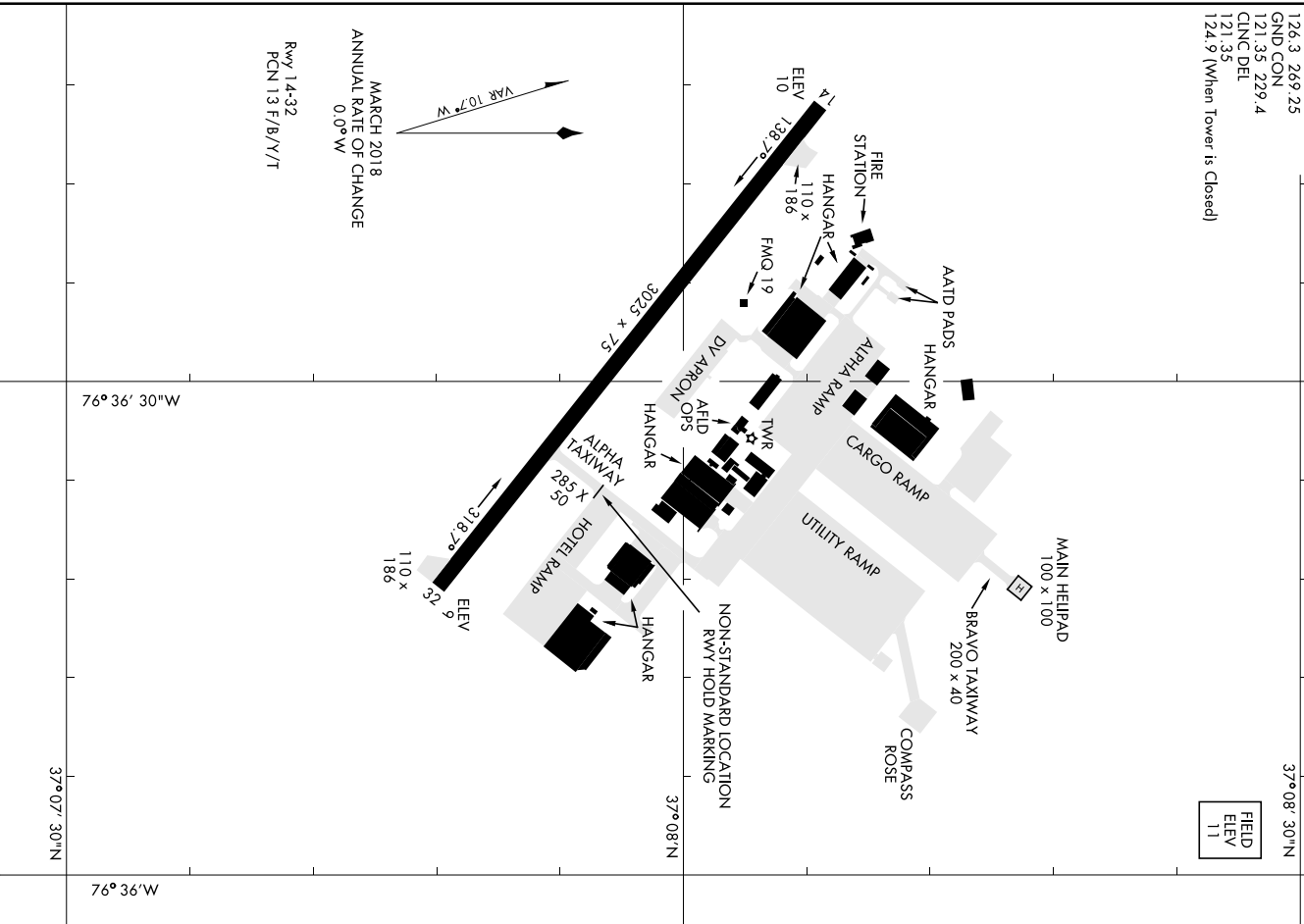
AFD-5211 [USA]

FEIKER AAF (KFAF)
FORT EUSTIS, VIRGINIA

FEIKER TOWER ★
 126.3 269.25
 GND CON 1
 121.35 229.4
 CLNC DEL
 121.35
 124.9 (When Tower is Closed)

37°08' 30"N

FIELD ELEV 11



MARCH 2018
 ANNUAL RATE OF CHANGE
 0.0° W

Rwy 14-32
 PCN 13 F/B/Y/T

76°36' 30"W

37°08'N

37°07' 30"N

76°36'W

NE-3, 22 FEB 2024 to 21 MAR 2024

NE-3, 22 FEB 2024 to 21 MAR 2024

AIRPORT DIAGRAM

FORT EUSTIS, VIRGINIA
FEIKER AAF (KFAF)

FORT EUSTIS, VIRGINIA

COPTER RNAV (GPS) RWY 14

[USA]

FEKER AAF (KEAF)

ARCH CRS	Rwy Idg	3025
139°	TDZE	11
	Appr Elev	11

RNP APCH - GPS

When local altimeter setting not received, use Newport News/Williamsburg Intl altimeter setting.
 VDP NA when using Newport News/Williamsburg Intl altimeter setting.
 Procedure NA at right.

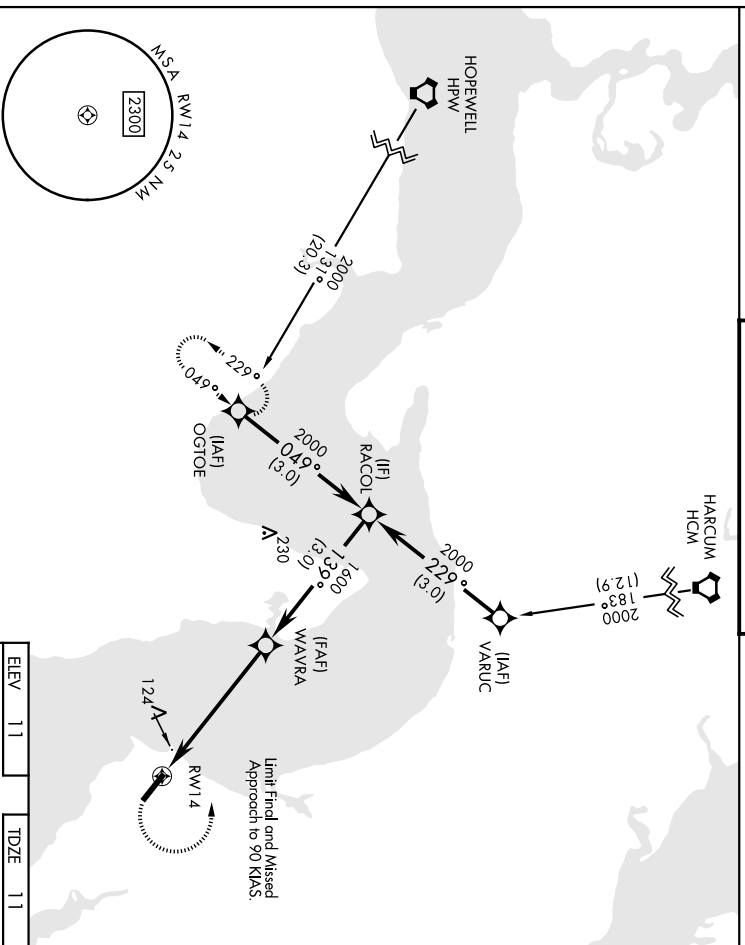


MISSED APPROACH: Climbing left turn to 2000 direct OGTDE and hold.

NORFOLK APP CON
125.7 335.625

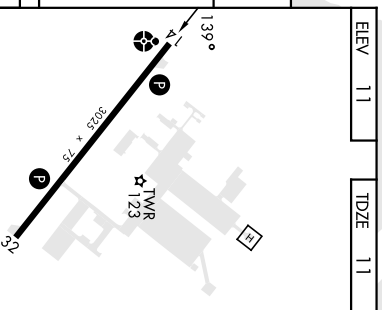
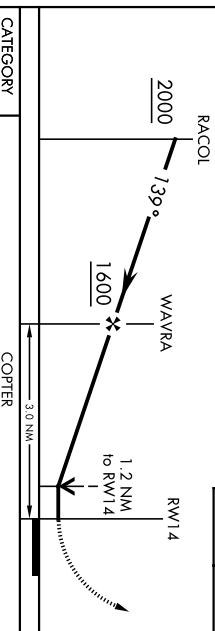
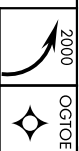
FEKER TOWER ★
126.3 (CTAF) 269.25

GND CON
121.35 229.4



NOT FOR CIVIL USE

VGSI and Descent Angles not coincident!
 (VGSI Angle 3.00/TCR 48).



CATEGORY	COPTER	
LNAY MDA	420-3%	409 (500-3%)
LNAY MDA	NEWPORT NEWS/WILLIAMSBURG INTL ALTIMETER	429 (500-3%)

FORT EUSTIS, VIRGINIA

37°08'N-76°37'W

FEKER AAF (KEAF)

Arr'd 1 30NOV23

COPTER RNAV (GPS) RWY 14

FORT EUSTIS, VIRGINIA

RNAV (GPS) RWY 14

[USA]

FELKER AAF (KEAF)

APCH CRS	Rwy Idg	3025
139°	TDZE	11
	Appt Elev	11

ODALS

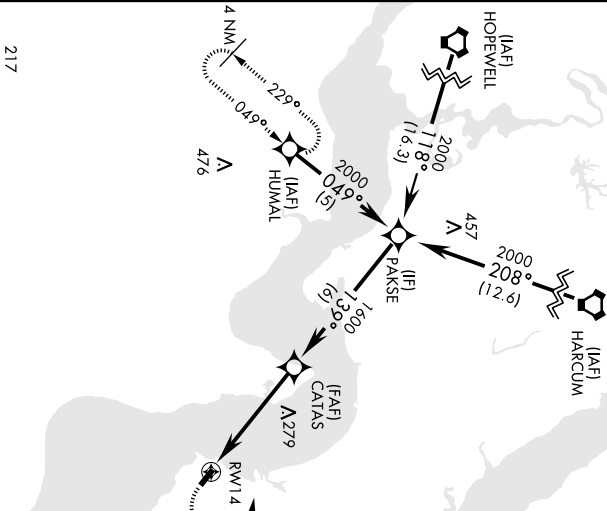
MISSED APPROACH: Climbing left turn to 2000 direct HUMAL and hold.

Procedure NA at night.
When local altimeter setting not received, use Newport News/Williamsburg Intl altimeter setting. Rwy 14 helicopter visibility reduction below 1 SM NA.

NORFOLK APP CON
125.7 335.625

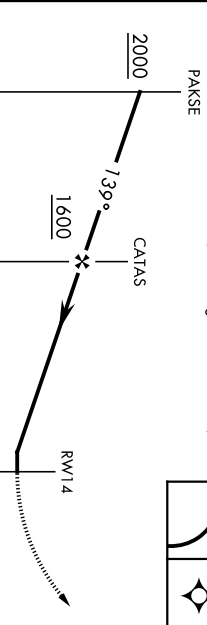
TOWER *
126.3 (CTAF) 269.25

GND CON
121.35 229.4



NOT FOR CIVIL USE

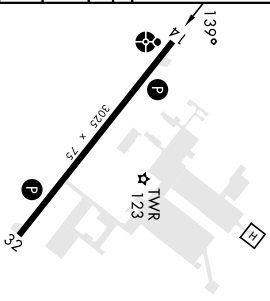
VGSI and Descent Angle not coincident
(VGSI Angle 3.00/TCH 48)



ELEV	11	TDZE	11
------	----	------	----



CATEGORY	A		B		C		D	
	UNAV MDA	480-1	468	(500-1)	NA	NA	NA	NA
CIRCLING	UNAV MDA	480-1	468	(500-1)	560-1	548	(600-1)	NA
	NEWPORT NEWS/WILLIAMSBURG INTL ALTIMETER	500-1	488	(500-1)	NA	NA	NA	NA
CIRCLING	UNAV MDA	500-1	488	(500-1)	NA	NA	NA	NA
CIRCLING	UNAV MDA	500-1	488	(500-1)	580-1	568	(600-1)	NA



HIRL Rwy 14-32

FORT EUSTIS, VIRGINIA 37°08'N-76°37'W

FELKER AAF (KEAF)

Amdt 3 30NOV23

RNAV (GPS) RWY 14

INSTRUMENT APPROACH PROCEDURE CHARTS

A IFR ALTERNATE AIRPORT MINIMUMS

Pilots must review the IFR Alternate Minimums Notes to determine alternate airport suitability.

ANA designation on the approach chart means that pilots may not use that approach as an alternate due to unmonitored facility, absence of weather reporting service, or lack of adequate navigation coverage. Approaches with the **A**NA designation are not listed in this section. **A** designation on the approach chart indicates that the approach procedure has non-standard minimums (for aircraft other than helicopters) or restrictions (for all users) for its use as an alternate.

Alternate Minima (ref: 14 CFR 91.169)

	Precision Approach	Non-Precision Approach
Standard	600-2	800-2
A Non-Standard or restrictions	As indicated below	As indicated below
Helicopters	For the selected approach: Ceiling: 200' above published ceiling Visibility: the greater of 1 SM visibility or the published visibility	
US Military (USA/USN/USAF)	See Service Regulations	

Note: For alternate airport flight planning purposes, precision approach operations include: ILS, PAR, and GLS, and Non-Precision approach operations include: NDB, VOR, LOC, TACAN, LDA, SDF, ASR, RNAV (GPS) and RNAV (RNP).

NAME ALTERNATE MINIMUMS

ABINGDON, VA

VIRGINIA HIGHLANDS (VJI).....**LOC Rwy 24**¹²
RNAV (GPS) Rwy 6¹³
RNAV (GPS) Rwy 24³

- ¹NA when local weather not available.
- ²Categories A, B, 900-2, Category C, 900-2½, Category D, 1000-3.
- ³Category C, 800-2½, Category D, 1000-3.

BALTIMORE, MD

BALTIMORE-WASHINGTON INTL THURGOOD MARSHALL (BWI).....**ILS or LOC Rwy 10**¹
ILS or LOC Rwy 15R²
ILS or LOC Rwy 28¹
ILS or LOC Rwy 33L²
RNAV (GPS) Y Rwy 10³
RNAV (GPS) Y Rwy 15R³
RNAV (GPS) Y Rwy 28³
RNAV (GPS) Y Rwy 33L³

- ¹LOC, Category D, 800-2½.
- ²ILS, LOC, Category D, 800-2½.
- ³Category D, 800-2½.

NAME ALTERNATE MINIMUMS

BALTIMORE, MD (CON'T)

MARTIN STATE (MTN).....**ILS or LOC Rwy 33**¹²
LOC Rwy 15¹³
RNAV (GPS) Rwy 15⁴
RNAV (GPS) Rwy 33⁴
VOR or TACAN Rwy 15⁵

- NA when local weather not available.
- ¹NA when control tower closed.
- ²LOC, Category D, 800-2½.
- ³Categories A, B, 900-2; Category C, 900-2½; Category D, 900-2½.
- ⁴Category D, 800-2½.
- ⁵Categories A, B, 900-2; Category C, 900-2½; Category D, 900-3.

BLACKSBURG, VA

VIRGINIA TECH/MONTGOMERY EXEC (CB).....**RNAV (GPS) Rwy 13**
RNAV (GPS) Rwy 31

- NA when local weather not available.
- Category C, 900-2½.

BROOKNEAL, VA

BROOKNEAL/CAMPBELL COUNTY (0V4).....**RNAV (GPS) Rwy 6**
RNAV (GPS) Rwy 24

- NA when local weather not available.

NAME ALTERNATE MINIMUMS

BUMPASS, VA

LAKE
ANNA (7W4).....RNAV (GPS) Rwy 8
RNAV (GPS) Rwy 26

NA when local weather not available.
Categories A, B, 1100-3.

CAMBRIDGE, MD

CAMBRIDGE-DORCHESTER
RGNL (CGE).....RNAV (GPS) Rwy 34
RNAV (GPS)-A¹

Category D, 800-2½.
¹NA when local weather not available.

CHARLOTTESVILLE, VA

CHARLOTTESVILLE-
ALBEMARLE (CHO).....ILS or LOC Rwy 3²
RNAV (GPS) Rwy 3³
RNAV (GPS) Y Rwy 21³
RNAV (GPS) Z Rwy 21¹

NA when local weather not available.
¹Categories, A, B, C, D, 1000-4.
²ILS, Categories A, B, 700-2; Category C, 900-2½;
Category D, 900-2¾. LOC, Category C, 900-2½;
Category D, 900-2¾.
³Category C, 900-2½; Category D, 900-2¾.

CHASE CITY, VA

CHASE CITY
MUNI (CXE).....RNAV (GPS) Rwy 18¹
RNAV (GPS) Rwy 36²

NA when local weather not available.
¹Categories A, B, 1100-3.
²Categories A, B, 1000-3.

CLARKSVILLE, VA

LAKE COUNTRY
REGIONAL (W63).....RNAV (GPS)-A
RNAV (GPS)-B

NA when local weather not available.

CREWE, VA

CREWE
MUNI (W81).....RNAV (GPS)-A
RNAV (GPS)-B

NA when local weather not available.
Categories A, B, 1000-3.

CULPEPER, VA

CULPEPER RGNL (CJR).....LOC Rwy 4¹
NDB RWY 4¹
RNAV (GPS) Rwy 4²
RNAV (GPS) Rwy 22²
VOR-A²³

¹NA when FBO closed.
²NA when local weather not available.
³Category D, 800-2½.

NAME ALTERNATE MINIMUMS

CUMBERLAND, MD

GREATER CUMBERLAND
RGNL (CBE).....LOC/DME Rwy 23¹⁴
RNAV (GPS) Rwy 5²
RNAV (GPS) Rwy 23³

NA when local weather not available.
¹Category A, 1000-2; Category B, 1400-2;
Category C 1500-3, Category D 1600-3.
²Category A, 1100-2; Category B, 1400-2;
Category C, 1500-3; Category D, 1600-3.
³Category A, 1100-2; Category B, 1400-2;
Category C, 1500-3.
⁴NA when CBE FBO closed.

DANVILLE, VA

DANVILLE RGNL (DAN).....ILS or LOC Rwy 2
RNAV (GPS) Rwy 2
RNAV (GPS) Rwy 20
RNAV (GPS) Rwy 31

NA when local weather not available.

DOVER/CHESWOLD, DE

DELAWARE
AIRPARK (33N).....RNAV (GPS) Rwy 9
RNAV (GPS) Rwy 27
VOR Rwy 27

NA when local weather not available.
Category C, 800-2¼; Category D, 800-2½.

DUBLIN, VA

NEW RIVER
VALLEY (PSK).....RNAV (GPS) Rwy 6
RNAV (GPS) Rwy 24
VOR/DME Rwy 6

NA when local weather not available.
Category D, 800-2¼.

EASTON, MD

EASTON/NEWMAM
FLD (ESN).....ILS or LOC Rwy 4¹
RNAV (GPS) Rwy 4²
RNAV (GPS) Rwy 22²

¹ILS, LOC, NA when control tower closed.
²NA when local weather not available.

FARMVILLE, VA

FARMVILLE
RGNL (FVX).....RNAV (GPS) Rwy 3
RNAV (GPS) Rwy 21

NA when local weather not available.

FELKER AAF (KFAF)

FORT EUSTIS, VA.....RNAV (GPS) Rwy 14
COPTER RNAV (GPS) Rwy 14

NA when control tower closed.

22 FEB 2024 to 21 MAR 2024

22 FEB 2024 to 21 MAR 2024

NAME ALTERNATE MINIMUMS

FORT MEADE (ODENTON), MD

TIPTON (FME).....RNAV (GPS) Rwy 10
RNAV (GPS) Rwy 28

NA when local weather not available.
Category B, 900-2.

FRANKLIN, VA

FRANKLIN
RGNL (FKN).....RNAV (GPS) Rwy 9
RNAV (GPS) Rwy 27

NA when local weather not available.

FREDERICK, MD

FREDERICK
MUNI (FDK).....ILS or LOC Rwy 23¹²³
RNAV (GPS) Rwy 5¹
RNAV (GPS) Y Rwy 23⁴
RNAV (GPS) Z Rwy 23⁵

¹NA when local weather not available.
²NA when tower closed.
³LOC, Category C, 800-2½; Category D, 900-3.
⁴Category D, 800-2½.
⁵Category C, 800-2½; Category D, 900-2¾.

FREDERICKSBURG, VA

SHANNON (EFZ).....RNAV (GPS) Rwy 24
Categories A, B, C, 1100-3
NA when local weather not available.

FRONT ROYAL, VA

FRONT ROYAL-WARREN
COUNTY (FRR).....RNAV (GPS)-A
NA when local weather not available.
Categories A, B, 1200-2.

GAITHERSBURG, MD

MONTGOMERY COUNTY
AIRPARK (GAI).....RNAV (GPS)-A
RNAV (GPS) Rwy 14
NA when local weather not available.

GALAX/HILLSVILLE, VA

TWIN COUNTY (HLX).....RNAV (GPS) Rwy 1
RNAV (GPS) Rwy 19
NA when local weather not available.
Category D, 800-2½.

GEORGETOWN, DE

DELAWARE
COASTAL (GED).....RNAV (GPS) Rwy 4
RNAV (GPS) Rwy 22
VOR Rwy 22
NA when local weather not available.

NAME ALTERNATE MINIMUMS

HAGERSTOWN, MD

HAGERSTOWN RGNL/RICHARD A
HENSON FLD (HGR).....ILS or LOC Rwy 9¹
ILS or LOC Rwy 27¹
RNAV (GPS) Rwy 9
RNAV (GPS) Rwy 27
VOR Rwy 9

NA when local weather not available.
¹NA when control tower closed.

HOT SPRINGS, VA

INGALLS FLD (HSP).....RNAV (GPS) Rwy 7¹
RNAV (GPS) Rwy 25²

NA when local weather not available.
¹Categories A, B, 1000-2; Category C, 1000-2¾,
Category D, 1000-3.
²Category C, 800-2¾; Category D, 800-2½.

JONESVILLE, VA

LEE COUNTY (OVG).....RNAV (GPS) Rwy 7¹
RNAV (GPS) Rwy 25²

NA when local weather not available.
¹Category C, 1200-3.
²Categories A, B, 900-2; Category C, 1200-3.

KENBRIDGE, VA

LUNENBURG
COUNTY (W31).....RNAV (GPS)-A
RNAV (GPS)-B¹

NA when local weather not available.
¹Categories A, B, 1100-3.

LAWRENCEVILLE, VA

BRUNSWICK COUNTY (LVL).....RNAV (GPS)-A
RNAV (GPS)-B

NA when local weather not available.
Categories A, B, 1100-3.

LEESBURG, VA

LEESBURG
EXEC (JYO).....RNAV (GPS) Rwy 17
NA when local weather not available.
Category D, 1000-3.

LEONARDTOWN, MD

ST MARYS COUNTY
RGNL (2W6).....RNAV (GPS) Rwy 11
Category D, 800-2¾.

LOUISA, VA

LOUISA COUNTY/
FREEMAN FLD (LKU).....RNAV (GPS) Rwy 9
RNAV (GPS) Rwy 27
NA when local weather not available.

22 FEB 2024 to 21 MAR 2024

22 FEB 2024 to 21 MAR 2024

NAME ALTERNATE MINIMUMS

LURAY, VA

LURAY CAVERNS (LUA).....RNAV (GPS) Rwy 4¹
RNAV (GPS) Rwy 22²
VOR/DME-B³

NA when local weather not available.
¹Categories A, B, 1400-2; Category C, 1400-3.
²Categories A, B, 1000-2; Category C, 1000-2½.
³Categories A, B, 1300-2; Category C, 1300-3.

LYNCHBURG, VA

LYNCHBURG RGNL/PRESTON GLENN
FLD (LYH).....ILS or LOC Rwy 4¹
RNAV (GPS) Rwy 4²
RNAV (GPS) Rwy 17³
RNAV (GPS) Rwy 22⁴
RNAV (GPS) Rwy 35³
VOR Rwy 22⁵

¹LOC, Category B, 900-2; Category C, 900-2½,
Category D, 900-2¾.
²Category B, 900-2; Category C, 900-2½;
Category D, 900-2¾.
³Category B, 900-2.
⁴Categories A, B, 1100-2; Categories C, D, 1100-3.
⁵Categories A, B, 900-2; Category C, 900-2½,
Category D, 900-2¾.

MARION/WYTHEVILLE, VA

MOUNTAIN
EMPIRE (MKJ).....RNAV (GPS) Rwy 26
Category C, 1900-3.

MARTINSVILLE, VA

BLUE RIDGE (MTV).....LOC Rwy 31¹
RNAV (GPS) Rwy 13
RNAV (GPS) Rwy 31

Category D, 900-2¾.
NA when local weather not available.
¹NA when MTV FBO closed.

MELFA, VA

ACCOMACK
COUNTY (MFV).....LOC Rwy 3
NA when airport operations closed.

MIDDLETOWN, DE

SUMMIT (EVY).....NDB-A¹
RNAV (GPS) Rwy 17
RNAV (GPS) Y Rwy 35
RNAV (GPS) Z Rwy 35

NA when local weather not available.
¹NA when Wilmington control tower closed.

NEW MARKET, VA

NEW MARKET (8W2).....RNAV (GPS)-A
RNAV (GPS)-B

Categories A, B, 1100-3.
NA when local weather not available.

NAME ALTERNATE MINIMUMS

NEWPORT NEWS, VA

NEWPORT NEWS/WILLIAMSBURG
INTL (PHF).....ILS or LOC Rwy 7¹²³
ILS or LOC Rwy 25³
LOC Rwy 20¹⁴
RNAV (GPS) Rwy 2⁴
RNAV (GPS) Rwy 7⁴
RNAV (GPS) Rwy 20⁴

¹NA when control tower closed.
²NA when local weather not available.
³LOC, Category D, 800-2¾.
⁴Category D, 800-2¾.

NORFOLK, VA

CHESAPEAKE
RGNL (CPK).....ILS or LOC Rwy 5
RNAV (GPS) Rwy 5
RNAV (GPS) Rwy 23

NA when local weather not available.

HAMPTON ROADS

EXEC (PVG).....RNAV (GPS) Rwy 10
Category C, 800-2¾.

NORFOLK

INTL (ORF).....ILS or LOC Rwy 5¹
ILS or LOC Rwy 23¹
RNAV (GPS) Rwy 14²
RNAV (GPS) Rwy 32²
RNAV (GPS) Z Rwy 5²
RNAV (GPS) Z Rwy 23²
VOR Rwy 14²
VOR/DME Rwy 32²

¹LOC, Category D, 900-2¾.
²Category D, 900-2¾.

OAKLAND, MD

GARRETT
COUNTY (2G4).....VOR Rwy 9
NA when local weather not available.

OCEAN CITY, MD

OCEAN CITY
MUNI (OXB).....LOC Rwy 32¹²³
RNAV (GPS) Rwy 2¹
RNAV (GPS) Rwy 14¹
RNAV (GPS) Rwy 32¹
VOR-A⁴

¹NA when local weather not available.
²Category D, 800-2½.
³NA when FBO closed.
⁴Categories A, B, 900-2; Category C, 900-2½;
Category D, 900-2¾.

22 FEB 2024 to 21 MAR 2024

22 FEB 2024 to 21 MAR 2024

NAME ALTERNATE MINIMUMS

ORANGE, VA

ORANGE
COUNTY (OMH).....RNAV (GPS) Rwy 8¹
RNAV (GPS) Rwy 26¹
VOR/DME-A²

NA when local weather not available.

¹Categories A, B, 900-2.

²Categories A, B, 1600-2.

PETERSBURG, VA

TRI CITIES EXEC/DINWIDDIE
COUNTY (PTB).....LOC Rwy 5¹
RNAV (GPS) Rwy 5
RNAV (GPS) Rwy 23
VOR Rwy 23

NA when local weather not available.

¹NA when arpt unattended.

PHILLIPS AAF (KAPG)

ABERDEEN PROVING
GROUND, MD.....RNAV (GPS) Rwy 22
NA when control tower closed.

RICHLANDS, VA

TAZEWELL
COUNTY (JFZ).....LOC/DME Rwy 25
RNAV (GPS) Rwy 7
RNAV (GPS) Rwy 25

NA when local weather not available.

RICHMOND, VA

RICHMOND INTL (RIC).....ILS or LOC Rwy 16
LOC, Categories C, D, 800-2½.

RICHMOND/ASHLAND, VA

HANOVER COUNTY
MUNI (OPF).....LOC Rwy 16¹
RNAV (GPS) Rwy 16
RNAV (GPS) Rwy 34¹
VOR Rwy 16

Category D, 900-2¼.

¹NA when local weather not available.

NAME ALTERNATE MINIMUMS

ROANOKE, VA

ROANOKE/BLACKSBURG RGNL
(WOODRUM FLD) (ROA).....ILS or LOC Rwy 34¹
LDA Y Rwy 6²
RNAV (GPS) Y Rwy 6³
RNAV (GPS) Y Rwy 24⁴
RNAV (GPS) Y Rwy 34⁵
RNAV (RNP) Z Rwy 34⁶
VOR/DME-A⁷

¹ILS, LOC, Categories A, B, 900-2;

Category C, 1300-3; Category D, 1700-3.

²Categories A, B, 1600-2; Category C, 1600-3;

Category D, 1700-3.

³Categories A, B, 900-2; Category C, 1300-3;

Category D, 1700-3.

⁴Categories A, B, 1900-2;

Categories C, D, 1900-3.

⁵Categories A, B, C 1500-5; Category D, 1700-5.

⁶Categories A, B, C, D 1000-4.

⁷Category C, 1300-3; Category D, 1700-3.

SALISBURY, MD

SALISBURY-OCEAN CITY
WICOMICO RGNL (SBY).....ILS or LOC Rwy 32
RNAV (GPS) Rwy 5
RNAV (GPS) Rwy 14
RNAV (GPS) Rwy 23
RNAV (GPS) Rwy 32
VOR Rwy 5

NA when local weather not available.

SOUTH BOSTON, VA

WILLIAM M TUCK (W78).....RNAV (GPS) Rwy 1
VOR-A¹

NA when local weather not available.

¹Category C 800-2¼.

SOUTH HILL, VA

MECKLENBURG-
BRUNSWICK RGNL (AVC).....LOC Rwy 1
NA when AVC FBO closed.

STAFFORD, VA

STAFFORD
RGNL (RMN).....RNAV (GPS) Rwy 33
NA when local weather not available.
Category D, 900-2¼.

**STAUNTON-WAYNESBORO-
HARRISONBURG, VA**

SHENANDOAH VALLEY
RGNL (SHD).....ILS or LOC Rwy 5¹
NDB Rwy 5²
RNAV (GPS) Rwy 5²
RNAV (GPS) Rwy 23²

NA when local weather not available.

¹LOC, Category D, 900-2¼.

²Category D, 900-2¼.

22 FEB 2024 to 21 MAR 2024

22 FEB 2024 to 21 MAR 2024

NAME ALTERNATE MINIMUMS

STEVENSVILLE, MD

BAY BRIDGE (W29).....RNAV (GPS) Rwy 29
NA when local weather not available.

SUFFOLK, VA

SUFFOLK
EXEC (SFQ).....RNAV (GPS) Rwy 7
RNAV (GPS) Rwy 22
RNAV (GPS) Rwy 25
NA when local weather not available.

TAPPAHANNOCK, VA

TAPPAHANNOCK/
ESSEX COUNTY (XSA).....RNAV (GPS) Rwy 10
RNAV (GPS) Rwy 28
NA when local weather not available.

WAKEFIELD, VA

WAKEFIELD
MUNI (AKQ).....RNAV (GPS) Rwy 20
Categories A, B, C, D, 1100-3.

WALLOPS ISLAND, VA

WALLOPS FLIGHT
FACILITY (WAL).....RNAV (GPS) Rwy 4²
RNAV (GPS) Rwy 10²
RNAV (GPS) Rwy 17²
RNAV (GPS) Rwy 22²
RNAV (GPS) Rwy 28²
RNAV (GPS) Rwy 35²
VOR/DME or TACAN Rwy 10¹
VOR or TACAN Rwy 17²

NA when local weather not available.
¹Categories A, B, 900-2; Category C, 900-2½;
Category D, 900-2¾.
²Category D, 900-2¾.

WARRENTON, VA

WARRENTON/
FAUQUIER (HWY).....RNAV (GPS) Rwy 15
RNAV (GPS) Rwy 33
VOR Rwy 15¹

NA when local weather not available.
¹Category D 800-2¼.

WASHINGTON, DC

MANASSAS RGNL/HARRY P DAVIS
FLD (HEF).....ILS or LOC Rwy 16L¹
RNAV (GPS) Rwy 16L²
RNAV (GPS) Rwy 16R²
RNAV (GPS) Rwy 34L²
RNAV (GPS) Rwy 34R²

NA when local weather not available.
¹ILS, Category C, 700-2; Category D, 700-2¼.
LOC, Category D, 800-2¼.
²Category D, 800-2¼.

NAME ALTERNATE MINIMUMS

WASHINGTON, DC (CON'T)

RONALD REAGAN WASHINGTON
NTL (DCA).....ILS or LOC Rwy 1¹
LDA Y Rwy 19²
LDA Z Rwy 19³
RNAV (GPS) Rwy 15⁴

¹LOC, Category B, 900-2; Category C, 900-2¾;
Category D, 900-3.
²LDA, Categories A, B, C, D, 1100-3.
³Category C, 900-2; Category D, 900-3.
⁴Category C, 900-2¾; Category D, 900-3.

WASHINGTON DULLES

INTL (IAD).....ILS or LOC Rwy 1R¹
ILS or LOC Rwy 19L²
ILS or LOC/DME Rwy 1C¹
ILS or LOC/DME Rwy 1L¹
ILS or LOC/DME Rwy 12¹
ILS or LOC/DME Rwy 19C¹
ILS or LOC/DME Rwy 19R¹
RNAV (GPS) Rwy 1L³
RNAV (GPS) Rwy 12³
RNAV (GPS) Rwy 19R³
RNAV (GPS) Y Rwy 1C³
RNAV (GPS) Y Rwy 1R²
RNAV (GPS) Y Rwy 19C³
RNAV (GPS) Y Rwy 19L³
VOR/DME Rwy 12³

¹LOC, Category D, 800-2½.
²ILS, Categories A, B, C, D, 700-2.
³Category D, 800-2½.

WEST POINT, VA

MIDDLE PENINSULA
RGNL (FYJ).....RNAV (GPS)-B
RNAV (GPS) Rwy 10
VOR-A

NA when local weather not available.

WESTMINSTER, MD

CARROLL COUNTY RGNL/JACK B POAGE
FLD (DMW).....RNAV (GPS) Rwy 34
NA when local weather not available.

WILLIAMSBURG, VA

WILLIAMSBURG-
JAMESTOWN (JGG).....RNAV (GPS)-C
VOR-B

NA when local weather not available.
Categories A, B, C, 1100-3.

22 FEB 2024 to 21 MAR 2024

22 FEB 2024 to 21 MAR 2024

23334

NAME ALTERNATE MINIMUMS NAME ALTERNATE MINIMUMS

WILMINGTON, DE

NEW CASTLE (ILG).....ILS or LOC Rwy 1²
RNAV (GPS) Rwy 1³
RNAV (GPS) Rwy 9³
RNAV (GPS) Rwy 19³
RNAV (GPS) Rwy 27³
VOR Rwy 9³
VOR Rwy 27³

NA when local weather not available.

¹NA when control tower closed.

²LOC, Category D, 800-2¼.

³Category D, 800-2¼.

WINCHESTER, VA

WINCHESTER
RGNL (OKV).....RNAV (GPS) Rwy 14¹
RNAV (GPS) Rwy 32
VOR/DME-A

NA when local weather not available.

¹Category D, 800-2½.

WISE, VA

LONESOME
PINE (LNP).....RNAV (GPS) Rwy 6
RNAV (GPS) Rwy 24

NA when local weather not available.

Category D, 900-2¼.

22 FEB 2024 to 21 MAR 2024

22 FEB 2024 to 21 MAR 2024

23334

M7

DRONE TWO ARRIVAL
(DRONE:DRONE2) 24MAY18

(DRONE:DRONE2) 23334
DRONE TWO ARRIVAL

AL-291 (FAA)

NORFOLK, VIRGINIA

ORF ATIS
127.15
NORFOLK APP CON
118.9 353.7



DRONE TURBOJET VERTICAL NAVIGATION PLANNING INFORMATION
Expect clearance to cross at 11000.

DEENE TURBOJET VERTICAL NAVIGATION PLANNING INFORMATION
Expect clearance to cross at FL210.

BROZE TURBOJET VERTICAL NAVIGATION PLANNING INFORMATION
Expect clearance to cross at FL190.

RALEIGH/DURHAM
117.2 RDU
Chan 119

TAR RIVER
117.8 TYI
Chan 125

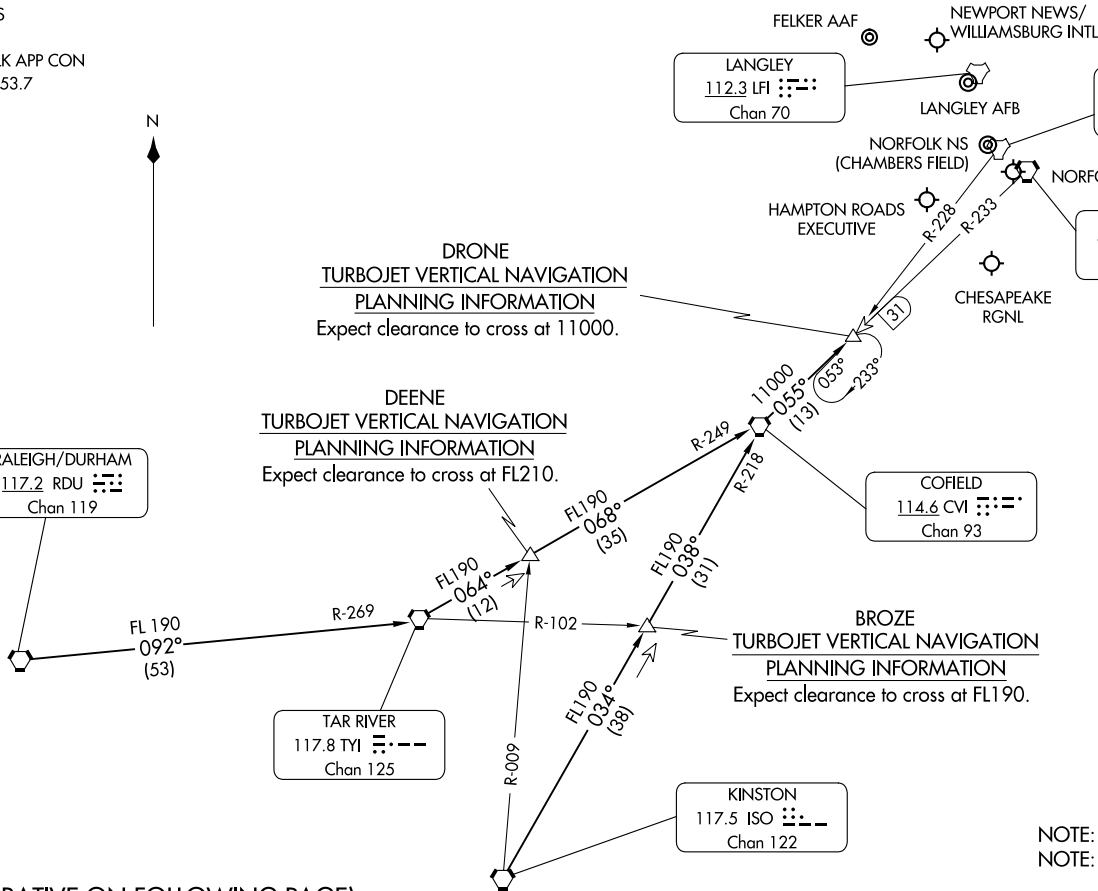
KINSTON
117.5 ISO
Chan 122

COFIELD
114.6 CVI
Chan 93

LANGLEY
112.3 LFI
Chan 70

CHAMBERS
113.95 NGU
Chan 86(Y)

NORFOLK
116.9 ORF
Chan 116



NOTE: RADAR required.
NOTE: DME required.

NOTE: Chart not to scale.

(NARRATIVE ON FOLLOWING PAGE)

NORFOLK, VIRGINIA

ARRIVAL DESCRIPTION

KINSTON TRANSITION (ISO.DRONE2): From over ISO VORTAC on ISO R-034 and CVI R-218 to CVI VORTAC, then on CVI R-055 to DRONE. Thence. . . .

RALEIGH/DURHAM TRANSITION (RDU.DRONE2): From over RDU VORTAC on RDU R-092 and TYI R-269 to TYI VORTAC, then on TYI R-064 and CVI R-249 to CVI VORTAC, then on CVI R-055 to DRONE. Thence. . . .

...from over DRONE expect radar vectors to final approach course.

NE-3, 22 FEB 2024 to 21 MAR 2024

NE-3, 22 FEB 2024 to 21 MAR 2024