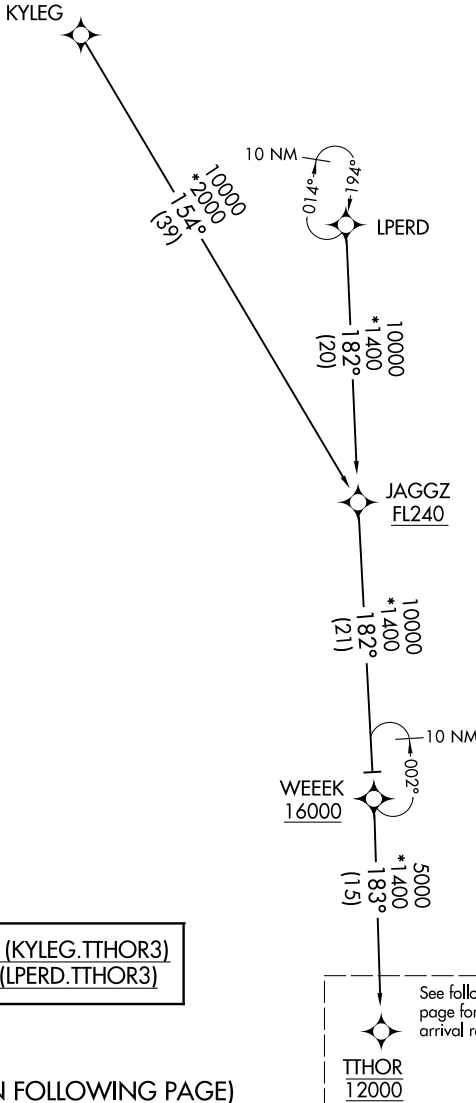


ORLANDO APP CON  
 119.775 351.9  
 DAYTONA APP CON  
 118.85 353.825  
 DAB ATIS  
 132.875  
 EVB ATIS  
 124.625  
 LEE ATIS  
 134.325  
 ORL ATIS  
 127.25  
 OMN ATIS  
 118.475  
 SFB ATIS  
 125.975

RNAV 1 - DME/DME/IRU or GPS.  
 RADAR required.

NOTE: Jet and turboprop aircraft only.



KYLEG TRANSITION (KYLEG.TTHOR3)  
 LPERD TRANSITION (LPERD.TTHOR3)

(CONTINUED ON FOLLOWING PAGE)

NOTE: Chart not to scale.

SE-3, 22 FEB 2024 to 21 MAR 2024

SE-3, 22 FEB 2024 to 21 MAR 2024

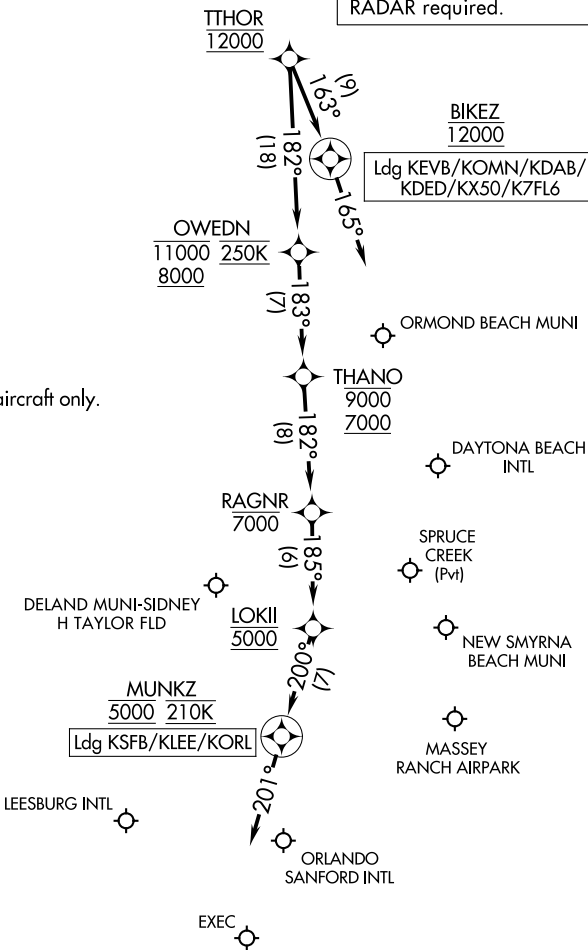
# TTHOR THREE ARRIVAL (RNAV) Arrival Routes

ORLANDO, FLORIDA

ORLANDO APP CON  
119.775 351.9  
DAYTONA APP CON  
118.85 353.825  
DAB ATIS  
132.875  
EVB ATIS  
124.625  
LEE ATIS  
134.325  
ORL ATIS  
127.25  
OMN ATIS  
118.475  
SFB ATIS  
125.975

RNAV 1 - DME/DME/IRU or GPS.  
RADAR required.

NOTE: Jet and turboprop aircraft only.



NOTE: Chart not to scale.

## ARRIVAL ROUTE DESCRIPTION

**LANDING KEVB/KOMN/KDAB/KDED/KX50/K7FL6:** From TTHOR on track 163° to cross BIKEZ at 12000, then on track 165°. Expect RADAR vectors to final approach course.

**LANDING KSF/KLEE/KORL:** From TTHOR on track 182° to cross OWEDN between 8000 and 11000 and at 250K, then on track 183° to cross THANO between 7000 and 9000, then on track 182° to cross RAGNR at or below 7000, then on track 185° to cross LOKII at 5000, then on track 200° to cross MUNKZ at 5000 and at 210K, then on track 201°. Expect RADAR vectors to final approach course.