

LOC/DME I-FGH 109.35 Chan 30 (Y)	APP CRS 041°	Rwy Idg 4775 TDZE 58 Apt Elev 72
--	------------------------	---

ILS or LOC RWY 4

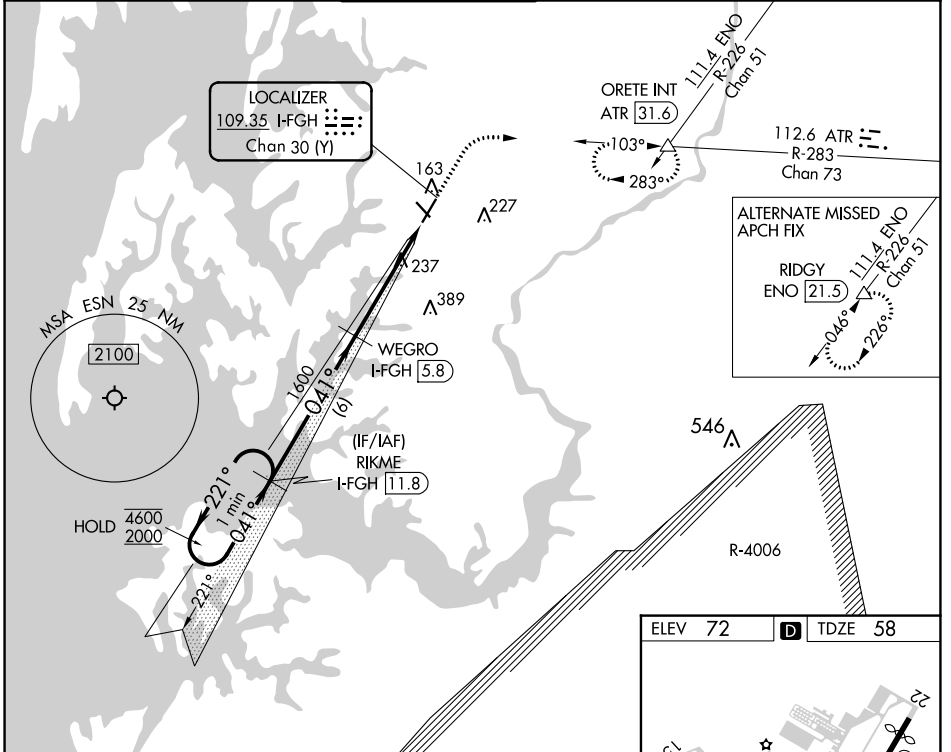
EASTON/NEWNAM FLD (ESN)

RADAR and DME required for procedure entry. DME required for LOC only.

▼ Circling Rwy 15, 33 NA at night. Autopilot coupled approach NA below 1000.

MISSED APPROACH: Climb to 2000 on heading 041° and on ATR VOR/DME R-283 to ORETE INT/ATR 31.6 DME and hold.

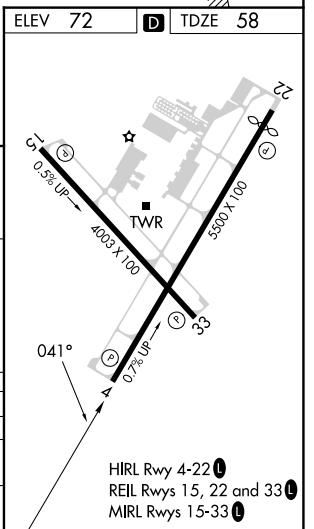
ATIS 124.475	POTOMAC APP CON 133.75 254.35	EASTON TOWER * 118.525 (CTAF) 1	GND CON 119.075	CLNC DEL 119.075
------------------------	---	---	---------------------------	----------------------------



NE-3, 22 FEB 2024 to 21 MAR 2024

NE-3, 22 FEB 2024 to 21 MAR 2024

One Minute Holding Pattern	GS unusable below 600.	2000	ATR R-283	ORETE
4600 ← 221°	RIKME I-FGH (11.8)	↑ hdg 041°		△
2000 → 041°	WEGRO I-FGH (5.8)	* I-FGH (2.5)		
GS 3.00° TCH 44	1600	I-FGH (1)		* LOC only
	6 NM	3.4 NM	1.4 NM	
CATEGORY	A	B	C	D
S-ILS 4		600-1 ⁵ / ₈	542 (600-1 ⁵ / ₈)	
S-LOC 4	540-1	482 (500-1)	540-1 ³ / ₈	482 (500-1 ³ / ₈)
C CIRCLING	540-1 468 (500-1)	640-1 568 (600-1)	640-1 ¹ / ₂ 568 (600-1 ¹ / ₂)	740-2 ¹ / ₄ 668 (700-2 ¹ / ₄)



HIRL Rwy 4-22 1
REIL Rws 15, 22 and 33 1
MIRL Rws 15-33 1

APP CRS 148°	Rwy Idg TDZE Apt Elev	4003 47 72
------------------------	-----------------------------	---------------------------------------

RNAV (GPS) RWY 15

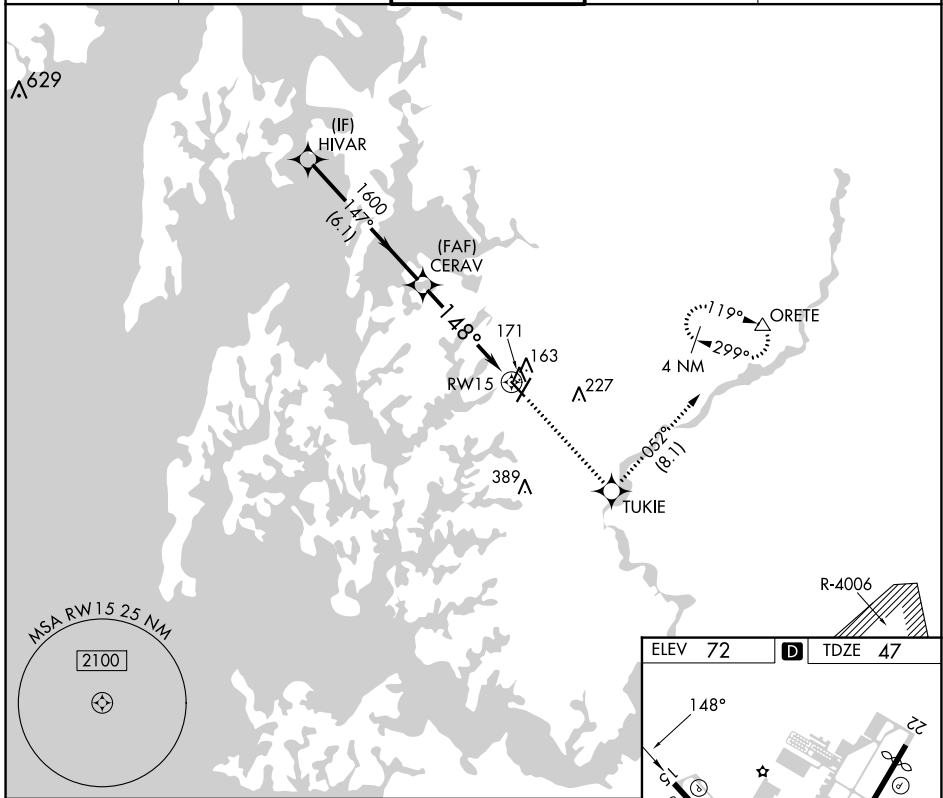
EASTON/NEWNAM FLD (ESN)

RNP APCH.

▼ Rwy 15 helicopter visibility reduction below 1 SM NA.
Straight-in Rwy 15 NA at night, Circling Rwy 15, 33 NA at night.

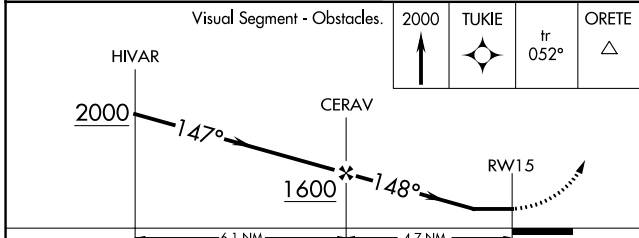
MISSED APPROACH: Climb to 2000 direct TUKIE and on track 052° to ORETE and hold.

ATIS 124.475	POTOMAC APP CON 133.75 254.35	EASTON TOWER ★ 118.525 (CTAF) 0	GND CON 119.075	CLNC DEL 119.075
------------------------	---	---	---------------------------	----------------------------

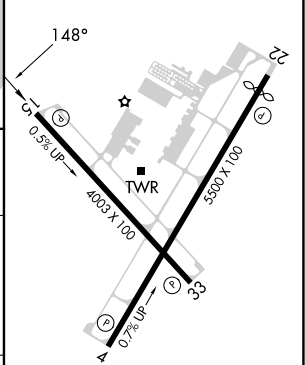


NE-3, 22 FEB 2024 to 21 MAR 2024

NE-3, 22 FEB 2024 to 21 MAR 2024



ELEV 72	D TDZE 47
---------	------------------



CATEGORY	A	B	C	D
LNVA MDA	440-1	393 (400-1)	440-1 1/8 393 (400-1 1/8)	440-1 1/4 393 (400-1 1/4)
C CIRCLING	480-1 408 (500-1)	640-1 568 (600-1)	640-1 1/2 568 (600-1 1/2)	740-2 668 (700-2)

HIRL Rwy 4-22 **0**
REIL Rwy 15, 22 and 33 **0**
MIRL Rwy 15-33 **0**

WAAS CH 40207 W22A	APP CRS 221°	Rwy Idg 5175 TDZE 72 Apt Elev 72
--	------------------------	---

RNAV (GPS) RWY 22

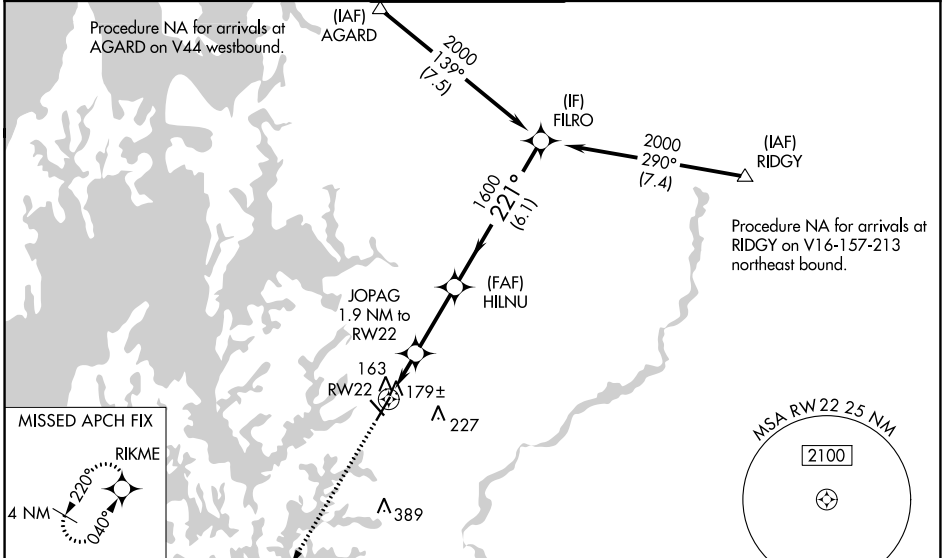
EASTON/NEWNAM FLD (E5N)

RNP APCH.

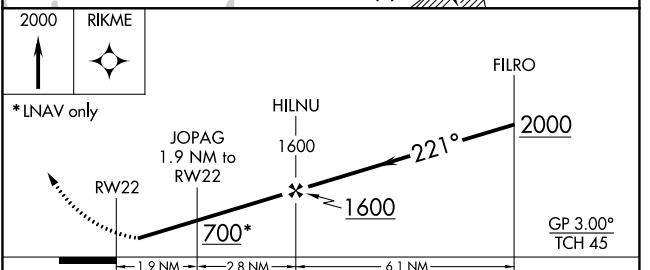
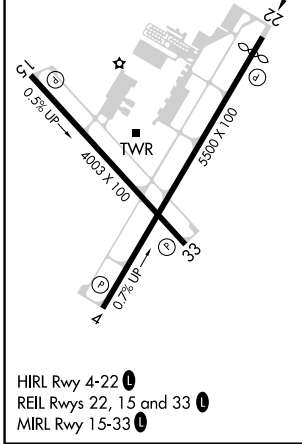
Baro-VNAV NA when using Baltimore altimeter setting. For uncompensated Baro-VNAV systems, LNAV/VNAV NA below -15°C or above 43°C. Rwy 22 helicopter visibility reduction below 3/4 SM NA. When local altimeter setting not received, use Baltimore altimeter setting and increase all DA 93 feet and all MDA 100 feet; increase LPV all Cats visibility 1/2 SM, increase LNAV/VNAV all Cats visibility 1/4 SM, and increase LNAV Cats C and D 1/4 SM.

MISSED APPROACH: Climb to 2000 direct RIKME and hold.

ATIS 124.475	POTOMAC APP CON 133.75 254.35	EASTON TOWER ★ 118.525 (CTAF)	GND CON 119.075	CLNC DEL 119.075
------------------------	---	--	---------------------------	----------------------------



ELEV 72	D	TDZE 72
---------	----------	---------



CATEGORY	A	B	C	D
LPV DA		322-1	250 (300-1)	
LNAV/VNAV DA		362-1	290 (300-1)	
LNAV MDA		440-1	368 (400-1)	

NE-3, 22 FEB 2024 to 21 MAR 2024

NE-3, 22 FEB 2024 to 21 MAR 2024

APP CRS	Rwy Idg	4003
328°	TDZE	51
	Apt Elev	72

RNAV (GPS) RWY 33

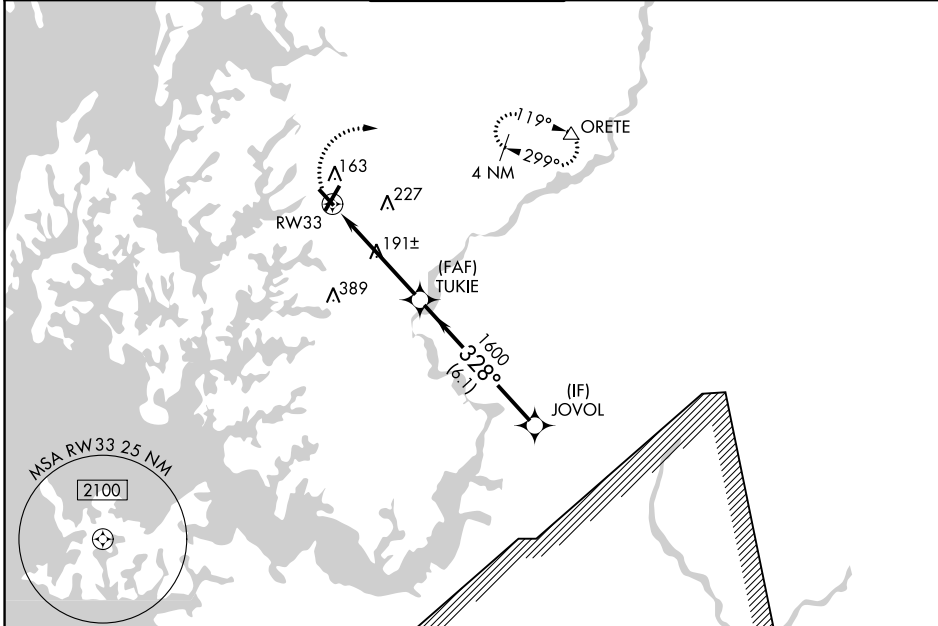
EASTON/NEWNAM FLD (E/SN)

RNP APCH.

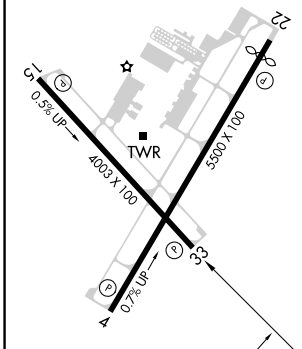
▼ Straight-in Rwy 33 NA at night, Circling Rwy 15, 33 NA at night.
Helicopter visibility reduction below 1 SM NA.

MISSED APPROACH:
Climbing right turn to 2000
direct ORETE and hold.

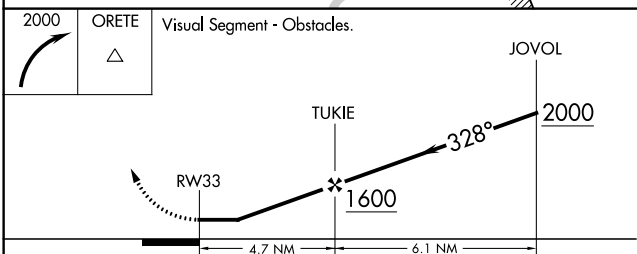
ATIS 124.475	POTOMAC APP CON 133.75 254.35	EASTON TOWER ★ 118.525 (CTAF) 0	GND CON 119.075	CLNC DEL 119.075
------------------------	---	--	---------------------------	----------------------------



ELEV 72	D	TDZE 51
---------	----------	---------



HIRL Rwy 4-22	1
REIL Rws 22, 15 and 33	1
MIRL Rwy 15-33	1



CATEGORY	A	B	C	D
LNAV MDA	520-1	469 (500-1)	520-1 3/8 469 (500-1 3/8)	520-1 1/2 469 (500-1 1/2)
C CIRCLING	520-1 448 (500-1)	640-1 568 (600-1)	640-1 1/2 568 (600-1 1/2)	740-2 668 (700-2)

NE-3, 22 FEB 2024 to 21 MAR 2024

NE-3, 22 FEB 2024 to 21 MAR 2024

WAAS CH 86905 W04A	APP CRS 040°	Rwy Idg TDZE 58 Apt Elev 72	4775
--	------------------------	---	-------------

RNAV (GPS) RWY 4

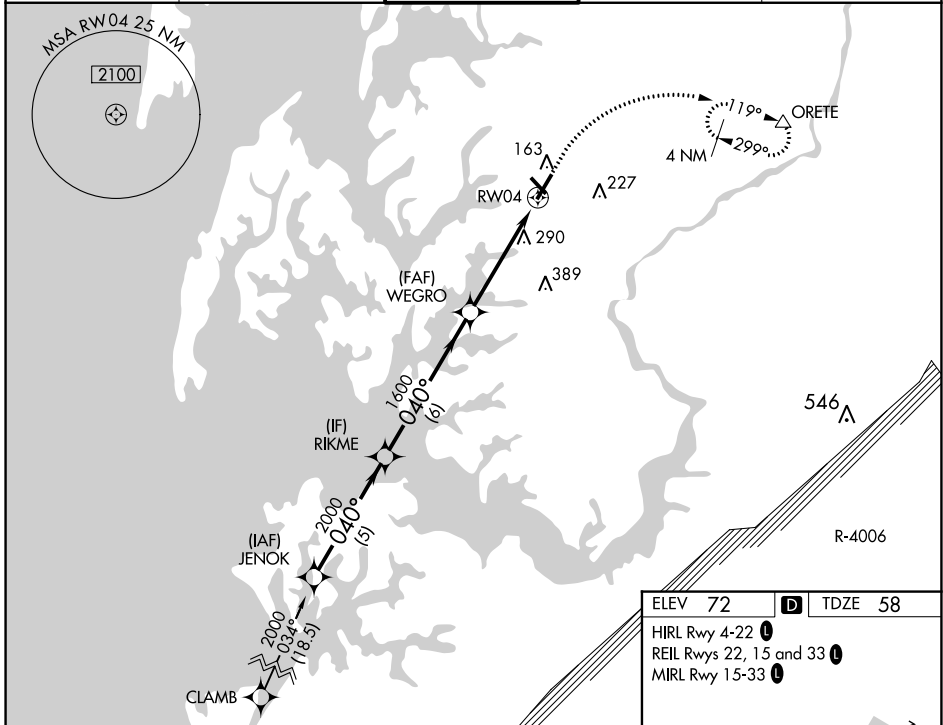
EASTON/NEWNAM FLD (ESN)

RNP APCH - GPS.

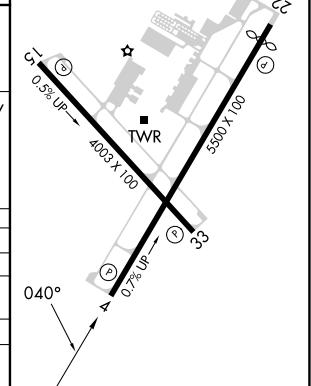
⚠ When local altimeter setting not received, use Cambridge altimeter setting; increase LPV DA to 303 feet, LNAV/VNAV DA to 670 feet and visibility 1/8 SM; increase all MDA's 60 feet and visibility LNAV Cat C/D and Circling Cat C 1/8 SM, and Circling Cat D 1/4 SM. VDP and Baro-VNAV NA when using Cambridge altimeter setting. Circling Rwy 15, 33 NA at night. For uncompensated Baro-VNAV systems, LNAV/VNAV NA below -15°C or above 54°C.

MISSSED APPROACH:
Climb to 700 then climbing right turn to 2000 direct ORETE and hold.

ATIS 124.475	POTOMAC APP CON 133.75 254.35	EASTON TOWER ★ 118.525 (CTAF) 0	GND CON 119.075	CLNC DEL 119.075
------------------------	---	--	---------------------------	----------------------------



	JENOK	RIKME	WEGRO	RW04	ORETE
	2000	2000	1600	700	2000
	040°	040°			
GP 3.00° TCH 44				*1.6 NM to RW04	*LNAV only
	5 NM	6 NM	3.1 NM	1.6	
CATEGORY	A	B	C	D	
LPV DA		258-3/4	200 (200-3/4)		
LNAV/VNAV DA		625-1 1/8	567 (600-1 1/8)		
LNAV MDA	600-1	542 (600-1)	600-1 1/8	542 (600-1 1/8)	
CIRCLING	600-1 528 (600-1)	640-1 568 (600-1)	640-1 1/8 568 (600-1 1/8)	740-2 668 (700-2)	



NE-3, 22 FEB 2024 to 21 MAR 2024

NE-3, 22 FEB 2024 to 21 MAR 2024