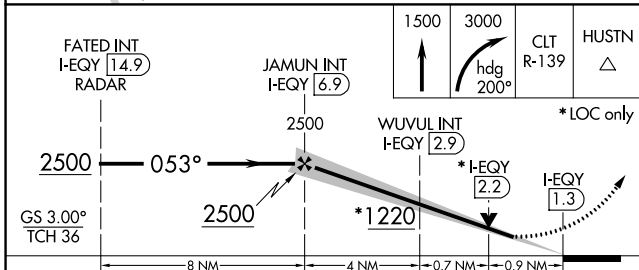
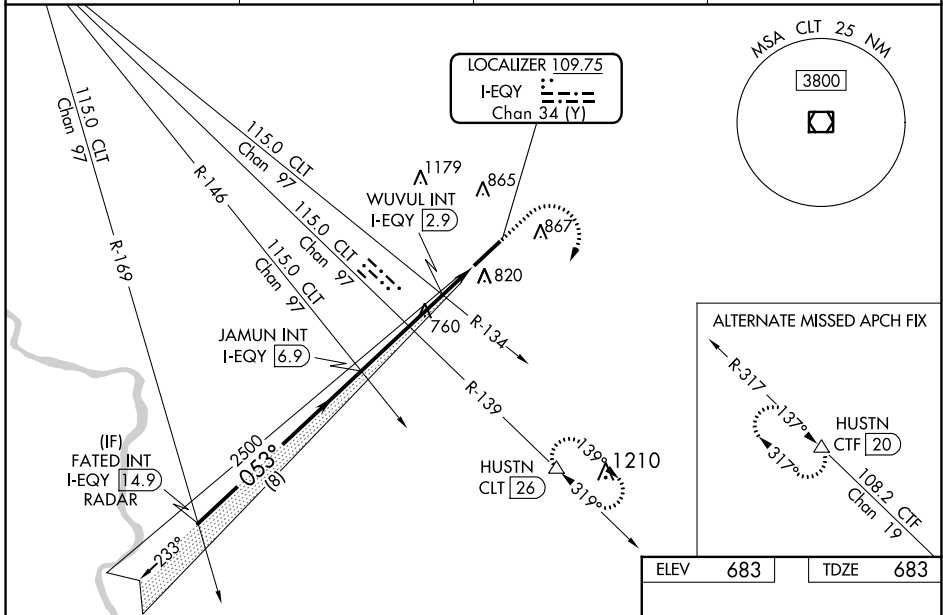


LOC/DME I-EQY <b>109.75</b> Chan 34 (Y)	APP CRS <b>053°</b>	Rwy Idg TDZE Apt Elev	<b>7001</b> <b>683</b> <b>683</b>
---	------------------------	-----------------------------	---

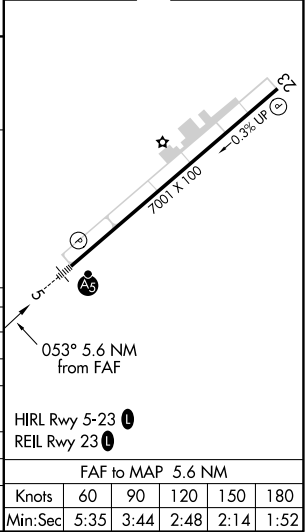
**ILS or LOC RWY 5**  
CHARLOTTE-MONROE EXECUTIVE (EQY)

DME required, RADAR required for procedure entry.		MALS R	MISSED APPROACH: Climb to 1500 then climbing right turn to 3000 on heading 200° and on CLT VOR/DME R-139 to HUSTN/CLT 26 DME and hold.
ASOS <b>135.775</b>	CHARLOTTE APP CON <b>120.05 307.8</b>	CLNC DEL <b>132.55</b>	UNICOM <b>122.7 (CTAF)</b>



ELEV 683	TDZE 683
----------	----------

CATEGORY	A	B	C	D
S-ILS 5	883-1/2 200 (200-1/2)			
S-LOC 5	1220-1/2	537 (600-1/2)	1220-1	537 (600-1)
CIRCLING	1220-1	537 (600-1)	1220-1 1/2 537 (600-1 1/2)	1480-2 1/2 797 (800-2 1/2)
WUVUL FIX MINIMUMS (DUAL VOR RECEIVERS OR DME REQUIRED)				
S-LOC 5	1020-1/2 337 (400-1/2)			
CIRCLING	1220-1	537 (600-1)	1220-1 1/2 537 (600-1 1/2)	1480-2 1/2 797 (800-2 1/2)



SE-2, 07 OCT 2021 to 04 NOV 2021

SE-2, 07 OCT 2021 to 04 NOV 2021

FAF to MAP 5.6 NM					
Knots	60	90	120	150	180
Min:Sec	5:35	3:44	2:48	2:14	1:52

WAAS CH <b>90141</b> <b>W23A</b>	APP CRS <b>233°</b>	Rwy Idg <b>7001</b> TDZE <b>671</b> Apt Elev <b>683</b>
--	------------------------	---

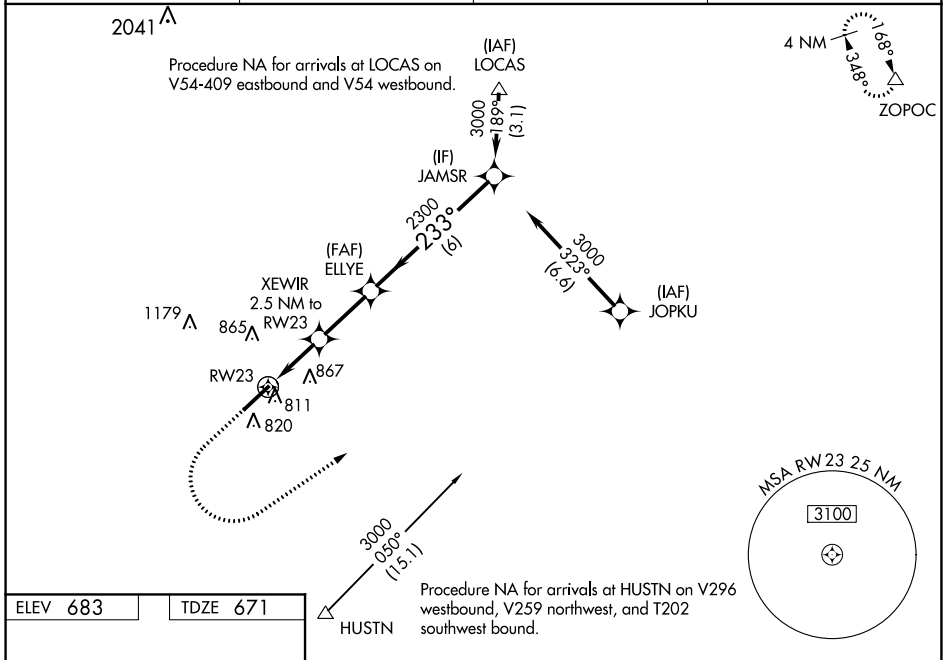
# RNAV (GPS) RWY 23

CHARLOTTE-MONROE EXECUTIVE (EQY)

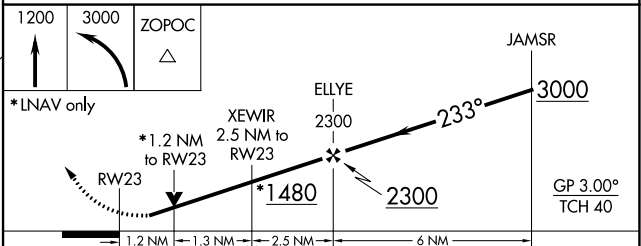
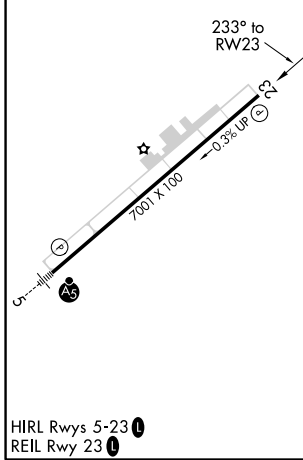
**⚠** For uncompensated Baro-VNAV systems, LNAV/VNAV NA below -10°C (14°F) or above 54°C (130°F).  
**⚠** Baro-VNAV and VDP NA when using Charlotte altimeter setting. DME/DME RNP-0.3 NA.  
 Rwy 23 helicopter visibility reduction below 3/4 SM NA. When local altimeter setting not received, use Charlotte altimeter setting: increase LPV DA to 995 feet and visibility all Cats 1/4 SM; increase LNAV/VNAV DA to 1037 feet and visibility all Cats 1/8 SM; increase all MDA 60 feet and LNAV Cats C/D and Circling Cat D visibility 1/4 mile.

**MISSED APPROACH:**  
 Climb to 1200 then climbing left turn to 3000 direct to ZOPOC and hold.

ASOS <b>135.775</b>	CHARLOTTE APP CON <b>120.05 307.8</b>	CLNC DEL <b>132.55</b>	UNICOM <b>122.7 (CTAF) 0</b>
------------------------	--	---------------------------	---------------------------------



ELEV 683	TDZE 671
----------	----------



CATEGORY	A	B	C	D
LPV DA		939-7/8	268 (300-7/8)	
LNAV/VNAV DA		981-1 1/8	310 (300-1 1/8)	
LNAV MDA	1080-1	409 (400-1)	1080-1 1/8	409 (400-1 1/8)
<b>C</b> CIRCLING	1220-1	537 (600-1)	1220-1 1/2	1480-2 1/2
			537 (600-1 1/2)	797 (800-2 1/2)

SE-2, 07 OCT 2021 to 04 NOV 2021

SE-2, 07 OCT 2021 to 04 NOV 2021

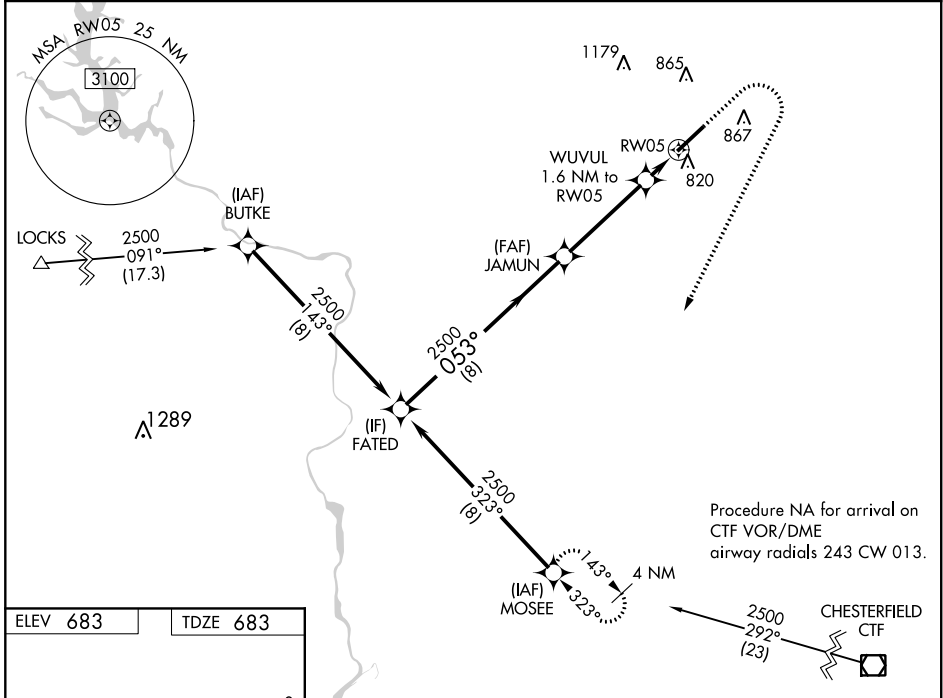
WAAS CH <b>66002</b> <b>W05A</b>	APP CRS <b>053°</b>	Rwy Idg TDZE Apt Elev	<b>7001</b> <b>683</b> <b>683</b>
--	------------------------	-----------------------------	---

# RNAV (GPS) RWY 5

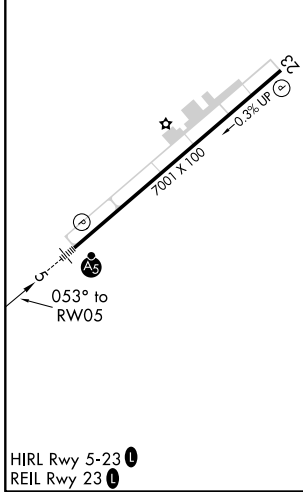
CHARLOTTE-MONROE EXECUTIVE (EQY)

RNP APCH.	MALSR	MISSED APPROACH: Climb to 1100 then climbing right turn to 2500 direct MOSEE and hold.
<p>⚠ For uncompensated Baro-VNAV systems, LNAV/VNAV NA below -10°C or above 54°C.</p>		

ASOS <b>135.775</b>	CHARLOTTE APP CON <b>120.05 307.8</b>	CLNC DEL <b>132.55</b>	UNICOM <b>122.7 (CTAF) 0</b>
------------------------	--	---------------------------	---------------------------------



ELEV 683	TDZE 683
----------	----------



FATED	JAMUN	WUVUL	MOSEE
2500	2500	1.6 NM to RW05	1100 2500 MOSEE
GP 3.00° TCH 46	2500	*0.9 NM to RW05	*LNAV only.
	8 NM	4 NM	0.7 NM 0.9 NM
CATEGORY	A	B	C D
LPV DA	883-1/2 200 (200-1/2)		
LNAV/VNAV DA	1001-5/8 318 (400-3/8)		
LNAV MDA	1020-1/2 337 (400-1/2)		
<input checked="" type="checkbox"/> CIRCLING	1220-1	537 (600-1)	1220-1/2 1480-2/2 537 (600-1/2) 797 (800-2/2)

SE-2, 07 OCT 2021 to 04 NOV 2021

SE-2, 07 OCT 2021 to 04 NOV 2021