

H-ILS Y or LOC Y RWY 17R

ELLINGTON (KEFD)

AL-197 [USAF]

LOC H-LPV	APCH CRS	Rwy Idg	9001
110.3	174°	TDZE Elev	32 Arpt Elev 33

DME required: RADAR required for procedure entry.
 ** When ALS Inop, increase CAT DDE wts to 1 $\frac{3}{8}$ miles.
 ** Circling not authorized W of Rwy 17R-35L.

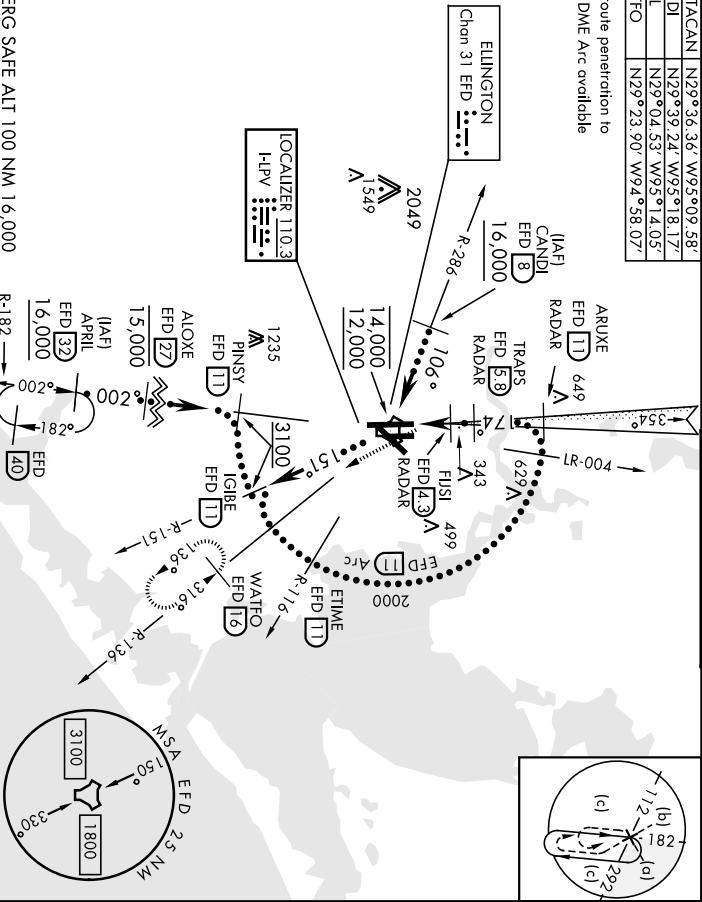
MAISF MISSED APPROACH: Climb to 700 then climbing left turn to 3100 on EFD TACAN R-136 to WATFO/ EFD 16 DME and hold.

AITS		HOUSTON APP CON	
135 575 269.9		134.45 284.0	

TOWER		GND CON	
126.05 253.5		121.6 275.8	

AITS		HOUSTON APP CON	
135 575 269.9		134.45 284.0	

Enroute penetration to
 11 DME Arc available



EMERG SAFE ALTI 100 NM 16,000

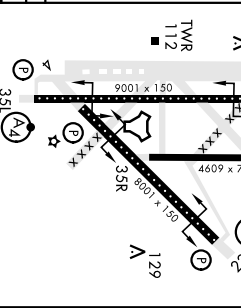
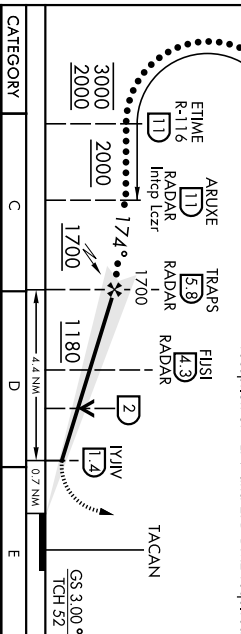
ELEV 33 D TDZE 32

VGSI and ILS GP IGBE
 not coincident (VGSI R-151)
 Angle 3.00/TCH 48)

700
 EFD 3100
 R-136

174° 5.1 NM from FAF
 129
 156 A
 9010 x 150
 4609 x 75
 351
 70

DME from EFD TACAN, simultaneous reception of H-LPV and EFD DME required



CATEGORY	C	D	E
S-ILS 17R	2322/40	200	(200- $\frac{3}{4}$)
S-LOC 17R*	480/50	448	(500-1)

CIRCLING**	580-1 $\frac{1}{2}$ 547 (600-1 $\frac{1}{2}$)	640-2 607 (700-2)	700-2 $\frac{1}{4}$ 667 (700- $\frac{3}{4}$)
------------	---	----------------------	--

HOUSTON, TEXAS
 Arrch 48 15AUG19

ELLINGTON (KEFD)

H-ILS Y or LOC Y RWY 17R



HOUSTON, TEXAS

21280

HILLS Y or LOC Y RWY 22

ELLINGTON (KEFD)

AL-197 [USAF]

LOC I/FNF	APCH CRS	Rwy Idg	8001
110.1	219°	TDZE Elev	31
		Appr Elev	33

DME required. RADAR required for procedure entry.

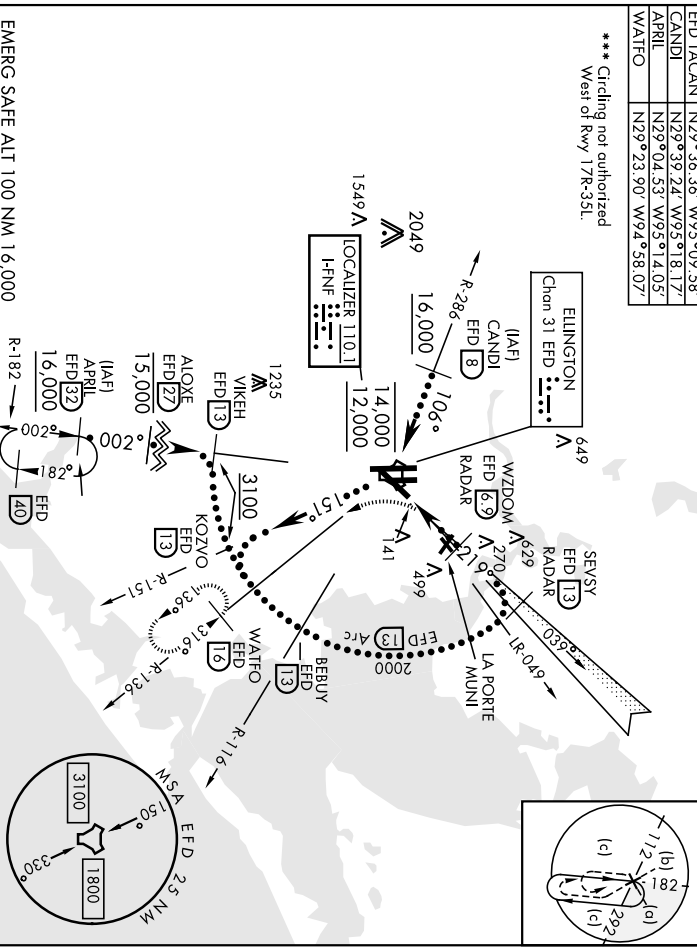
▼ **When ALS inop, increase CAT E RVR to 40.
▼ **When ALS inop, increase CAT E vis to 1/2 mile.

MAISR ^{****} MISSED APPROACH: Climb to 700 then climbing left turn to 3100 on FFD TACAN R-136 to WATFO/ EFD 6 DME end hold

HOUSTON APP CON	HOUSTON APP CON	TOWER	TOWER	GND CON	GND CON
135 575 269.9	134.45 284.0	126.05 253.5	121.6 275.8		

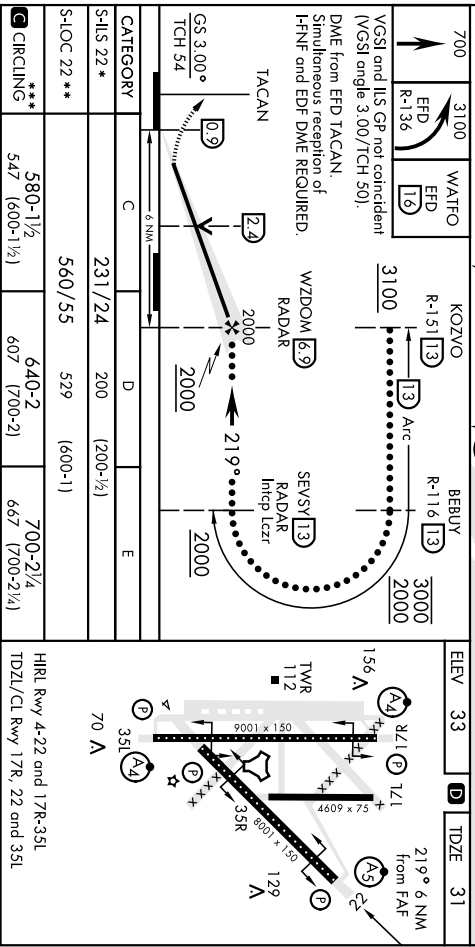
ELLINGTON	N29°36.36' W95°09.58'
CANDI	N29°39.24' W95°18.17'
APRIL	N29°04.53' W95°14.05'
WATFO	N29°23.90' W94°58.07'

*** Circling not authorized
West of Rwy 17R-35L.



SC-5, 22 FEB 2024 to 21 MAR 2024

EMERG SAFE ALT 100 NM NM 16,000



HOUSTON, TEXAS
Amdt 2 15AUG19
ELLINGTON (KEFD)
29°36'N-95°10'W

HILLS Y or LOC Y RWY 22



SC-5, 22 FEB 2024 to 21 MAR 2024

HILLS Y or LOC Y RWY 35L

[USAF]

ELLINGTON (KEFD)

Loc/FED
111.1

APCH CRS
354°

Rwy Idg
9001

TDZE
28

Appt Elev
33

DME required: RADAR required for procedure entry.
** Circling not authorized W of rwy 17L-35R

[A4]

MISSED APPROACH: Climb to 500 then climbing right turn to 3100 via EFD TACAN R-136 to WATFO/EFED

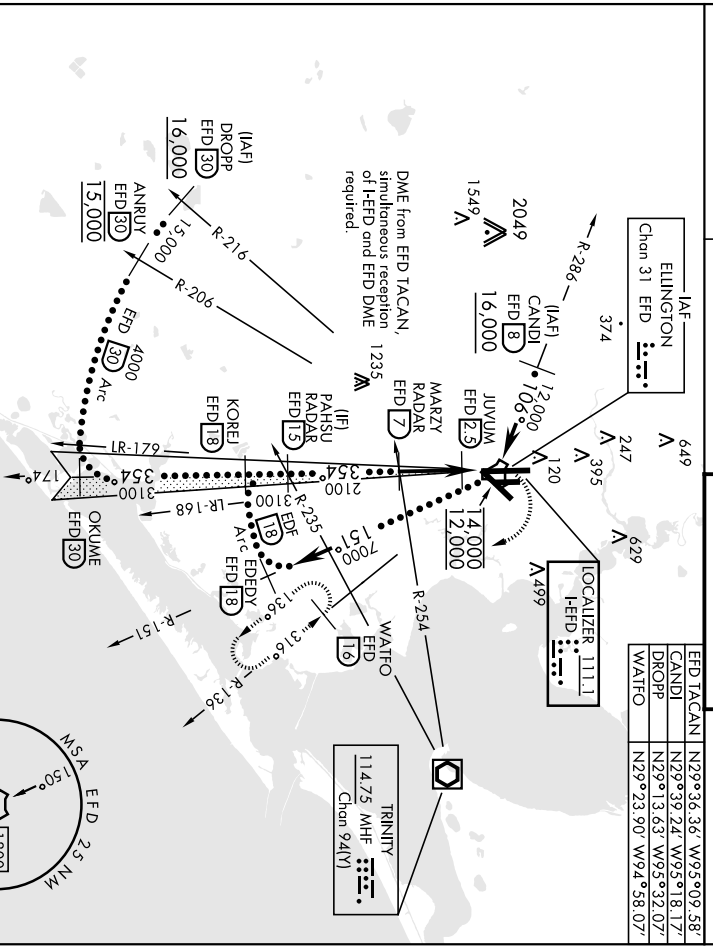
16 DME and hold

HOUSTON APP CON
134.45 284.0

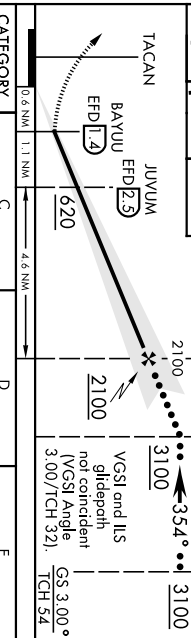
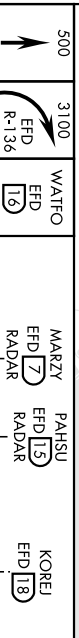
TOWER
126.05 253.5

GND CON
121.6 275.8

ATIS 135.575 269.9	HOUSTON APP CON 134.45 284.0	TOWER 126.05 253.5	GND CON 121.6 275.8
		EFED TACAN N29°36.36' W95°09.58'	
		CANDI N29°39.24' W95°18.17'	
		DROPP N29°13.63' W95°32.07'	
		WATFO N29°23.90' W94°58.07'	

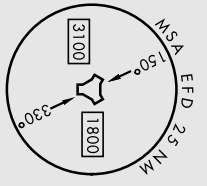


EMERG SAFE ALT 100 NM 16,000



CATEGORY	C	D	E
S-ILS 35L	228/40	200	[200-¾]
S-LOC 35L *	440/50	412	[500-1]
CIRCLING **	580-1½ (600-1½)	640-2 607 [700-2]	700-2¼ 667 [700-2¼]

HOUSTON, TEXAS	29°36'N 95°10'W
HOUSTON, TEXAS	29°36'N 95°10'W



HOUSTON, TEXAS

21,280

HI-TACAN RWY 35L

ELLINGTON (KEFD)

AL-197 [USAF]

TACAN FPD APCH CRS Rwy/Idg **9001**

Chom **31** 002° THR ELEV **28** Apt/Elev **33**

⚠ RADAR required for procedure entry

⚠ * When ALS inop, increase CAT CDE vis to 1 1/8 miles.
** Circling not authorized W of Rwy 17R-35L.

MAISF **A4**

MISSED APPROACH: Climbing right turn to 3100 on FFD TACAN R-136 to WAITFO/ FFD 16 DME and hold.

ATIS **1355 575 2693.9**

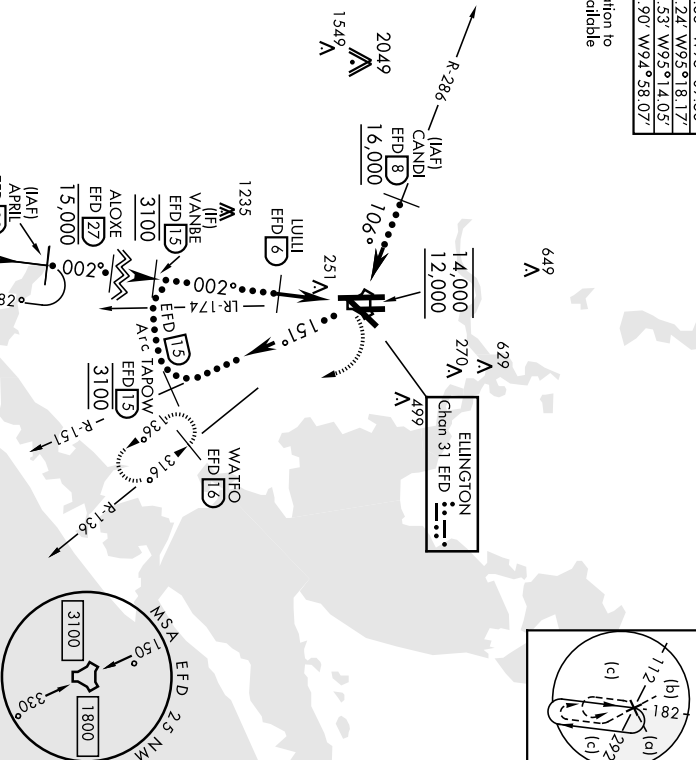
HOUSTON APP CON **134.45 284.0**

TOWER **126.05 253.5**

GND CON **121.6 275.8**

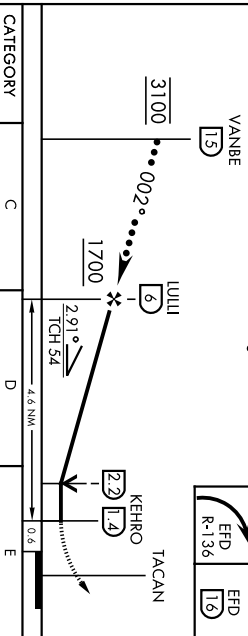
FFD TACAN	N29°36.36' W95°09.58'
CANDI	N29°39.24' W95°18.17'
APRIL	N29°04.53' W95°14.05'
WAITFO	N29°23.90' W94°58.07'

Enroute penetration to 15 DME Arc overhield



EMERG SAFE ALT 100 NM 16,000

VGS1 and descent angles not coincident



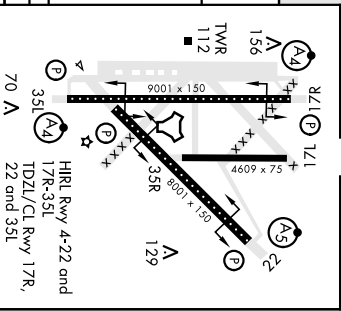
CATEGORY	C	520/60	492	(500-1 1/4)	700-2 1/4
S-35L *		580-1 1/2	640-2	(500-1 1/4)	700-2 1/4
Ⓞ CIRCLING**		547 (600-1 1/2)	607 (700-2)	667 (700-2 1/4)	

HOUSTON, TEXAS

29°36'N-95°10'W

Amdt 4B 09SEP21

ELEV	33	D	THRE	28
------	----	---	------	----



HI-TACAN RWY 35L

ELLINGTON (KEFD)

LOC I-LPV 110.3	APP CRS 174°	Rwy Idg TDZE Apt Elev	9001 32 33
---------------------------	------------------------	-----------------------------	---------------------------------------

ILS Z or LOC Z RWY 17R

ELLINGTON (EFD)

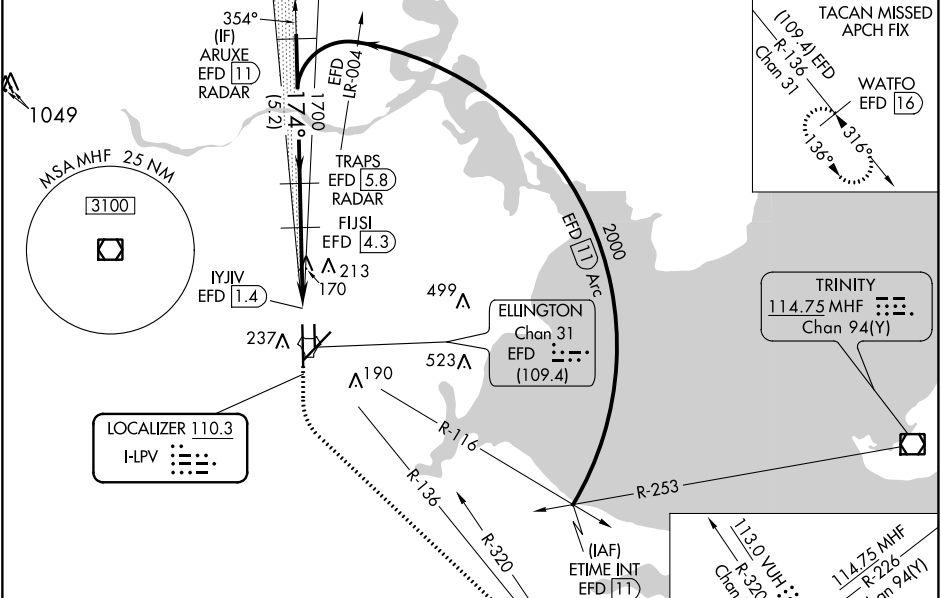
DME required. RADAR required for procedure entry.

⚠ Circling NA west of Rwy 17R-35L. DME from EFD TACAN.
 ⚠ Simultaneous reception of I-LPV and EFD DME required.
 Inop table does not apply to S-ILS 17R. For inop ALS, increase S-LOC 17R Cats C/D/E visibility to 1½ SM.

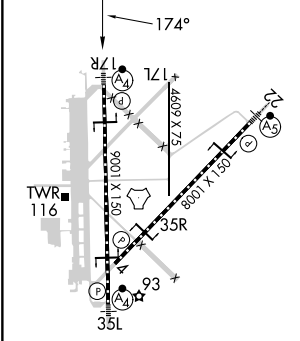
MALSFS

MISSED APPROACH: Climb to 700 then climbing left turn to 3100 on VUH VOR/DME R-320 to WATFO INT/VUH 9.3 DME and hold (TACAN aircraft climb to 700 then climbing left turn to 3100 on EFD TACAN R-136 to WATFO INT/EFD 16 DME and hold southeast, left turn, 316° inbound).

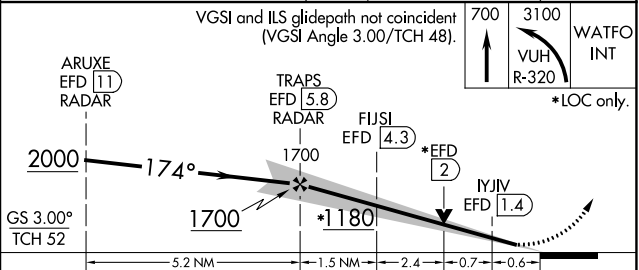
ATIS 135.575 269.9	HOUSTON APP CON 134.45 284.0	ELLINGTON TOWER 126.05 253.5	GND CON 121.6 275.8
------------------------------	--	--	-------------------------------



ELEV 33	D	TDZE 32
---------	----------	---------



HIRL Rws 4-22 and 17R-35L TDZ/CL Rws 17R, 22 and 35L



CATEGORY	A	B	C	D	E
S-ILS 17R	232/40		200 (200-¾)		
S-LOC 17R	480/40	448 (500-¾)	480/55	448 (500-1)	
C CIRCLING	500-1	467 (500-1)	580-1½ 547 (600-1½)	640-2 607 (700-2)	700-2¼ 667 (700-2¼)

SC-5, 22 FEB 2024 to 21 MAR 2024

SC-5, 22 FEB 2024 to 21 MAR 2024

LOC I-FNF 110.1	APP CRS 219°	Rwy Idg TDZE Apt Elev	8001 31 33
---------------------------	------------------------	-----------------------------	---------------------------------------

ILS Z or LOC Z RWY 22

ELLINGTON (EFD)

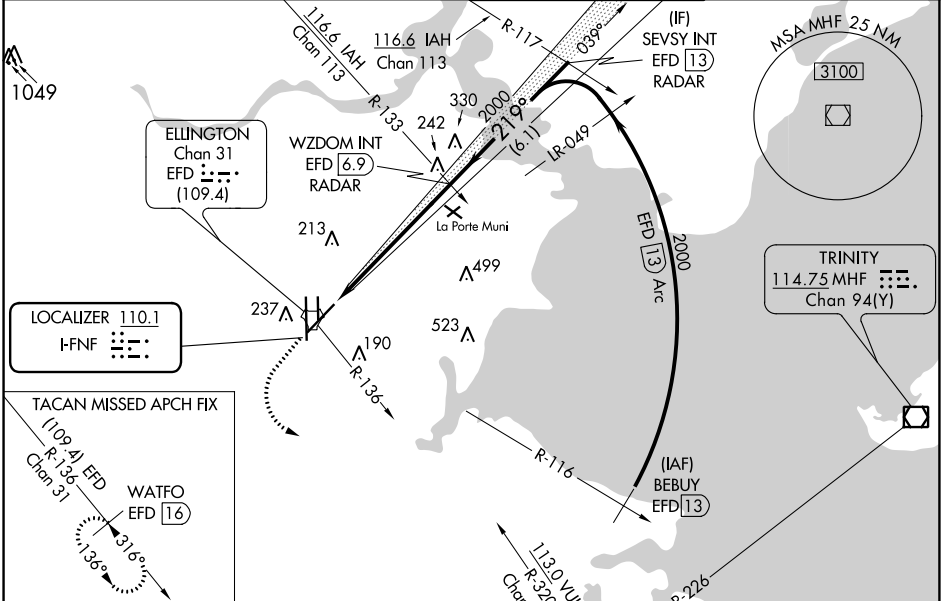
RADAR required for procedure entry.

⚠ Circling NA west of Rwy 17R-35L. DME from EFD TACAN. Simultaneous reception of I-FNF and EFD DME required. For inop ALS, increase S-ILS 22 Cat E visibility to RVR 4000 and S-LOC 22 Cat E visibility to 1½ SM.

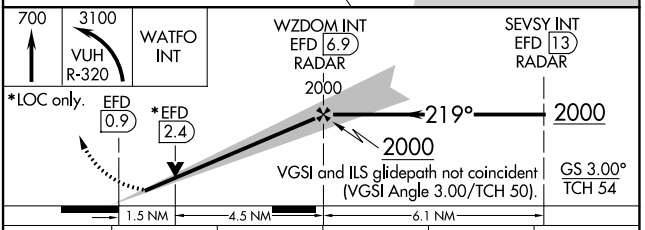
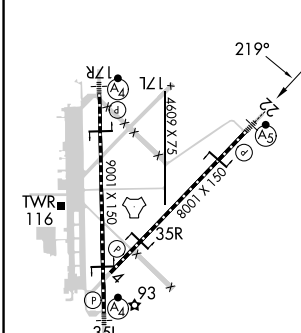
MALSR

MISSED APPROACH: Climb to 700 then climbing left turn to 3100 on VUH VOR/DME R-320 to WATFO INT/VUH 9.3 DME and hold. (TACAN aircraft climb to 700 then climbing left turn to 3100 on EFD TACAN R-136 to WATFO/EFD 16 DME and hold southeast, left turn, 316° inbound.)

ATIS 135.575 269.9	HOUSTON APP CON 134.45 284.0	ELLINGTON TOWER 126.05 253.5	GND CON 121.6 275.8
------------------------------	--	--	-------------------------------



ELEV 33	D	TDZE 31
---------	----------	---------



HIRL Rwy 4-22 and 17R-35L TDZ/CL Rwy 17R, 22 and 35L FAF to MAP 6 NM	<table border="1"> <tr> <td>CATEGORY</td> <td>A</td> <td>B</td> <td>C</td> <td>D</td> <td>E</td> </tr> <tr> <td>S-ILS 22</td> <td colspan="5">231/18 200 (200-½)</td> </tr> <tr> <td>S-LOC 22</td> <td>560/24</td> <td>529 (600-½)</td> <td colspan="3">560/55 529 (600-1)</td> </tr> <tr> <td>C CIRCLING</td> <td>560-1</td> <td>527 (600-1)</td> <td>580-1½ 547 (600-1½)</td> <td>640-2 607 (700-2)</td> <td>700-2¼ 667 (700-2¼)</td> </tr> </table>					CATEGORY	A	B	C	D	E	S-ILS 22	231/18 200 (200-½)					S-LOC 22	560/24	529 (600-½)	560/55 529 (600-1)			C CIRCLING	560-1	527 (600-1)	580-1½ 547 (600-1½)	640-2 607 (700-2)	700-2¼ 667 (700-2¼)
CATEGORY	A	B	C	D	E																								
S-ILS 22	231/18 200 (200-½)																												
S-LOC 22	560/24	529 (600-½)	560/55 529 (600-1)																										
C CIRCLING	560-1	527 (600-1)	580-1½ 547 (600-1½)	640-2 607 (700-2)	700-2¼ 667 (700-2¼)																								

SC-5, 22 FEB 2024 to 21 MAR 2024

SC-5, 22 FEB 2024 to 21 MAR 2024

LOC I-EPD 111.1	APP CRS 354°	Rwy Idg TDZE Apt Elev 9001 28 33
---------------------------	------------------------	--

ILS Z or LOC Z RWY 35L

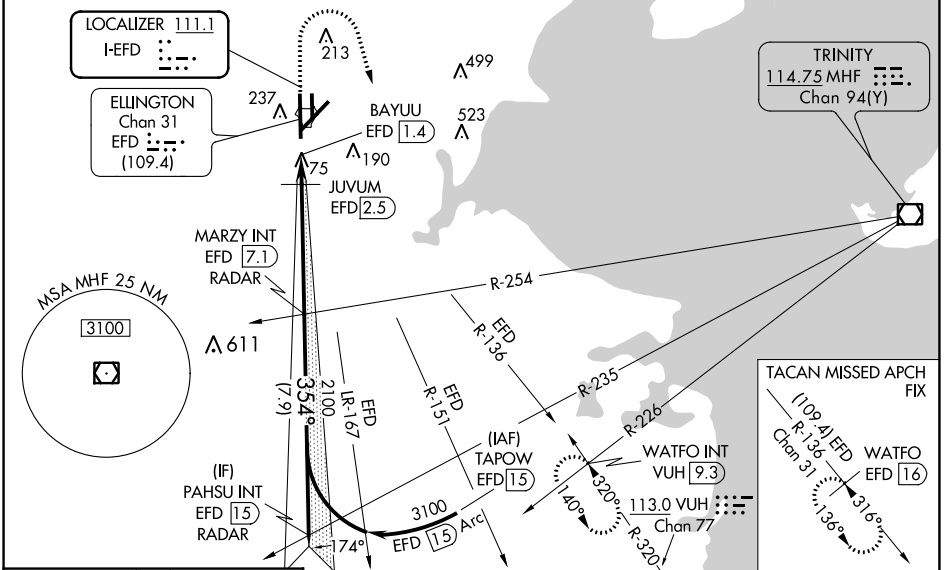
ELLINGTON (EFD)

RADAR required for procedure entry.

⚠ Circling NA west of Rwy 17R-35L. DME from EFD TACAN. Simultaneous reception of I-EPD and EFD DME required. Inop table does not apply to S-ILS 35L. For inop ALS, increase S-LOC 35L Cat C/D/E visibility to 1 3/4 SM. For inop ALS when using JUVUM fix minimums, increase S-LOC 35L Cat C/D/E visibility to RVR 6000.

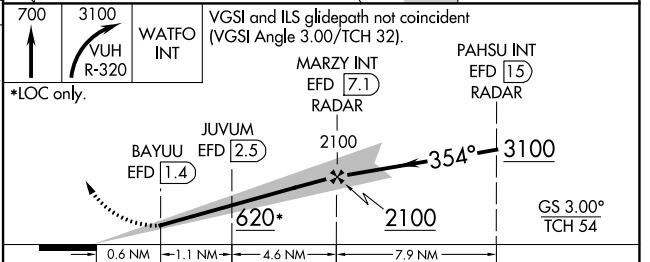
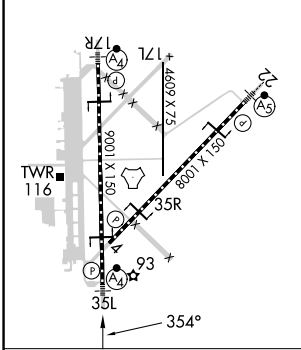
MALSIF
⚠ MISSED APPROACH: Climb to 700 then dimbing right turn to 3100 on VUH VOR/DME R-320 to WATFO INT/VUH 9.3 DME and hold. (TACAN aircraft climb to 700 then dimbing right turn to 3100 on EFD TACAN R-136 to WATFO/EFD 16 DME and hold southeast, left turn, 316° inbound).

ATIS 135.575 269.9	HOUSTON APP CON 134.45 284.0	ELLINGTON TOWER 126.05 253.5	GND CON 121.6 275.8
------------------------------	--	--	-------------------------------



ELEV 33	D TDZE 28
---------	------------------

HIRL Rwy 4-22 and 17R-35L TDZ/CL Rwy 17R, 22 and 35L



CATEGORY	A	B	C	D	E
S-ILS 35L	228/40 200 (200-3/4)				
S-LOC 35L	620/40	592 (600-3/4)	620-1 3/8		592 (600-1 3/8)
C CIRCLING	620-1	587 (600-1)	620-1 3/4	640-2	700-2 1/4
JUVUM FIX MINIMUMS (DME REQUIRED)					
S-LOC 35L	440/40	412 (500-3/4)	440/50		412 (500-1)
C CIRCLING	500-1	467 (500-1)	580-1 1/2	640-2	700-2 1/4

SC-5, 22 FEB 2024 to 21 MAR 2024

SC-5, 22 FEB 2024 to 21 MAR 2024

WAAS CH 70625 W17A	APP CRS 174°	Rwy Idg 9001 TDZE 32 Apt Elev 33
--	------------------------	---

RNAV (GPS) RWY 17R

ELLINGTON (EFD)

⚠ For uncompensated Baro-VNAV systems, LNAV/VNAV NA below -15°C (5°F) or above 43°C (109°F). DME/DME RNP-0.3 NA. Inop table does not apply to LPV DA. For inop MALSF, increase LNAV/VNAV all Cats and LNAV Cats A and B visibility to RVR 5500 and Cats C/D/E visibility to 1½ miles. Circling NA west of Rwy 17R-35L.

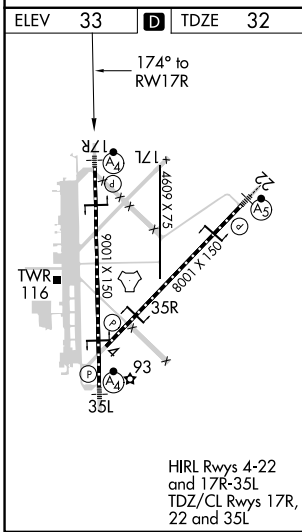
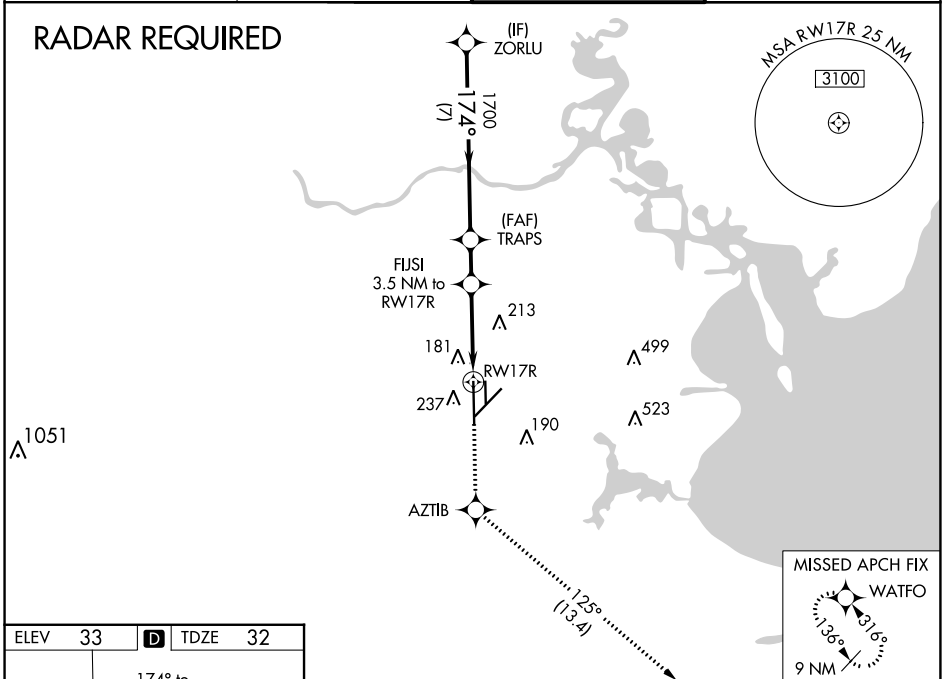
MALSF



MISSED APPROACH: Climb to 3100 direct AZTIB and on track 125° to WATFO and hold.

ATIS 135.575 269.9	HOUSTON APP CON 134.45 284.0	ELLINGTON TOWER 126.05 253.5	GND CON 121.6 275.8
------------------------------	--	--	-------------------------------

RADAR REQUIRED



VGSI and RNAV glidepath not coincident (VGSI Angle 3.00/TCH 48).		3100	AZTIB	fr 125°	WATFO
ZORLU	2000	TRAPS	FUJSI	*LNAV only.	
	174°	1700	3.5 NM to RWY 17R	*1.4 NM to RWY 17R	RWY 17R
	1700				
GP 3.00°					
TCH 52					
CATEGORY	A	B	C	D	E
LPV DA		232/40	200 (200-¾)		
LNAV/VNAV DA		363/40	331 (400-¾)		
LNAV MDA	500/40	468 (500-¾)	500/60	468 (500-1¼)	
<input checked="" type="checkbox"/> CIRCLING	500-1	467 (500-1)	580-1½ 547 (600-1½)	640-2 607 (700-2)	700-2¼ 667 (700-2¼)

SC-5, 22 FEB 2024 to 21 MAR 2024

SC-5, 22 FEB 2024 to 21 MAR 2024

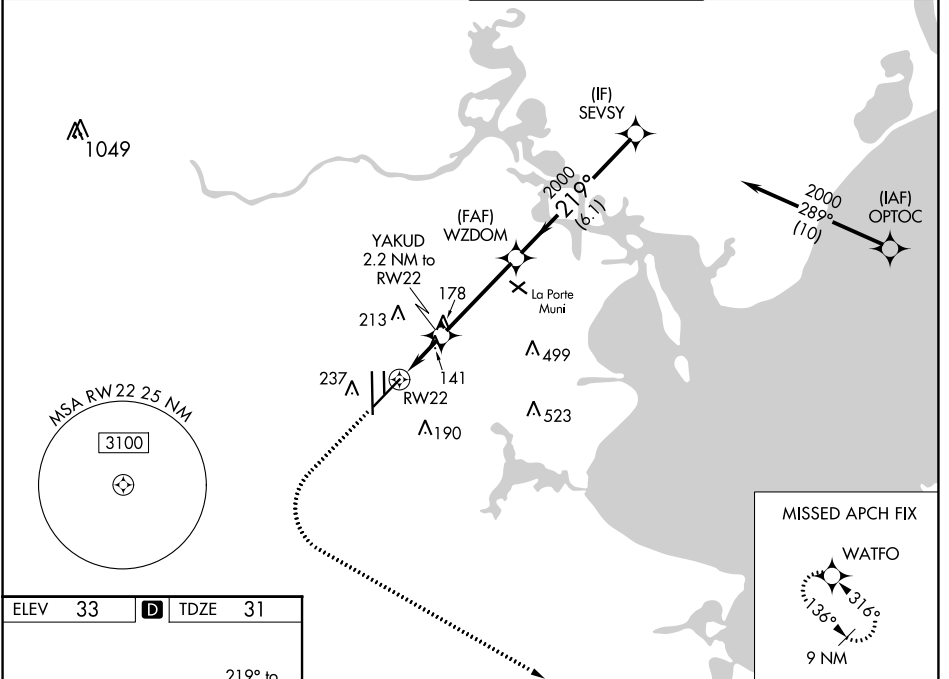
WAAS CH 61111	APP CRS 219°	Rwy Idg 8001
W22A		TDZE 31
		Apt Elev 33

RNAV (GPS) RWY 22

ELLINGTON (EFD)

RNP APCH.	MALSR	MISSED APPROACH: Climb to 500 then climbing left turn to 3100 direct WATFO and hold.
<p>⚠ Circling NA west of Rwy 17R - 35L. For uncompensated Baro-VNAV systems, LNAV/VNAV NA below -1.5°C or above 54°C. For inop ALS, increase LPV Cat E visibility to RVR 4000, LNAV/VNAV all Cats visibility to RVR 4500, and LNAV Cats C/D/E visibility to RVR 5500.</p>		

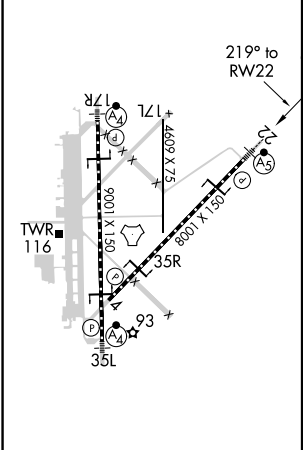
ATIS 135.575 269.9	HOUSTON APP CON 134.45 284.0	ELLINGTON TOWER 126.05 253.5	GND CON 121.6 275.8
------------------------------	--	--	-------------------------------



SC-5, 22 FEB 2024 to 21 MAR 2024

SC-5, 22 FEB 2024 to 21 MAR 2024

ELEV 33	D	TDZE 31
---------	----------	---------



500	3100	WATFO	VGSi and RNAV glidepath not coincident (VGSi Angle 3.00/TCH 50).			
*LNAV only.		YAKUD 2.2 NM to RW22	WZDOM 2000	SEVSY 2000		
*1 NM to RW22		219°		GP 3.00° TCH 54		
1 NM		1.2 NM		3.8 NM		
CATEGORY		A	B	C	D	E
LPV		DA	231/18		200 (200-1/2)	
LNAV/VNAV		DA	341/24		310 (400-1/2)	
LNAV MDA		400/24	369 (400-1/2)		400/35 369 (400-3/4)	
C CIRCLING		500-1	467 (500-1)	580-1 1/2 547 (600-1 1/2)	640-2 607 (700-2)	700-2 1/4 667 (700-2 1/4)

HIRL Rwy 4-22 and 17R-35L
TDZ/CL Rwy 17R, 22 and 35L

WAAS CH 97629 W35A	APP CRS 354°	Rwy Idg 9001 TDZE 28 Apt Elev 33
--	------------------------	---

RNAV (GPS) RWY 35L

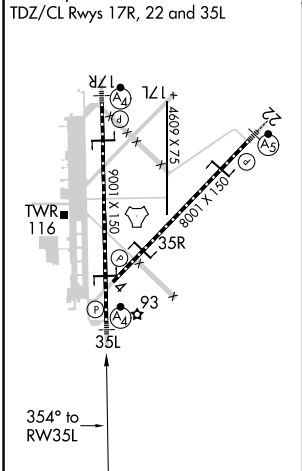
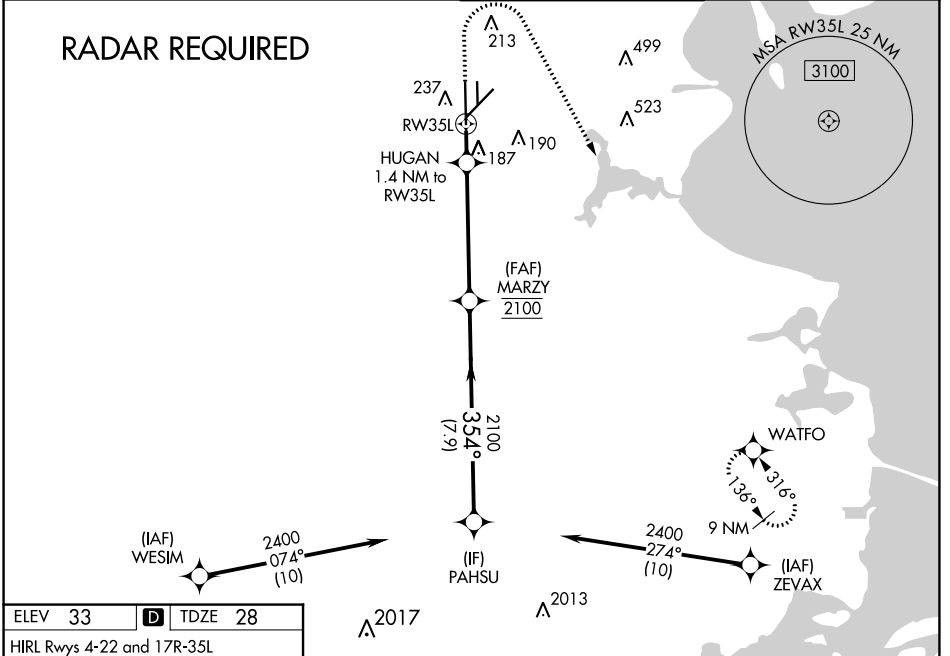
ELLINGTON (EFD)

⚠ For uncompensated Baro-VNAV systems, LNAV/VNAV NA below -15°C (5°F) or above 43°C (109°F). Circling NA west of Rwy 17R-35L DME/DME RNP-0.3 NA. For inop MALSF, increase LNAV/VNAV all Cats visibility to 1½ mile, and LNAV Cats A and B visibility to 1 mile and Cats C, D and E visibility to 1½ mile. Inop table does not apply to LPV.

MALSF

MISSED APPROACH: Climb to 1500 then climbing right turn to 3100 direct WATFO and hold.

ATIS 135.575 269.9	HOUSTON APP CON 134.45 284.0	ELLINGTON TOWER 126.05 253.5	GND CON 121.6 275.8
------------------------------	--	--	-------------------------------



ELEV 33 TDZE 28

HIRL Rws 4-22 and 17R-35L
TDZ/CL Rws 17R, 22 and 35L

1500 3100 WATFO
VGSI and RNAV glidepath not coincident (VGSI Angle 3.00/TCH 32).

*LNAV only.

HUGAN 1.4 NM to RW35L
MARZY 2100
PAHSU 2400
RW35L
520*
2100
354°
GP 3.00° TCH 54

CATEGORY	A	B	C	D	E
LPV DA	228/40		200 (200-¾)		
LNAV/VNAV DA	499/60		471 (500-1¼)		
LNAV MDA	440/40	412 (500-¾)	440/50		412 (500-1)
C CIRCLING	500-1	468 (500-1)	580-1½ 547 (600-1½)	640-2 607 (700-2)	700-2¼ 667 (700-2¼)

SC-5, 22 FEB 2024 to 21 MAR 2024

SC-5, 22 FEB 2024 to 21 MAR 2024

APP CRS 039°	Rwy Idg 8001 TDZE 30 Apt Elev 33
------------------------	---

RNAV (GPS) RWY 4

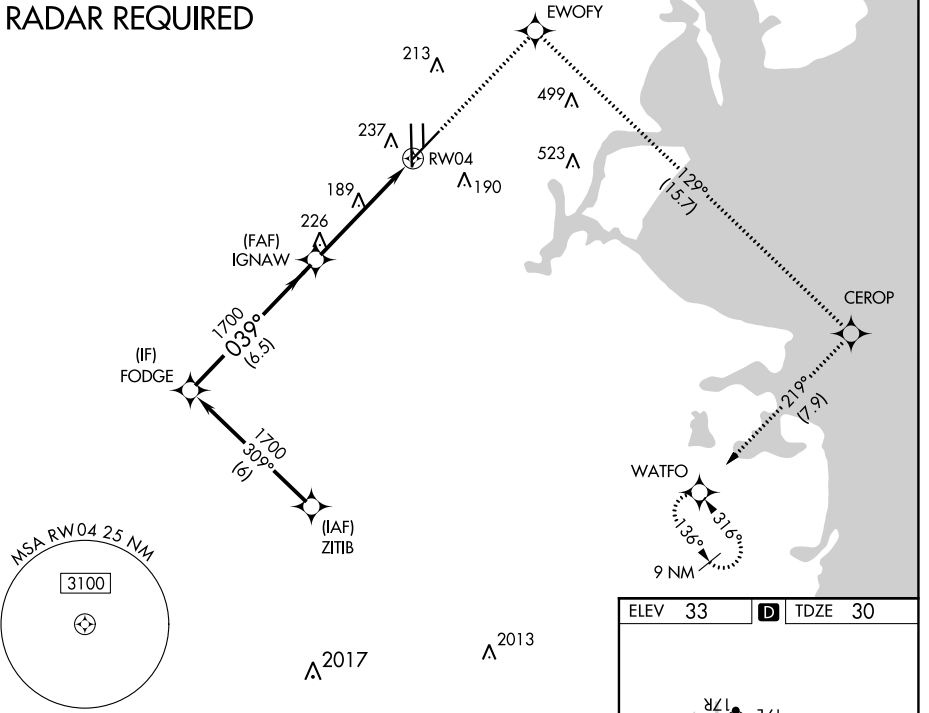
ELLINGTON (EFD)

⚠ Circling NA west of Rwy 17R-35L.
⚠ DME/DME RNP-0.3 NA.
 Helicopter visibility reduction below 1 SM NA.

MISSED APPROACH: Climb to 3100 direct EWOFY and right turn on track 129° to CEROP and right turn on track 219° to WATFO and hold.

ATIS 135.575 269.9	HOUSTON APP CON 134.45 284.0	ELLINGTON TOWER 126.05 253.5	GND CON 121.6 275.8
------------------------------	--	--	-------------------------------

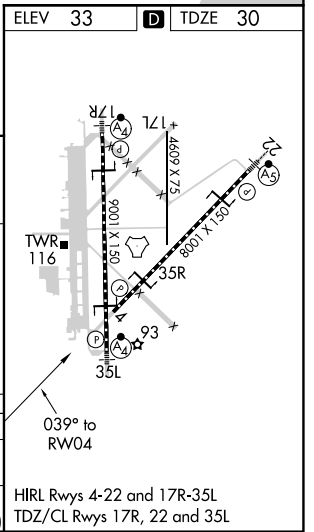
RADAR REQUIRED



SC-5, 22 FEB 2024 to 21 MAR 2024

SC-5, 22 FEB 2024 to 21 MAR 2024

	3100	EWOFY	CEROP	WATFO	
	↑	✧	↷ tr 129°	✧	
				↷ tr 219°	
				✧	
FODGE	IGNAW		RWY04		
1700	1700				
039°		3.04°			
		TCH 50			
6.5 NM		5 NM			
CATEGORY	A	B	C	D	E
LNAV MDA	500-1	470 (500-1)	500-1 $\frac{3}{8}$	470 (500-1 $\frac{3}{8}$)	
C CIRCLING	500-1	467 (500-1)	580-1 $\frac{1}{2}$ 547 (600-1 $\frac{1}{2}$)	640-2 607 (700-2)	700-2 $\frac{1}{4}$ 667 (700-2 $\frac{1}{4}$)



TACAN EFD Chan 31 (109.4)	APP CRS 163°	Rwy Idg TDZE Apt Elev	9001 32 33
--	------------------------	-----------------------------	---------------------------------------

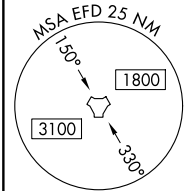
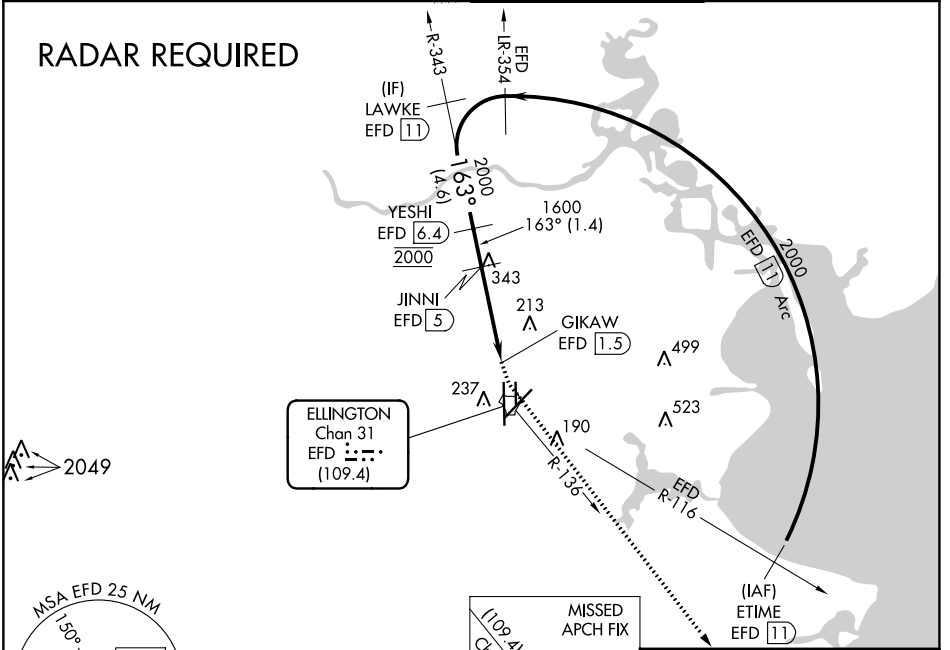
TACAN RWY 17R

ELLINGTON (EFD)

▼ When ALS inop, increase visibility Cat A/B to RVR 5500 and Cat C/D/E visibility to 1½ miles.
▲ NA Circling NA west of Rwy 17R-35L

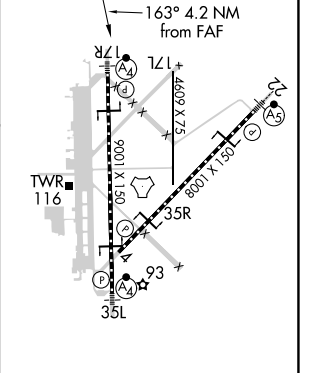
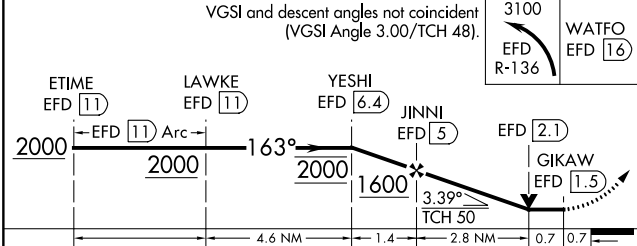
MALSF MISSED APPROACH: Climbing left turn to 3100 on EFD TACAN R-136 to WATFO/EFD 16 DME and hold.

ATIS 135.575 269.9	HOUSTON APP CON 134.45 284.0	ELLINGTON TOWER 126.05 253.5	GND CON 121.6 275.8
------------------------------	--	--	-------------------------------



ESA W/IN 100 NM 16000

ELEV 33	D	TDZE 32
---------	----------	---------



CATEGORY	A	B	C	D	E
S-17R	500/40	468 (500-¾)	500/60 468 (500-1¼)		
CIRCLING	500-1	467 (500-1)	580-1½ 547 (600-1½)	640-2 607 (700-2)	700-2¼ 667 (700-2¼)

HIRL Rwy 4-22 and 17R-35L
 TDZ/CL Rwy 17R, 22 and 35L

SC-5, 22 FEB 2024 to 21 MAR 2024

SC-5, 22 FEB 2024 to 21 MAR 2024

TACAN EFD Chan 31 (109.4)	APP CRS 226°	Rwy Idg 8001 TDZE 31 Apt Elev 33
--	------------------------	---

TACAN RWY 22

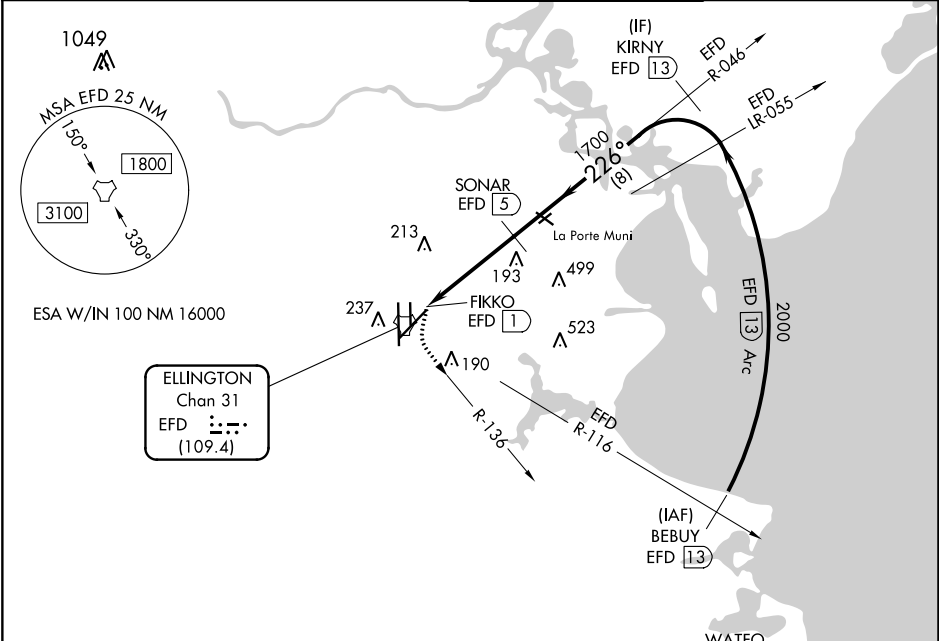
ELLINGTON (EFD)

∇ Circling NA west of Rwy 17R-35L. When ALS inop, increase S-22
Δ NA Cat A/B visibility to RVR 5500 and Cat C/D/E to 1 3/8 miles.



MISSED APPROACH: Climbing left turn to 3100 on EFD TACAN R-136 to WATFO/EFD 16 DME and hold.

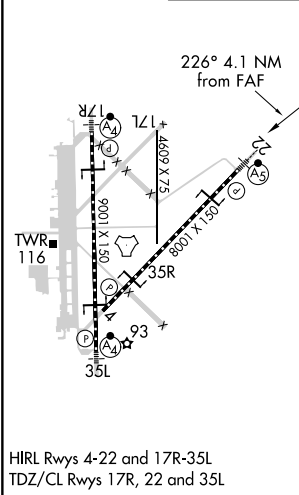
ATIS 135.575 269.9	HOUSTON APP CON 134.45 284.0	ELLINGTON TOWER 126.05 253.5	GND CON 121.6 275.8
------------------------------	--	--	-------------------------------



SC-5, 22 FEB 2024 to 21 MAR 2024

SC-5, 22 FEB 2024 to 21 MAR 2024

ELEV 33	D	TDZE 31
---------	----------	---------



RADAR REQUIRED

3100 EFD R-136

WATFO EFD 16

VGSI and descent angles not coincident (VGSI Angle 3.00/TCH 50).

Cat D/E VDA not for civil use.

SONAR EFD 5

226°

1700

2000

FIKKO EFD 1

EFD 2.2

3.69° TCH 55

0.2 1.2 2.7 NM 8 NM

CATEGORY	A	B	C	D	E
S-22	500/24	469 (500-1/2)	500/50	469 (500-1)	
C CIRCLING	500-1	467 (500-1)	580-1 1/2 547 (600-1 1/2)	640-2 607 (700-2)	700-2 1/4 667 (700-2 1/4)

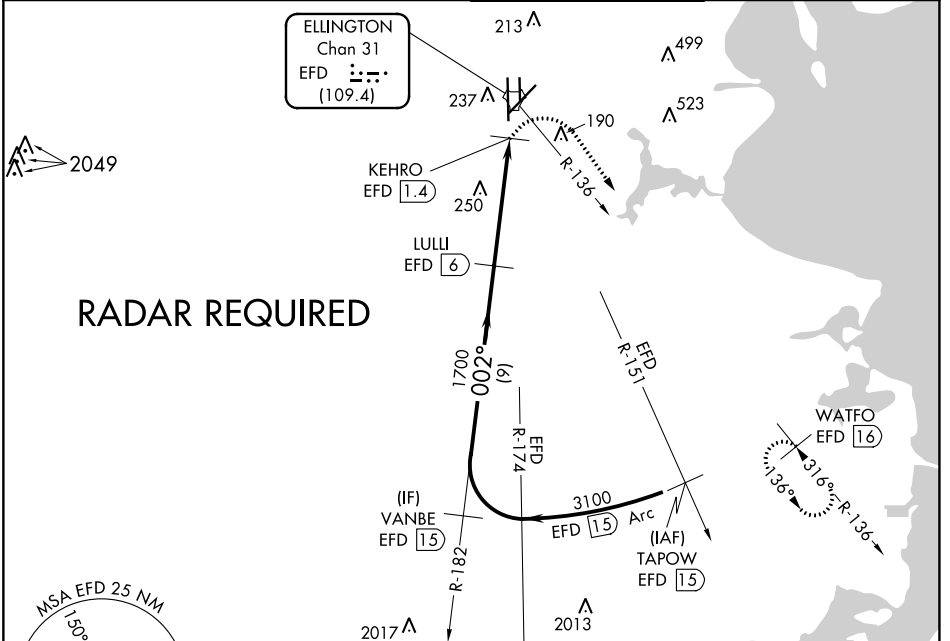
TACAN EFD Chan 31 (109.4)	APP CRS 002°	Rwy Idg TDZE 28 Apt Elev 33
--	------------------------	---

TACAN RWY 35L

ELLINGTON (EFD)

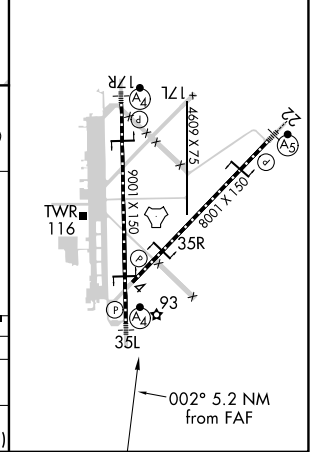
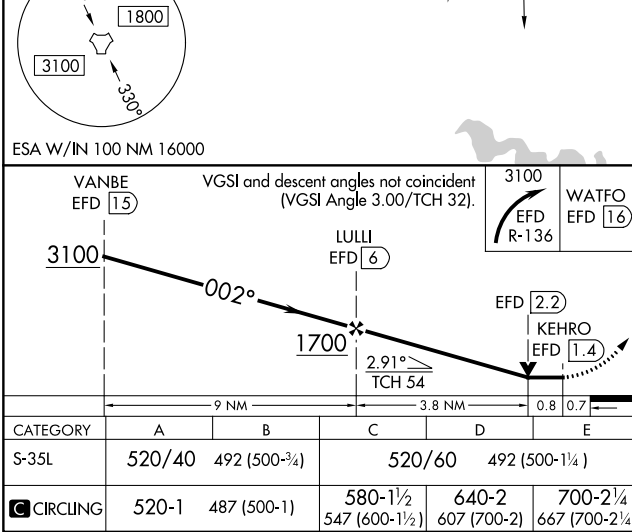
NA Circling NA west of Rwy 17R-35L. When ALS inop, increase S-35L Cats A/B visibility to RVR 5500 and Cats C/D/E to 1 3/8 miles.	MALSF	MISSED APPROACH: Climbing right turn to 3100 on EFD TACAN R-136 to WATFO/EFD 16 DME and hold.
---	-------	---

ATIS 135.575 269.9	HOUSTON APP CON 134.45 284.0	ELLINGTON TOWER 126.05 253.5	GND CON 121.6 275.8
------------------------------	--	--	-------------------------------



ELEV 33	D	TDZE 28
---------	----------	---------

HIRL Rws 4-22 and 17R-35L
TDZ/CL Rws 17R, 22 and 35L



SC-5, 22 FEB 2024 to 21 MAR 2024

SC-5, 22 FEB 2024 to 21 MAR 2024

TACAN EFD Chan 31 (109.4)	APP CRS 028°	Rwy Idg 8001 TDZE 30 Apt Elev 33
---	------------------------	---

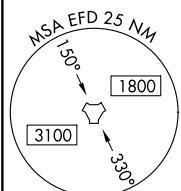
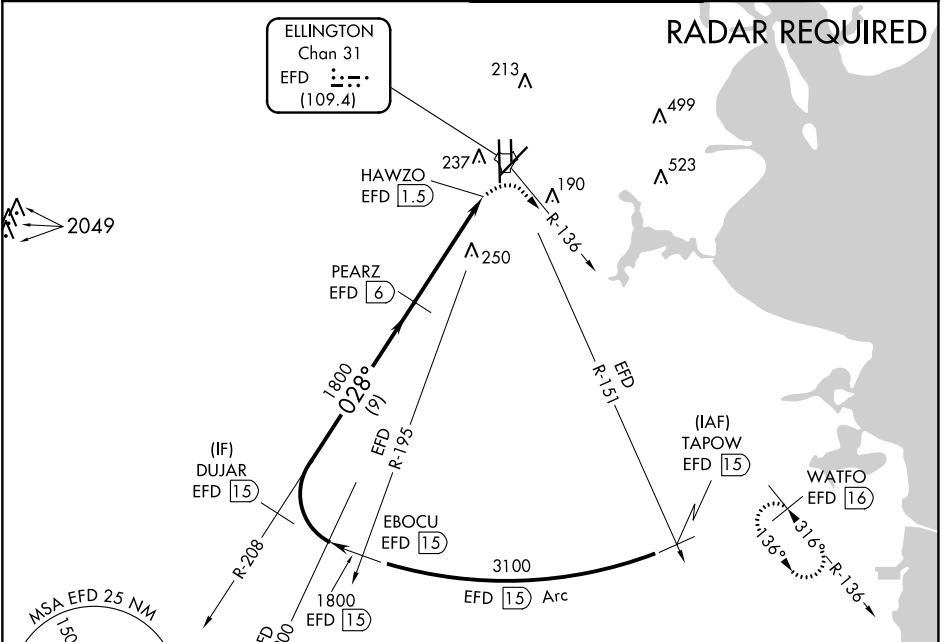
TACAN RWY 4

ELLINGTON (EFD)

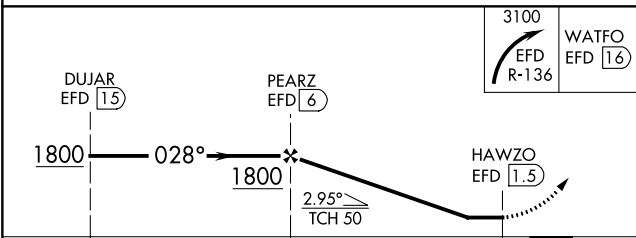
NA Circling NA west of Rwy 17R-35L
Helicopter visibility reduction below 1 SM NA.

MISSED APPROACH: Climbing right turn to 3100 on EFD TACAN R-136 to WATFO/EFD 16 DME and hold.

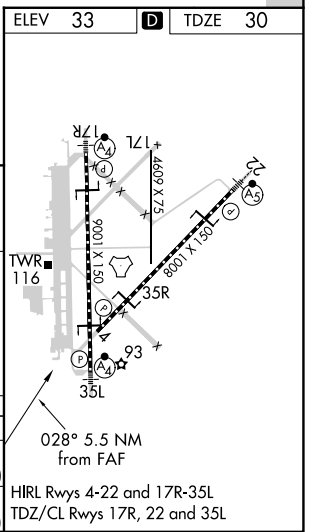
ATIS 135.575 269.9	HOUSTON APP CON 134.45 284.0	ELLINGTON TOWER 126.05 253.5	GND CON 121.6 275.8
------------------------------	--	--	-------------------------------



ESA W/IN 100 NM 16000



CATEGORY	A	B	C	D	E
S-4	520-1¼	490 (500-1¼)		520-1½ 490 (500-1½)	520-1¾ 490 (500-1¾)
CIRCLING	520-1¼	487 (500-1¼)	580-1½ 547 (600-1½)	640-2 607 (700-2)	700-2¼ 667 (700-2¼)



SC-5, 22 FEB 2024 to 21 MAR 2024

SC-5, 22 FEB 2024 to 21 MAR 2024