

NDB DYB 365	APP CRS 067°	Rwy ldg TDZE Apt Elev	5000 53 56
-----------------------	------------------------	-----------------------------	---------------------------------------

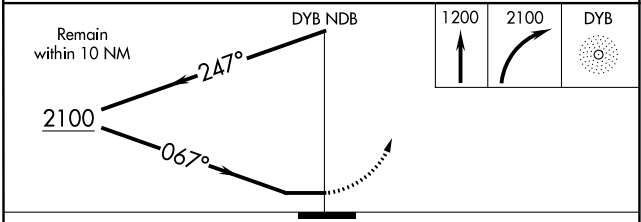
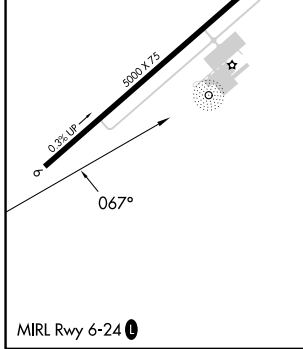
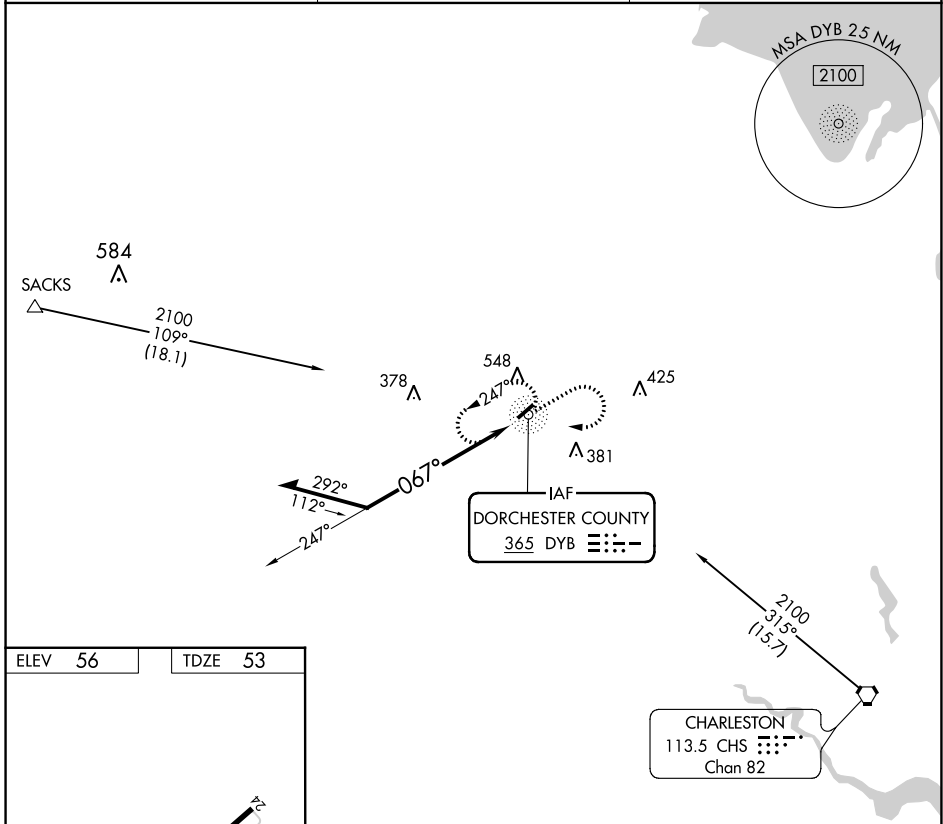
NDB RWY 6

SUMMERVILLE (DYB)

NA Circling Rwy 24 NA at night.
Rwy 6 helicopter visibility reduction below 3/4 SM NA.

MISSED APPROACH: Climb to 1200 then climbing right turn to 2100 direct DYB NDB and hold.

AWOS-3 119.575	CHARLESTON APP CON 120.7 306.925	UNICOM 123.0 (CTAF) 0
--------------------------	--	---------------------------------



CATEGORY	A	B	C	D
S-6	880-1 827 (900-1)	880-1¼ 827 (900-1¼)	880-2½ 827 (900-2½)	NA
C CIRCLING	880-1¼	824 (900-1¼)	880-2½ 824 (900-2½)	NA

SE-2, 22 FEB 2024 to 21 MAR 2024

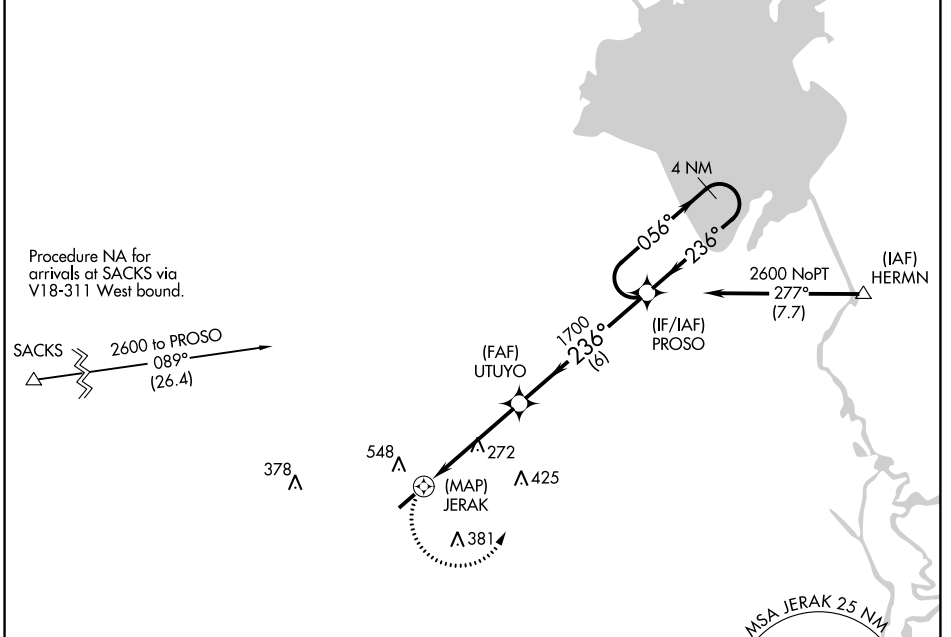
SE-2, 22 FEB 2024 to 21 MAR 2024

APP CRS	Rwy Idg	5000
236°	TDZE	56
	Apt Elev	56

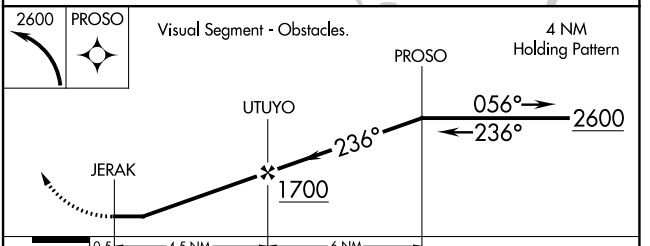
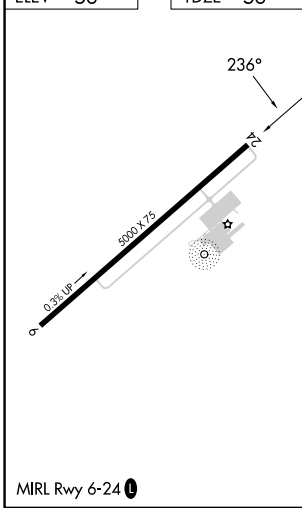
RNAV (GPS) RWY 24

SUMMERVILLE (DYB)

RNP APCH-GPS.		MISSED APPROACH: Climbing left turn to 2600 direct PROSO and hold.
<p>▼ Straight-in/Circling Rwy 24 NA at night. ▲ Rwy 24 helicopter visibility reduction below 1 SM NA.</p>		
AWOS-3 119.575	CHARLESTON APP CON 120.7 306.925	UNICOM 123.0 (CTAF) ①



ELEV 56	TDZE 56
---------	---------



CATEGORY	A	B	C	D
LNAV MDA	540-1	484 (500-1)	540-1 ³ / ₈ 484 (500-1 ³ / ₈)	NA
C CIRCLING	860-1 804 (900-1)	860-1 ¹ / ₄ 804 (900-1 ¹ / ₄)	860-2 ¹ / ₄ 804 (900-2 ¹ / ₄)	NA

SE-2, 22 FEB 2024 to 21 MAR 2024

SE-2, 22 FEB 2024 to 21 MAR 2024

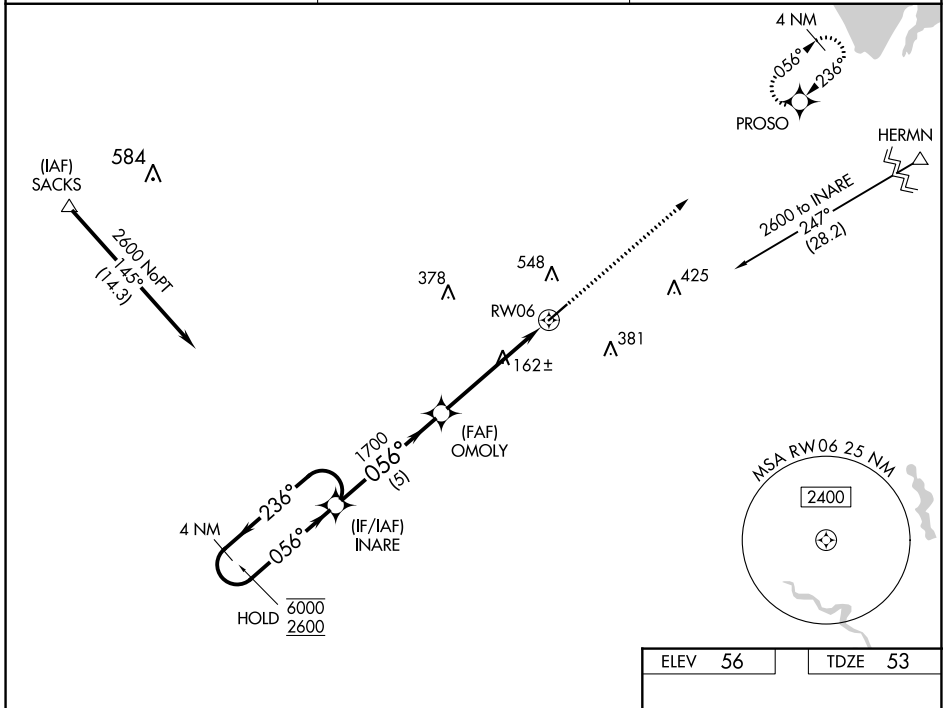
WAAS CH 49018 W06A	APP CRS 056°	Rwy Idg TDZE Apt Elev	5000 53 56
--	------------------------	-----------------------------	---------------------------------------

RNAV (GPS) RWY 6

SUMMERVILLE (DYB)

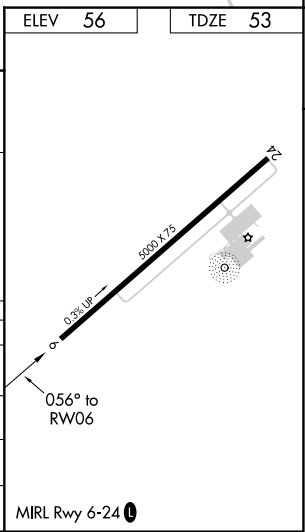
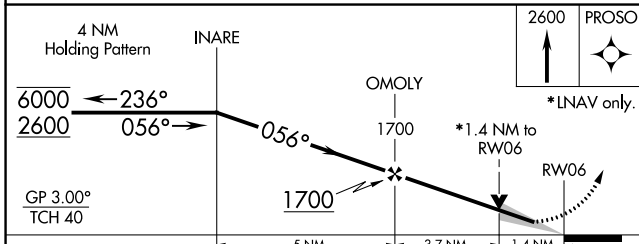
RNP APCH.	MISSED APPROACH: Climb to 2600 direct PROSO and hold.
-----------	---

AWOS-3 119.575	CHARLESTON APP CON 120.7 306.925	UNICOM 123.0 (CTAF)
--------------------------	--	-------------------------------



SE-2, 22 FEB 2024 to 21 MAR 2024

SE-2, 22 FEB 2024 to 21 MAR 2024



CATEGORY	A	B	C	D
LPV DA	253-¾	200 (200-¾)		NA
LNNAV/VNAV DA	477-1¼	424 (500-1¼)		NA
LNNAV MDA	540-1	487 (500-1)	540-1 ⅜ 487 (500-1 ⅜)	NA
C CIRCLING	860-1	804 (900-1)	860-2¼ 804 (900-2¼)	NA