

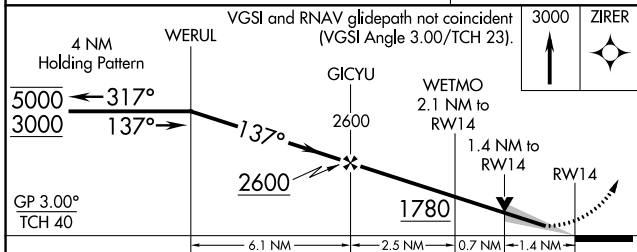
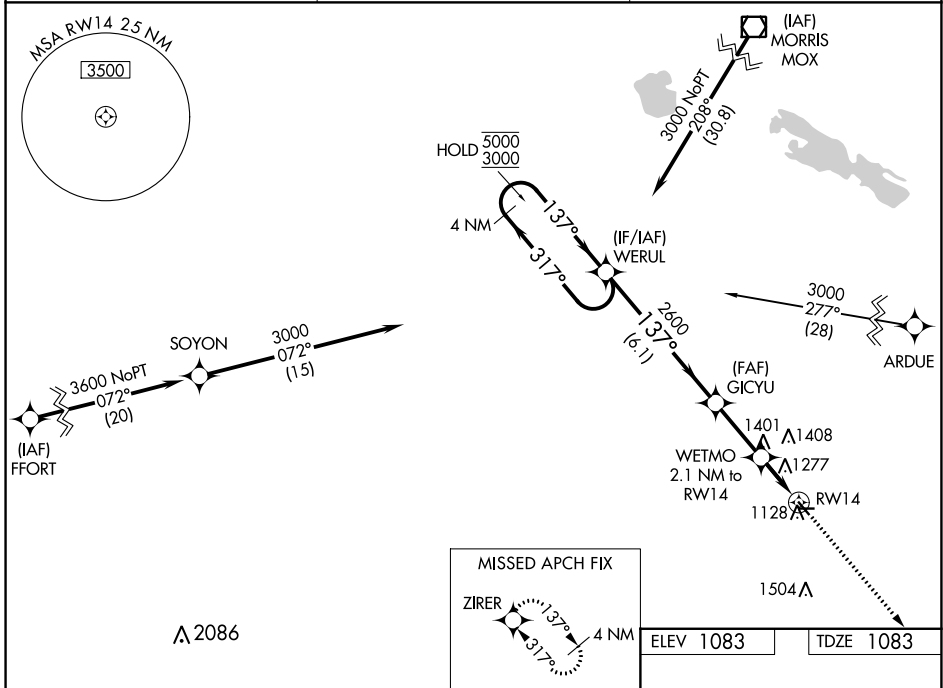
WAAS CH <b>63030</b> <b>W14A</b>	APP CRS <b>137°</b>	Rwy Idg TDZE Apt Elev	<b>3300</b> <b>1083</b> <b>1083</b>
--	------------------------	-----------------------------	---

# RNAV (GPS) RWY 14

LAC QUI PARLE COUNTY (DXX)

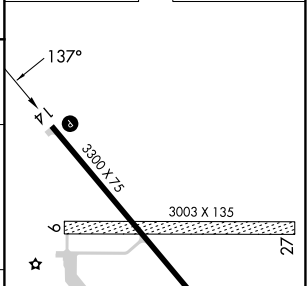
RNP APCH - GPS.	MISSED APPROACH: Climb to 3000 direct ZIRER and hold.
<p>Circling NA to Rwys 9 and 27. For uncompensated Baro-VNAV systems, LNAV/VNAV NA below -17°C or above 54°C.</p>	

AWOS-3 <b>118.975</b>	MINNEAPOLIS CENTER <b>128.5 306.2</b>	UNICOM <b>122.8 (CTAF) 0</b>
--------------------------	--	---------------------------------



ELEV 1083	TDZE 1083
-----------	-----------

CATEGORY	A	B	C	D
LPV DA	1283-1 200 (200-1)			NA
LNAV/VNAV DA	1572-1 <sup>3</sup> / <sub>8</sub> 489 (500-1 <sup>3</sup> / <sub>8</sub> )			NA
LNAV MDA	1540-1	457 (500-1)	1540-1 <sup>3</sup> / <sub>8</sub> 457 (500-1 <sup>3</sup> / <sub>8</sub> )	NA
CIRCLING	1640-1	557 (600-1)	1820-2 737 (800-2)	NA



REIL Rwys 14 and 32 0	MIRL Rwy 14-32 0
-----------------------	------------------

NC-1, 22 FEB 2024 to 21 MAR 2024

NC-1, 22 FEB 2024 to 21 MAR 2024

WAAS CH <b>53530</b> <b>W32A</b>	APP CRS <b>317°</b>	Rwy Idg TDZE Apt Elev	<b>3300</b> <b>1082</b> <b>1083</b>
--	------------------------	-----------------------------	---

# RNAV (GPS) RWY 32

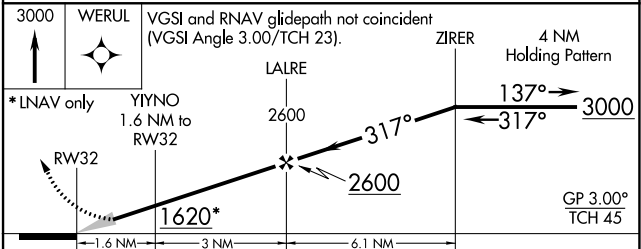
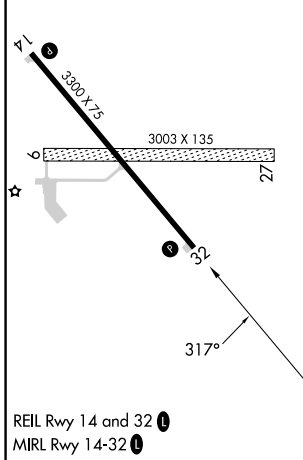
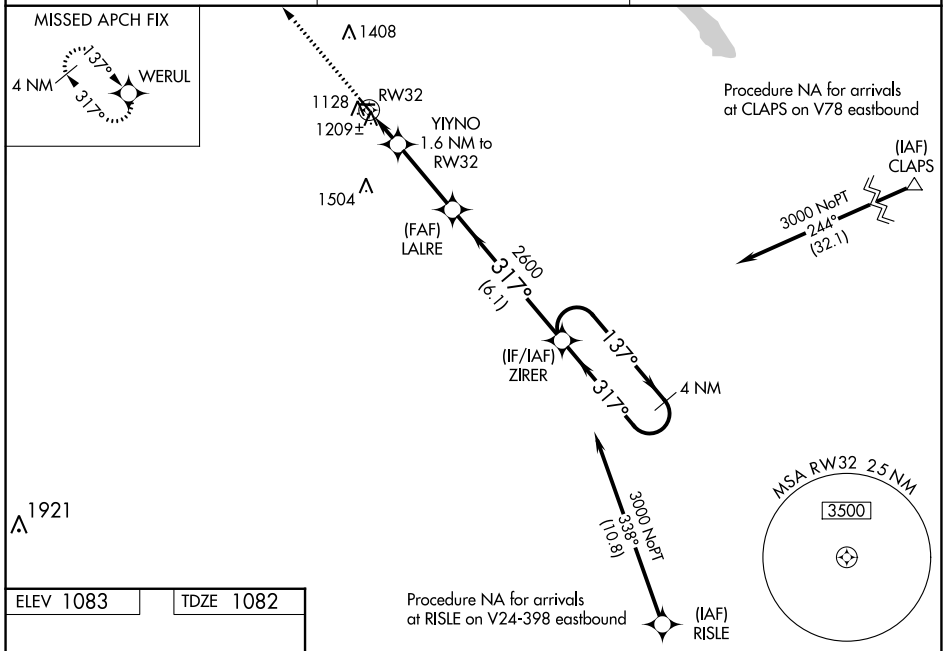
LAC QUI PARLE COUNTY (DXX)

RNP APCH.

Baro-VNAV NA when using Appleton Muni altimeter setting. For uncompensated Baro-VNAV systems, LNAV/VNAV NA below -17°C or above 54°C. When local altimeter setting not received, use Appleton Muni altimeter setting; increase LPV DA to 1329 feet; increase LNAV/VNAV DA to 1409 feet and visibility 1/4 SM; increase all MDAs 60 feet and Circling Cat C visibility 1/2 SM. Circling NA to Rwy 9 and 27.

MISSED APPROACH: Climb to 3000 direct WERUL and hold.

AWOS-3 <b>118.975</b>	MINNEAPOLIS CENTER <b>128.5 306.2</b>	UNICOM <b>122.8 (CTAF)</b>
--------------------------	--	-------------------------------



CATEGORY	A	B	C	D
LPV DA	1282-1 200 (200-1)			NA
LNAV/VNAV DA	1363-1 281 (300-1)			NA
LNAV MDA	1460-1	378 (400-1)	1460-1 1/8 378 (400-1 1/8)	NA
CIRCLING	1640-1	557 (600-1)	1820-2 737 (800-2)	NA

NC-1, 22 FEB 2024 to 21 MAR 2024

NC-1, 22 FEB 2024 to 21 MAR 2024