

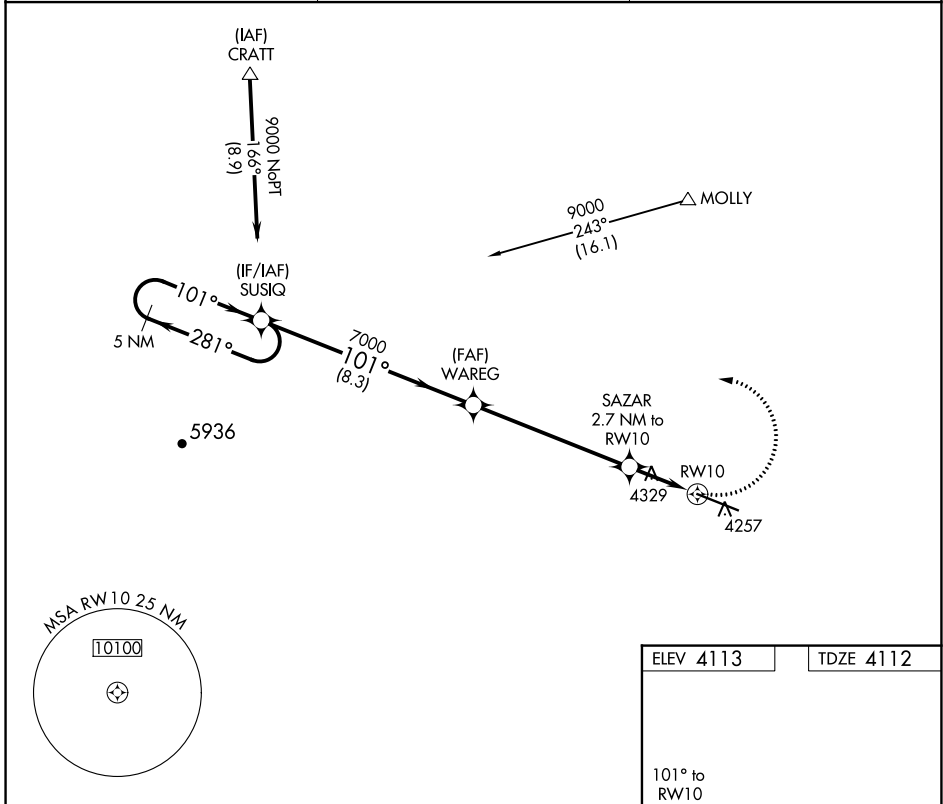
APP CRS	Rwy Idg	9550
101°	TDZE	4112
	Apt Elev	4113

RNAV (GPS) RWY 10

DONA ANA COUNTY INTL JETPORT (DJA)

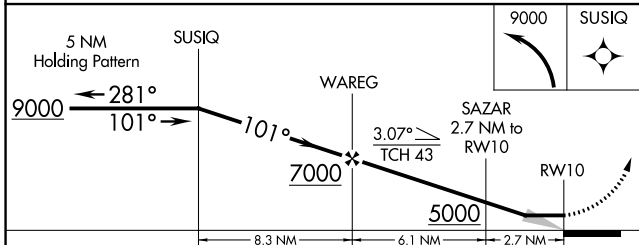
<p>NA DME/DME RNP-0.3 NA. When local altimeter setting not received, use El Paso Intl altimeter setting.</p>	<p>MISSED APPROACH: Climbing left turn to 9000 direct SUSIQ and hold.</p>
---	---

<p>AWOS-3PT 124.175</p>	<p>EL PASO APP CON 119.15</p>	<p>AUNICOM 122.725 (CTAF) 0</p>
------------------------------------	--	--



SW-1, 22 FEB 2024 to 21 MAR 2024

SW-1, 22 FEB 2024 to 21 MAR 2024



ELEV 4113	TDZE 4112
-----------	-----------

101° to RW10
9550 X 100

CATEGORY	A	B	C	D
LNNAV MDA	4700-1	588 (600-1)	4700-1¾	588 (600-1¾)
C CIRCLING	4760-1	647 (700-1)	4760-1¾	4760-2
			647 (700-¾)	647 (700-2)

MIRL Rwy 10-28 0
REIL Rwy 10 and 28 0