

# AIRPORT DIAGRAM

AL-676 (FAA)

DODGE CITY RGNL (DDC)  
DODGE CITY, KANSAS

ASOS  
118.525  
CTAF/UNICOM  
122.7

37°46.5'N

FIELD  
ELEV  
2596



ELEV  
2583

71

148.7°



JANUARY 2020  
ANNUAL RATE OF CHANGE  
0.1° W

NC-2, 22 FEB 2024 to 21 MAR 2024

37°46.0'N

ELEV  
2564

72

669' X 100

0.7% Up

207.3°

FIRE STATION

HANGARS

2700

NWS

TERMINAL

HS 1

4649' X 100

37°45.5'N

RWY 02-20  
PCN 9 F/D/X/T  
S-24  
RWY 14-32  
PCN 32 F/D/X/T  
S-81, D-103, 2D-168

ELEV  
2595

2

027.2°

ELEV  
2587

32

99°58.0'W

99°57.5'W

NC-2, 22 FEB 2024 to 21 MAR 2024

# AIRPORT DIAGRAM

DODGE CITY, KANSAS  
DODGE CITY RGNL (DDC)

## HOT SPOTS

An "airport surface hot spot" is a location on an aerodrome movement area with a history or potential risk of collision or runway incursion, and where heightened attention by pilots/drivers is necessary.

A "hot spot" is a runway safety related problem area on an airport that presents increased risk during surface operations. Typically it is a complex or confusing taxiway/taxiway or taxiway/runway intersection. The area of increased risk has either a history of or potential for runway incursions or surface incidents, due to a variety of causes, such as but not limited to: airport layout, traffic flow, airport marking, signage and lighting, situational awareness, and training. Hot spots are depicted on airport diagrams as open circles or polygons designated as "HS 1", "HS 2", etc. and tabulated in the list below with a brief description of each hot spot. Hot spots will remain charted on airport diagrams until such time the increased risk has been reduced or eliminated.

CITY/AIRPORT	HOT SPOT	DESCRIPTION*
DODGE CITY, KS DODGE CITY RGNL (DDC)	HS 1	Ramp is in close proximity to rwsy.
GARDEN CITY, KS GARDEN CITY RGNL (GCK)	HS 1	Rwy 17-35 in close proximity to ramp non-movement area at Twy C.
	HS 2	Twy A leads to int or Rwy 30.
GRAND ISLAND, NE CENTRAL NEBRASKA RGNL (GRI)	HS 1	Twy B crosses Rwy 17.
	HS 2	Twy C crosses Rwy 17 at the ramp.
HUTCHINSON, KS HUTCHINSON RGNL (HUT)	HS 1	Twy A and Twy C at Rwy 17-35.
	HS 2	Rwy 13-31 at Twy B.
KEARNEY, NE KEARNEY RGNL (EAR)	HS 1	Limited visibility between Rwy 13 departures and Rwy 18 traffic.
	HS 2	Int in close proximity to ramp.
LIBERAL, KS LIBERAL MID-AMERICA RGNL (LBL)	HS 1	Twy C intersects Rwy 17-35 immediately upon leaving ramp area.
LINCOLN, NE LINCOLN (LNK)	HS 1	Complex int of rwsy and twys.
	HS 2	Apch holding position on twy near run up area.
MANHATTAN, KS MANHATTAN RGNL (MHK)	HS 1	Twy A intersects with Rwy 13-31.
OLATHE, KS JOHNSON COUNTY EXEC (OJC)	HS 1	Unusual holding position.
OLATHE, KS NEW CENTURY AIRCENTER (IXD)	HS 1	Complex twy/rwy int in area of limited twr vis.
OMAHA, NE EPPLEY AIRFIELD (OMA)	HS 1	Complex twy int.
	HS 2	Intersection of Twy A and Twy F is in close proximity to Rwy 18-36 and Rwy 14R-32L.
OMAHA, NE OFFUTT AFB (OFF)	HS 1	Twy M-S/M-N int used by aircraft support vehicles crossing rwy.
	HS 2	Airfield access gate enters directly into twr controlled movement area.
SALINA, KS SALINA RGNL (SLN)	HS 1	Twy E int departures Rwy 17-35.
	HS 2	Twy B intersects Rwy 12-30 and Rwy 17-35. Close proximity rwy boundary hold markings.

(SEE CONTINUATION PAGE FOR MORE LISTINGS)

HOT SPOTS

(CONTINUED)

CITY/AIRPORT	HOT SPOT	DESCRIPTION*
TOPEKA, KS		
TOPEKA RGNL (FOE)	HS 1	Twy A turns southwest to access the apch end of Rwy 03.
	HS 2	Twy A turns south to apch end Rwy 03.
WICHITA, KS		
WICHITA DWIGHT D EISENHOWER NTL (ICT)	HS 1	Int of Twy B1, Twy K and Twy B at Rwy 14-32.

\*See appropriate Chart Supplement HOT SPOT table for additional information.

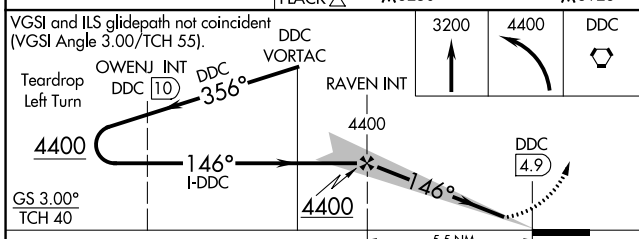
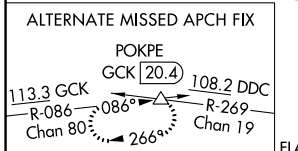
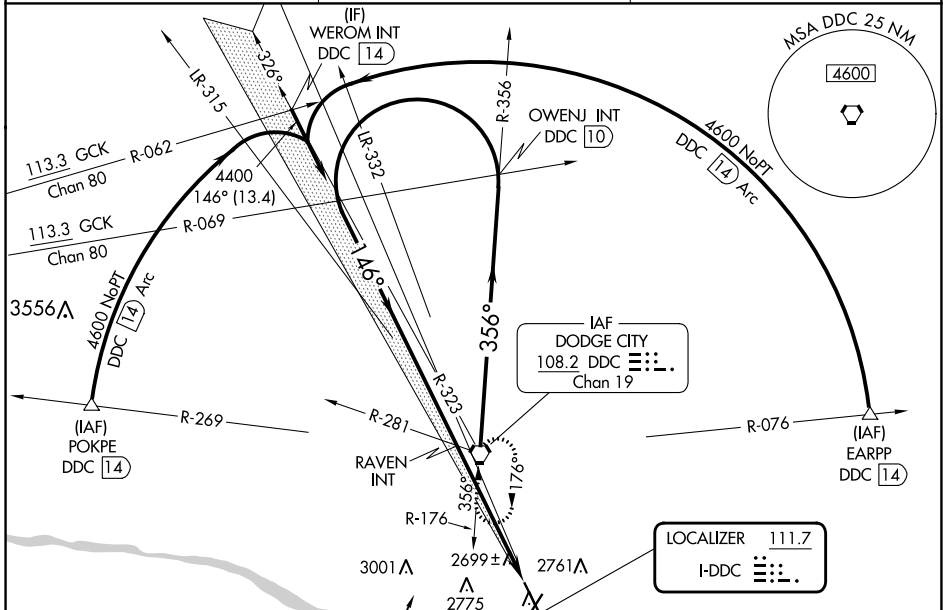
LOC I- <b>DDC</b> <b>111.7</b>	APP CRS <b>146°</b>	Rwy ldg TDZE Apt Elev <b>6329</b> <b>2586</b> <b>2596</b>
-----------------------------------	------------------------	--

# ILS or LOC RWY 14

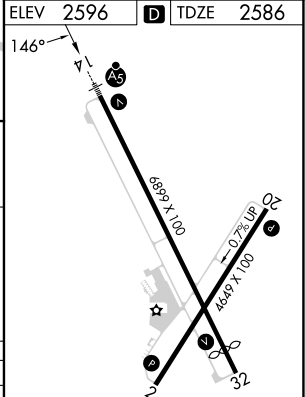
DODGE CITY RGNL (DDC)

<p><b>A</b></p> <p>For inop ALS, increase S-LOC 14 Cat C/D visibility to 1 SM.</p>	<p>MALSR</p>	<p>MISSED APPROACH: Climb to 3200 then climbing left turn to 4400 direct DDC VORTAC and hold.</p>

ASOS <b>118.525</b>	KANSAS CITY CENTER <b>125.2 285.425</b>	UNICOM <b>122.7 (CTAF)</b>
------------------------	--	-------------------------------



ELEV 2596	TDZE 2586
-----------	-----------



CATEGORY	A	B	C	D
S-ILS 14	2786-½ 200 (200-½)			
S-LOC 14	2960-½ 374 (400-½)	2960-⅝ 374 (400-⅝)		
CIRCLING	3040-1 444 (500-1)	3080-1 484 (500-1)	3320-2 724 (800-2)	3320-2¼ 724 (800-2¼)

REIL Rwys 2, 20 and 32	
MRL Rwy 14-32 and 2-20	
FAF to MAP 5.5 NM	
Knots	60 90 120 150 180
Min:Sec	5:30 3:40 2:45 2:12 1:50


NC-2, 22 FEB 2024 to 21 MAR 2024

NC-2, 22 FEB 2024 to 21 MAR 2024

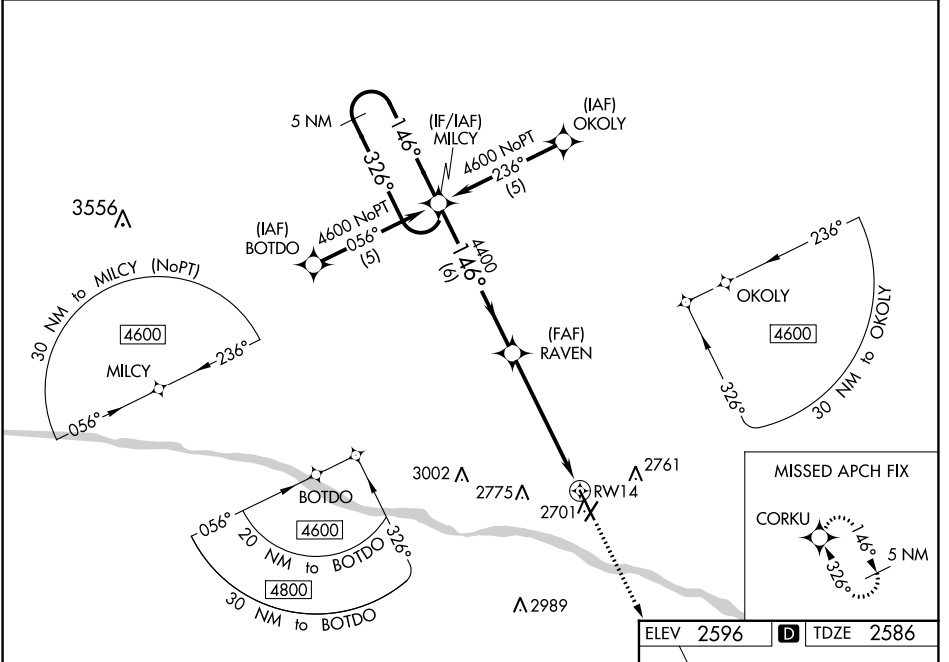
WAAS CH <b>65609</b> <b>W14A</b>	APP CRS <b>146°</b>	Rwy Idg TDZE Apt Elev	<b>6329</b> <b>2586</b> <b>2596</b>
--	------------------------	-----------------------------	---

# RNAV (GPS) RWY 14

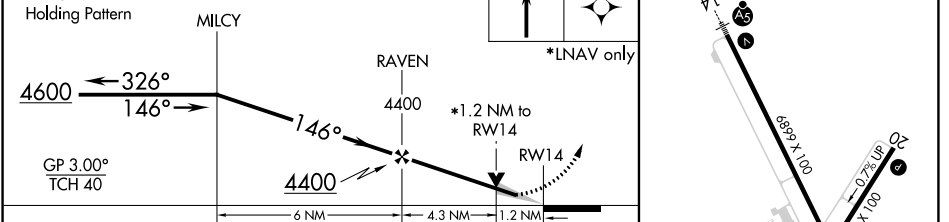
DODGE CITY RGNL (DDC)

<p><b>⚠</b> DME/DME RNP-0.3 NA. For uncompensated Baro-VNAV systems, LNAV/VNAV NA below -19°C (-2°F) or above 54°C (130°F). For inop ALS, increase LPV all Cats visibility to ¾ SM and LNAV/VNAV all Cats visibility to 1¾ SM.</p>	<p>MALSR</p> 	<p>MISSED APPROACH: Climb to 4600 direct CORKU and hold.</p>

<p>ASOS <b>118.525</b></p>	<p>KANSAS CITY CENTER <b>125.2 285.425</b></p>	<p>UNICOM <b>122.7 (CTAF) 1</b></p>
--------------------------------	--	---



ELEV	2596	D	TDZE	2586
------	------	---	------	------



CATEGORY	A	B	C	D
LPV DA		2836-½	250 (300-½)	
LNAV/VNAV DA		2991-1	405 (400-1)	
LNAV MDA	3020-½	434 (500-½)	3020-¾	434 (500-¾)
<b>C</b> CIRCLING	3040-1 444 (500-1)	3080-1 484 (500-1)	3320-2 724 (800-2)	3320-2¼ 724 (800-2¼)

REIL Rwy 2s, 20 and 32 1  
MIRL Rwy 14-32 and 2-20 1

NC-2, 22 FEB 2024 to 21 MAR 2024

NC-2, 22 FEB 2024 to 21 MAR 2024

WAAS CH <b>73040</b> <b>W02A</b>	APP CRS <b>024°</b>	Rwy Idg TDZE <b>4649</b> 2596 Apt Elev <b>2596</b>
--	------------------------	---

# RNAV (GPS) RWY 2

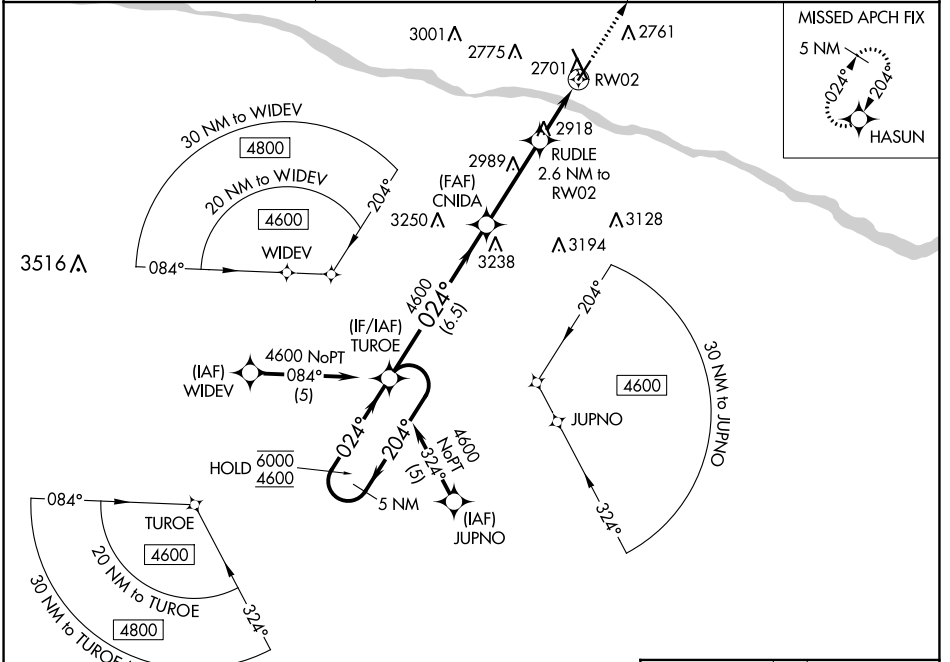
DODGE CITY RGNL (DDC)

RNP APCH - GPS.

**⚠** Rwy 2 helicopter visibility reduction below 3/4 SM NA. For uncompensated Baro-VNAV systems, LNAV/VNAV NA below -9°C or above 54°C.

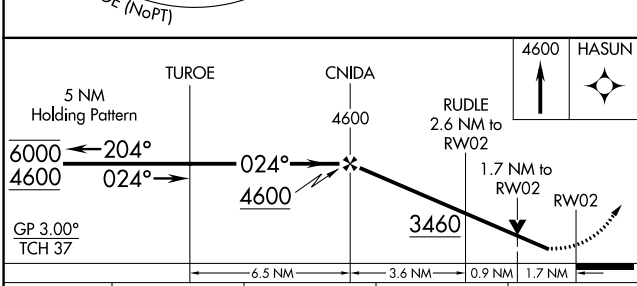
MISSED APPROACH: Climb to 4600 direct HASUN and hold.

ASOS <b>118.525</b>	KANSAS CITY CENTER <b>125.2 285.425</b>	UNICOM <b>122.7 (CTAF) 0</b>
------------------------	--	---------------------------------



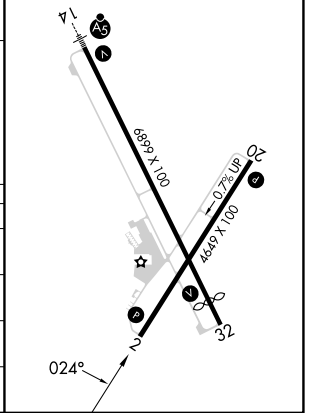
NC-2, 22 FEB 2024 to 21 MAR 2024

NC-2, 22 FEB 2024 to 21 MAR 2024



ELEV 2596 **D** TDZE 2596

REIL Rwy 2, 20, and 32 **L**  
MIRL Rwy 14-32 and 2-20 **L**



CATEGORY	A	B	C	D
LPV DA	2846-1 250 (300-1)			NA
LNAV/VNAV DA	2883-1 287 (300-1)			NA
LNAV MDA	3180-1 584 (600-1)		3180-1 3/4 584 (600-1 3/4)	NA
<b>C</b> CIRCLING	3180-1 584 (600-1)		3320-2 724 (800-2)	NA

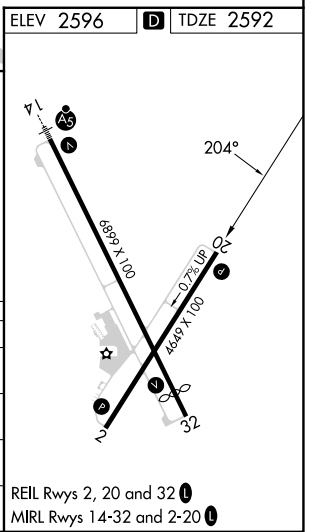
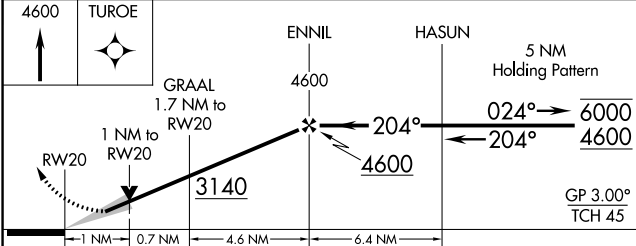
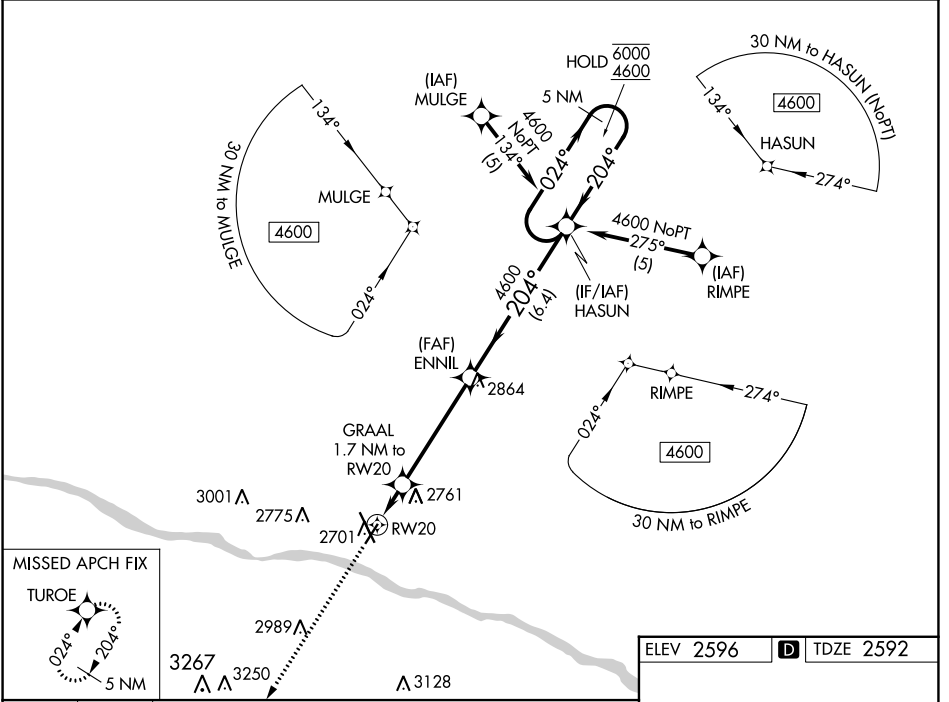
WAAS CH <b>78440</b> <b>W20A</b>	APP CRS <b>204°</b>	Rwy Idg TDZE Apt Elev	<b>4649</b> <b>2592</b> <b>2596</b>
--	------------------------	-----------------------------	---

# RNAV (GPS) RWY 20

DODGE CITY RGNL (DDC)

RNP APCH - GPS. ▲ For uncompensated Baro-VNAV systems, LNAV/VNAV NA below -9°C or above 54°C.	MISSED APPROACH: Climb to 4600 direct TUROE and hold.
--	---

ASOS <b>118.525</b>	KANSAS CITY CENTER <b>125.2 285.425</b>	UNICOM <b>122.7 (CTAF) 0</b>
------------------------	--	---------------------------------



CATEGORY	A	B	C	D
LPV DA	2842-1	250 (300-1)		NA
LNAV/VNAV DA	2842-1	250 (300-1)		NA
LNAV MDA	2920-1	328 (400-1)		NA
<b>C</b> CIRCLING	3040-1 444 (500-1)	3080-1 484 (500-1)	3320-2 724 (800-2)	NA

NC-2, 22 FEB 2024 to 21 MAR 2024

NC-2, 22 FEB 2024 to 21 MAR 2024

WAAS CH <b>81938</b> <b>W32A</b>	APP CRS <b>326°</b>	Rwy Idg TDZE Apt Elev	<b>6329</b> <b>2591</b> <b>2596</b>
--	------------------------	-----------------------------	---

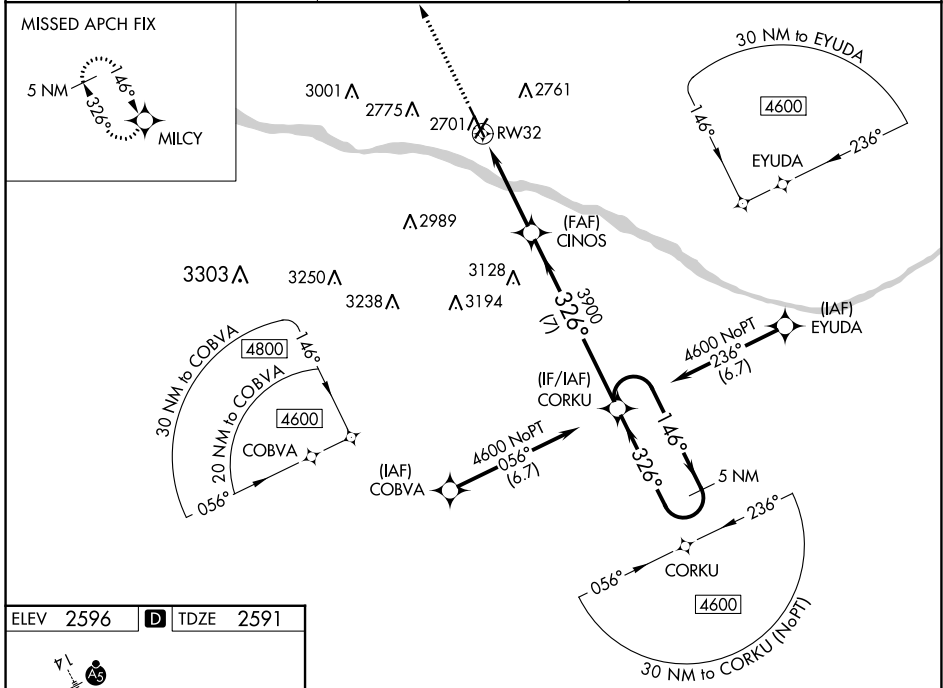
# RNAV (GPS) RWY 32

DODGE CITY RGNL (DDC)

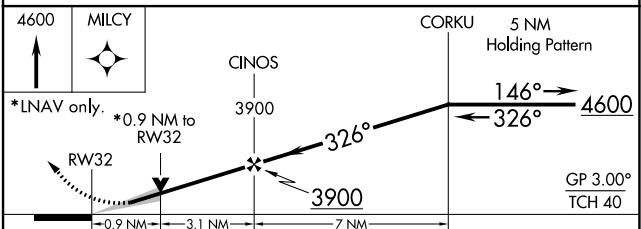
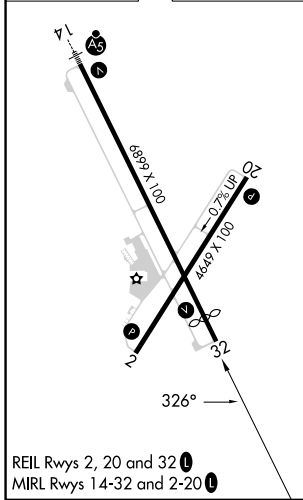
**⚠** DME/DME RNP-0.3 NA. Baro-VNAV and VDP NA when using Garden City altimeter setting. For uncompensated Baro-VNAV systems, LNAV/VNAV NA below -19°C (-2°F) or above 54°C (130°F). When local altimeter setting not received, use Garden City altimeter setting: increase LPV DA to 2919 feet and all visibilities 3/8 miles, LNAV/VNAV DA to 2969 feet and all visibilities 3/8 mile; increase all MDA 140 feet and LNAV visibility Cat C and D 3/8 mile and Circling visibility Cat C and D 1/2 mile.

**MISSED APPROACH:**  
Climb to 4600 direct MILCY and hold.

ASOS <b>118.525</b>	KANSAS CITY CENTER <b>125.2 285.425</b>	UNICOM <b>122.7 (CTAF) 0</b>
------------------------	--	---------------------------------



ELEV 2596	<b>D</b> TDZE 2591
-----------	--------------------



CATEGORY	A	B	C	D
LPV DA		2791-3/4	200 (200-3/4)	
LNAV/VNAV DA		2841-7/8	250 (300-7/8)	
LNAV MDA		2920-1	329 (400-1)	
<b>C</b> CIRCLING	3040-1 444 (500-1)	3080-1 484 (500-1)	3320-2 724 (800-2)	3320-2 1/4 724 (800-2 1/4)

NC-2, 22 FEB 2024 to 21 MAR 2024

NC-2, 22 FEB 2024 to 21 MAR 2024



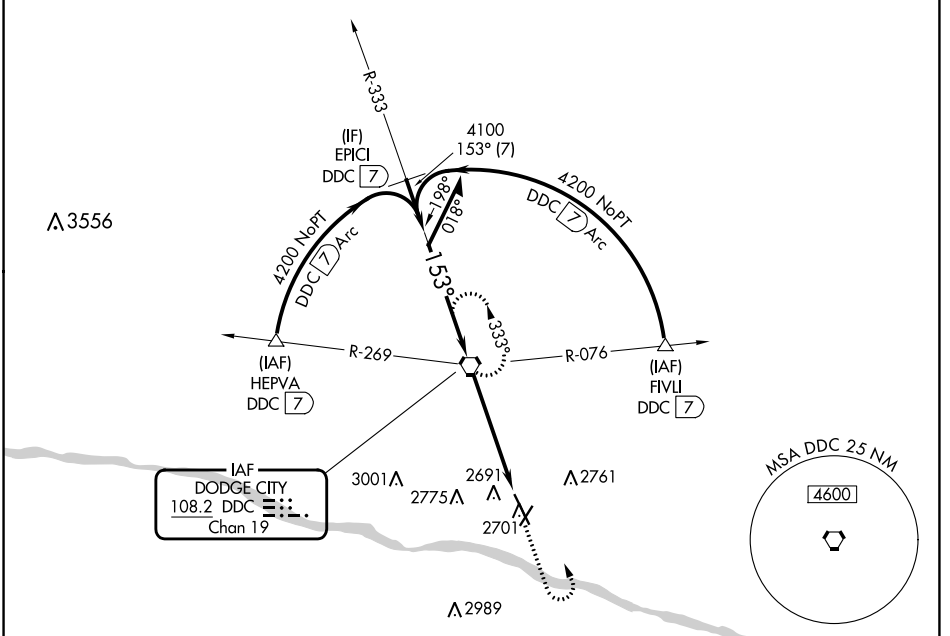
VORTAC DDC <b>108.2</b> Chan 19	APP CRS <b>153°</b>	Rwy Idg TDZE Apt Elev	<b>6329</b> <b>2586</b> <b>2596</b>
---------------------------------------	------------------------	-----------------------------	---

# VOR RWY 14

DODGE CITY RGNL (DDC)

		MISSED APPROACH: Climb to 4200 then left turn direct DDC VORTAC and hold.

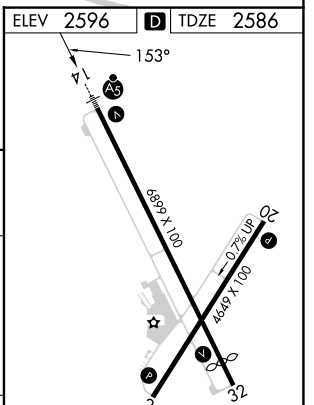
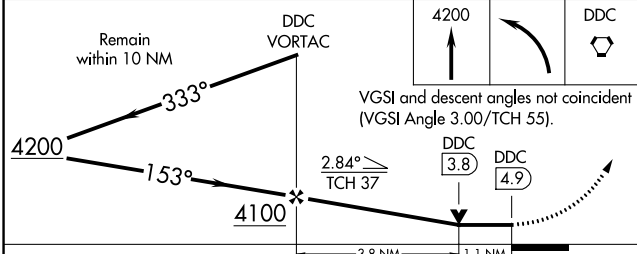
ASOS <b>118.525</b>	KANSAS CITY CENTER <b>125.2 285.425</b>	UNICOM <b>122.7 (CTAF)</b>
------------------------	--	-------------------------------



NC-2, 22 FEB 2024 to 21 MAR 2024

NC-2, 22 FEB 2024 to 21 MAR 2024

ELEV 2596	TDZE 2586
-----------	-----------



CATEGORY	A	B	C	D
S-14	3000-1/2 414 (500-1/2)		3000-3/4 414 (500-3/4)	
CIRCLING	3040-1 444 (500-1)	3080-1 484 (500-1)	3320-2 724 (800-2)	3320-2 1/4 724 (800-2 1/4)

REIL Rwys 2, 20 and 32	
MIRL Rwys 14-32 and 2-20	
FAF to MAP 4.9 NM	
Knots	60 90 120 150 180
Min:Sec	4:54 3:16 2:27 1:58 1:38

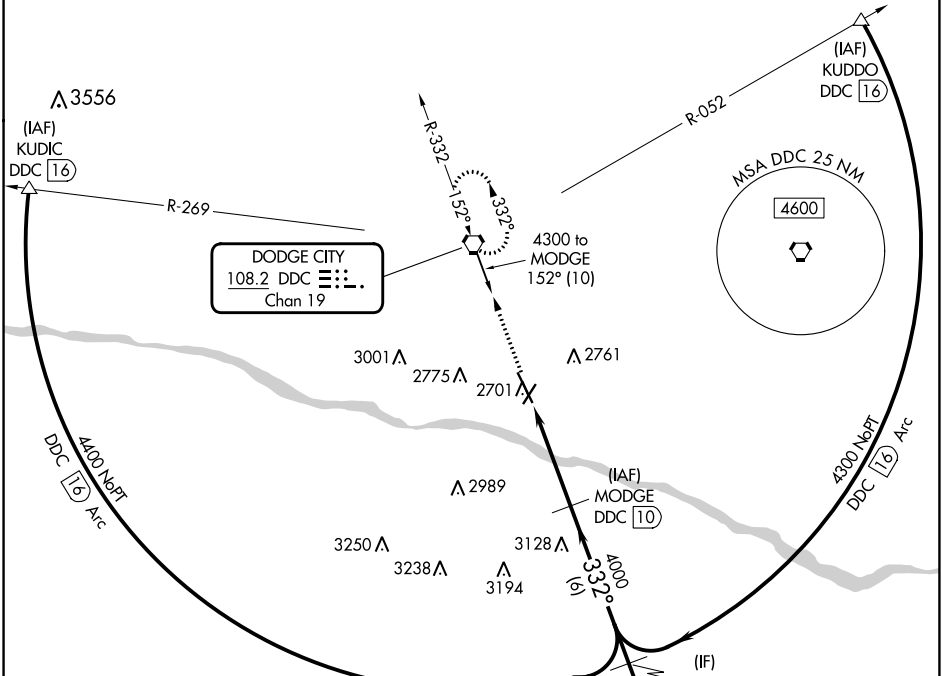
VORTAC DDC <b>108.2</b> Chan 19	APP CRS <b>332°</b>	Rwy Idg TDZE Apt Elev	<b>6329</b> <b>2591</b> <b>2596</b>
---------------------------------------	------------------------	-----------------------------	---

# VOR RWY 32

DODGE CITY RGNL (DDC)

DME required.	MISSED APPROACH: Climb to 4300 direct DDC VORTAC and hold, continue climb-in-hold to 4300
---------------	---

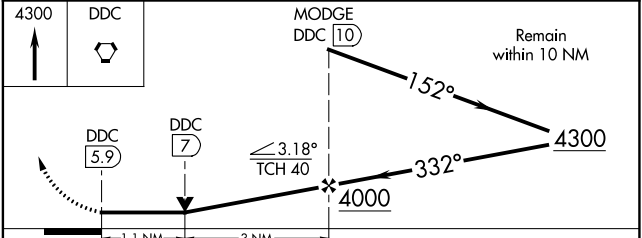
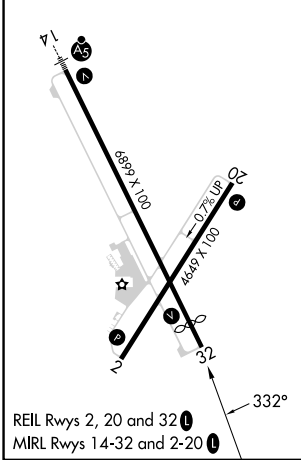
ASOS <b>118.525</b>	KANSAS CITY CENTER <b>125.2 285.425</b>	UNICOM <b>122.7</b> (CTAF) <b>0</b>
------------------------	--	--



NC-2, 22 FEB 2024 to 21 MAR 2024

NC-2, 22 FEB 2024 to 21 MAR 2024

ELEV 2596	<b>D</b>	TDZE 2591
-----------	----------	-----------



CATEGORY	A	B	C	D
S-32	2980-1	389 (400-1)	2980-1½	389 (400-1½)
<b>CIRCLING</b>	3040-1 444 (500-1)	3080-1 484 (500-1)	3320-2 724 (800-2)	3320-2¼ 724 (800-2¼)

INSTRUMENT APPROACH PROCEDURE CHARTS

**A** IFR ALTERNATE AIRPORT MINIMUMS

Pilots must review the IFR Alternate Minimums Notes to determine alternate airport suitability.

**A**NA designation on the approach chart means that pilots may not use that approach as an alternate due to unmonitored facility, absence of weather reporting service, or lack of adequate navigation coverage. Approaches with the **A**NA designation are not listed in this section. **A** designation on the approach chart indicates that the approach procedure has non-standard minimums (for aircraft other than helicopters) or restrictions (for all users) for its use as an alternate.

Alternate Minima (ref: 14 CFR 91.169)

	Precision Approach	Non-Precision Approach
Standard	<b>600-2</b>	<b>800-2</b>
<b>A</b> Non-Standard or restrictions	As indicated below	As indicated below
Helicopters	For the selected approach: Ceiling: 200' above published ceiling Visibility: the greater of 1 SM visibility or the published visibility	
US Military (USA/USN/USAF)	See Service Regulations	

**Note:** For alternate airport flight planning purposes, precision approach operations include: ILS, PAR, and GLS, and Non-Precision approach operations include: NDB, VOR, LOC, TACAN, LDA, SDF, ASR, RNAV (GPS) and RNAV (RNP).

NAME ALTERNATE MINIMUMS

**ABILENE, KS**

ABILENE  
MUNI (K78).....RNAV (GPS) Rwy 17<sup>1</sup>  
RNAV (GPS) Rwy 35  
VOR-A

Category C, 900-2½.  
<sup>1</sup>NA when local weather not available.

**ALLIANCE, NE**

ALLIANCE MUNI (AIA).....RNAV (GPS) Rwy 8  
RNAV (GPS) Rwy 12  
RNAV (GPS) Rwy 26  
RNAV (GPS) Rwy 30  
VOR Rwy 12  
VOR Rwy 30

NA when local weather not available.  
Category D, 800-2¼.

**AINSWORTH, NE**

AINSWORTH  
RGNL (ANW).....RNAV (GPS) Rwy 13<sup>1</sup>  
RNAV (GPS) Rwy 17<sup>1</sup>  
RNAV (GPS) Rwy 31<sup>1</sup>  
RNAV (GPS) Rwy 35<sup>1</sup>  
VOR Rwy 35<sup>2</sup>

<sup>1</sup>NA when local weather not available.  
<sup>2</sup>Category D, 800-2¼.

NAME ALTERNATE MINIMUMS

**ALBION, NE**

ALBION  
MUNI (BVN).....RNAV (GPS) Rwy 15  
RNAV (GPS) Rwy 33  
NA when local weather not available.

**AUGUSTA, KS**

AUGUSTA  
MUNI (3AU).....RNAV (GPS) Rwy 36  
VOR/DME-A  
NA when local weather not available.

**AURORA, NE**

AURORA MUNI-AL POTTER  
FIELD (AUH).....RNAV (GPS) Rwy 16  
RNAV (GPS) Rwy 34  
VOR-A<sup>1</sup>

NA when local weather not available.  
<sup>1</sup>Category D, 800-2¼.

22 FEB 2024 to 21 MAR 2024

22 FEB 2024 to 21 MAR 2024

NAME ALTERNATE MINIMUMS

**BEATRICE, NE**

BEATRICE MUNI (BIE).....RNAV (GPS) Rwy 14<sup>1</sup>  
RNAV (GPS) Rwy 18<sup>1</sup>  
RNAV (GPS) Rwy 32<sup>1</sup>  
RNAV (GPS) Rwy 36<sup>1</sup>  
VOR Rwy 18<sup>2</sup>  
VOR Rwy 36<sup>1</sup>

NA when local weather not available.  
<sup>1</sup>Category D, 800-2½.  
<sup>2</sup>Categories A, B, 900-2; Category C, 900-2½;  
Category D, 900-2¾.

**BLAIR, NE**

BLAIR EXEC (BTA).....RNAV (GPS) Rwy 13  
RNAV (GPS) Rwy 31

NA when local weather not available.

**BROKEN BOW, NE**

BROKEN BOW MUNI/KEITH  
GLAZE FIELD (BBW).....RNAV (GPS) Rwy 14  
RNAV (GPS) Rwy 32  
VOR Rwy 14  
VOR/DME Rwy 32

NA when local weather not available.

**BURLINGTON, KS**

COFFEY COUNTY (UKL).....RNAV (GPS) Rwy 18  
RNAV (GPS) Rwy 36

NA when local weather not available.  
Category C, 800-2¼.

**CHADRON, NE**

CHADRON MUNI (CDR).....ILS or LOC Rwy 3<sup>1</sup>  
NDB Rwy 21<sup>2</sup>  
RNAV (GPS) Rwy 3<sup>2</sup>  
RNAV (GPS) Rwy 12  
RNAV (GPS) Rwy 21<sup>2</sup>  
RNAV (GPS) Rwy 30

NA when local weather not available.  
<sup>1</sup>LOC, Category D, 1000-3.  
<sup>2</sup>Category D, 1000-3.

**CHANUTE, KS**

CHANUTE MARTIN  
JOHNSON (CNU).....RNAV (GPS) Rwy 36  
VOR-A

NA when local weather not available.

**COFFEYVILLE, KS**

COFFEYVILLE  
MUNI (CFV).....RNAV (GPS) Rwy 17  
RNAV (GPS) Rwy 35<sup>1</sup>

Category D, 800-2½.  
<sup>1</sup>NA when local weather not available.

**COLBY, KS**

SHALZ FLD (CBK).....RNAV (GPS) Rwy 17  
RNAV (GPS) Rwy 35

NA when local weather not available.

NAME ALTERNATE MINIMUMS

**COLDWATER, KS**

COMANCHE  
COUNTY (3K8).....RNAV (GPS) Rwy 17  
RNAV (GPS) Rwy 35

NA when local weather not available.  
Category C, 900-2½.

**COLUMBUS, NE**

COLUMBUS  
MUNI (OLU).....VOR Rwy 14  
Category D, 800-2¼.

**CONCORDIA, KS**

BLOSSER MUNI (CNK).....RNAV (GPS) Rwy 18  
RNAV (GPS) Rwy 36

NA when local weather not available.

**DODGE CITY, KS**

DODGE CITY  
RGNL (DDC).....ILS or LOC Rwy 14<sup>13</sup>  
RNAV (GPS) Rwy 2<sup>3</sup>  
RNAV (GPS) Rwy 14<sup>2</sup>  
RNAV (GPS) Rwy 20<sup>3</sup>  
RNAV (GPS) Rwy 32<sup>23</sup>  
VOR Rwy 14<sup>23</sup>  
VOR Rwy 32<sup>23</sup>

<sup>1</sup>LOC, Category D, 800-2¼.  
<sup>2</sup>Category D, 800-2¼.  
<sup>3</sup>NA when local weather not available.

**ELKHART, KS**

ELKHART-MORTON  
COUNTY (EHA).....RNAV (GPS) Rwy 4  
RNAV (GPS) Rwy 17  
RNAV (GPS) Rwy 22  
RNAV (GPS) Rwy 35

NA when local weather not available.

**ELLSWORTH, KS**

ELLSWORTH  
MUNI (9K7).....RNAV (GPS) Rwy 17  
RNAV (GPS) Rwy 35

NA when local weather not available.  
Category C, 1000-2¾.

**FREMONT, NE**

FREMONT MUNI (FET).....RNAV (GPS) Rwy 14  
RNAV (GPS) Rwy 32

NA when local weather not available.  
Category C, 900-2½.

**NAME ALTERNATE MINIMUMS**

**GARDEN CITY, KS**

GARDEN CITY  
RGNL (GCK).....**ILS or LOC Rwy 35**  
**RNAV (GPS) Rwy 12**  
**RNAV (GPS) Rwy 17**  
**RNAV (GPS) Rwy 30**  
**RNAV (GPS) Rwy 35**  
**VOR/DME Rwy 17**  
**VOR/DME Rwy 30**  
**VOR Rwy 35**

NA when local weather not available.

**GOODLAND, KS**

RENNER FLD/GOODLAND  
MUNI (GLD).....**ILS or LOC Rwy 30**  
**RNAV (GPS) Rwy 12**  
**RNAV (GPS) Rwy 23**  
**RNAV (GPS) Rwy 30**  
**VOR Rwy 30**

NA when local weather not available.

**GORDON, NE**

GORDON MUNI (GRN).....**NDB Rwy 22**  
Categories A, B, 900-2.

**GRAND ISLAND, NE**

CENTRAL NEBRASKA  
RGNL (GRI).....**ILS or LOC Rwy 35<sup>1</sup>**  
**LOC/DME BC Rwy 17<sup>2</sup>**  
**RNAV (GPS) Rwy 13<sup>2</sup>**  
**RNAV (GPS) Rwy 17<sup>2</sup>**  
**RNAV (GPS) Rwy 31<sup>2</sup>**  
**RNAV (GPS) Rwy 35<sup>2</sup>**  
**VOR Rwy 13<sup>2</sup>**  
**VOR Rwy 17<sup>2</sup>**  
**VOR/DME Rwy 31<sup>2</sup>**  
**VOR/DME Rwy 35<sup>2</sup>**

NA when local weather not available.

<sup>1</sup>LOC, Category D, 800-2¼.

<sup>2</sup>Category D, 800-2¼.

**GRANT, NE**

GRANT MUNI (GGF).....**NDB Rwy 33**  
**RNAV (GPS) Rwy 15**  
**RNAV (GPS) Rwy 33**  
**VOR/DME Rwy 15**

NA when local weather not available.

**GREAT BEND, KS**

GREAT BEND  
MUNI (GBD) .....**RNAV (GPS) Rwy 17**  
**RNAV (GPS) Rwy 35**

NA when local weather not available.

Category D, 800-2½.

**HASTINGS, NE**

HASTINGS MUNI (HSI).....**RNAV (GPS) Rwy 4**  
**RNAV (GPS) Rwy 14**  
**RNAV (GPS) Rwy 32**  
**VOR Rwy 32**

NA when local weather not available.

**NAME ALTERNATE MINIMUMS**

**HAYS, KS**

HAYS RGNL (HYS).....**RNAV (GPS) Rwy 4**  
**RNAV (GPS) Rwy 16**  
**RNAV (GPS) Rwy 22**  
**RNAV (GPS) Rwy 34**  
**VOR Rwy 16**  
**VOR Rwy 34**  
**VOR/DME Rwy 16**  
**VOR/DME Rwy 34**

NA when local weather not available.

Category D, 800-2¼.

**HEBRON, NE**

HEBRON MUNI (HJH).....**RNAV (GPS) Rwy 12**  
NA when local weather not available.

**HILL CITY, KS**

HILL CITY MUNI (HLC).....**RNAV (GPS) Rwy 18**  
**RNAV (GPS) Rwy 36**

NA when local weather not available.

**HOLDREGE, NE**

BREWSTER FLD (HDE).....**RNAV (GPS) Rwy 18<sup>1</sup>**  
**RNAV (GPS) Rwy 36<sup>1</sup>**  
**VOR-A<sup>2</sup>**

NA when local weather not available.

<sup>1</sup>Category D, 800-2¼.

<sup>2</sup>Category C, 800-2¼; Category D, 800-2½.

**HUGOTON, KS**

HUGOTON  
MUNI (HQG).....**RNAV (GPS) Rwy 2**  
**RNAV (GPS) Rwy 20**

NA when local weather not available.

Category C, 900-2½.

**HUTCHINSON, KS**

HUTCHINSON  
RGNL (HUT).....**ILS or LOC Rwy 13<sup>12</sup>**  
**LOC BC Rwy 31<sup>13</sup>**  
**NDB Rwy 13<sup>3</sup>**  
**RNAV (GPS) Rwy 4<sup>4</sup>**  
**RNAV (GPS) Rwy 13<sup>34</sup>**  
**RNAV (GPS) Rwy 31<sup>3</sup>**  
**RNAV (GPS) Rwy 35<sup>4</sup>**

<sup>1</sup>NA when control tower closed.

<sup>2</sup>ILS, Category C, 700-2, Category D, 1200-3;

LOC, Category D, 1200-3.

<sup>3</sup>Category D, 1200-3.

<sup>4</sup>NA when local weather not available.

**IMPERIAL, NE**

IMPERIAL MUNI (IML).....**RNAV (GPS) Rwy 13**  
**RNAV (GPS) Rwy 31**

NA when local weather not available.

22 FEB 2024 to 21 MAR 2024

22 FEB 2024 to 21 MAR 2024

NAME ALTERNATE MINIMUMS

**INDEPENDENCE, KS**

INDEPENDENCE  
MUNI (IDP).....RNAV (GPS) Rwy 17  
RNAV (GPS) Rwy 35  
VOR-A<sup>1</sup>

Category D, 900-2¾.  
<sup>1</sup>NA when local weather not available.

**JOHNSON, KS**

STANTON COUNTY  
MUNI (JHN).....RNAV (GPS) Rwy 17  
RNAV (GPS) Rwy 35

NA when local weather not available.  
Category D, 800-2¼.

**KEARNEY, NE**

KEARNEY  
RGNL (EAR).....RNAV (GPS) Rwy 13  
RNAV (GPS) Rwy 18<sup>1</sup>  
RNAV (GPS) Rwy 36<sup>1</sup>  
VOR Rwy 18<sup>1</sup>

NA when local weather not available.  
<sup>1</sup>Category D, 800-2¼.

**KIMBALL, NE**

KIMBALL MUNI/ROBERT E ARRAJ  
FLD (IBM).....RNAV (GPS) Rwy 10  
RNAV (GPS) Rwy 28

NA when local weather not available.

**LARNED, KS**

LARNED-PAWNEE  
COUNTY (LQR).....RNAV (GPS) Rwy 17  
RNAV (GPS) Rwy 35

NA when local weather not available.

**LAWRENCE, KS**

LAWRENCE RGNL (LWC).....ILS or LOC Rwy 33<sup>1</sup>  
RNAV (GPS) Rwy 15<sup>2</sup>  
RNAV (GPS) Rwy 33<sup>2</sup>  
VOR/DME-A<sup>2</sup>

NA when local weather not available.  
<sup>1</sup>LOC, Category C, 800-2¼.  
<sup>2</sup>Category C, 800-2¼.

**LEXINGTON, NE**

JIM KELLY FLD (LXN).....RNAV (GPS) Rwy 32  
NA when local weather not available.

**LIBERAL, KS**

LIBERAL MID-AMERICA  
RGNL (LBL).....ILS or LOC Rwy 35  
RNAV (GPS) Rwy 4<sup>1</sup>  
RNAV (GPS) Rwy 17<sup>1</sup>  
RNAV (GPS) Rwy 22<sup>1</sup>  
RNAV (GPS) Rwy 35

NA when local weather not available.  
<sup>1</sup>Category C, 800-2¼; Category D, 800-2½.

NAME ALTERNATE MINIMUMS

**LINCOLN, NE**

LINCOLN (LNK).....ILS Y or LOC Y Rwy 18<sup>12</sup>  
ILS Y or LOC Y Rwy 36<sup>12</sup>  
RNAV (GPS) Rwy 14<sup>3</sup>  
RNAV (GPS) Rwy 17<sup>3</sup>  
RNAV (GPS) Rwy 18<sup>3</sup>  
RNAV (GPS) Rwy 32<sup>3</sup>  
RNAV (GPS) Rwy 35<sup>3</sup>  
RNAV (GPS) Rwy 36<sup>3</sup>  
VOR Rwy 17<sup>3</sup>  
VOR Y Rwy 18<sup>3</sup>

NA when local weather not available.  
<sup>1</sup>NA when control tower closed.  
<sup>2</sup>LOC, Category E, 900-3.  
<sup>3</sup>Category D, 800-2¾.

**LYONS, KS**

LYONS-RICE COUNTY  
MUNI (LYO).....RNAV (GPS) Rwy 17  
RNAV (GPS) Rwy 35  
VOR-A

NA when local weather not available.

**MANHATTAN, KS**

MANHATTAN  
RGNL (MHK).....ILS or LOC Rwy 3<sup>1</sup>  
RNAV (GPS) Rwy 3<sup>2</sup>  
RNAV (GPS) Rwy 21<sup>2</sup>  
VOR Rwy 3<sup>2</sup>  
VOR-F<sup>2</sup>

NA when local weather not available.  
<sup>1</sup>LOC, Category C, 900-2½; Category D, 900-2¾.  
<sup>2</sup>Category C, 900-2½; Category D, 900-2¾.

**MARYSVILLE, KS**

MARYSVILLE  
MUNI (MYZ).....RNAV (GPS) Rwy 16  
NA when local weather not available.  
Categories A, B, 900-2; Category C, 900-2¾.

**MC COOK, NE**

MC COOK BEN NELSON  
RGNL (MCK).....ILS or LOC/DME Rwy 12<sup>1</sup>  
RNAV (GPS) Rwy 12<sup>2</sup>  
RNAV (GPS) Rwy 22<sup>2</sup>  
RNAV (GPS) Rwy 30<sup>2</sup>  
VOR Rwy 30<sup>2</sup>

NA when local weather not available.  
<sup>1</sup>LOC, Category C 800-2¼.  
<sup>2</sup>Category C 800-2¼.

**NEBRASKA CITY, NE**

NEBRASKA CITY  
MUNI (AFK).....NDB Rwy 15  
NDB Rwy 33  
RNAV (GPS) Rwy 15  
RNAV (GPS) Rwy 33

NA when local weather not available.

22 FEB 2024 to 21 MAR 2024

22 FEB 2024 to 21 MAR 2024

NAME ALTERNATE MINIMUMS

**NEWTON, KS**

NEWTON-CITY-COUNTY (EWK).....ILS or LOC Rwy 17  
RNAV (GPS) Rwy 17  
RNAV (GPS) Rwy 35

NA when local weather not available.

**NORFOLK, NE**

NORFOLK RGNL/KARL STEFAN MEML  
FLD (OFK).....ILS or LOC Rwy 2<sup>1</sup>  
RNAV (GPS) Rwy 2<sup>2</sup>  
RNAV (GPS) Rwy 14<sup>2</sup>  
RNAV (GPS) Rwy 20<sup>2</sup>  
RNAV (GPS) Rwy 32<sup>2</sup>  
VOR Rwy 14<sup>2</sup>  
VOR Rwy 32<sup>2</sup>

NA when local weather not available.

<sup>1</sup>LOC, Category D, 800-2½.

<sup>2</sup>Category D, 800-2½.

**NORTH PLATTE, NE**

NORTH PLATTE RGNL/LEE BIRD  
FLD (LBF).....ILS or LOC Rwy 30<sup>1</sup>  
RNAV (GPS) Rwy 12<sup>2</sup>  
RNAV (GPS) Rwy 30<sup>2</sup>  
RNAV (GPS) Rwy 35<sup>2</sup>  
VOR Rwy 35<sup>3</sup>

<sup>1</sup>LOC, Category D, 800-2½.

<sup>2</sup>Category D, 800-2½.

<sup>3</sup>Category C, 800-2¼; Category D, 800-2½.

**NORTON, KS**

NORTON MUNI (NRN).....RNAV (GPS) Rwy 16  
RNAV (GPS) Rwy 34

NA when local weather not available.

**OAKLEY, KS**

OAKLEY  
MUNI (OEL).....RNAV (GPS) Rwy 34  
Category C, 800-2¼.

NA when local weather not available.

**OBERLIN, KS**

OBERLIN MUNI (OIN).....NDB Rwy 35  
RNAV (GPS) Rwy 17  
RNAV (GPS) Rwy 35

NA when local weather not available.

**OGALLALA, NE**

SEARLE FLD (OGA).....RNAV (GPS) Rwy 8  
RNAV (GPS) Rwy 13  
RNAV (GPS) Rwy 26  
RNAV (GPS) Rwy 31  
VOR Rwy 26

NA when local weather not available.

NAME ALTERNATE MINIMUMS

**OLATHE, KS**

NEW CENTURY  
AIRCENTER (IXD).....RNAV (GPS) Rwy 4  
RNAV (GPS) Rwy 18  
RNAV (GPS) Rwy 22  
RNAV (GPS) Rwy 36

NA when local weather not available.

**OMAHA, NE**

EPPLEY  
AIRFIELD (OMA).....ILS or LOC Rwy 14L<sup>1</sup>  
ILS or LOC Rwy 14R<sup>1</sup>  
ILS or LOC Rwy 18<sup>1</sup>  
ILS or LOC Rwy 32L<sup>1</sup>  
ILS or LOC Rwy 32R<sup>1</sup>  
ILS or LOC Rwy 36<sup>1</sup>  
RNAV (GPS) Y Rwy 14L<sup>2</sup>  
RNAV (GPS) Y Rwy 14R<sup>2</sup>  
RNAV (GPS) Y Rwy 18<sup>2</sup>  
RNAV (GPS) Y Rwy 32L<sup>2</sup>  
RNAV (GPS) Y Rwy 32R<sup>2</sup>  
RNAV (GPS) Y Rwy 36<sup>2</sup>

<sup>1</sup>LOC, Categories C, D, 1100-3.

<sup>2</sup>Categories C, D, 1100-3.

MILLARD (MLE).....RNAV (GPS) Rwy 12  
RNAV (GPS) Rwy 30

NA when local weather not available.

**O'NEILL, NE**

THE O'NEILL MUNI-JOHN L BAKER  
FLD (ONL).....RNAV (GPS) Rwy 13  
RNAV (GPS) Rwy 31  
VOR Rwy 13<sup>1</sup>  
VOR Rwy 31<sup>1</sup>

NA when local weather not available.

<sup>1</sup>Category D, 900-2¼.

**ORD, NE**

EVELYN SHARP FLD (ODX).....NDB Rwy 13<sup>1</sup>  
RNAV (GPS) Rwy 13  
RNAV (GPS) Rwy 31

NA when local weather not available.

<sup>1</sup>Categories A, B, 1000-2.

**OTTAWA, KS**

OTTAWA  
MUNI (OWI).....RNAV (GPS) Rwy 17  
RNAV (GPS) Rwy 35

NA when local weather not available.

Category C, 800-2¼.

**PARSONS, KS**

TRI-CITY (PPF).....RNAV (GPS) Rwy 17  
RNAV (GPS) Rwy 35  
VOR Rwy 17

NA when local weather not available.

22 FEB 2024 to 21 MAR 2024

22 FEB 2024 to 21 MAR 2024

NAME ALTERNATE MINIMUMS

**PITTSBURG, KS**

ATKINSON MUNI (PTS).....RNAV (GPS) Rwy 4<sup>1</sup>  
RNAV (GPS) Rwy 17<sup>2</sup>  
RNAV (GPS) Rwy 22<sup>1</sup>  
RNAV (GPS) Rwy 35<sup>2</sup>

<sup>1</sup>NA when local weather not available.

<sup>2</sup>Category D, 800-2½.

**PLATTSMOUTH, NE**

PLATTSMOUTH MUNI/DOUGLAS V DUEY  
FLD (PMV).....NDB Rwy 34  
RNAV (GPS) Rwy 16  
RNAV (GPS) Rwy 34

NA when local weather not available.

**PRATT, KS**

PRATT RGNL (PTT).....RNAV (GPS) Rwy 17  
RNAV (GPS) Rwy 35

NA when local weather not available.

**RUSSELL, KS**

RUSSEL MUNI (RSL).....RNAV (GPS) Rwy 17  
RNAV (GPS) Rwy 35  
VOR/DME-A

NA when local weather not available.

Category C, 800-2¼.

**SALINA, KS**

SALINA RGNL (SLN).....ILS or LOC Rwy 35<sup>12</sup>  
NDB Rwy 35<sup>3</sup>  
RNAV (GPS) Rwy 12<sup>4</sup>  
RNAV (GPS) Rwy 30<sup>4</sup>  
VOR Rwy 17<sup>45</sup>

<sup>1</sup>LOC, NA when control tower closed.

<sup>2</sup>LOC, Category E, 800-2¼.

<sup>3</sup>NA when control tower closed.

<sup>4</sup>NA when local weather not available.

<sup>5</sup>Category E, 800-2¼.

**SAINT FRANCIS, KS**

CHEYENNE COUNTY MUNI (SYF).....NDB-A  
RNAV (GPS) Rwy 14  
RNAV (GPS) Rwy 32

NA when local weather not available.

**SCOTT CITY, KS**

SCOTT CITY  
MUNI (TQK).....RNAV (GPS) Rwy 17  
RNAV (GPS) Rwy 35

NA when local weather not available.

Category D, 800-2¼.

NAME ALTERNATE MINIMUMS

**SCOTTSBLUFF, NE**

WESTERN NEBRASKA RGNL/WILLIAM B  
HEILIG FLD (BFF).....ILS or LOC Rwy 30<sup>1</sup>  
ILS or LOC/DME Rwy 12<sup>1</sup>  
RNAV (GPS) Rwy 5<sup>2</sup>  
RNAV (GPS) Rwy 12<sup>2</sup>  
RNAV (GPS) Rwy 23<sup>2</sup>  
RNAV (GPS) Rwy 30<sup>2</sup>  
VOR/DME Rwy 5<sup>2</sup>  
VOR or TACAN Rwy 23<sup>2</sup>

NA when local weather not available.

<sup>1</sup>LOC, Category D, 800-2½.

<sup>2</sup>Category D, 800-2½.

**SIDNEY, NE**

SIDNEY MUNI/LLOYD W CARR  
FLD (SNY).....RNAV (GPS) Rwy 13  
RNAV (GPS) Rwy 31  
VOR/DME Rwy 13  
VOR/DME Rwy 31

NA when local weather not available.

**SYRACUSE, KS**

SYRACUSE-HAMILTON COUNTY  
MUNI (3K3).....RNAV (GPS) Rwy 18<sup>1</sup>  
RNAV (GPS) Rwy 36<sup>2</sup>

NA when local weather not available.

<sup>1</sup>Categories A, B, 800-2¼; Category C, 900-2½.

<sup>2</sup>Category C, 900-2½.

**TEKAMAH, NE**

TEKAMAH MUNI (TQE).....RNAV (GPS) Rwy 15  
RNAV (GPS) Rwy 33

Category C, 800-2¼.

**THEDFORD, NE**

THOMAS COUNTY (TIF).....RNAV (GPS) Rwy 11  
RNAV (GPS) Rwy 29

NA when local weather not available.

**TOPEKA, KS**

TOPEKA RGNL (FOE).....ILS or LOC Rwy 31<sup>12</sup>  
RNAV (GPS) Rwy 3  
RNAV (GPS) Rwy 13  
RNAV (GPS) Rwy 21  
RNAV (GPS) Rwy 31

NA when local weather not available.

<sup>1</sup>LOC, Category E, 800-2¼.

<sup>2</sup>NA when control tower closed.

PHILIP BILLARD

MUNI (TOP).....ILS or LOC Rwy 13  
NA when control tower closed.  
ILS, Category C, 800-2.

22 FEB 2024 to 21 MAR 2024

22 FEB 2024 to 21 MAR 2024



24025

NAME ALTERNATE MINIMUMS

**ULYSSES, KS**

ULYSSES (ULS).....RNAV (GPS) Rwy 12  
RNAV (GPS) Rwy 17  
RNAV (GPS) Rwy 30

NA when local weather not available.  
Category C, 900-2½.

**VALENTINE, NE**

MILLER FLD (VTN).....NDB Rwy 32  
RNAV (GPS) Rwy 3<sup>1</sup>  
RNAV (GPS) Rwy 14  
RNAV (GPS) Rwy 21  
RNAV (GPS) Rwy 32

Category B, 1000-2.  
<sup>1</sup>NA when local weather not available.

**WAHOO, NE**

WAHOO  
MUNI (AHQ).....RNAV (GPS) Rwy 20  
NA when local weather not available.

**WAYNE, NE**

WAYNE MUNI/STAN MORRIS  
FLD (LCG).....RNAV (GPS) Rwy 18  
RNAV (GPS) Rwy 23  
NA when local weather not available.

**WICHITA, KS**

COLONEL JAMES  
JABARA (AAO).....ILS or LOC Rwy 18<sup>1</sup>  
RNAV (GPS) Rwy 18<sup>2</sup>  
RNAV (GPS) Rwy 36<sup>2</sup>  
RNAV (GPS)-E<sup>2</sup>

NA when local weather not available.  
<sup>1</sup>LOC, Category D, 800-2½.  
<sup>2</sup>Category D, 800-2½.

WICHITA DWIGHT D EISENHOWER

NTL (ICT).....ILS or LOC Rwy 1L<sup>1</sup>  
ILS or LOC Rwy 1R<sup>1</sup>  
ILS or LOC Rwy 19L<sup>2</sup>  
ILS or LOC Rwy 19R<sup>1</sup>  
NDB Rwy 1R<sup>3,4</sup>  
RNAV (GPS) Rwy 1R<sup>5</sup>  
VOR Rwy 14<sup>6</sup>

<sup>1</sup>ILS, Category E, 700-2¼;  
LOC Category E, 800-2¼.  
<sup>2</sup>ILS, Categories C, D, 700-2; Category E, 700- 2¼;  
LOC, Category E, 800-2¼.  
<sup>3</sup>NA when local weather not available.  
<sup>4</sup>Categories C, D, 1200-2.  
<sup>5</sup>Category E, 800-2¼.  
<sup>6</sup>Categories A, B, 900-2; Category C, 900-2¼;  
Category D, 900-3.

**WINFIELD/ARKANSAS CITY, KS**

STROTHER  
FLD (WLD).....RNAV (GPS) Rwy 35  
NA when local weather not available.

NAME ALTERNATE MINIMUMS

**YORK, NE**

YORK MUNI (JYR).....RNAV (GPS) Rwy 17  
RNAV (GPS) Rwy 35

NA when local weather not available.

22 FEB 2024 to 21 MAR 2024

22 FEB 2024 to 21 MAR 2024

24025

M7