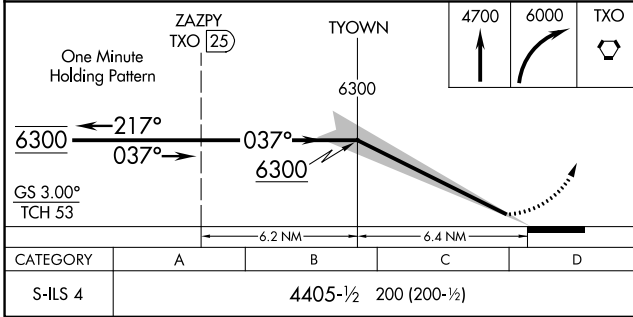
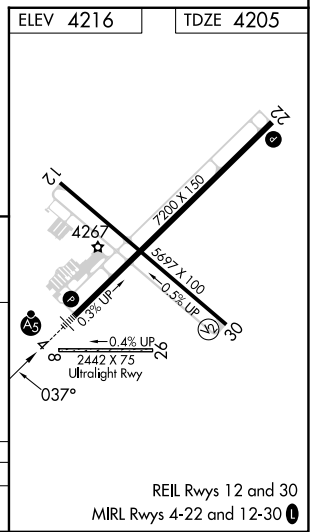
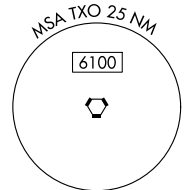
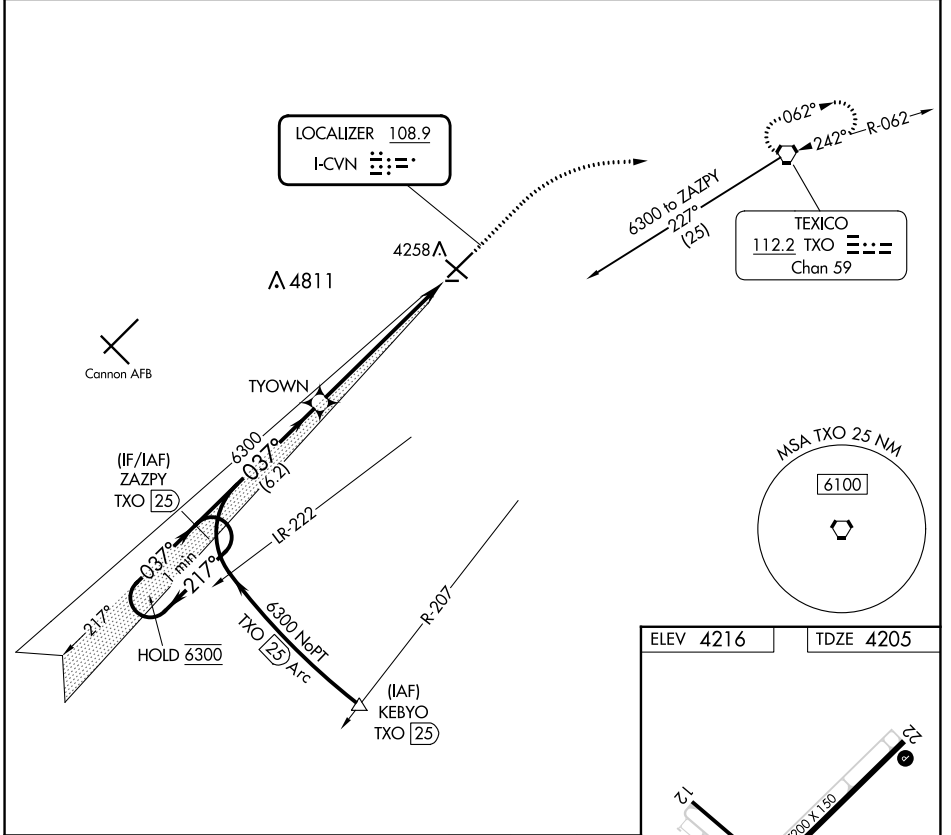


LOC I-CVN <b>108.9</b>	APP CRS <b>037°</b>	Rwy Idg TDZE Apt Elev	<b>7200</b> <b>4205</b> <b>4216</b>
---------------------------	------------------------	-----------------------------	---

# ILS RWY 4

CLOVIS RGNL (CVN)

DME required. ▽ ▲ NA		MALSR AS	MISSED APPROACH: Climb to 4700 then climbing right turn to 6000 direct TXO VORTAC and hold.	
AWOS-3PT <b>135.375</b>	CANNON APP CON <b>118.425 352.1</b>	CLNC DEL <b>119.0</b>	UNICOM <b>122.8 (CTAF) 0</b>	



CATEGORY	A	B	C	D
S-ILS 4		4405-1/2	200 (200-1/2)	

SW-1, 22 FEB 2024 to 21 MAR 2024

SW-1, 22 FEB 2024 to 21 MAR 2024

REIL Rwy 12 and 30  
MIRL Rwy 4-22 and 12-30

CLOVIS, NEW MEXICO

AL-5144 (FAA)

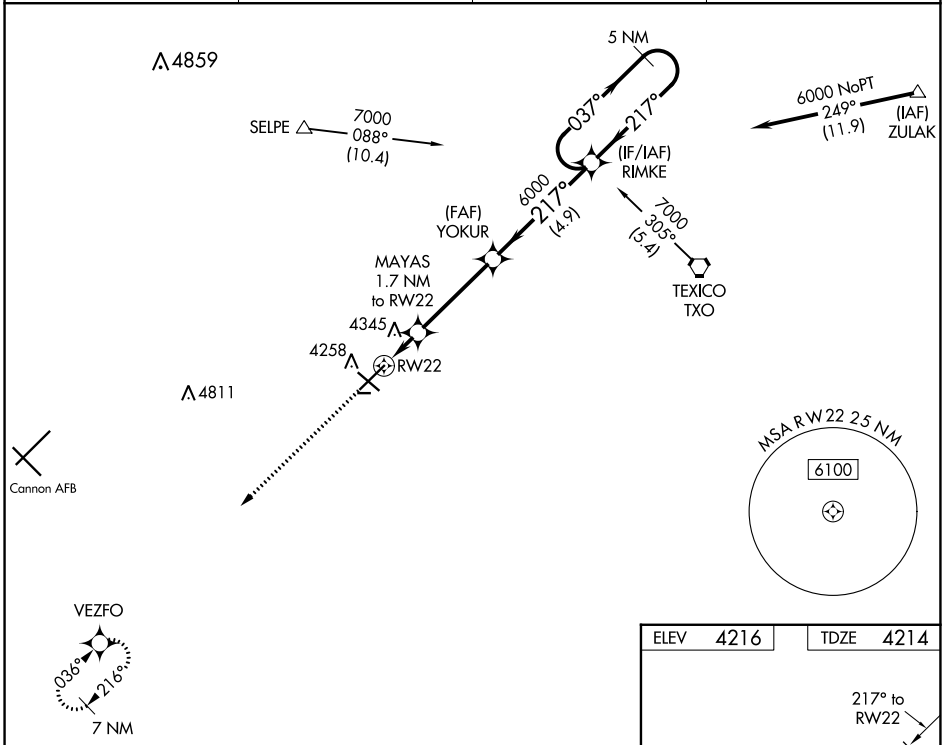
22139

WAAS CH <b>99637</b> <b>W22A</b>	APP CRS <b>217°</b>	Rwy Idg TDZE Apt Elev	<b>7200</b> <b>4214</b> <b>4216</b>
--	------------------------	-----------------------------	---

# RNAV (GPS) RWY 22

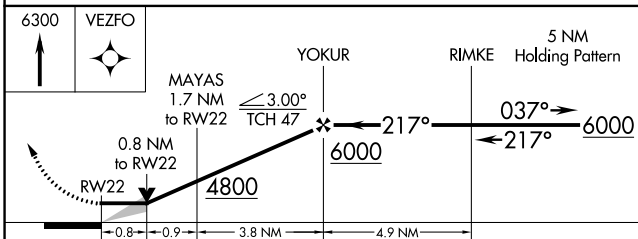
CLOVIS RGNL (CVN)

<p><b>⚠</b> DME/DME RNP-0.3 NA. When local altimeter setting not received, use Cannon AFB altimeter setting and increase all MDA 40 feet; increase LP Cat C/D visibility ¼ mile; increase LNAV Cat C/D visibility ½ mile. VDP NA when using Cannon AFB altimeter setting.</p>		<p>MISSED APPROACH: Climb to 6300 direct VEZFO and hold.</p>	
AWOS-3PT <b>135.375</b>	CANNON APP CON <b>118.425 352.1</b>	CLNC DEL <b>119.0</b>	UNICOM <b>122.8 (CTAF) 0</b>



SW-1, 22 FEB 2024 to 21 MAR 2024

SW-1, 22 FEB 2024 to 21 MAR 2024



ELEV	4216	TDZE	4214
------	------	------	------

REIL Rwy 12 and 30  
MIRL Rwy 4-22 and 12-30 0

CATEGORY		A	B	C	D
LP	MDA	4520-1	306 (400-1)	4520-7/8	306 (400-7/8)
LNAV	MDA	4620-1	406 (500-1)	4620-1 1/8	406 (500-1 1/8)
<b>C</b>	CIRCLING	4680-1	464 (500-1)	4700-1 1/2 484 (500-1 1/2)	4820-2 604 (700-2)

CLOVIS, NEW MEXICO  
Amdt 1 15OCT15

34°26'N-103°05'W

# RNAV (GPS) RWY 22

CLOVIS RGNL (CVN)

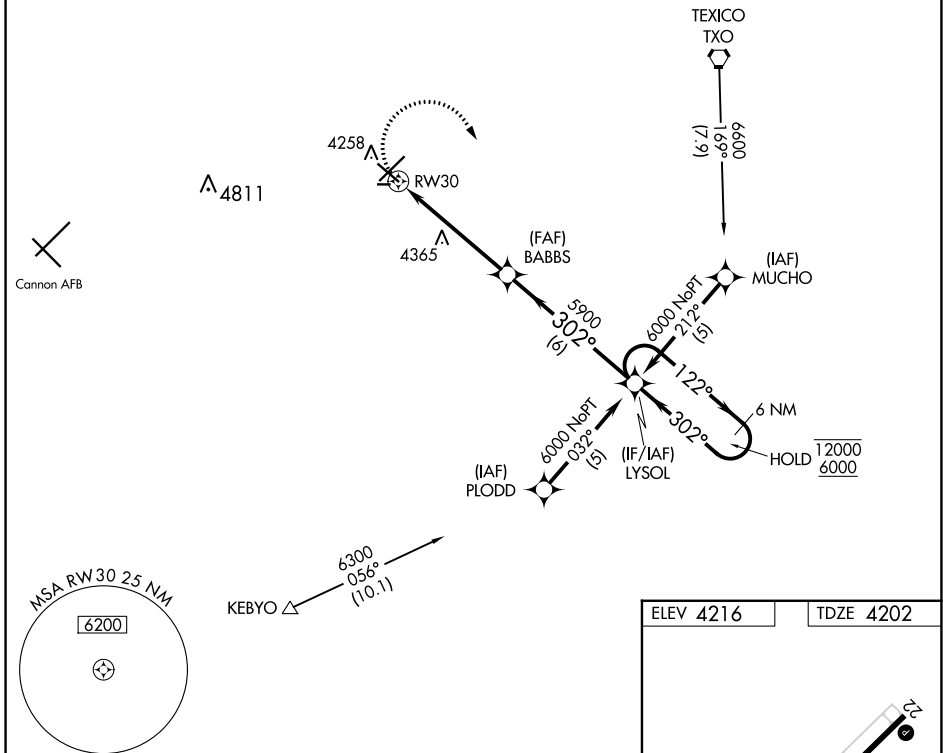
APP CRS	Rwy Idg	<b>5697</b>
<b>302°</b>	TDZE	<b>4202</b>
	Apt Elev	<b>4216</b>

# RNAV (GPS) RWY 30

CLOVIS RGNL (CVN)

RNP APCH.		MISSED APPROACH: Climbing right turn to 6000 direct LYSOL and hold.	
CAUTION: Cannon AFB 12 NM WSW, heavy USAF fighter traffic.			
AWOS-3PT <b>135.375</b>	CANNON APP CON <b>118.425 352.1</b>	CLNC DEL <b>119.0</b>	UNICOM <b>122.8 (CTAF) ①</b>

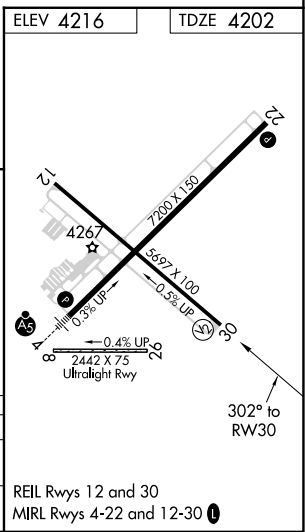
Procedure NA for arrivals at TXO VORTAC via V62 northwest bound.



SW-1, 22 FEB 2024 to 21 MAR 2024

SW-1, 22 FEB 2024 to 21 MAR 2024

6000	LYSOL	VGSI and descent angles not coincident (VGSI Angle 3.00/TCH 75)	
		LYSOL	6 NM Holding Pattern
		12000	6000
CATEGORY	A	B	C
LNVA MDA	4620-1	418 (500-1)	4620-1¼ 418 (500-1¼)
CIRCLING	4680-1	464 (500-1)	4700-1½ 484 (500-1½) 4820-2 604 (700-2)



WAAS CH <b>97300</b> <b>W04A</b>	APP CRS <b>037°</b>	Rwy Idg <b>7200</b> TDZE <b>4205</b> Apt Elev <b>4216</b>
--	------------------------	---

# RNAV (GPS) RWY 4

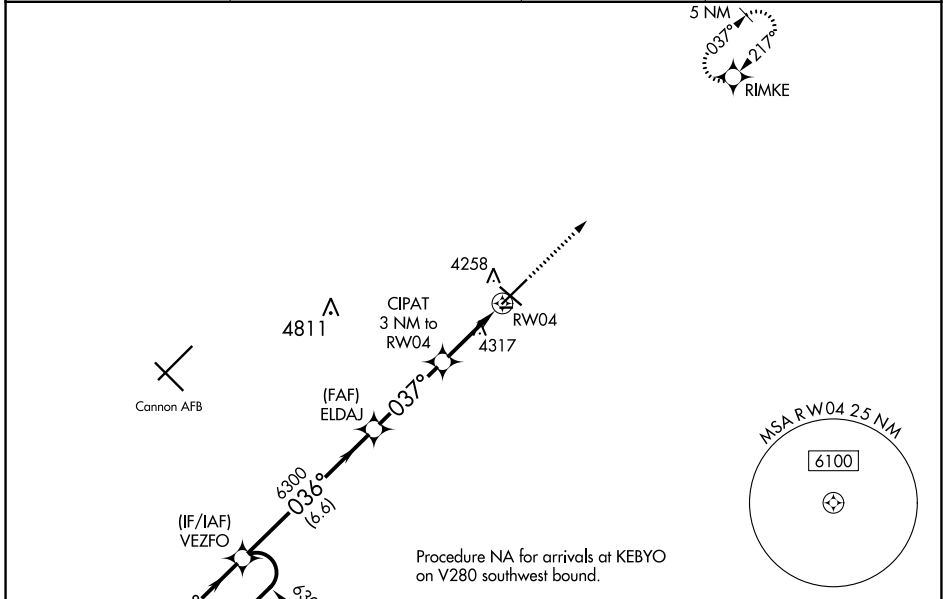
CLOVIS RGNL (CVN)

**⚠** For uncompensated Baro-VNAV systems, LNAV/VNAV NA below -23°C (-9°F) or above 49°C (121°F). DME/DME RNP-0.3 NA. When local altimeter setting not received, use Cannon AFB altimeter setting and increase all DA and MDA 40 feet; increase LNAV Cat C/D visibility ¼ mile. For inop MALSR, increase LNAV/VNAV all Cats visibility to ¾ mile. For inop MALSR when using Cannon AFB altimeter setting, increase LNAV Cat C/D visibility to 1 ¾ mile. Baro-VNAV and VDP NA when using Cannon AFB altimeter setting.

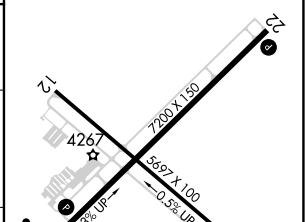
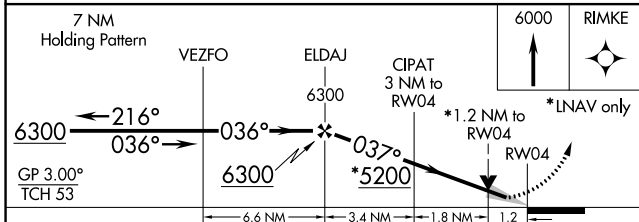
**MALSR**

**MISSED APPROACH:**  
Climb to 6000 direct RIMKE and hold.

AWOS-3PT <b>135.375</b>	CANNON APP CON <b>118,425 352.1</b>	CLNC DEL <b>119.0</b>	UNICOM <b>122.8 (CTAF) ①</b>
----------------------------	--	--------------------------	---------------------------------



ELEV 4216	TDZE 4205
-----------	-----------



CATEGORY	A	B	C	D
LPV DA		4405-½	200 (200-½)	
LNAV/ VNAV DA		4455-½	250 (300-½)	
LNAV MDA	4640-½	435 (500-½)	4640-¾	435 (500-¾)
<b>C</b> CIRCLING	4680-1	464 (500-1)	4700-1½ 484 (500-1½)	4820-2 604 (700-2)

REIL Rwy 12 and 30  
MIRL Rwy 4-22 and 12-30 ①

SW-1, 22 FEB 2024 to 21 MAR 2024

SW-1, 22 FEB 2024 to 21 MAR 2024

VORTAC TXO <b>112.2</b> Chan <b>59</b>	APP CRS <b>242°</b>	Rwy Idg TDZE Apt Elev	<b>7200</b> <b>4214</b> <b>4216</b>
--	------------------------	-----------------------------	---

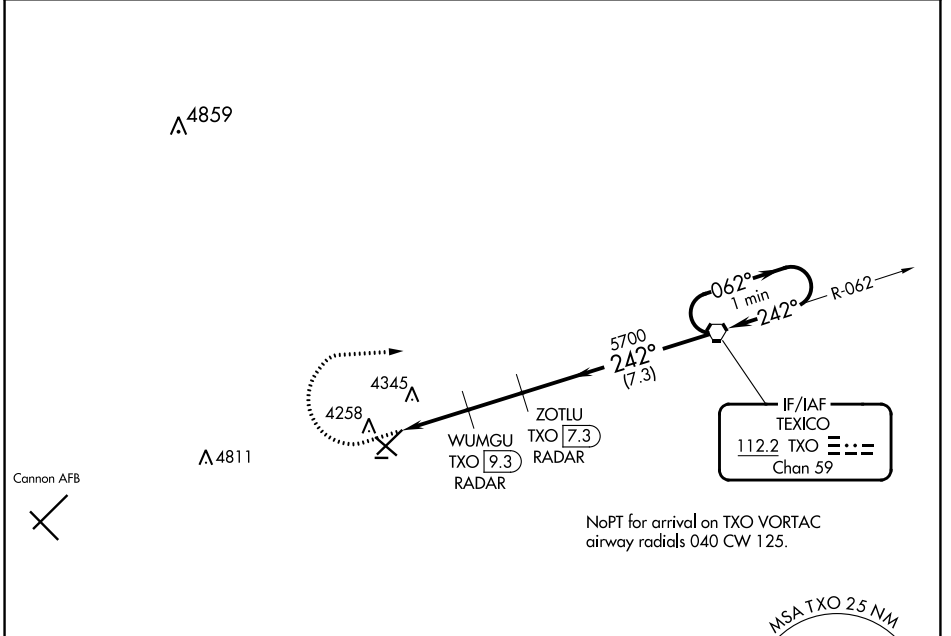
# VOR RWY 22

CLOVIS RGNL (CVN)

**⚠** DME or Radar required. When local altimeter setting not received, use Cannon AFB altimeter setting and increase all MDA 40 feet; increase S-22 Cat C/D visibility 1/8 mile. VDP NA when using Cannon AFB altimeter setting.

**MISSED APPROACH:** Climb to 4700 then climbing right turn to 6000 direct TXO VORTAC and hold.

AWOS-3PT <b>135,375</b>	CANNON APP CON <b>118,425 352.1</b>	CLNC DEL <b>119.0</b>	UNICOM <b>122.8 (CTAF) 0</b>
----------------------------	--	--------------------------	---------------------------------



ELEV 4216	TDZE 4214
-----------	-----------

Diagram showing the runway layout for RWY 22. The runway is 7200 x 180 feet. Taxiway 12 is 5597 x 100 feet. The diagram also shows the location of Cannon AFB and various altitudes (4267, 4216, 4214). The diagram includes the following information:

- REIL Rwy 12 and 30
- MIRL Rwy 4-22 and 12-30
- FAF to MAP 4.5 NM
- Grades: 0.3% UP, 0.33% UP, 0.4% UP
- Distances: 2442 x 75, 1597 x 100

Knots	60	90	120	150	180
Min:Sec	4:32	3:01	2:16	1:49	1:31

4700	6000	TXO	One Minute Holding Pattern	
WUMGU TXO 9.3 RADAR		ZOTLU TXO 7.3 RADAR	TXO VORTAC	
TXO 11.8		TXO 10.8	6000	
5040		5700	6000	
1		1.5	2	
1		1.5	2	
CATEGORY	A	B	C	D
S-22	4600-1	386 (400-1)	4600-1½	386 (400-1½)
<input checked="" type="checkbox"/> CIRCLING	4680-1	464 (500-1)	4700-1½	4820-2
			484 (500-1½)	604 (700-2)

SW-1, 22 FEB 2024 to 21 MAR 2024

SW-1, 22 FEB 2024 to 21 MAR 2024