

APP CRS	Rwy Idg	5004
139°	TDZE	449
	Apt Elev	449

RNAV (GPS) RWY 14

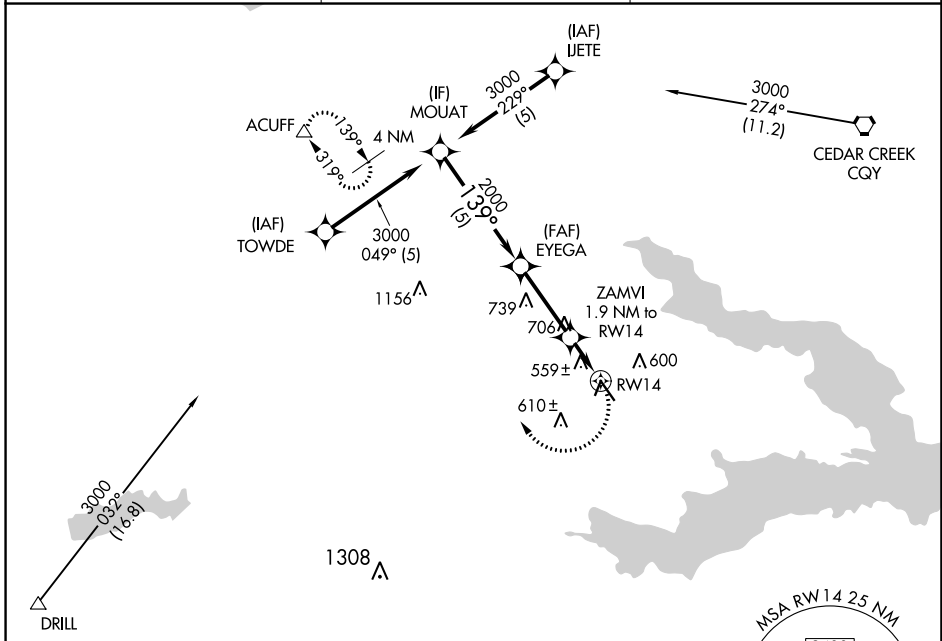
C DAVID CAMPBELL FLD-CORSICANA MUNI (CRS)

RNP APCH.

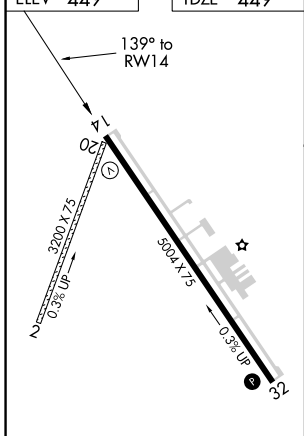
▼ Rwy 14 helicopter visibility reduction below 1 SM NA. Procedure NA at night.

MISSED APPROACH: Climbing right turn to 3000 direct ACUFF and hold.

ASOS 120.675	FORT WORTH CENTER 135.25 265.1	UNICOM 122.8 (CTAF) ①
------------------------	--	---------------------------------



ELEV	449	TDZE	449
------	------------	------	------------



MIRL Rwy 14-32 ①
REIL Rws 14 and 32

Visual Segment - Obstacles.				3000	ACUFF
MOUAT				EYEGA	ZAMVI 1.9 NM to RW14
3000					
5 NM				3.1 NM	
139°				1040	
2000				1.9 NM	
CATEGORY	A	B	C	D	
LNAV MDA	820-1 371 (400-1)			820-1¼ 371 (400-1¼)	

RNAV (GPS) RWY 14

SC-2, 22 FEB 2024 to 21 MAR 2024

SC-2, 22 FEB 2024 to 21 MAR 2024

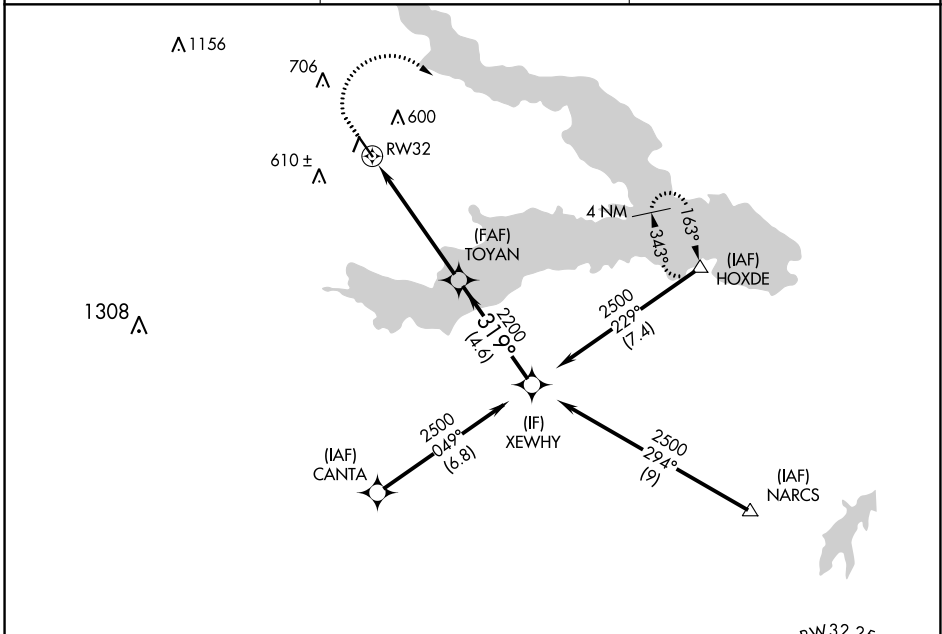
APP CRS 319°	Rwy Idg TDZE Apt Elev	5004 442 449
------------------------	-----------------------------	---

RNAV (GPS) RWY 32

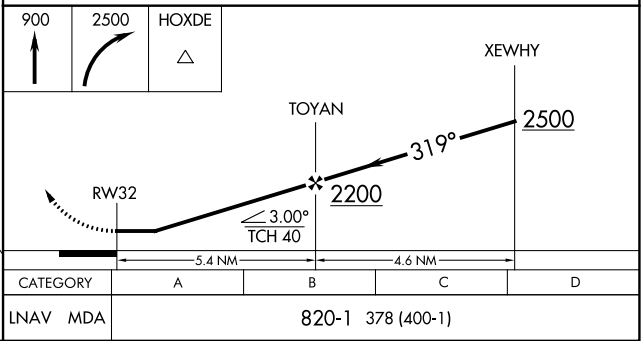
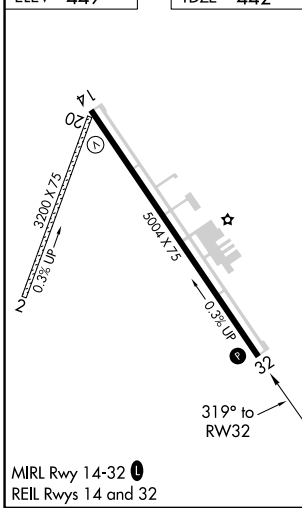
C DAVID CAMPBELL FLD-CORSICANA MUNI (CRS)

RNP APCH.	Procedure NA at night. Rwy 32 helicopter visibility reduction below 1 SM NA.	MISSED APPROACH: Climb to 900, then climbing right turn to 2500 direct HOXDE and hold.
-----------	---	--

ASOS 120.675	FORT WORTH CENTER 135.25 265.1	UNICOM 122.8 (CTAF)
------------------------	--	-------------------------------



ELEV 449	TDZE 442
-----------------	-----------------



RNAV (GPS) RWY 32

SC-2, 22 FEB 2024 to 21 MAR 2024

SC-2, 22 FEB 2024 to 21 MAR 2024

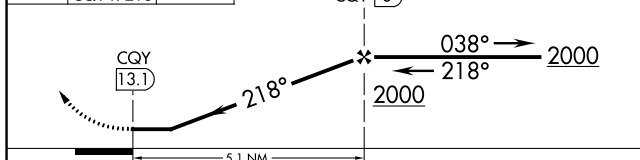
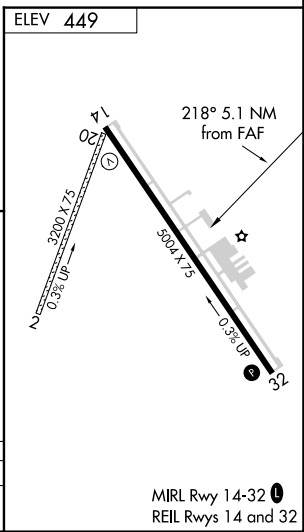
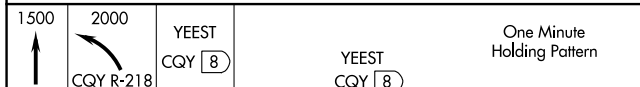
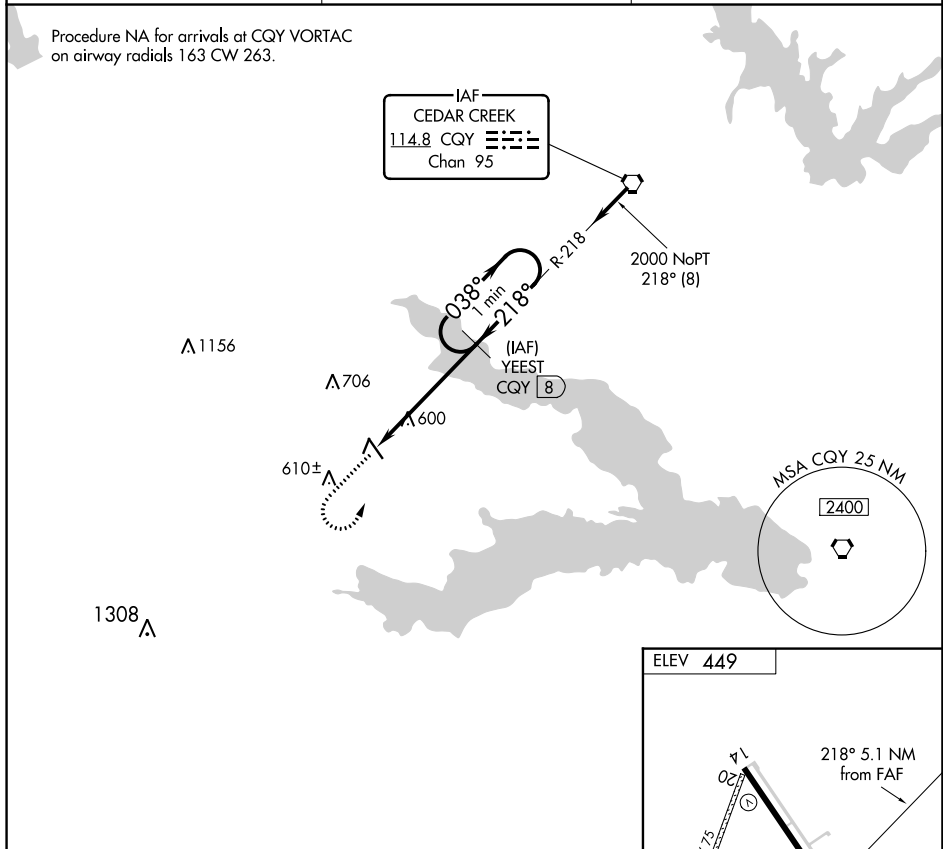
VORTAC CQY 114.8 Chan 95	APP CRS 218°	Rwy Idg TDZE Apt Elev	N/A N/A 449
--	------------------------	-----------------------------	--

VOR/DME-A

C DAVID CAMPBELL FLD-CORSICANA MUNI (CRS)

▼ Procedure NA at night. Circling NA to Rwys 2 and 20.
▲ NA MISSED APPROACH: Climb to 1500 then climbing left turn to 2000 via CQY VORTAC R-218 to YEEST/CQY 8 DME and hold.

ASOS 120.675	FORT WORTH CENTER 135.25 265.1	UNICOM 122.8 (CTAF) 0
------------------------	--	--



CATEGORY	A	B	C	D
C CIRCLING	860-1 411 (500-1)	960-1 511 (600-1)	1060-1¾ 611 (700-1¾)	1080-2 631 (700-2)

VOR/DME-A

SC-2, 22 FEB 2024 to 21 MAR 2024

SC-2, 22 FEB 2024 to 21 MAR 2024