

# BITHO SEVEN ARRIVAL

ORLANDO, FLORIDA

ORLANDO APP CON  
 128.375 338.2  
 ISM ATIS  
 128.775  
 KCOF ATIS  
 119.175 273.5  
 MLB ATIS  
 132.55  
 MCO D-ATIS ARR  
 121.25  
 TIX ATIS  
 120.625

ORMOND BEACH  
 112.6 OMN  
 Chan 73  
 N29° 18.20' - W81° 06.76'  
 L-21-23-24, H-8

LAMMA  
 N29° 00.87' - W81° 05.38'  
TURBOJET VERTICAL NAVIGATION  
PLANNING INFORMATION

Expect clearance to cross at 15000' landing Patrick SFB, Melbourne Orlando Intl, and Merritt Island.  
 Expect clearance to cross at 12000' landing Orlando Intl, Kissimmee Gateway, Space Coast Rgnl, Cape Canaveral SFS Skid Strip, and Space Florida Launch and Landing.  
 NOTE: Orlando Intl Landing South: Expect clearance to cross at 250K.

OCALA  
 113.7 OCF  
 Chan 84

JESUP  
 N28° 53.31'  
 W81° 04.78'

COZMO  
 N28° 47.95' - W81° 04.36'  
TURBOJET VERTICAL NAVIGATION  
PLANNING INFORMATION

Expect clearance to cross at 10000' landing Orlando Intl Rwy 18.

ORLANDO  
 112.2 ORL  
 Chan 59

BITHO  
 N28° 37.86' - W81° 03.56'  
TURBOJET VERTICAL NAVIGATION  
PLANNING INFORMATION

Expect clearance to cross at 8000' landing Space Florida Launch and Landing Facility, Cape Canaveral SFS Skid Strip, Merritt Island, Patrick SFB, and Melbourne Orlando Intl.

ORLANDO INTL

KISSIMMEE GATEWAY

SPACE FLORIDA LAUNCH AND LANDING FACILITY

SPACE COAST RGNL

CAPE CANAVERAL SFS SKID STRIP

MERRITT ISLAND

PATRICK SFB

MELBOURNE ORLANDO INTL

NOTE: Chart not to scale.

## ARRIVAL ROUTE DESCRIPTION

From over OMN VORTAC via OMN R-176 to BITHO INT. Expect RADAR vectors to final approach course after BITHO INT.

SE-3, 22 FEB 2024 to 21 MAR 2024

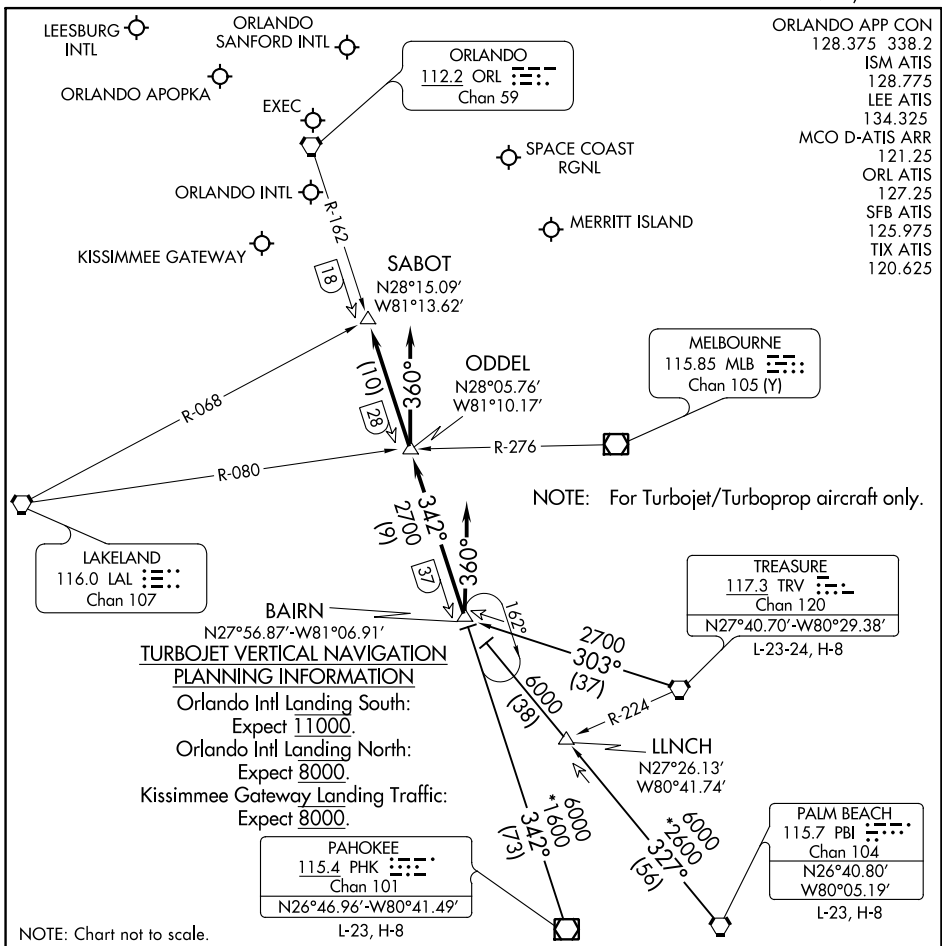
SE-3, 22 FEB 2024 to 21 MAR 2024

(BAIRN.GOOFY7) 23222

AL-571 (FAA)

# GOOFY SEVEN ARRIVAL

ORLANDO, FLORIDA



SE-3, 22 FEB 2024 to 21 MAR 2024

SE-3, 22 FEB 2024 to 21 MAR 2024

## ARRIVAL ROUTE DESCRIPTION

**PAHOKEE TRANSITION (PHK.GOOFY7):** From over PHK VOR/DME on PHK R-342 to BAIRN INT.

Thence . . .

**PALM BEACH TRANSITION (PBI.GOOFY7):** From over PBI VORTAC on PBI R-327 to BAIRN INT.

Thence . . .

**TREASURE TRANSITION (TRV.GOOFY7):** From over TRV VORTAC on TRV R-303 to BAIRN INT.

Thence . . .

### ORLANDO INTL:

. . . Rwy 17/18: From over BAIRN INT on ORL VORTAC R-162 to ODDEL INT. Depart ODDEL INT heading 360° for vector to final approach course.

. . . Rwy 35/36: Depart BAIRN INT heading 360° for vector to final approach course.

**LEESBURG INTL:** . . . From over BAIRN INT on ORL VORTAC R-162 to SABOT INT. Expect RADAR vectors to the airport.

**ALL OTHER AIRPORTS:** . . . From over BAIRN INT on ORL VORTAC R-162 to SABOT INT.

Expect RADAR vectors to final approach course.

# GOOFY SEVEN ARRIVAL

ORLANDO, FLORIDA

(BAIRN.GOOFY7) 27APR17

**MINEE FIVE ARRIVAL**  
 (MINEE.MINEE5) 13JAN11

**MINEE FIVE ARRIVAL**  
 23222

AL-571 (FAA)

ORLANDO, FLORIDA

ORLANDO APP CON  
 134.05 339.8  
 ISM ATIS  
 128.775  
 LEE ATIS  
 134.325  
 MCO D-ATIS ARR  
 121.25  
 ORL ATIS  
 127.25  
 SFB ATIS  
 125.975  
 TIX ATIS  
 120.625

**ANDRO**  
 N28°02.95' - W81°53.14'  
TURBOJET VERTICAL NAVIGATION PLANNING INFORMATION

Orlando Intl Landing South: Expect clearance to cross at 13,000'.  
 Orlando Intl Landing North: Expect clearance to cross at 13,000' and 250 KTS.

**ORLANDO**  
 112.2 ORL :---:  
 Chan 59  
 N28°32.56'  
 W81°20.10'

**MOANS**  
 N27°54.83' - W81°44.91'  
TURBOJET VERTICAL NAVIGATION PLANNING INFORMATION

Orlando Intl Landing South: Expect clearance to cross at 13,000'.  
 Orlando Intl Landing North: Expect clearance to cross at 10,000' and 250 KTS.

**ST PETERSBURG**  
 116.4 PIE :---:  
 Chan 111  
 N27°54.47'  
 W82°41.06'  
 L-21-24, H-8

**LAKELAND**  
 116.0 LAL :---:  
 Chan 107  
 N27°59.17'  
 W82°00.83'

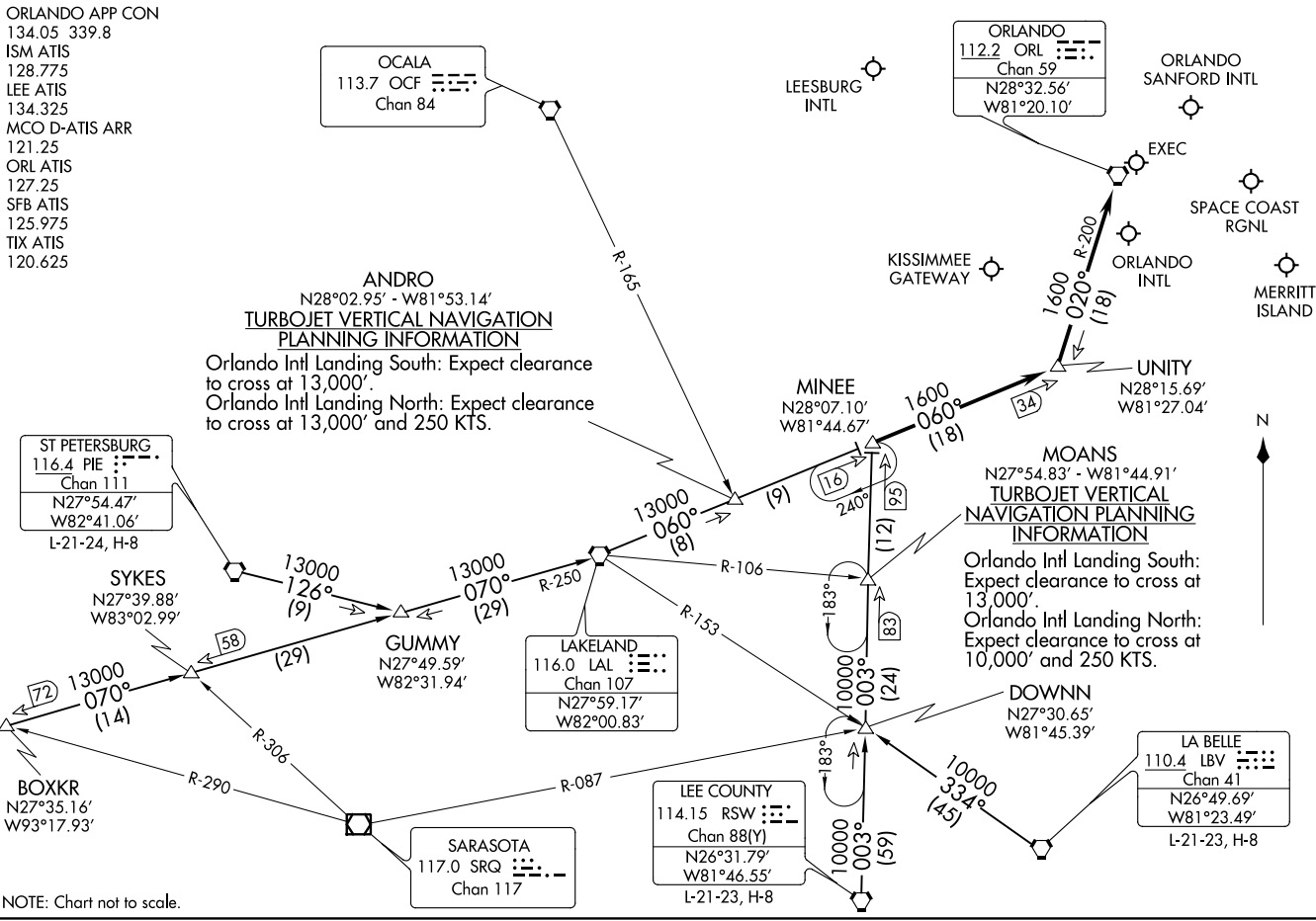
**LEE COUNTY**  
 114.15 RSW :---:  
 Chan 88(Y)  
 N26°31.79'  
 W81°46.55'  
 L-21-23, H-8

**LA BELLE**  
 110.4 LBV :---:  
 Chan 41  
 N26°49.69'  
 W81°23.49'  
 L-21-23, H-8

**SARASOTA**  
 117.0 SRQ :---:  
 Chan 117

**BOXKR**  
 N27°35.16'  
 W93°17.93'

NOTE: Chart not to scale.



ORLANDO, FLORIDA

ARRIVAL ROUTE DESCRIPTION

BOXKR TRANSITION (BOXKR.MINEE5): From over BOXKR INT via LAL R-250 to LAL VORTAC, then via LAL R-060 to MINEE INT. Thence. . . .

LA BELLE TRANSITION (LBV.MINEE5): From over LBV VORTAC via LBV R-334 to DOWNN INT, then via RSW R-003 to MINEE INT. Thence. . . .

LEE COUNTY TRANSITION (RSW.MINEE5): From over RSW VORTAC via RSW R-003 to MINEE INT. Thence. . . .

ST. PETERSBURG TRANSITION (PIE.MINEE5): From over PIE VORTAC via PIE R-126 to GUMMY INT, then via LAL R-250 to LAL VORTAC, then via LAL R-060 to MINEE INT. Thence. . . .

. . . . From over MINEE INT via LAL R-060 to UNITY INT, then via ORL R-200 to ORL VORTAC.

LEESBURG INTL: Expect radar vectors to airport after UNITY INT.

ALL OTHER AIRPORTS: Expect radar vectors to final approach course after UNITY INT.

SE-3, 22 FEB 2024 to 21 MAR 2024

SE-3, 22 FEB 2024 to 21 MAR 2024