

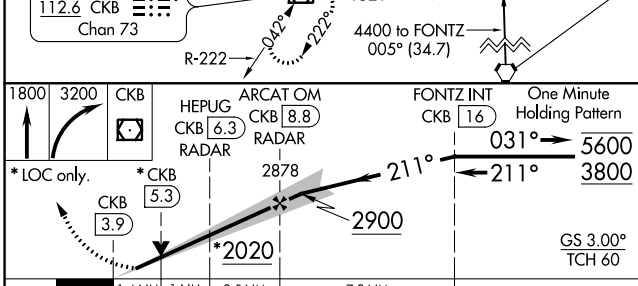
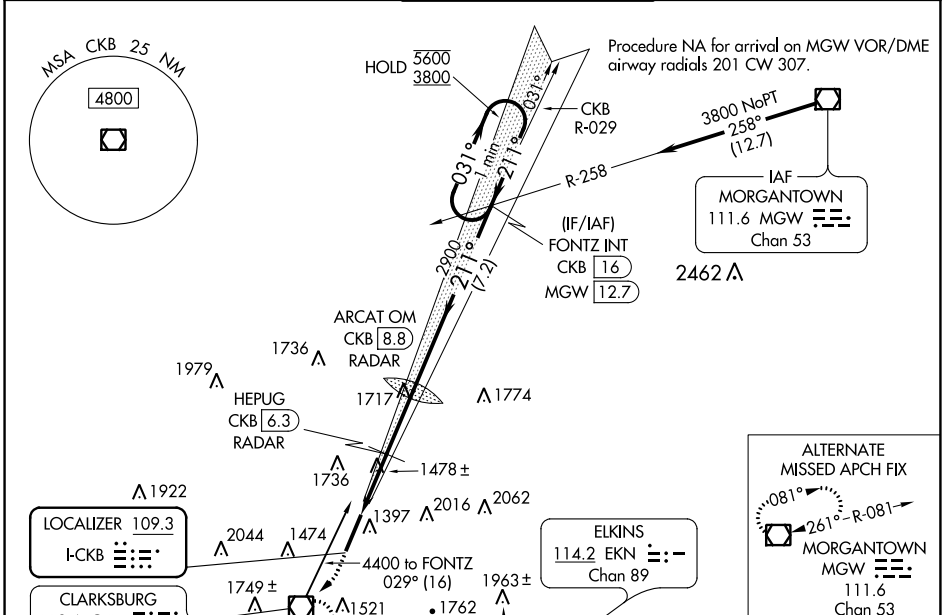
LOC I-CKB	APP CRS	Rwy Ldg	7130
109.3	211°	TDZE	1224
		Apt Elev	1224

ILS or LOC RWY 21

NORTH CENTRAL WEST VIRGINIA (CKB)

For inop ALS, increase S-LOC 21 Cat C/D visibility to 2½ SM, and HEPUG fix minimums Cat C/D visibility to 1½ SM. DME from CKB VOR/DME. Autopilot coupled approach NA below 2000.	MALSR	MISSED APPROACH: Climb to 1800 then climbing right turn to 3200 direct CKB VOR/DME and hold, continue climb-in-hold to 3200.

ATIS 127.825	CLARKSBURG APP CON ★ 121.15 284.65	CLARKSBURG TOWER ★ 126.7 (CTAF) 0 257.925	GND CON 121.9	UNICOM 123.0
------------------------	--	---	-------------------------	------------------------



ELEV	1224	TDZE	1224
REIL Rwy 3			
HIRL Rwy 3-21			
FAF to MAP 4.9 NM			
Knots	60	90	120 150 180
Min:Sec	4:54	3:16	2:27 1:58 1:38

CATEGORY	A	B	C	D
S-ILS 21		1424/24	200 (200-½)	
S-LOC 21	2020/24 796 (800-½)	2020/40 796 (800-¾)	2020-1¾	796 (800-1¾)
CIRCLING	2020-1 796 (800-1)	2040-1¼ 816 (900-1¼)	2320-3	1096 (1100-3)
HEPUG FIX MINIMUMS (DME or RADAR REQUIRED)				
S-LOC 21	1740/24	516 (600-½)	1740/55	516 (600-1)
CIRCLING	1940-1 716 (800-1)	2040-1¼ 816 (900-1¼)	2320-3	1096 (1100-3)

NE-4, 22 FEB 2024 to 21 MAR 2024

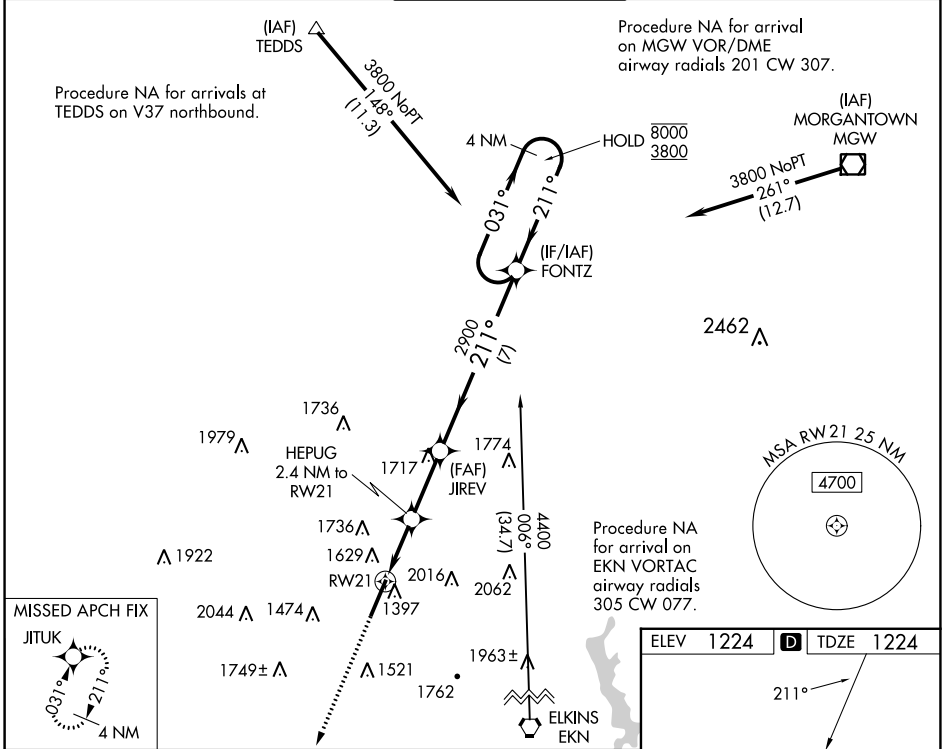
NE-4, 22 FEB 2024 to 21 MAR 2024

WAAS CH 82504 W21A	APP CRS 211°	Rwy Idg TDZE Apt Elev	7130 1224 1224
--	------------------------	-----------------------------	---

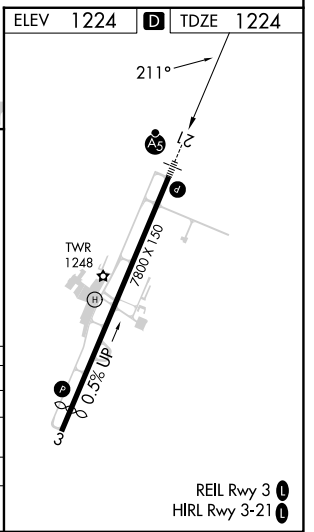
RNAV (GPS) RWY 21

NORTH CENTRAL WEST VIRGINIA (CKB)

RNP APCH.		MALSR		MISSED APPROACH: Climb to 3900 direct JITUK and hold.	
<p>▼ For uncompensated Baro-VNAV systems, LNAV/VNAV NA below -16°C or above 54°C. For inop ALS, increase LNAV Cats C and D visibility to 1½ SM.</p>					
ATIS 127.825	CLARKSBURG APP CON ★ 121.15 284.65	CLARKSBURG TOWER ★ 126.7 (CTAF) 257.925	GND CON 121.9	UNICOM 123.0	



3900	JITUK	JIREV	FONTZ	4 NM Holding Pattern
↑		HEPUG 2.4 NM to RW21	2900	031° → 8000 ← 211° 3800
*LNAV only.				
<p>RW21: *1.6 NM to RW21, *2020, 2900, GP 3.00° TCH 60</p>				
CATEGORY	A	B	C	D
LPV DA		1424/24	200 (200-½)	
LNAV/VNAV DA		1786-1⅜	562 (600-1⅜)	
LNAV MDA	1800/24	576 (600-½)	1800-1¼	576 (600-1¼)
CIRCLING	1940-1 716 (800-1)	2040-1¼ 816 (900-1¼)	2320-3	1096 (1100-3)



NE-4, 22 FEB 2024 to 21 MAR 2024

NE-4, 22 FEB 2024 to 21 MAR 2024

VOR/DME CKB 112.6 Chan 73	APP CRS 042°	Rwy Idg TDZE Apt Elev N/A N/A 1224
---	------------------------	--

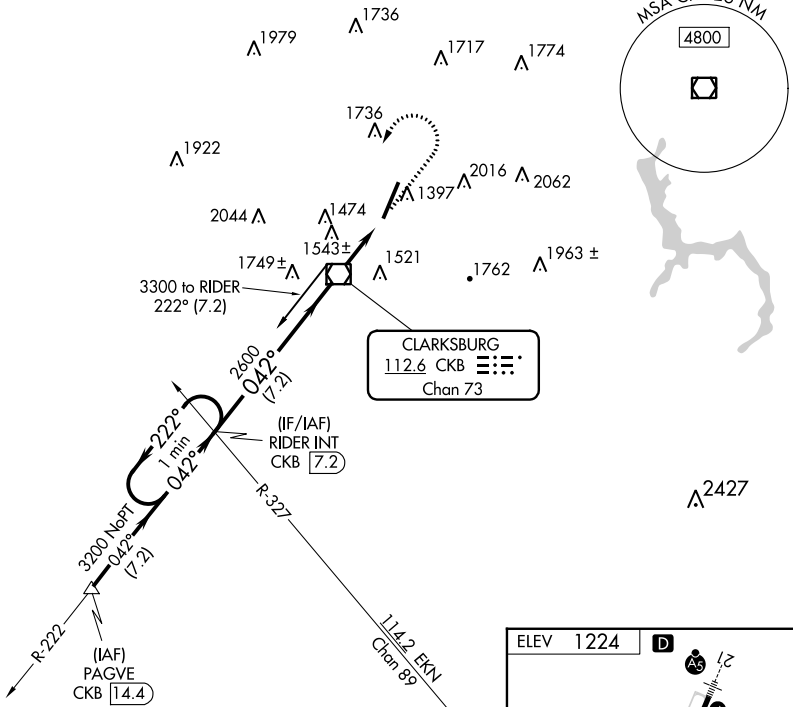
VOR-A

NORTH CENTRAL WEST VIRGINIA (CKB)

▼ When local altimeter setting not received, Use Morgantown altimeter
▲

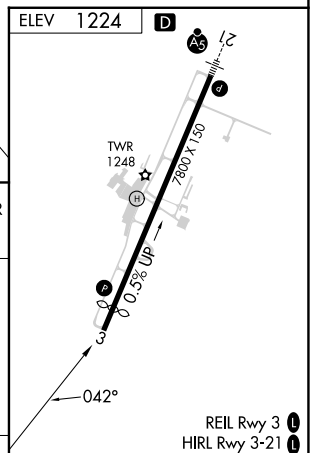
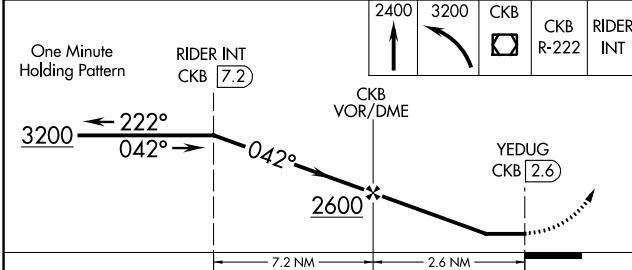
MISSED APPROACH: Climb to 2400, then climbing left turn to 3200 direct CKB VOR/DME and via CKB VOR/DME R-222 to RIDER INT/CKB 7.2 DME and hold.

ATIS 127.825	CLARKSBURG APP CON* 121.15 284.65	CLARKSBURG TOWER* 126.7 (CTAF) 257.925	GND CON 121.9	UNICOM 123.0
------------------------	---	--	-------------------------	------------------------



NE-4, 22 FEB 2024 to 21 MAR 2024

NE-4, 22 FEB 2024 to 21 MAR 2024



CATEGORY	A	B	C	D	FAF to MAP 2.6 NM					
	1940-1 716 (800-1)	2040-1¼ 816 (900-1¼)	2320-3	1096 (1100-3)	Knots	60	90	120	150	180
C CIRCLING					Min:Sec	2:36	1:44	1:18	1:02	0:52