

LOC/DME I-CIC <b>111.3</b> Chan 50	APP CRS <b>131°</b>	Rwy Idg TDZE Apt Elev	<b>6724</b> <b>240</b> <b>240</b>
--	------------------------	-----------------------------	---

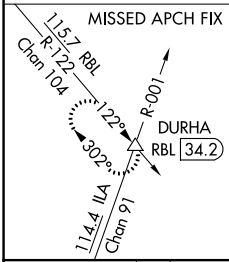
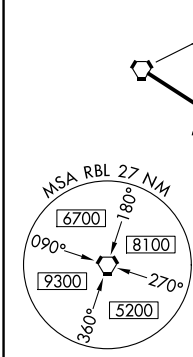
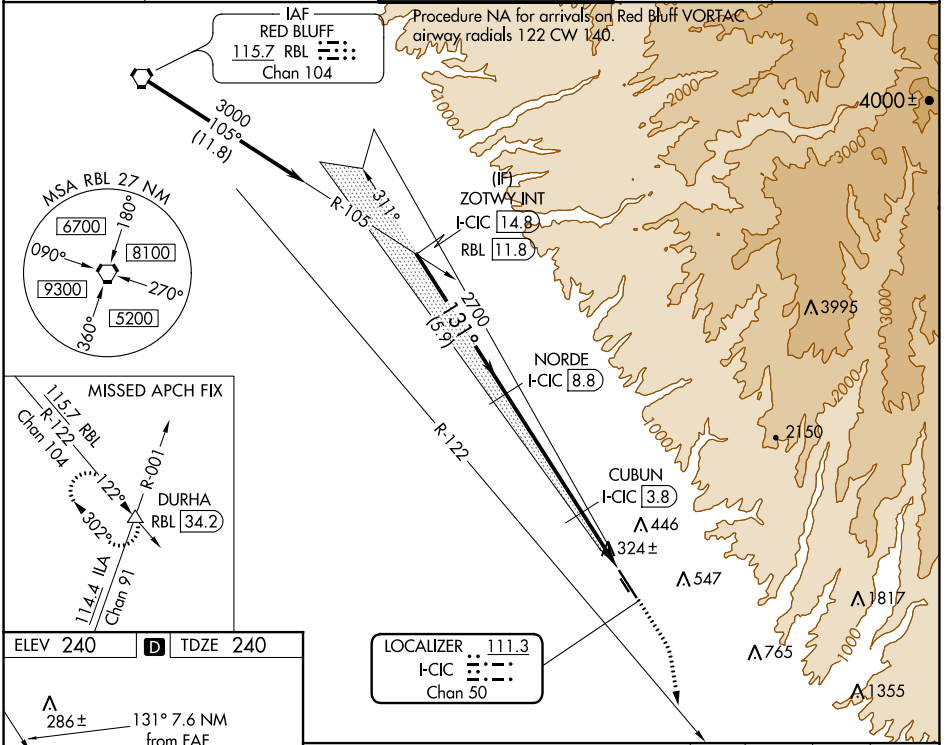
# ILS or LOC RWY 13L

CHICO MUNI (CIC)

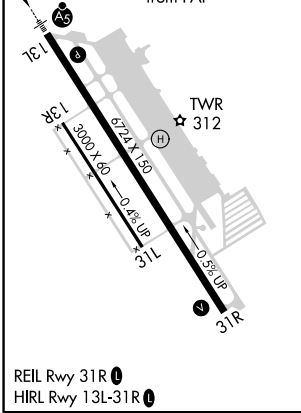
DME required.  
 Circling NA east of Rwy 13L/31R.

MALSR  
 MISSED APPROACH: Climb to 1000 then climbing right turn to 6000 on heading 155° and RBL R-122 to DURHA INT/ RBL 34.2 DME and hold, continue climb-in-hold to 6000.

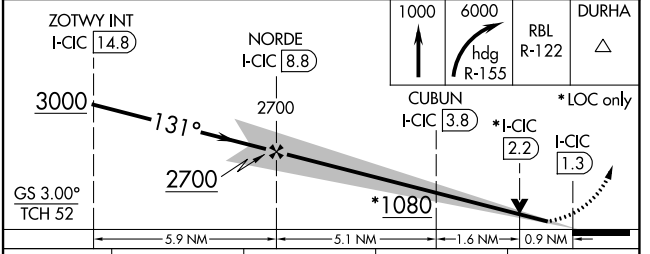
ATIS <b>119.675</b>	OAKLAND CENTER <b>132.2 350.3</b>	CHICO TOWER ★ <b>121.0 (CTAF) 239.3</b>	GND CON <b>121.9</b>	UNICOM <b>122.95</b>
------------------------	--------------------------------------	--	-------------------------	-------------------------



ELEV 240	<b>D</b>	TDZE 240
----------	----------	----------



REIL Rwy 31R  
 HIRL Rwy 13L-31R



CATEGORY	A	B	C	D
S-ILS 13L		440-½	200 (200-½)	
S-LOC 13L		580-½	340 (400-½)	
<b>C</b> CIRCLING	640-1 400 (400-1)	700-1 460 (500-1)	700-1½ 460 (500-1½)	800-2 560 (600-2)

SW-2, 30 DEC 2021 to 27 JAN 2022

SW-2, 30 DEC 2021 to 27 JAN 2022

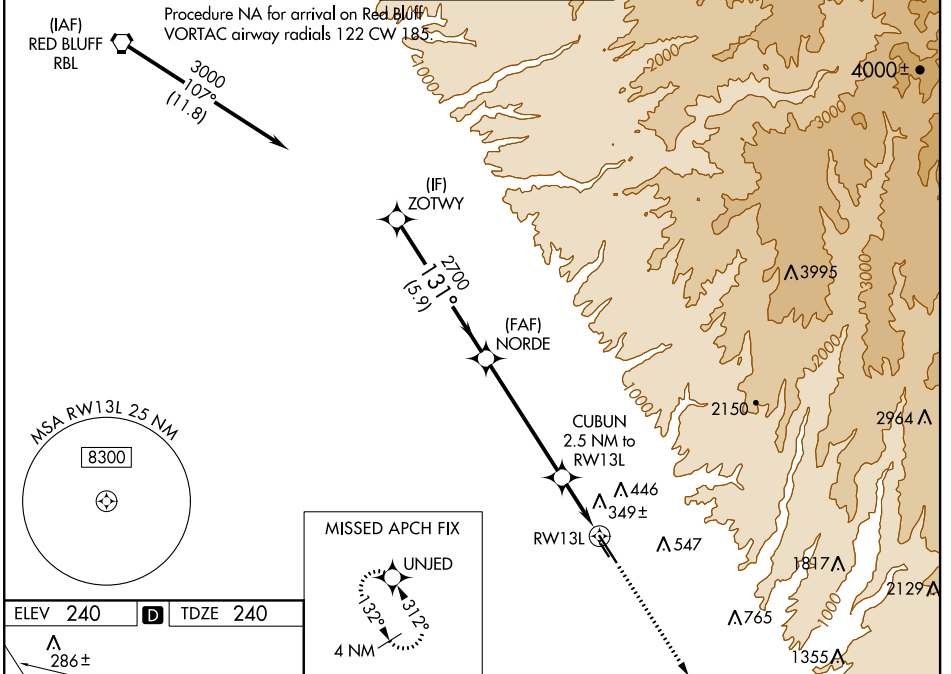
WAAS CH <b>65912</b> <b>W13A</b>	APP CRS <b>131°</b>	Rwy Idg <b>6724</b> TDZE <b>240</b> Apt Elev <b>240</b>
--	------------------------	---

# RNAV (GPS) RWY 13L

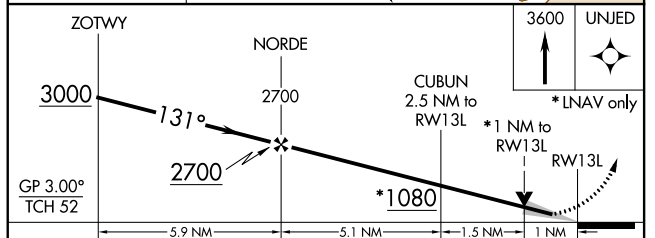
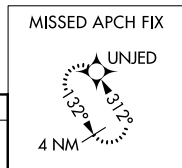
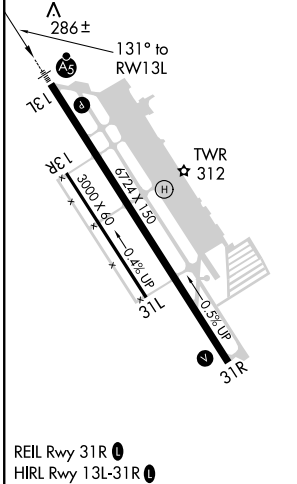
CHICO MUNI (CIC)

RNP APCH.	MALSR 	MISSED APPROACH: Climb to 3600 direct UNJED and hold, continue climb-in-hold to 3600.
<p><b>⚠</b> Circling NA east of Rwy 13L-31R. For uncompensated Baro-VNAV systems, LNAV/VNAV NA below -15°C or above 54°C. For inop ALS, increase LNAV/VNAV all Cts visibility to 7/8 SM, and increase LNAV Cts C/D visibility to 1 SM.</p>		

ATIS <b>119.675</b>	OAKLAND CENTER <b>132.2 350.3</b>	CHICO TOWER * <b>121.0 (CTAF) 239.3</b>	GND CON <b>121.9</b>	UNICOM <b>122.95</b>
------------------------	--------------------------------------	--	-------------------------	-------------------------



ELEV <b>240</b>	<b>D</b>	TDZE <b>240</b>
-----------------	----------	-----------------



CATEGORY	A	B	C	D
LPV DA		440-1/2	200 (200-1/2)	
LNAV/VNAV DA		530-1/2	290 (300-1/2)	
LNAV MDA	600-1/2	360 (400-1/2)	600-5/8	360 (400-5/8)
<b>C</b> CIRCLING	640-1 400 (400-1)	700-1 460 (500-1)	700-1 1/2 460 (500-1 1/2)	800-2 560 (600-2)

SW-2, 30 DEC 2021 to 27 JAN 2022

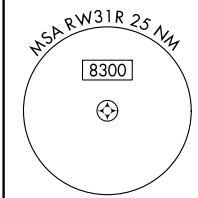
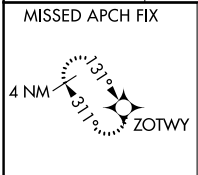
SW-2, 30 DEC 2021 to 27 JAN 2022

WAAS CH <b>77912</b> <b>W31A</b>	APP CRS <b>311°</b>	Rwy Idg <b>6724</b> TDZE <b>226</b> Apt Elev <b>240</b>
--	------------------------	---

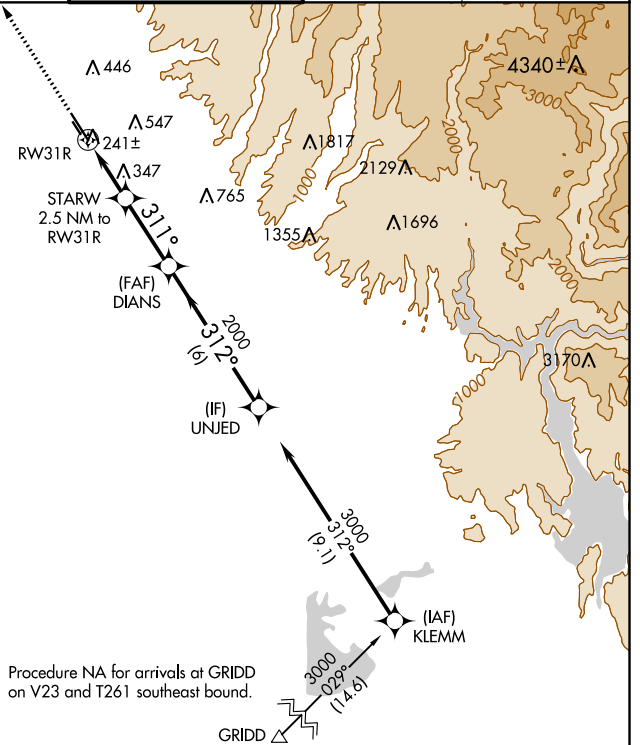
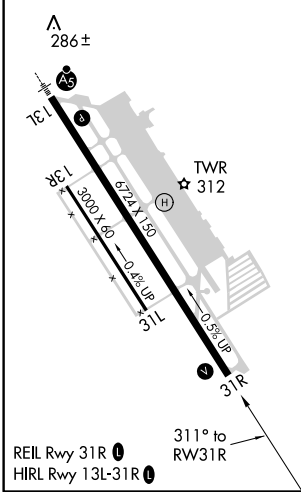
# RNAV (GPS) RWY 31R

CHICO MUNI (CIC)

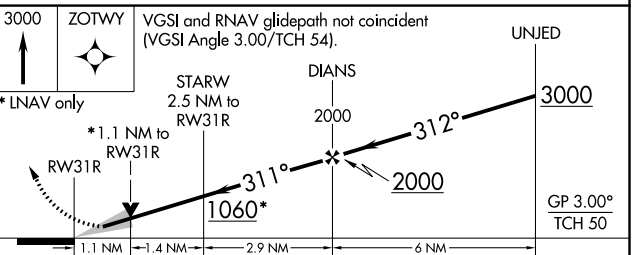
RNP APCH.		MISSED APPROACH: Climb to 3000 direct ZOTWY and hold.	
ATIS <b>119.675</b>	OAKLAND CENTER <b>132.2 350.3</b>	CHICO TOWER ★ <b>121.0 (CTAF) 239.3</b>	GND CON <b>121.9</b>
		UNICOM <b>122.95</b>	



ELEV <b>240</b>	<b>D</b>	TDZE <b>226</b>
-----------------	----------	-----------------



Procedure NA for arrivals at GRIDD on V23 and T261 southeast bound.



CATEGORY	A	B	C	D
LPV DA	476-1 250 (300-1)			
LNAV/VNAV DA	733-1¾ 507 (500-1¾)			
LNAV MDA	600-1 374 (400-1)			600-1¼ 374 (400-1¼)

SW-2, 30 DEC 2021 to 27 JAN 2022

SW-2, 30 DEC 2021 to 27 JAN 2022