

WAAS CH 40127 W13A	APP CRS 131°	Rwy Idg TDZE 45 Apt Elev 45	5107
--	------------------------	---	-------------

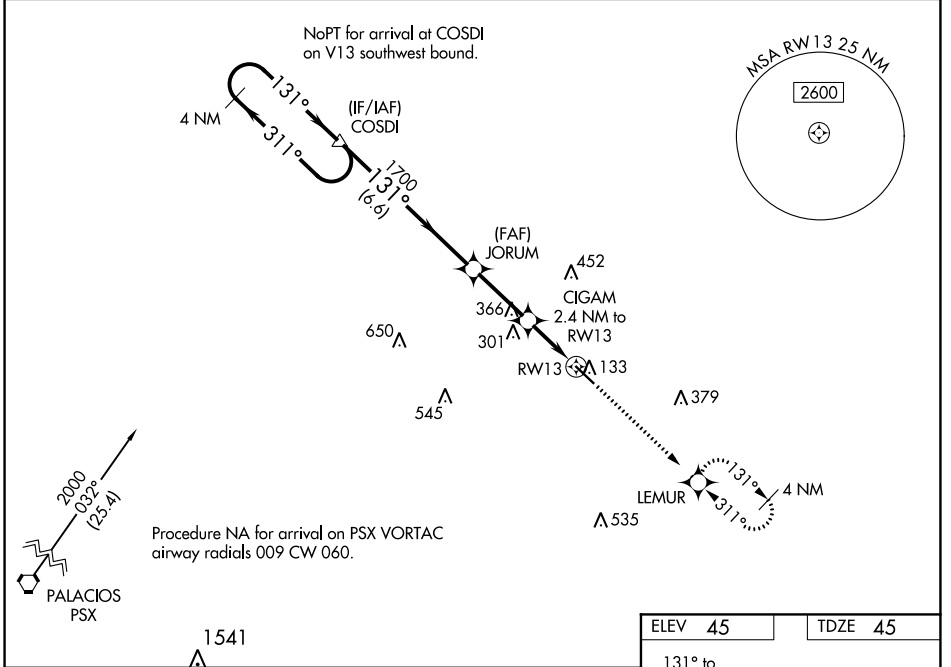
RNAV (GPS) RWY 13

BAY CITY RGNL (BYY)

⚠ For uncompensated Baro-VNAV systems, LNAV/VNAV NA below -15°C (5°F) or above 54°C (130°F). Rwy 13, 31 helicopter visibility reduction below 1 SM NA. RADAR required. DME/DME RNP-0.3 NA. When local altimeter setting not received, use Palacios altimeter setting and increase all DA 63 feet and all MDA 80 feet; increase LNAV visibility Cat C ¼ mile. VDP and Baro-VNAV N/A when using Palacios altimeter setting.

MISSED APPROACH: Climb to 2000 direct LEMUR and hold.

AWOS-3 118.075	HOUSTON CENTER 128.6 360.8	UNICOM 122.8 (CTAF) 0
--------------------------	--------------------------------------	---------------------------------



	ELEV 45	TDZE 45		
	<p>Procedure NA for arrival on PSX VORTAC airway radials 009 CW 060.</p> <p>Palacios PSX 2000 -032° (25.4)</p>			
	<p>1541</p> <p>VGSI and RNAV glidepath not coincident (VGSI Angle 3.00/TCH 40).</p> <p>2000 LEMUR</p> <p>*LNAV only.</p> <p>+0.8 NM to RWY 13</p>			
	<p>4 NM Holding Pattern</p> <p>COSDI</p> <p>JORUM</p> <p>CIGAM 2.4 NM to RWY 13</p> <p>RWY 13</p> <p>5107 X.75</p>			
	<p>GP 3.00° TCH 45</p> <p>6.6 NM</p> <p>2.7 NM</p> <p>1.6</p> <p>0.8</p>			
CATEGORY	A	B	C	D
LPV DA	295-1	250 (300-1)		NA
LNAV/VNAV DA	295-1	250 (300-1)		NA
LNAV MDA	460-1	415 (500-1)	460-1½ 415 (500-1½)	NA
C CIRCLING	500-1	455 (500-1)	620-1½ 575 (600-1½)	NA
	<p>REIL Rwy 13 0</p> <p>REIL Rwy 31</p> <p>MIRL Rwy 13-31 0</p>			

SC-5, 27 JAN 2022 to 24 FEB 2022

SC-5, 27 JAN 2022 to 24 FEB 2022

WAAS CH 78326 W31A	APP CRS 311°	Rwy Idg TDZE Apt Elev	5107 44 45
--	------------------------	-----------------------------	---------------------------------------

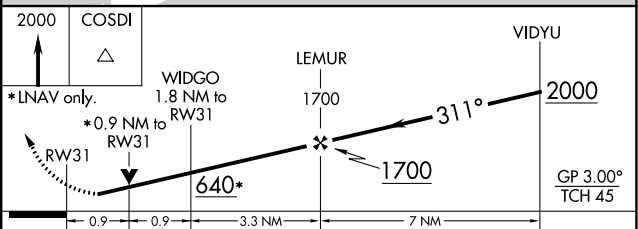
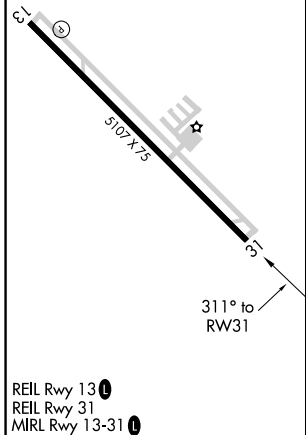
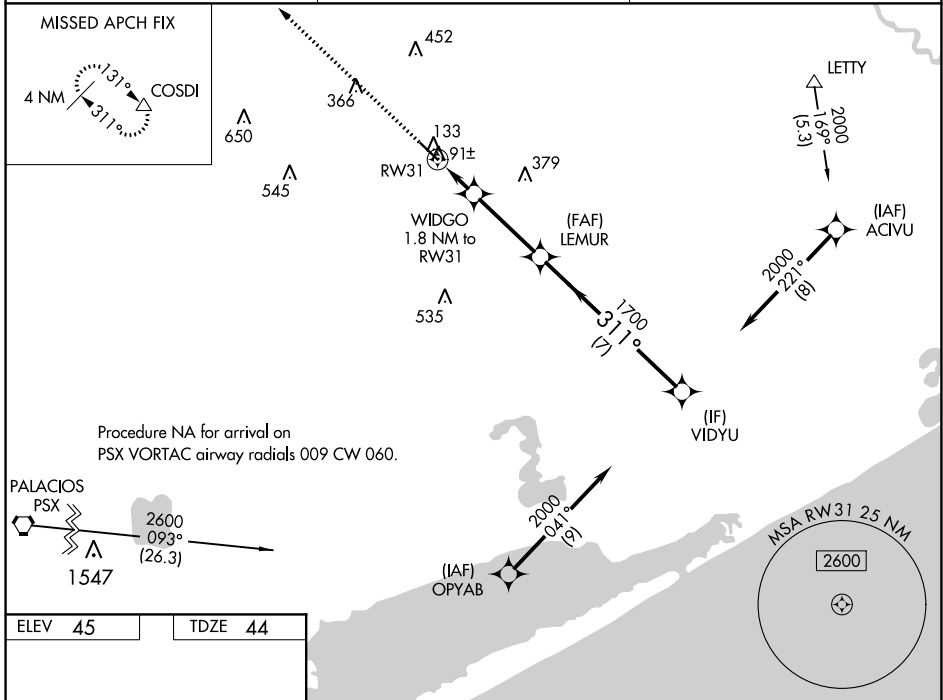
RNAV (GPS) RWY 31

BAY CITY RGNL (BY Y)

⚠ For uncompensated Baro-VNAV systems, LNAV/VNAV NA below -15°C (5°F) or above 54°C (130°F). Rwy 13, 31 helicopter visibility reduction below 1 SM NA. DME/DME RNP-0.3 NA. When local altimeter setting not received, use Palacios altimeter setting and increase all DA 63 feet and all MDA 80 feet; increase LNAV visibility Cat C ¼ mile. VDP and Baro-VNAV N/A when using Palacios altimeter setting.

MISSED APPROACH: Climb to 2000 direct COSDI and hold.

AWOS-3 118.075	HOUSTON CENTER 128.6 360.8	UNICOM 122.8 (CTAF) 0
--------------------------	--------------------------------------	---------------------------------



CATEGORY	A	B	C	D
LPV DA		294-1 250 (300-1)		NA
LNAV/VNAV DA		294-1 250 (300-1)		NA
LNAV MDA		360-1 316 (400-1)		NA
C CIRCLING	500-1	455 (500-1)	620-1½ 575 (600-1½)	NA

SC-5, 27 JAN 2022 to 24 FEB 2022

SC-5, 27 JAN 2022 to 24 FEB 2022

VORTAC PSX 117.3 Chan 120	APP CRS 054°	Rwy Idg TDZE Apt Elev	N/A N/A 45
---	------------------------	-----------------------------	-------------------------

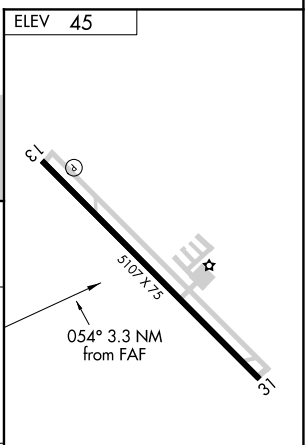
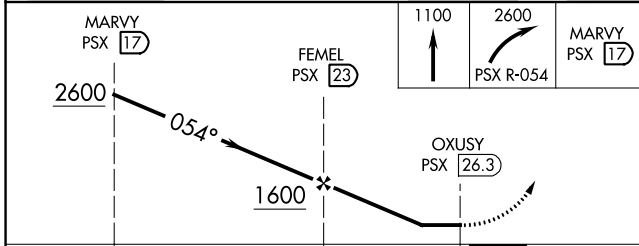
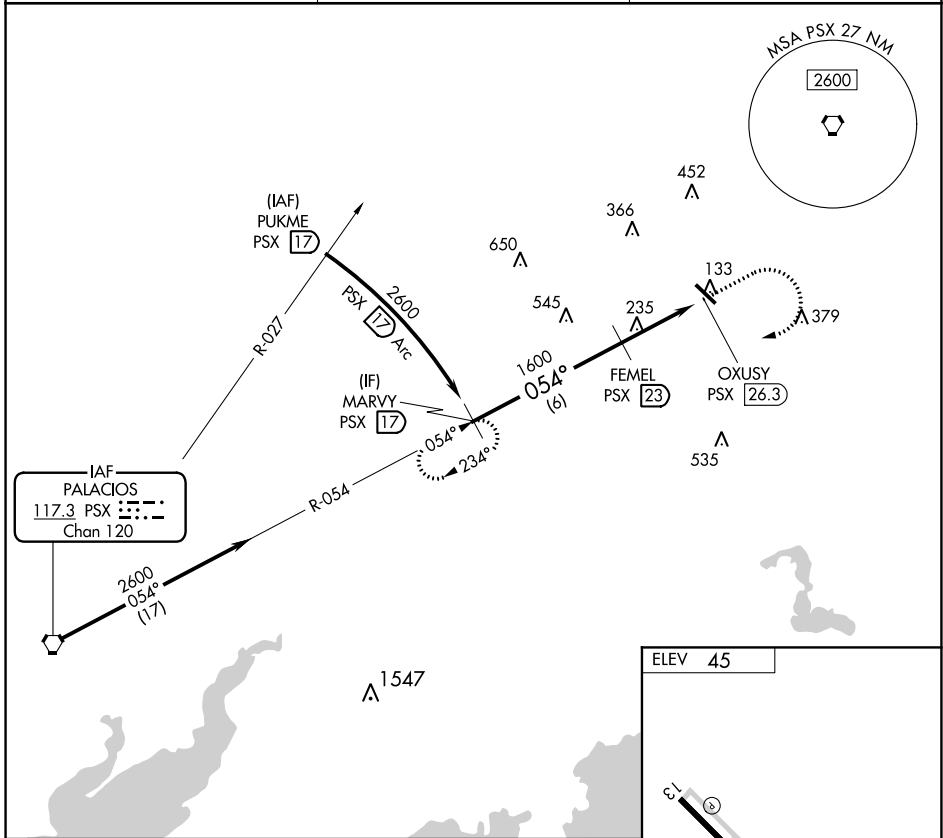
VOR-A

BAY CITY RGNL (BY Y)

▼ Rwy 13, 31 helicopter visibility reduction below 1 SM NA.
▲ DME required. When local altimeter setting not received, use Palacios altimeter setting and increase all MDA 80 feet.

MISSED APPROACH: Climb to 1100 then climbing right turn to 2600 on PSX VORTAC R-054 to MARVY/17 DME and hold.

AWOS-3 118.075	HOUSTON CENTER 128.6 360.8	UNICOM 122.8 (CTAF) 0
--------------------------	--------------------------------------	---------------------------------



CATEGORY	A	B	C	D
☐ CIRCLING	1080-1¼ 1035 (1100-1¼)	1080-1½ 1035 (1100-1½)	1080-3 1035 (1100-3)	NA

REIL Rwy 13 **0**
 REIL Rwy 31 **0**
 MRL Rwy 13-31 **0**

SC-5, 27 JAN 2022 to 24 FEB 2022

SC-5, 27 JAN 2022 to 24 FEB 2022