

LOC/DME I-BTC <b>111.15</b> Chan <b>48 (Y)</b>	APP CRS <b>139°</b>	Rwy ldg <b>10000</b> TDZE <b>442</b> Apt Elev <b>459</b>
--	------------------------	--

# ILS or LOC RWY 14L

SCOTT AFB/MIDAMERICA ST LOUIS (BLV)

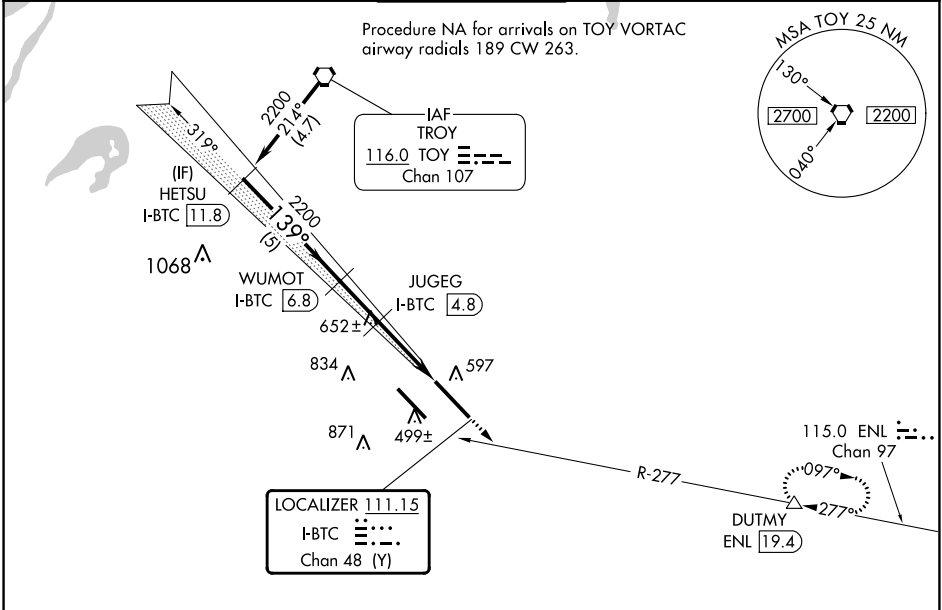
DME required.

**▲** Rwy 14L helicopter visibility reduction below RVR 4000 NA.

ASR

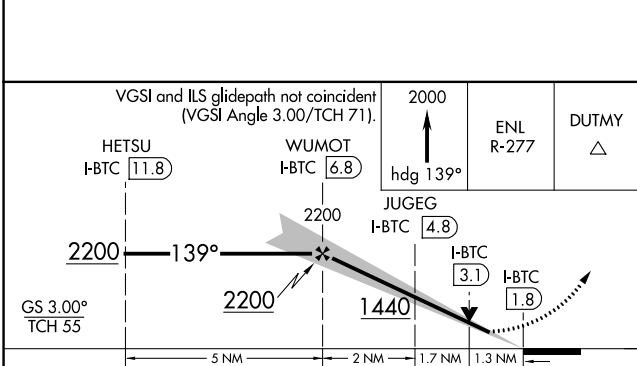
MISSED APPROACH: Climb to 2000 on heading 139° and on ENL VORTAC R-277 to DUTMY/ENL VORTAC 19.4 DME and hold.

ATIS ★ <b>128.7 256.7</b>	ST LOUIS APP CON <b>125.2 281.5</b>	SCOTT TOWER <b>128.25 253.5</b>	GND CON <b>119.2 275.8</b>	CLNC DEL <b>119.875 263.025</b>
------------------------------	--	------------------------------------	-------------------------------	------------------------------------

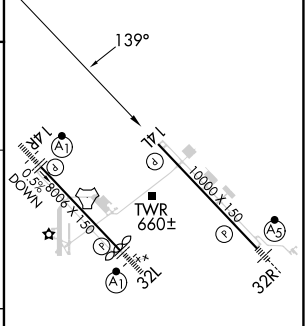


EC-3, 22 FEB 2024 to 21 MAR 2024

EC-3, 22 FEB 2024 to 21 MAR 2024



ELEV 459	<b>D</b> TDZE 442
----------	-------------------



CATEGORY	A	B	C	D	E
S-ILS 14L	694/40		252 (300-¾)		
S-LOC 14L	920/55	478 (500-1)	920-1⅜		478 (500-1⅝)
<b>C</b> CIRCLING	1000-1 541 (600-1)	1120-1 661 (700-1)	1240-2¼ 781 (800-2¼)	1240-2½ 781 (800-2½)	1240-2¾ 781 (800-2¾)

REIL Rwy 14L

HIRL Rws 14R-32L and 14L-32R

LOC I- <b>OXK</b> <b>109.9</b>	APP CRS <b>139°</b>	Rwy Idg <b>8006</b> TDZE <b>459</b> Apt Elev <b>459</b>
-----------------------------------	------------------------	---

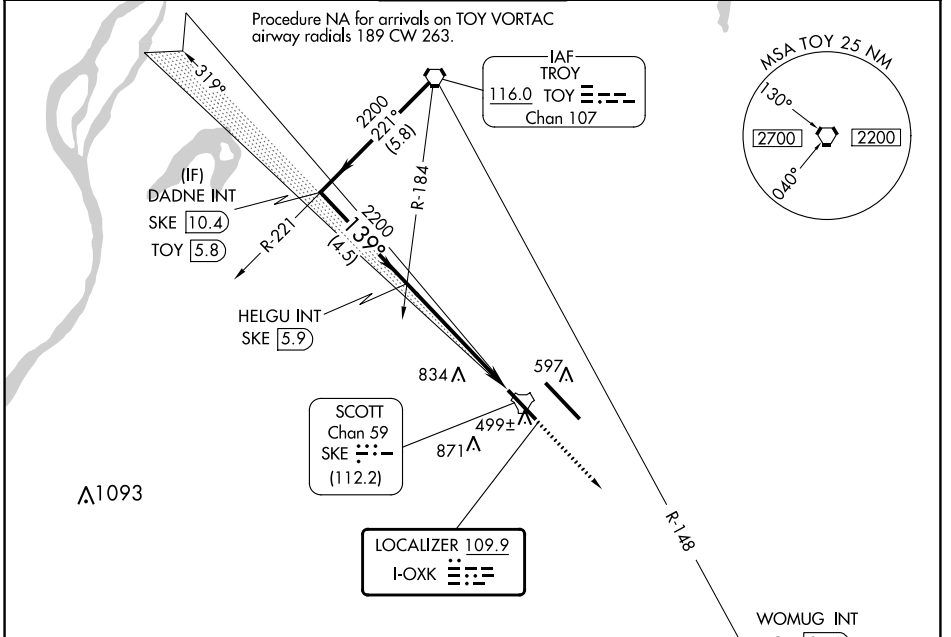
# ILS or LOC RWY 14R

SCOTT AFB/MIDAMERICA ST LOUIS (BLV)

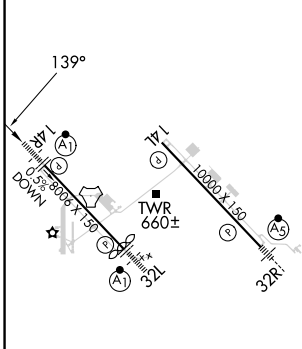
**⚠** For inop ALS, increase S-ILS 14R Cat E visibility to RVR 4000 and S-LOC 14R Cat E visibility to 1 3/4 mile. DME from SKE TACAN. DME use requires simultaneous reception of I-OXK and SKE DME.  
**⚠** ASR \*RVR 1800 authorized with use of FD or AP or HUD to DA.

**ALSIF-1**  
**MISSED APPROACH:** Climb to 2200 then on TOY VORTAC R-148 to WOMUG INT/TOY 25.6 DME and hold.

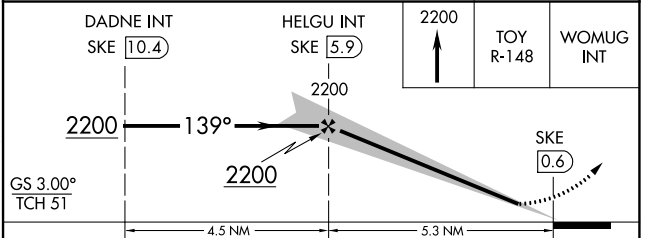
ATIS ★ <b>128.7 256.7</b>	ST LOUIS APP CON <b>125.2 281.5</b>	SCOTT TOWER <b>128.25 253.5</b>	GND CON <b>119.2 275.8</b>	CLNC DEL <b>119.875 263.025</b>
------------------------------	--	------------------------------------	-------------------------------	------------------------------------



ELEV <b>459</b>	<b>D</b>	TDZE <b>459</b>
-----------------	----------	-----------------



HIRL RWYS 14L-32R and 14R-32L REIL RWY 14L FAF to MAP 5.3 NM					
Knots	60	90	120	150	180
Min:Sec	5:18	3:32	2:39	2:07	1:46



CATEGORY	A	B	C	D	E
S-ILS 14R*	659/24 200 (200-1/2)				
S-LOC 14R	1040/24	581 (600-1/2)	1040-1 1/4 581 (600-1 1/4)		
<b>C</b> CIRCLING	1040-1 581 (600-1)	1120-1 661 (700-1)	1240-2 1/4 781 (800-2 1/4)	1240-2 1/2 781 (800-2 1/2)	1240-2 3/4 781 (800-2 3/4)

EC-3, 22 FEB 2024 to 21 MAR 2024

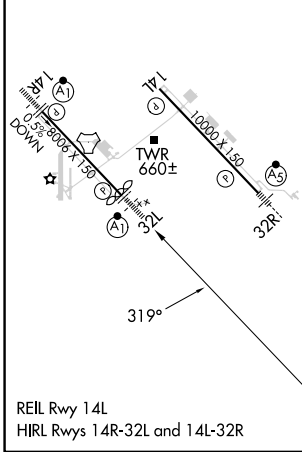
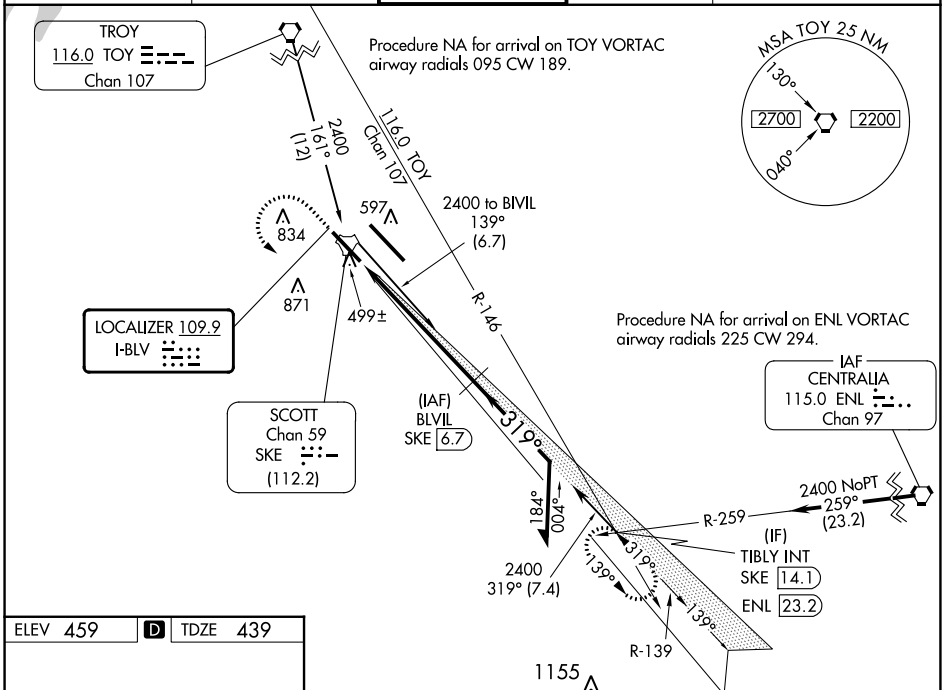
EC-3, 22 FEB 2024 to 21 MAR 2024

LOC I-BLV <b>109.9</b>	APP CRS <b>319°</b>	Rwy Idg <b>7822</b>
		TDZE <b>439</b>
		Apt Elev <b>459</b>

# ILS or LOC RWY 32L

SCOTT AFB/MIDAMERICA ST LOUIS (BLV)

DME required.		ALSF-1 		MISSED APPROACH: Climb to 1500 then climbing left turn to 2400 direct SKE TACAN and on SKE R-139 to TIBLY INT/ SKE 14.1 DME and hold.	
<p><b>▲</b> For inop ALS, increase S-ILS 32L Cat E visibility to RVR 4000 and increase S-LOC 32L Cat C/D/E visibility to 1/2 SM. Procedure turn NA for Cat E aircraft.</p> <p><b>▲</b> DME from SKE TACAN. Simultaneous reception of I-BLV and SKE DME required.</p> <p><b>ASR</b> *RVR 1800 authorized with use of FD or AP or HUD to DA.</p>		<p>ATIS * <b>128.7 256.7</b></p>		<p>ST LOUIS APP CON <b>125.2 281.5</b></p>	
<p>SCOTT TOWER <b>128.25 253.5</b></p>		<p>GND CON <b>119.2 275.8</b></p>		<p>CLNC DEL <b>119.875 263.025</b></p>	



VGSI and ILS glidepath not coincident (VGSI Angle 3.00/TCH 50). Remain within 10 NM

1500	2400	SKE	SKE R-139	TIBLY INT	BLVIL SKE (6.7)																													
<table border="1"> <tr> <td>CATEGORY</td> <td>A</td> <td>B</td> <td>C</td> <td>D</td> <td>E</td> </tr> <tr> <td>S-ILS 32L*</td> <td colspan="5">639/24 200 (200-1/2)</td> </tr> <tr> <td>S-LOC 32L</td> <td>920/24</td> <td>481 (500-1/2)</td> <td colspan="3">920/50 481 (500-1)</td> </tr> <tr> <td rowspan="2">CIRCLING</td> <td>1000-1</td> <td>1120-1</td> <td>1240-2 1/4</td> <td>1240-2 1/2</td> <td>1240-2 3/4</td> </tr> <tr> <td>541 (600-1)</td> <td>661 (700-1)</td> <td>781 (800-2 1/4)</td> <td>781 (800-2 1/2)</td> <td>781 (800-2 3/4)</td> </tr> </table>						CATEGORY	A	B	C	D	E	S-ILS 32L*	639/24 200 (200-1/2)					S-LOC 32L	920/24	481 (500-1/2)	920/50 481 (500-1)			CIRCLING	1000-1	1120-1	1240-2 1/4	1240-2 1/2	1240-2 3/4	541 (600-1)	661 (700-1)	781 (800-2 1/4)	781 (800-2 1/2)	781 (800-2 3/4)
CATEGORY	A	B	C	D	E																													
S-ILS 32L*	639/24 200 (200-1/2)																																	
S-LOC 32L	920/24	481 (500-1/2)	920/50 481 (500-1)																															
CIRCLING	1000-1	1120-1	1240-2 1/4	1240-2 1/2	1240-2 3/4																													
	541 (600-1)	661 (700-1)	781 (800-2 1/4)	781 (800-2 1/2)	781 (800-2 3/4)																													

EC-3, 22 FEB 2024 to 21 MAR 2024

EC-3, 22 FEB 2024 to 21 MAR 2024

LOC I-JDU <b>111.15</b>	APP CRS <b>319°</b>	Rwy ldg <b>10000</b> TDZE <b>442</b> Apt Elev <b>459</b>
----------------------------	------------------------	--

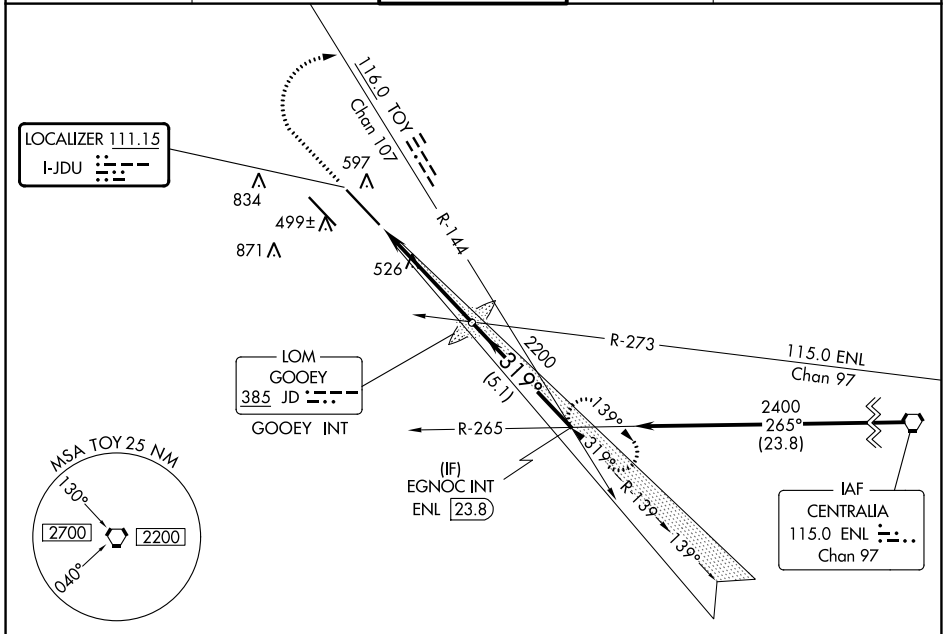
# ILS or LOC RWY 32R

SCOTT AFB/MIDAMERICA ST LOUIS (BLV)

**ASR** For inop ALS, increase S-ILS 32R Cat E visibility to RVR 4000 and increase S-LOC visibility to RVR 5000.  
\* RVR 1800 authorized with use of FD or AP or HUD to DA.

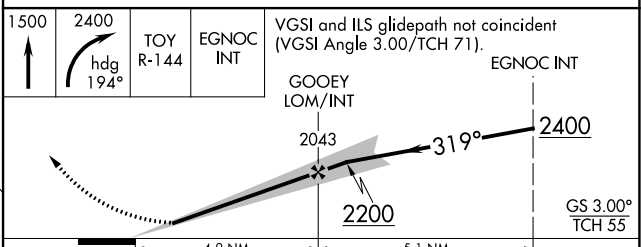
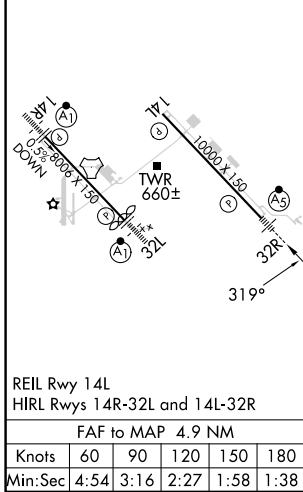
**MALS** MISSED APPROACH: Climb to 1500 then climbing right turn to 2400 on heading 194° and TOY VORTAC R-144 to EGNOC INT and hold.

ATIS ★ <b>128.7 256.7</b>	ST LOUIS APP CON <b>125.2 281.5</b>	SCOTT TOWER <b>128.25 253.5</b>	GND CON <b>119.2 275.8</b>	CLNC DEL <b>119.875 263.025</b>
------------------------------	--	------------------------------------	-------------------------------	------------------------------------



**A 1155** Procedure NA for arrivals on ENL VORTAC airway radials 225 CW 294.

ELEV 459	<b>D</b>	TDZE 442
----------	----------	----------



CATEGORY	A	B	C	D	E
S-ILS 32R *	642/24 200 (200-½)				
S-LOC 32R	780/24	338 (400-½)	780/26	338 (400-½)	
<b>C</b> CIRCLING	1000-1 541 (600-1)	1120-1 661 (700-1)	1240-2¼ 781 (800-2¼)	1240-2½ 781 (800-2½)	1240-2¾ 781 (800-2¾)

EC-3, 22 FEB 2024 to 21 MAR 2024

EC-3, 22 FEB 2024 to 21 MAR 2024

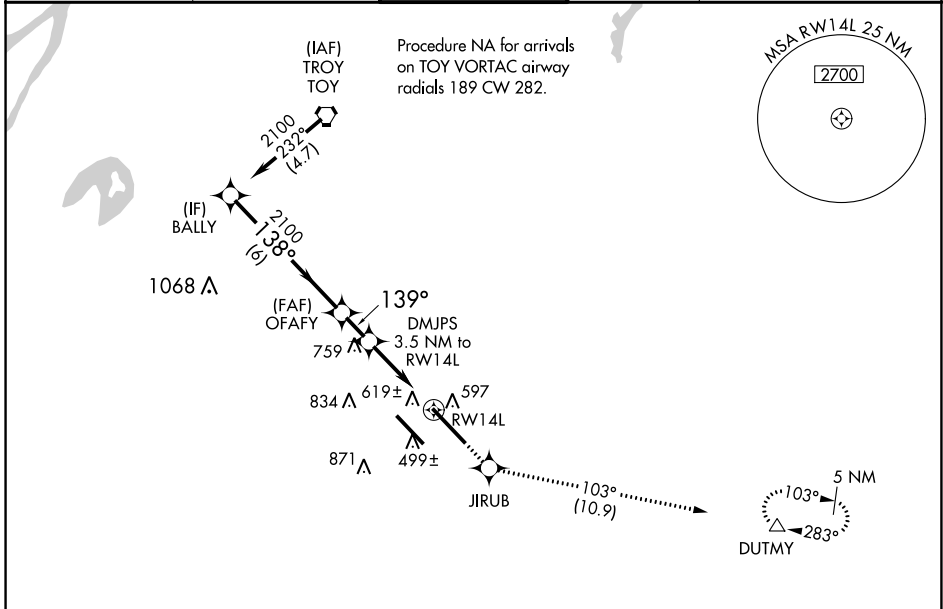
WAAS CH <b>58218</b> <b>W14A</b>	APP CRS <b>139°</b>	Rwy Idg <b>10000</b> TDZE <b>442</b> Apt Elev <b>459</b>
--	------------------------	--

# RNAV (GPS) RWY 14L

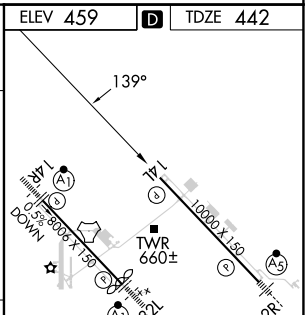
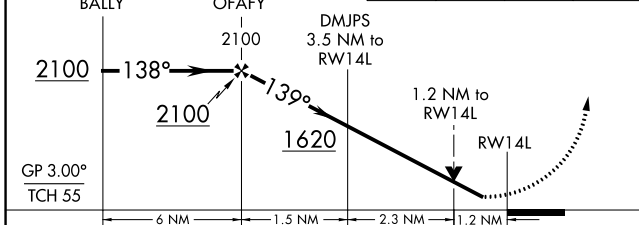
SCOTT AFB/MIDAMERICA ST LOUIS (BLV)

RNAV 1 - GPS.	MISSED APPROACH: Climb to 2300 direct JIRUB and on track 103° to DUTMY and hold.
<p><b>▼</b> Rwy 14L helicopter visibility reduction below RVR 4000 NA.</p> <p><b>▲</b> For uncompensated Baro-VNAV systems, LNAV/VNAV NA below -18°C or above 54°C.</p> <p>ASR</p>	

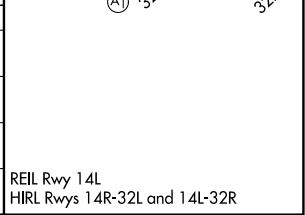
ATIS ★ <b>128.7 256.7</b>	ST LOUIS APP CON <b>125.2 281.5</b>	SCOTT TOWER <b>128.25 253.5</b>	GND CON <b>119.2 275.8</b>	CLNC DEL <b>119.875 263.025</b>
------------------------------	--	------------------------------------	-------------------------------	------------------------------------



VGSI and RNAV glidepath not coincident (VGSI Angle 3.00/TCH 71).	2300	JIRUB	tr 103°	DUTMY	ELEV 459	<b>D</b>	TDZE 442
--	------	-------	---------	-------	----------	----------	----------



CATEGORY	A	B	C	D
LPV DA	694/40 252 (300-¾)			
LNAV/VNAV DA	934-1⅜ 492 (500-1⅝)			
LNAV MDA	900/55	458 (500-1)	900-1⅜ 458 (500-1⅝)	
<b>C</b> CIRCLING	1000-1 541 (600-1)	1120-1 661 (700-1)	1240-2¼ 781 (800-2¼)	1240-2½ 781 (800-2½)



EC-3, 22 FEB 2024 to 21 MAR 2024

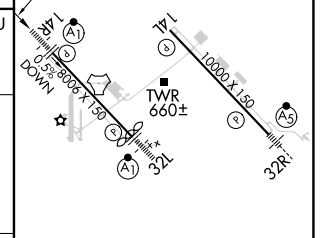
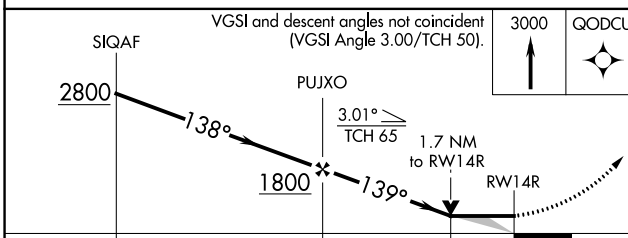
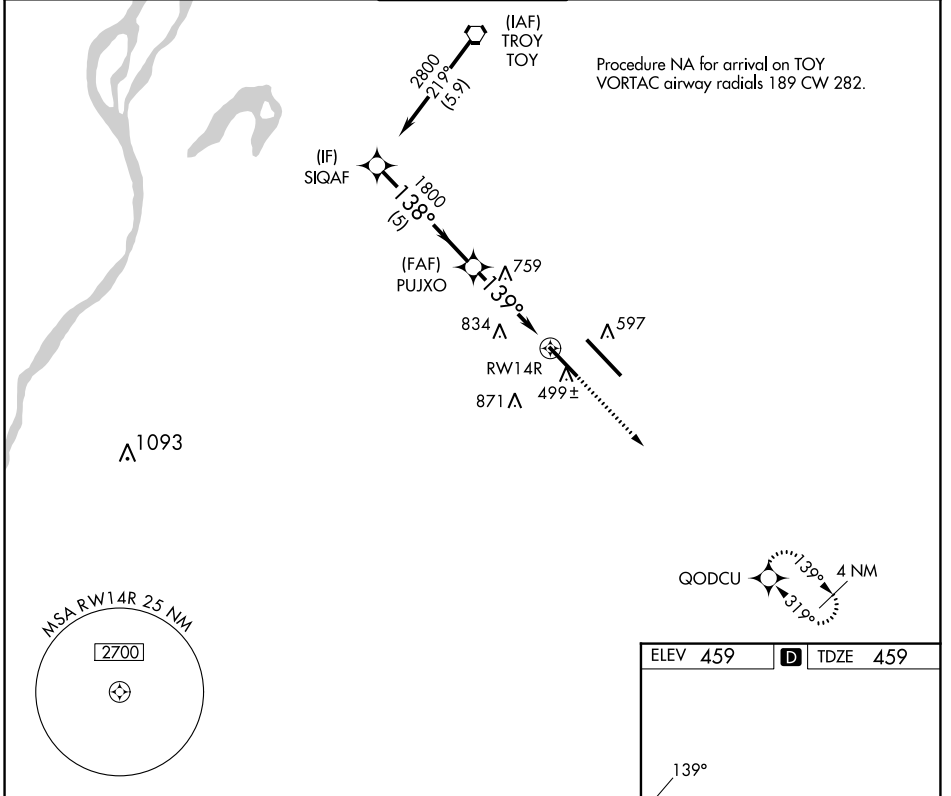
EC-3, 22 FEB 2024 to 21 MAR 2024

APP CRS <b>139°</b>	Rwy Idg TDZE Apt Elev	<b>8006</b> <b>459</b> <b>459</b>
------------------------	-----------------------------	---

# RNAV (GPS) RWY 14R

SCOTT AFB/MIDAMERICA ST LOUIS (BLV)

RNP APCH - GPS.		ALSF-1		MISSED APPROACH: Climb to 3000 direct QODCU and hold.	
ASR		For inop ALS, increase LNAV Cat C/D visibility to 1 3/4 SM.			
ATIS ★ <b>128.7 256.7</b>	ST LOUIS APP CON <b>125.2 281.5</b>	SCOTT TOWER <b>128.25 253.5</b>	GND CON <b>119.2 275.8</b>	CLNC DEL <b>119.875 263.025</b>	



CATEGORY	A	B	C	D
LNAV MDA	1060/24	601 (700-1/2)	1060-1 3/8	601 (700-1 3/8)
CIRCLING	1060-1 601 (700-1)	1120-1 661 (700-1)	1240-2 1/4 781 (800-2 1/4)	1240-2 1/2 781 (800-2 1/2)

REIL Rwy 14L  
HIRL Rwy 14L-32R and 14R-32L

EC-3, 22 FEB 2024 to 21 MAR 2024

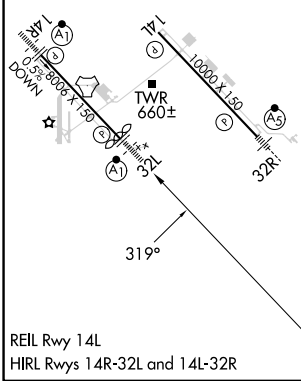
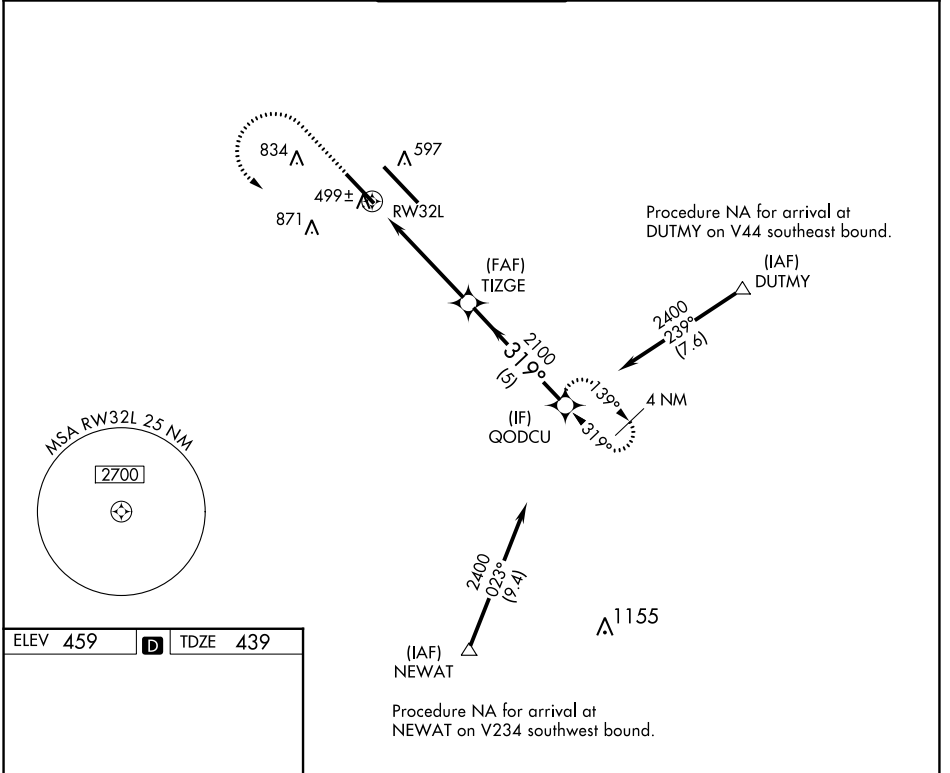
EC-3, 22 FEB 2024 to 21 MAR 2024

APP CRS <b>319°</b>	Rwy Idg <b>7822</b>
	TDZE <b>439</b>
	Apt Elev <b>459</b>

# RNAV (GPS) RWY 32L

SCOTT AFB/MIDAMERICA ST LOUIS (BLV)

RNP APCH-GPS.		ALSF-1	MISSED APPROACH: Climb to 1500 then climbing left turn to 2400 direct QODCU and hold.	
<p>For inop ALS, increase LNAV Cat C/D visibility to 1 1/8 mile.</p>				
ATIS ★ <b>128.7 256.7</b>	ST LOUIS APP CON <b>125.2 281.5</b>	SCOTT TOWER <b>128.25 253.5</b>	GND CON <b>119.2 275.8</b>	CLNC DEL <b>119.875 263.025</b>



ELEV 459	<b>D</b>	TDZE 439		
1500	2400	QODCU	VGSI and descent angles not coincident (VGSI Angle 3.00/TCH 50).	
		QODCU		
		TIZGE	2400	
		2100		
CATEGORY	A	B	C	D
LNAV MDA	920/24	481 (500-1/2)	920/50	481 (500-1)
<b>C</b> CIRCLING	1000-1 541 (600-1)	1120-1 661 (700-1)	1240-2 1/4 781 (800-2 1/4)	1240-2 1/2 781 (800-2 1/2)

EC-3, 22 FEB 2024 to 21 MAR 2024

EC-3, 22 FEB 2024 to 21 MAR 2024

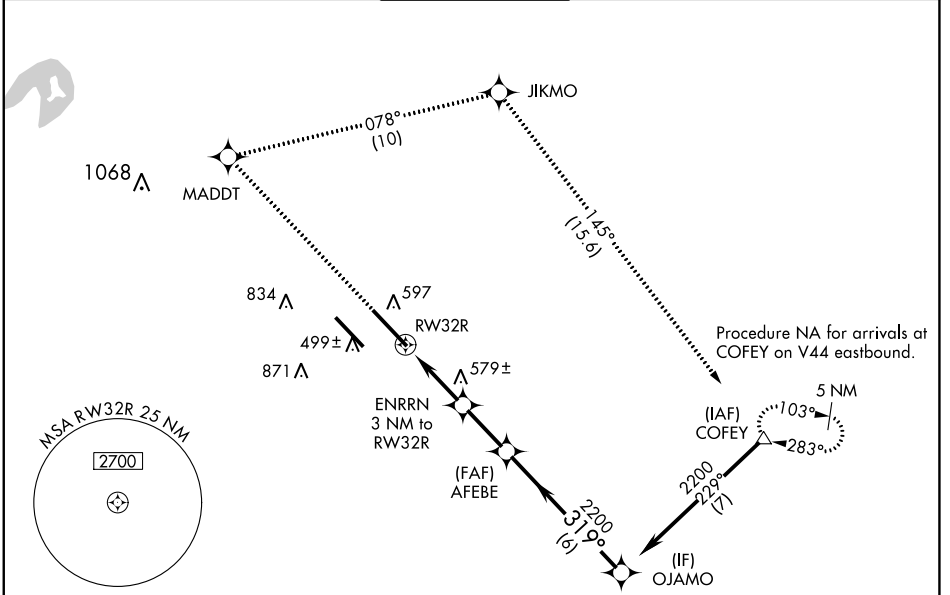
WAAS CH <b>50518</b> <b>W32A</b>	APP CRS <b>319°</b>	Rwy Idg <b>10000</b> TDZE <b>442</b> Apt Elev <b>459</b>
--	------------------------	--




# RNAV (GPS) RWY 32R

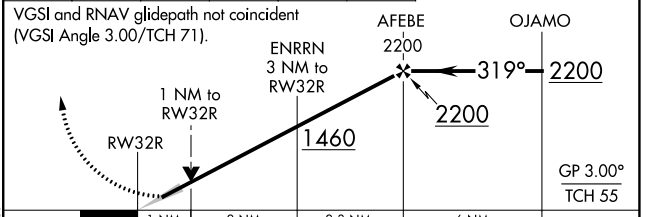
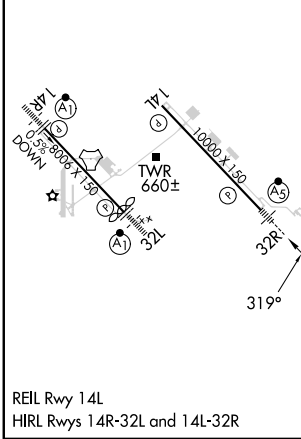
SCOTT AFB/MIDAMERICA ST LOUIS (BLV)

RNP APCH - GPS.		MALSR	MISSED APPROACH: Climb to 2300 direct MADDT and right turn on track 078° to JIKMO and on track 145° to COFEY and hold.
 For uncompensated Baro-VNAV systems, procedure NA below -18°C or above 54°C.  ASR For inop ALS, increase LNAV/VNAV all Cats visibility to RVR 5500.			

ATIS ★ <b>128.7 256.7</b>	ST LOUIS APP CON <b>125.2 281.5</b>	SCOTT TOWER <b>128.25 253.5</b>	GND CON <b>119.2 275.8</b>	CLNC DEL <b>119.875 263.025</b>
------------------------------	--	------------------------------------	-------------------------------	------------------------------------



ELEV 459	<b>D</b> TDZE 442	2300	MADDT	JIKMO	COFEY
		↑		tr 078° 	tr 145° 



VGSI and RNAV glidepath not coincident (VGSI Angle 3.00/TCH 71).	AFEBE 2200				OJAMO
	ENRRN 3 NM to RW32R		319° 2200		2200
	1 NM to RW32R		1460		GP 3.00°
	RW32R				TCH 55
	1 NM		2 NM		2.3 NM
	2 NM		2.3 NM		6 NM
CATEGORY	A	B	C	D	
LPV DA	642/24		200 (200-½)		
LNAV/VNAV DA	804/35		362 (400-⅝)		
LNAV MDA	840/24		840/35		398 (400-⅝)
<b>C</b> CIRCLING	1000-1 541 (600-1)	1120-1 661 (700-1)	1240-2¼ 781 (800-2¼)	1240-2½ 781 (800-2½)	

EC-3, 22 FEB 2024 to 21 MAR 2024

EC-3, 22 FEB 2024 to 21 MAR 2024



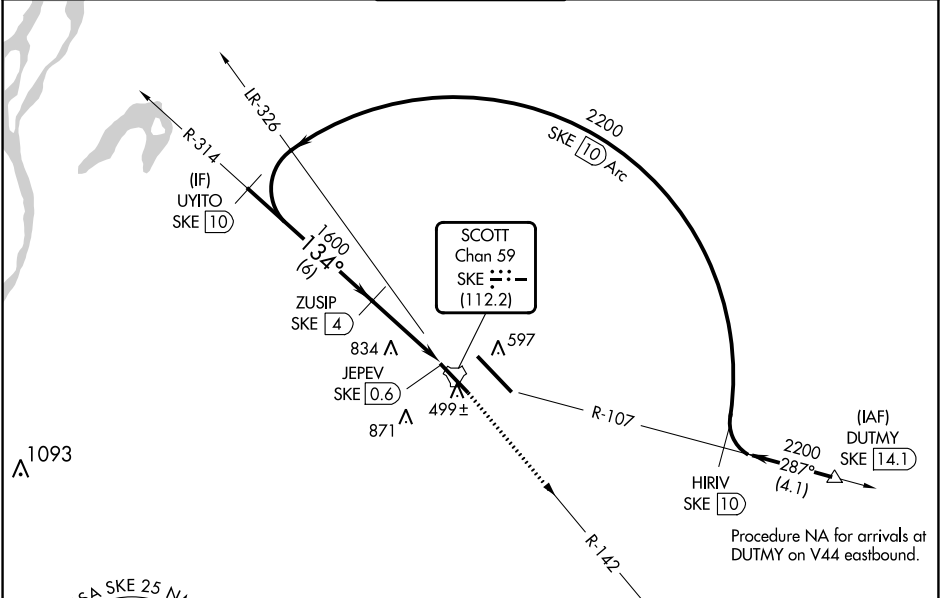
TACAN SKE Chan <b>59</b> (112.2)	APP CRS <b>134°</b>	Rwy ldg TDZE <b>459</b> Apt Elev <b>459</b>	<b>8006</b>
--	------------------------	---	-------------

# TACAN RWY 14R

SCOTT AFB/MIDAMERICA ST LOUIS (BLV)

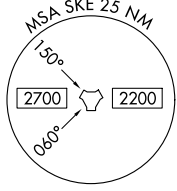
ALSF-1 ASR	For inop ALS, increase S-14R Cat E visibility to 1 1/8 SM.	MISSED APPROACH: Climb to 2400 on SKE R-142 to WOMUG/14.1 DME and hold.
---------------	--	---

ATIS ★ <b>128.7 256.7</b>	ST LOUIS APP CON <b>125.2 281.5</b>	SCOTT TOWER <b>128.25 253.5</b>	GND CON <b>119.2 275.8</b>	CLNC DEL <b>119.875 263.025</b>
------------------------------	--	------------------------------------	-------------------------------	------------------------------------

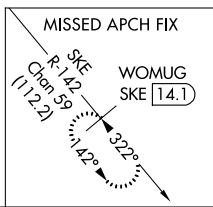


EC-3, 22 FEB 2024 to 21 MAR 2024

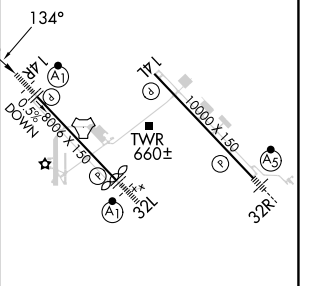
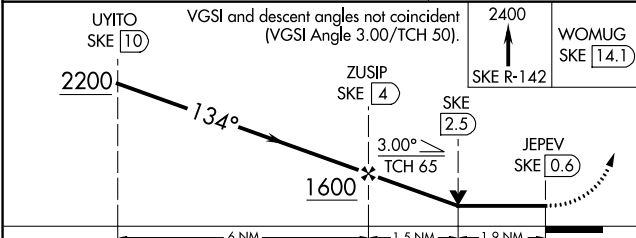
EC-3, 22 FEB 2024 to 21 MAR 2024



ESA W/IN 100 NM 3500



ELEV 459	<b>D</b> TDZE 459
----------	-------------------



CATEGORY	A	B	C	D	E
S-14R	1100/24	641 (700-1/2)	1100-1 3/8	641 (700-1 3/8)	
<b>C</b> CIRCLING	1100-1 641 (700-1)	1120-1 661 (700-1)	1240-2 1/4 781 (800-2 1/4)	1240-2 1/2 781 (800-2 1/2)	1240-2 3/4 781 (800-2 3/4)

REL Rwy 14L  
HIRL Rwy 14L-32R and 14R-32L

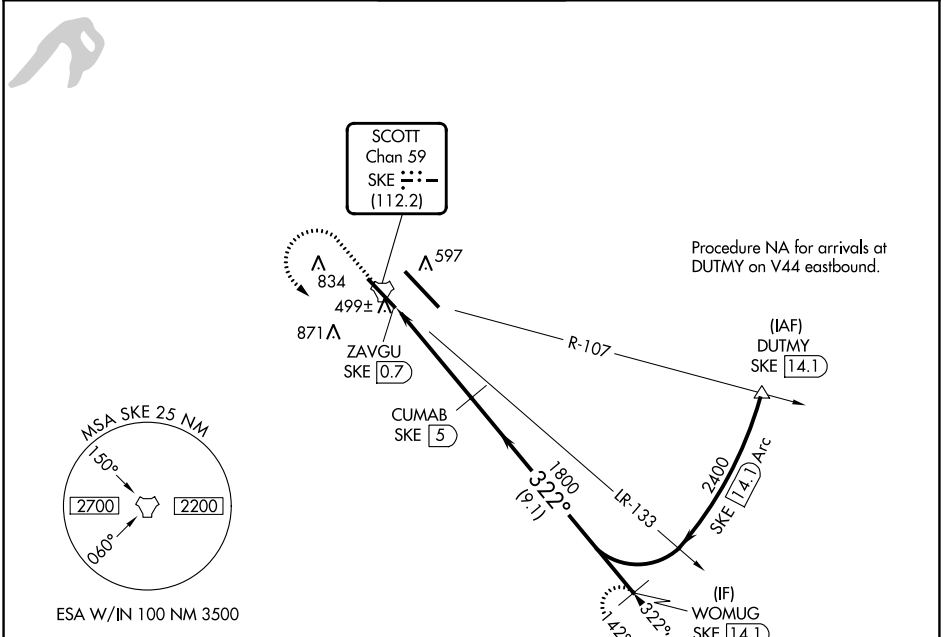
TACAN SKE Chan <b>59</b> (112.2)	APP CRS <b>322°</b>	Rwy ldg TDZE Apt Elev	<b>7822</b> <b>439</b> <b>459</b>
--	------------------------	-----------------------------	---

# TACAN RWY 32L

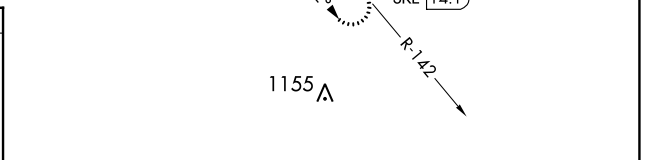
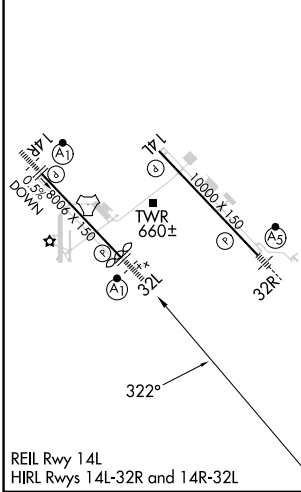
SCOTT AFB/MIDAMERICA ST LOUIS (BLV)

		For inop ALS, increase S-32L Cat C/D/E visibility to 1½ SM.		MISSED APPROACH: Climb to 1500 then climbing left turn to 2400 on SKE R-142 to WOMUG/14.1 DME and hold.

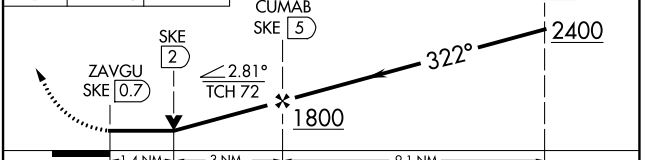
ATIS ★ <b>128.7 256.7</b>	ST LOUIS APP CON <b>125.2 281.5</b>	SCOTT TOWER <b>128.25 253.5</b>	GND CON <b>119.2 275.8</b>	CLNC DEL <b>119.875 263.025</b>
------------------------------	--	------------------------------------	-------------------------------	------------------------------------



ELEV 459	<b>D</b>	TDZE 439
----------	----------	----------



1500	2400	WOMUG SKE [14.1]	VGSI and descent angles not coincident (VGSI Angle 3.00/TCH 50).	WOMUG SKE [14.1]
------	------	------------------	--	------------------



	1.4 NM	3 NM	9.1 NM		
CATEGORY	A	B	C	D	E
S-32L	920/24	481 (500-½)	920/50	481 (500-1)	920/60 481 (500-1½)
<input checked="" type="checkbox"/> CIRCLING	1000-1 541 (600-1)	1120-1 661 (700-1)	1240-2¼ 781 (800-2¼)	1240-2½ 781 (800-2½)	1240-2¾ 781 (800-2¾)

EC-3, 22 FEB 2024 to 21 MAR 2024

EC-3, 22 FEB 2024 to 21 MAR 2024

TACAN SKE Chan <b>59</b> (112.2)	APP CRS <b>230°</b>	Rwy ldg TDZE Apt Elev	<b>N/A</b> <b>N/A</b> <b>459</b>
--	------------------------	-----------------------------	--

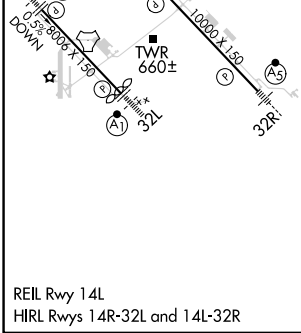
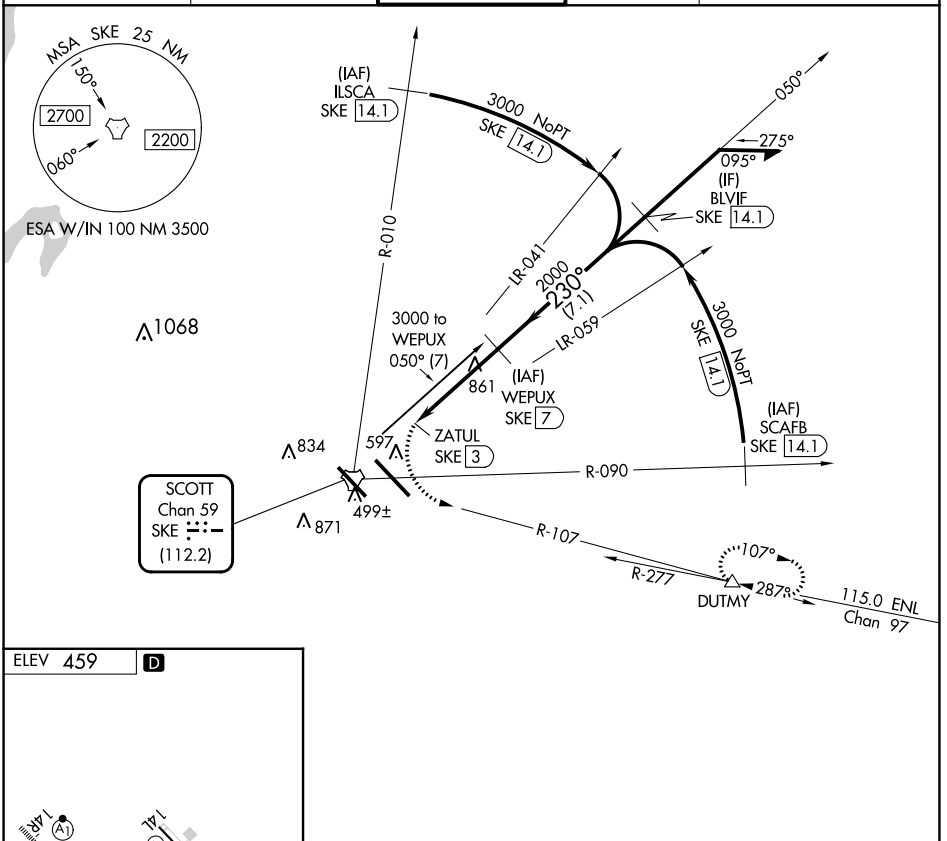
# TACAN-A

SCOTT AFB/MIDAMERICA ST LOUIS (BLV)

**⚠** RADAR required. When local altimeter setting not received, use St Louis Downtown altimeter setting; increase all MDA 60 feet; increase Circling Cat C/D/E visibility ¼ mile.

**⚠** MISSED APPROACH: Climbing left turn to 3000 on heading 130° and SKE TACAN R-107 to DUTMY/SKE 14.1 DME and hold.

ATIS ★ <b>128.7 256.7</b>	ST LOUIS APP CON <b>125.2 281.5</b>	SCOTT TOWER <b>128.25 253.5</b>	GND CON <b>119.2 275.8</b>	CLNC DEL <b>119.875 263.025</b>
------------------------------	--	------------------------------------	-------------------------------	------------------------------------



CATEGORY <b>C</b> CIRCLING	A	B	C	D	E
	1180-2¼	721 (800-2¼)	1240-2¼ 781 (800-2¼)	1240-2½ 781 (800-2½)	1240-2¾ 781 (800-2¾)

# TACAN-A

EC-3, 22 FEB 2024 to 21 MAR 2024

EC-3, 22 FEB 2024 to 21 MAR 2024