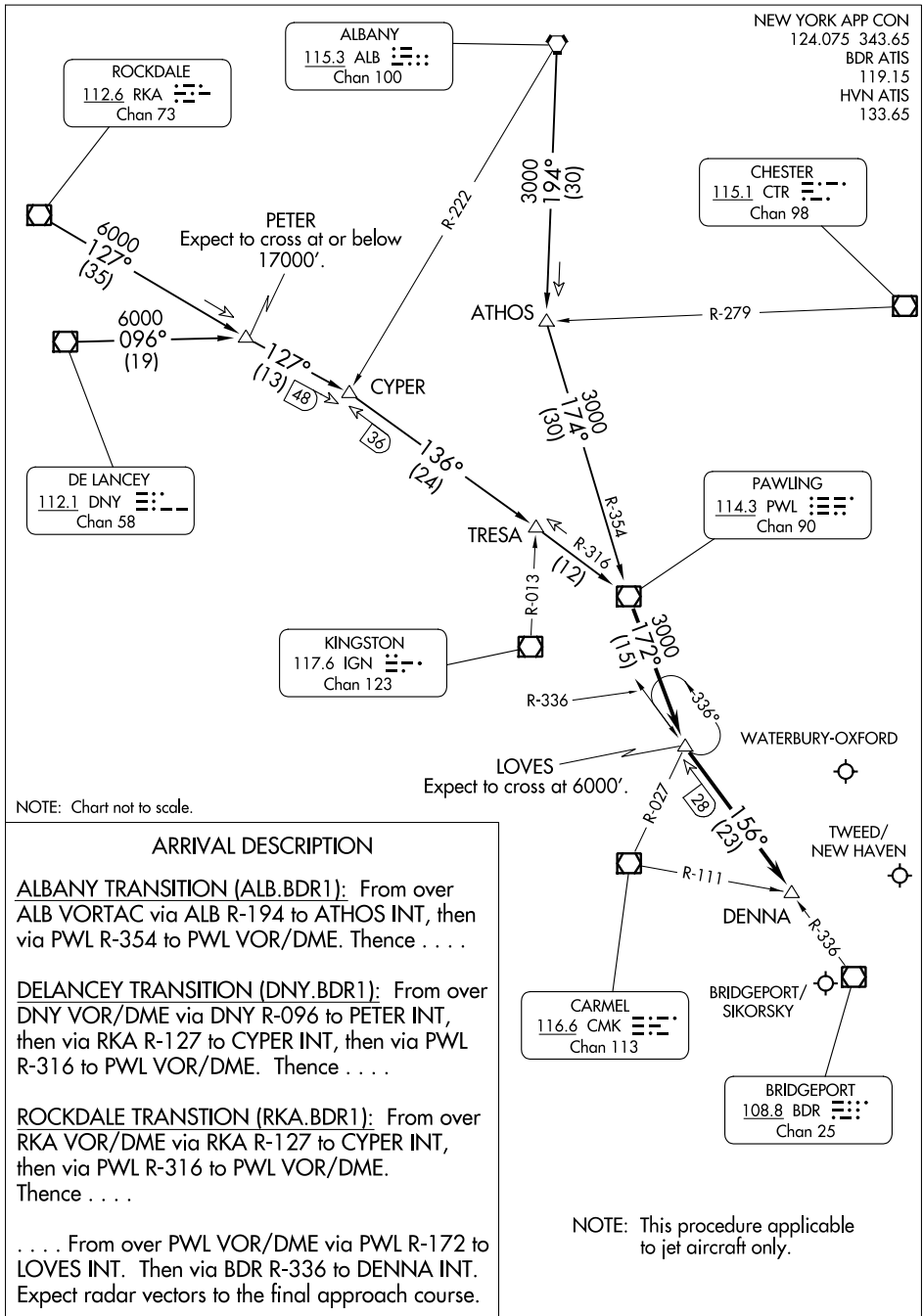


BRIDGEPORT ONE ARRIVAL

AL-621 (FAA)

BRIDGEPORT, CONNECTICUT



NE-1, 22 FEB 2024 to 21 MAR 2024

NE-1, 22 FEB 2024 to 21 MAR 2024

NOTE: Chart not to scale.

ARRIVAL DESCRIPTION

ALBANY TRANSITION (ALB.BDR1): From over ALB VORTAC via ALB R-194 to ATHOS INT, then via PWL R-354 to PWL VOR/DME. Thence

DELANCEY TRANSITION (DNY.BDR1): From over DNY VOR/DME via DNY R-096 to PETER INT, then via RKA R-127 to CYPER INT, then via PWL R-316 to PWL VOR/DME. Thence

ROCKDALE TRANSITION (RKA.BDR1): From over RKA VOR/DME via RKA R-127 to CYPER INT, then via PWL R-316 to PWL VOR/DME. Thence

. . . . From over PWL VOR/DME via PWL R-172 to LOVES INT. Then via BDR R-336 to DENNA INT. Expect radar vectors to the final approach course.

BRIDGEPORT ONE ARRIVAL

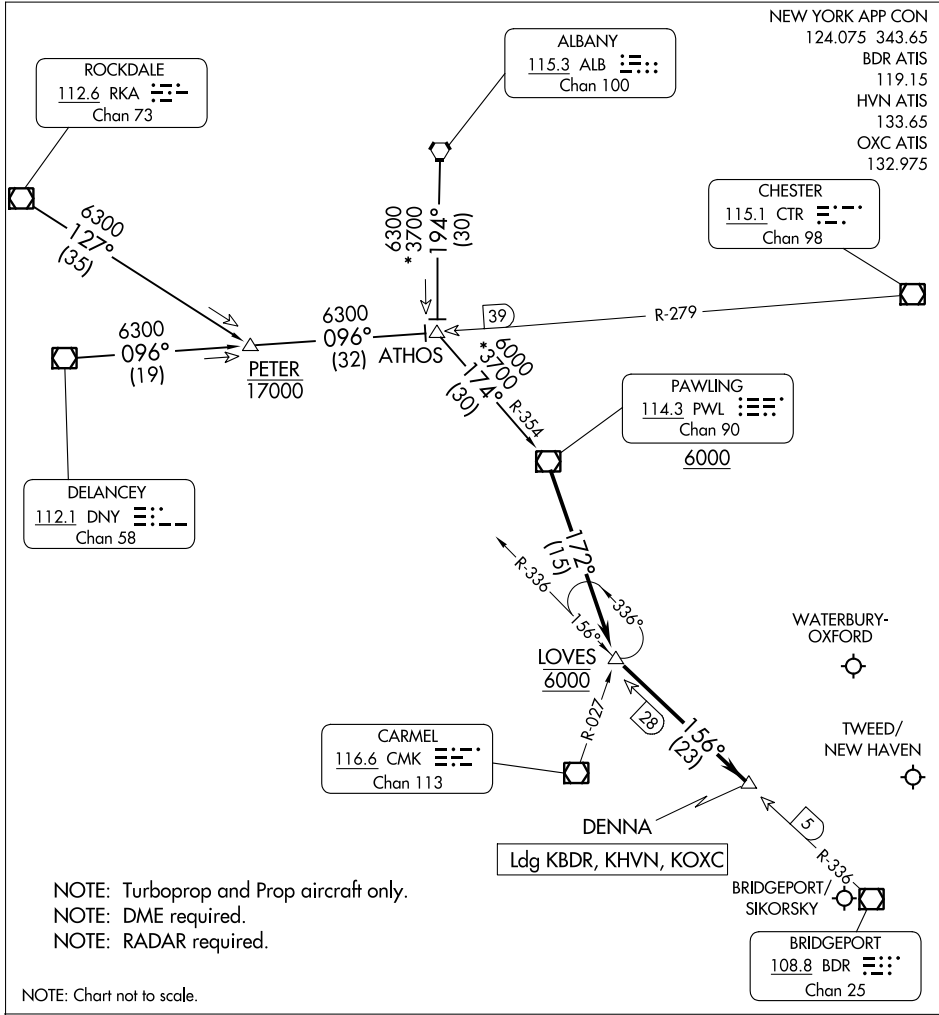
BRIDGEPORT, CONNECTICUT

DENNA THREE ARRIVAL

AL-621 (FAA)

BRIDGEPORT, CONNECTICUT

NEW YORK APP CON
 124.075 343.65
 BDR ATIS
 119.15
 HVN ATIS
 133.65
 OXC ATIS
 132.975



NE-1, 22 FEB 2024 to 21 MAR 2024

NE-1, 22 FEB 2024 to 21 MAR 2024

- NOTE: Turboprop and Prop aircraft only.
- NOTE: DME required.
- NOTE: RADAR required.

NOTE: Chart not to scale.

ARRIVAL ROUTE DESCRIPTION

ALBANY TRANSITION (ALB.DENNA3): From over ALB VORTAC on ALB R-194 to ATHOS, then on PWL R-354 to PWL VOR/DME, thence....

DELANCEY TRANSITION (DNY.DENNA3): From over DNY VOR/DME on DNY R-096 to ATHOS, then on PWL R-354 to PWL VOR/DME, thence....

ROCKDALE TRANSITION (RKA.DENNA3): From over RKA VOR/DME on RKA R-127 to PETER, then on DNY R-096 to ATHOS, then on PWL R-354 to PWL VOR/DME, thence....

....from PWL VOR/DME on PWL R-172 to cross LOVES at 6000, then on BRIDGEPORT (BDR) R-336 to DENNA. Expect RADAR vectors.