

LOC/DME I-BCB 109.1 Chan 28	APP CRS 125°	Rwy Idg TDZE Apt Elev	5501 2119 2120
---	------------------------	-----------------------------	---

LOC RWY 13

VIRGINIA TECH/MONTGOMERY EXEC (CB'B)

ADF and DME required.

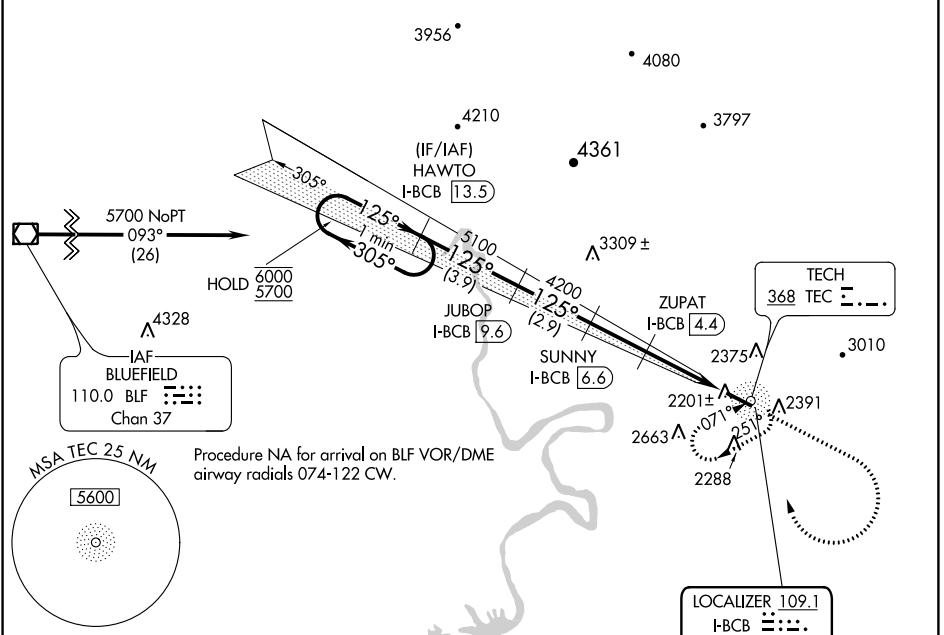
▽ Rwy 13 helicopter visibility reduction below 1 SM NA.
△ NA Inop table does not apply.

ODALS



MISSED APPROACH: Climb to 3600 then climbing right turn to 5700 direct TEC NDB and hold, continue climb-in-hold to 5700.

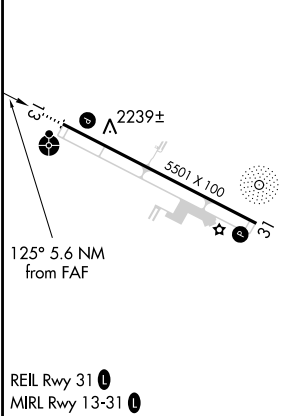
AWOS-3 133.325	ROANOKE APP CON 126.9 339.8	CLNC DEL 124.85	UNICOM 123.05 (CTAF)
--------------------------	---------------------------------------	---------------------------	--------------------------------



NE-3, 27 JAN 2022 to 24 FEB 2022

NE-3, 27 JAN 2022 to 24 FEB 2022

ELEV 2120	TDZE 2119
-----------	-----------



CATEGORY	A	B	C	D
S-13	2480-1	361 (400-1)		NA
C CIRCLING	2760-1 640 (700-1)	2820-1 700 (700-1)	2980-2½ 860 (900-2½)	NA

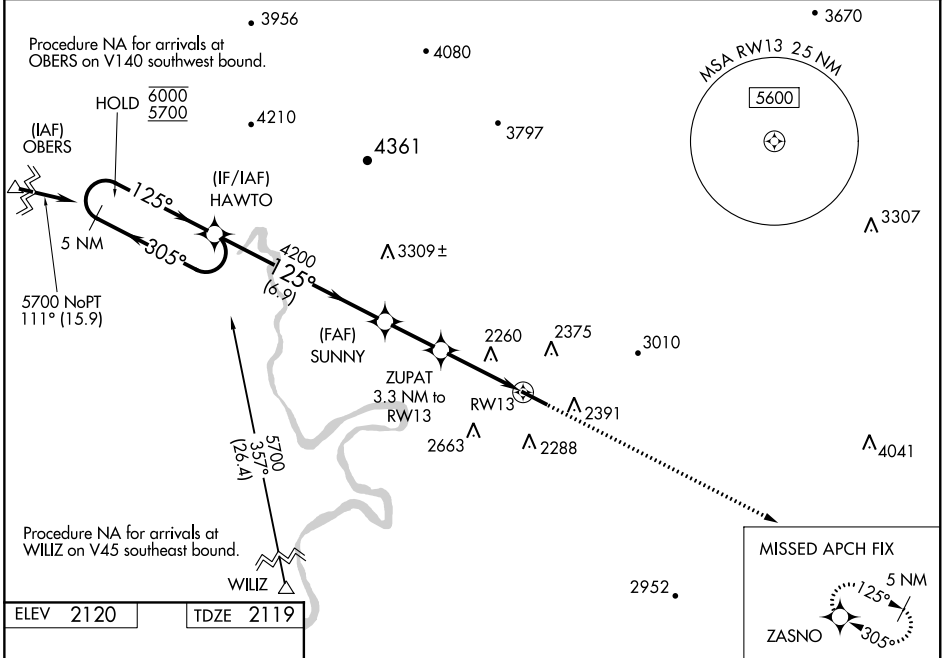
WAAS CH 86712 W13A	APP CRS 125°	Rwy Idg TDZE Apt Elev 5501 2119 2120
--	------------------------	--

RNAV (GPS) RWY 13

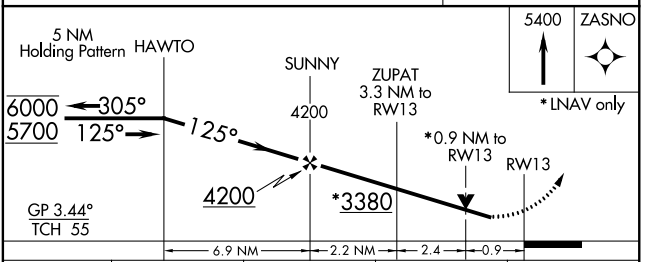
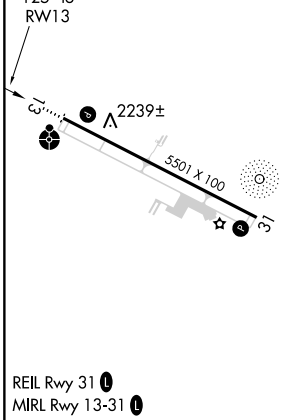
VIRGINIA TECH/MONTGOMERY EXEC (BC'B)

RNP APCH.	ODALS 	MISSED APPROACH: Climb to 5400 direct ZASNO and hold, continue climb-in-hold to 5400.
Rwy 13 helicopter visibility reduction below 1 SM NA. For uncompensated Baro-VNAV systems, LNAV/VNAV NA below -19°C or above 54°C. Inop table does not apply to LPV all Cats, LNAV/VNAV all Cats, and LNAV Cats A and B.		

AWOS-3 133.325	ROANOKE APP CON 126.9 339.8	CLNC DEL 124.85	UNICOM 123.05 (CTAF)
--------------------------	---------------------------------------	---------------------------	--------------------------------



ELEV 2120	TDZE 2119
-----------	-----------



CATEGORY	A	B	C	D
LPV DA		2389-1	270 (300-1)	NA
LNAV/VNAV DA		2419-1	300 (300-1)	NA
LNAV MDA		2520-1	401 (400-1)	NA
CIRCLING	2760-1 640 (700-1)	2820-1 700 (700-1)	2980-2½ 860 (900-2½)	NA

NE-3, 27 JAN 2022 to 24 FEB 2022

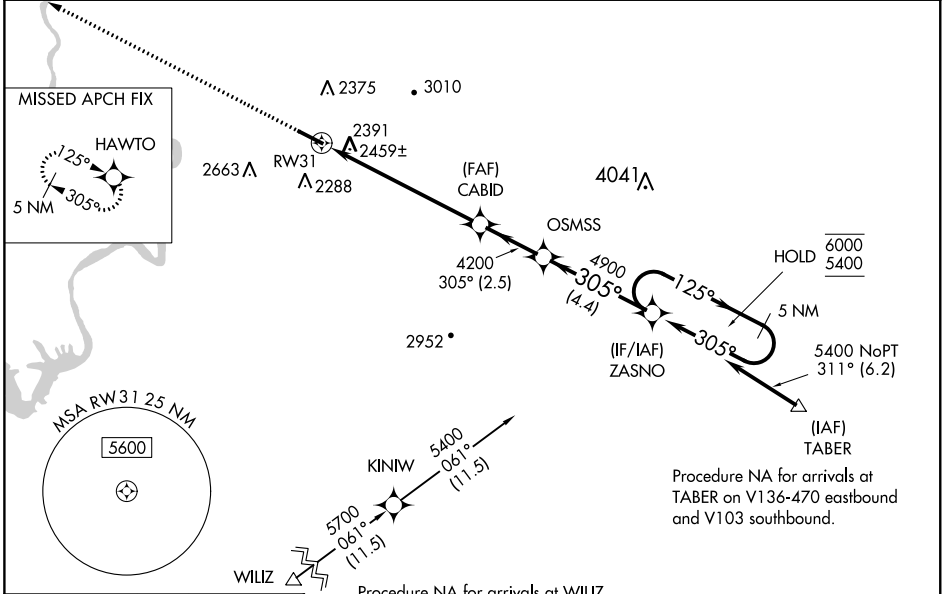
NE-3, 27 JAN 2022 to 24 FEB 2022

WAAS CH 86743 W31A	APP CRS 305°	Rwy Idg TDZE Apt Elev	5501 2120 2120
--	------------------------	-----------------------------	---

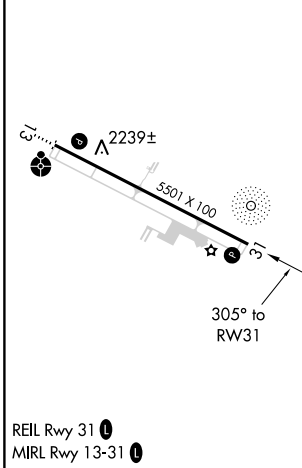
RNAV (GPS) RWY 31

VIRGINIA TECH/MONTGOMERY EXEC (BCB)

RNP APCH.		MISSED APPROACH: Climb to 5900 direct HAWTO and hold, continue climb-in-hold to 5900.	
AWOS-3 133.325	ROANOKE APP CON 126.9 339.8	CINC DEL 124.85	UNICOM 123.05 (CTAF) 0



ELEV 2120	TDZE 2120
-----------	-----------



CATEGORY	A	B	C	D
LPV DA	2412-7/8		292 (300-7/8)	NA
LNAV/VNAV DA	2740-1 3/4		620 (700-1 3/4)	NA
LNAV MDA	2740-1	620 (700-1)	2740-1 3/4 620 (700-1 3/4)	NA
CIRCLING	2760-1 640 (700-1)	2820-1 700 (700-1)	2980-2 1/2 860 (900-2 1/2)	NA

NE-3, 27 JAN 2022 to 24 FEB 2022

NE-3, 27 JAN 2022 to 24 FEB 2022