


LOC/DME I-ACT 109.7 Chan 34	APP CRS 187°	Rwy Idg TDZE Apt Elev	6605 505 516
---	------------------------	-----------------------------	---


ILS or LOC RWY 19

WACO RGNL (ACT)

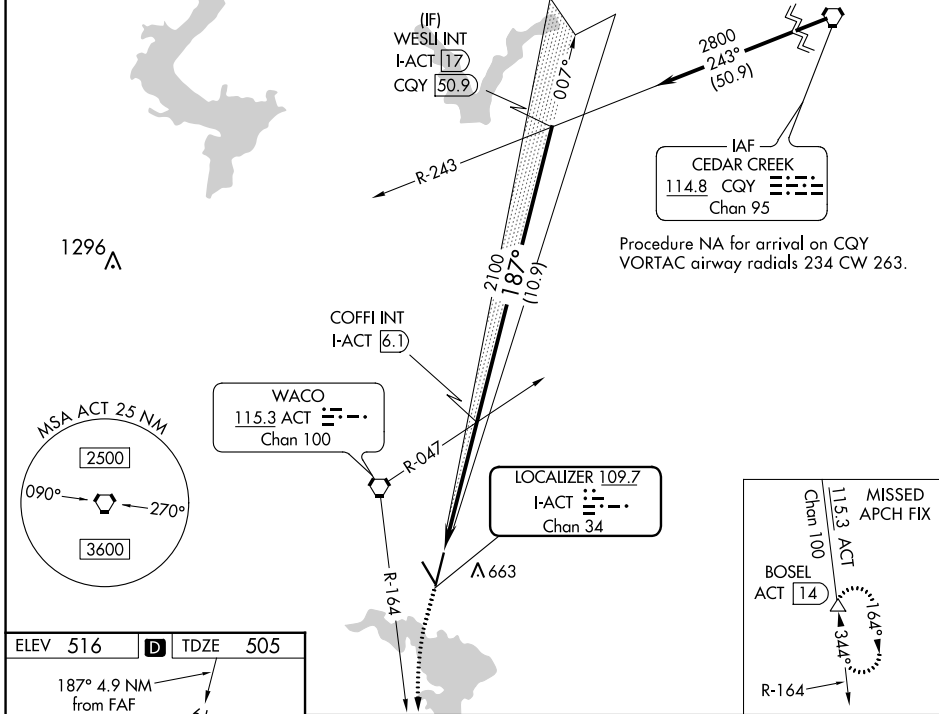
DME required.

MALS 

MISSED APPROACH: Climb to 1500 then climbing left turn to 4000 on ACT VORTAC R-164 to BOSEL 14 DME and hold, continue climb-in-hold to 4000.

ASR  ** RVR 1800 authorized with use of FD or AP or HUD to DA.

ATIS 123.85	WACO APP CON ★ 127.65 227.125	WACO TOWER ★ 119.3 (CTAF) 0 257.8	GND CON 121.9	UNICOM 122.95
-----------------------	---	---	-------------------------	-------------------------



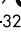
ELEV 516 **D** TDZE 505

187° 4.9 NM from FAF

7107 X 150

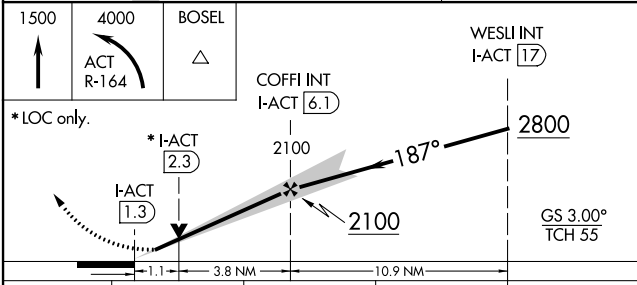
5103 X 130

TWR 589 ☆ 556

REIL Rwy 14
HIRL Rwy 1-19 
MIRL Rwy 14-32

FAF to MAP 4.9 NM

Knots	60	90	120	150	180
Min:Sec	4:54	3:16	2:27	1:58	1:38



CATEGORY	A	B	C	D
S-ILS 19**	705/24 200 (200-½)			
S-LOC 19	900/24	395 (400-½)	900/35	395 (400-¾)
C CIRCLING	940-1 424 (500-1)	980-1 464 (500-1)	1020-1½ 504 (600-1½)	1160-2 644 (700-2)

SC-3, 22 FEB 2024 to 21 MAR 2024

SC-3, 22 FEB 2024 to 21 MAR 2024

WAAS CH 65919 W01A	APP CRS 007°	Rwy Idg TDZE 511 Apt Elev 516
--	------------------------	---

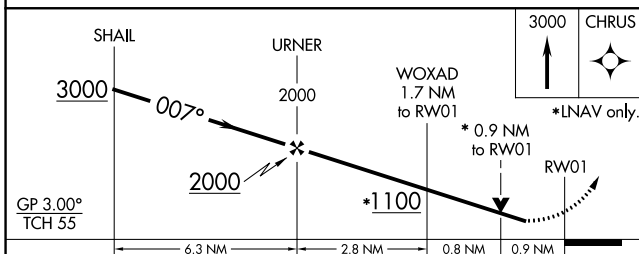
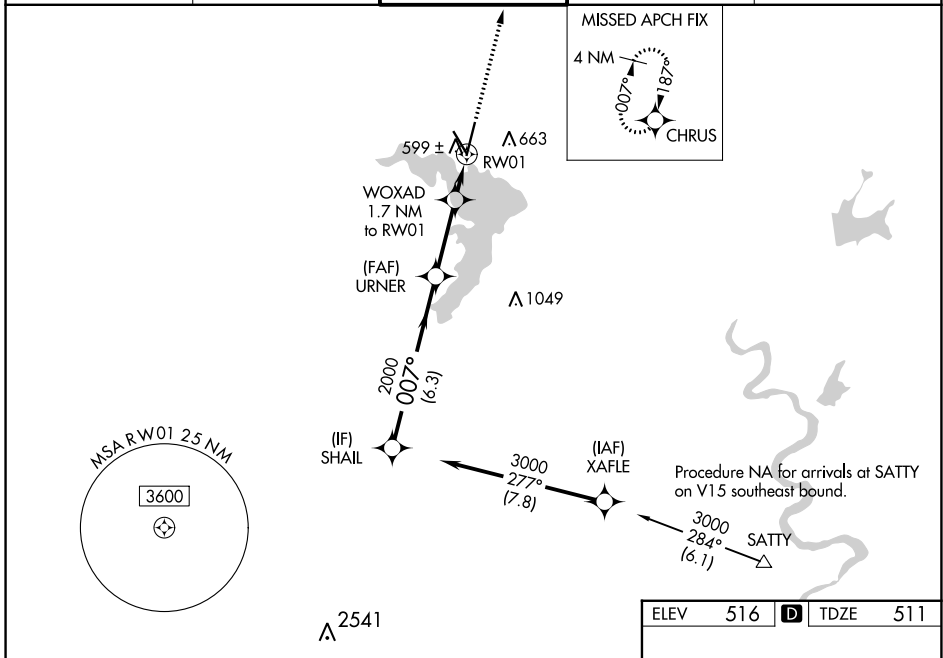
RNAV (GPS) RWY 1

WACO RGNL (ACT)

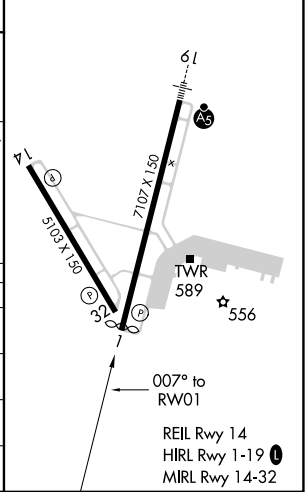
⚠ For uncompensated Baro-VNAV systems, LNAV/VNAV NA below -7°C (19°F) or above 54°C (130°F).
⚠ DME/DME RNP-0.3 NA. When local altimeter setting not received, use Mc Gregor Exec altimeter setting and increase all DA 31 feet and all MDA 40 feet; increase LPV all Cats and LNAV/VNAV all Cats visibility 1/8 mile and Circling Cat D 1/4 mile. Baro-VNAV and VDP NA with Mc Gregor Exec altimeter setting. Helicopter visibility reduction below 3/4 SM NA.

MISSED APPROACH:
Climb to 3000 direct CHRUS and hold.

ATIS 123.85	WACO APP CON ★ 127.65 227.125	WACO TOWER ★ 119.3 (CTAF) 0 257.8	GND CON 121.9	UNICOM 122.95
-----------------------	---	---	-------------------------	-------------------------



ELEV	516	D	TDZE	511
------	-----	---	------	-----



CATEGORY	A	B	C	D
LPV DA		761-3/4	250 (300-3/4)	
LNAV/VNAV DA		782-7/8	271 (300-7/8)	
LNAV MDA		860-1	349 (400-1)	
CIRCLING	940-1	980-1	1020-1 1/2	1160-2
	424 (500-1)	464 (500-1)	504 (600-1 1/2)	644 (700-2)

SC-3, 22 FEB 2024 to 21 MAR 2024

SC-3, 22 FEB 2024 to 21 MAR 2024

WAAS CH 56520 W14A	APP CRS 142°	Rwy Idg TDZE Apt Elev	5103 513 516
--	------------------------	-----------------------------	---

RNAV (GPS) RWY 14

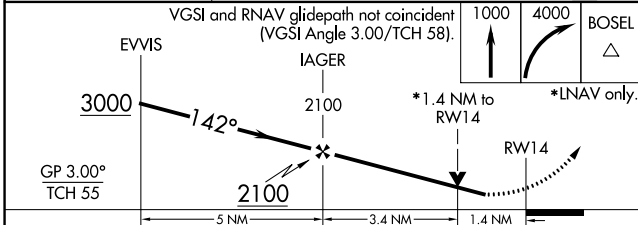
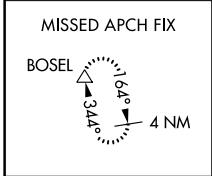
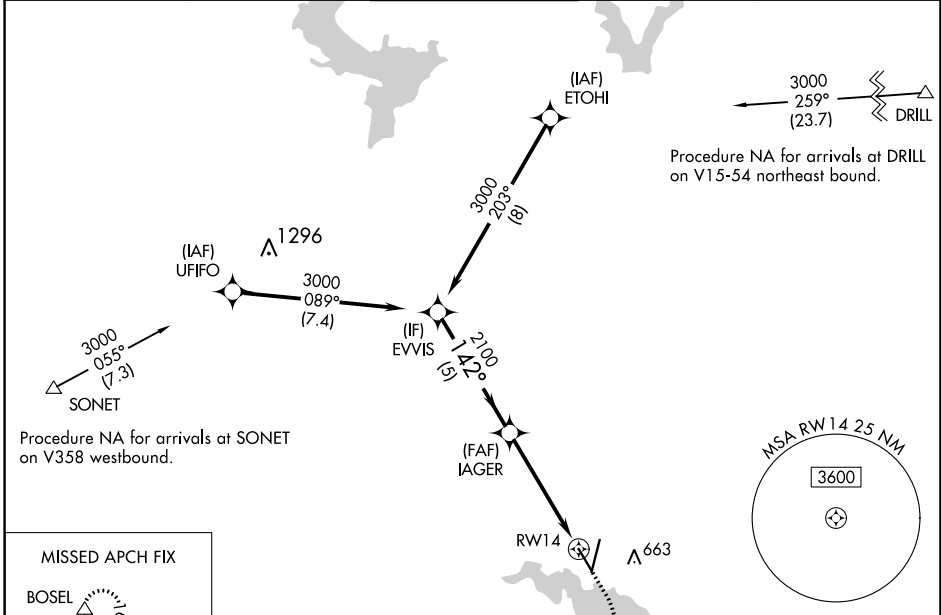
WACO RGNL (ACT)

RNP APCH.

ASR Rwy 14 helicopter visibility reduction below $\frac{3}{4}$ SM NA. For uncompensated Baro-VNAV systems, procedure NA below -8°C or above 54°C.

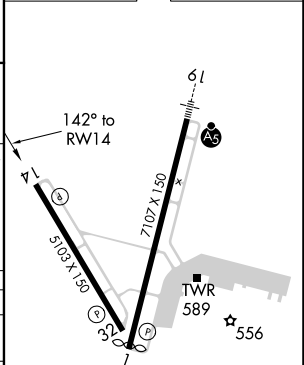
MISSED APPROACH: Climb to 1000 then climbing right turn to 4000 direct BOSEL and hold, continue climb-in-hold to 4000.

ATIS 123.85	WACO APP CON * 127.65 227.125	WACO TOWER * 119.3 (CTAF) 0 257.8	GND CON 121.9	UNICOM 122.95
-----------------------	---	---	-------------------------	-------------------------



CATEGORY	A	B	C	D
LPV DA		763- $\frac{3}{4}$	250 (300- $\frac{3}{4}$)	
LNAV/VNAV DA		763- $\frac{3}{4}$	250 (300- $\frac{3}{4}$)	
LNAV MDA	1020-1	507 (600-1)	1020-1 $\frac{3}{8}$	507 (600-1 $\frac{3}{8}$)
C CIRCLING	1020-1	504 (600-1)	1020-1 $\frac{1}{2}$ 504 (600-1 $\frac{1}{2}$)	1160-2 644 (700-2)

ELEV 516	D TDZE 513
----------	-------------------



REIL Rwy 14
HIRL Rwy 1-19
MIRL Rwy 14-32

SC-3, 22 FEB 2024 to 21 MAR 2024

SC-3, 22 FEB 2024 to 21 MAR 2024

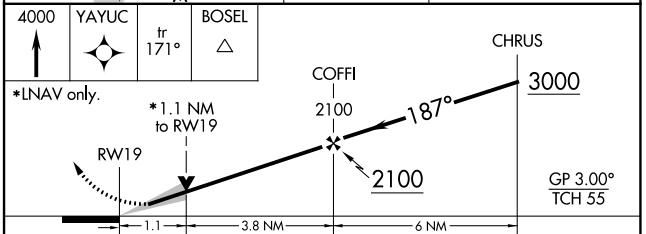
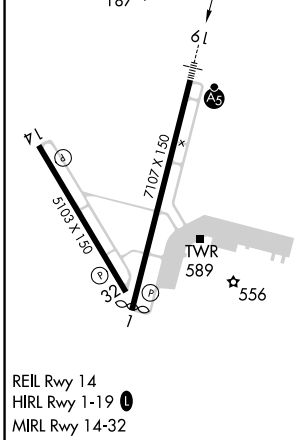
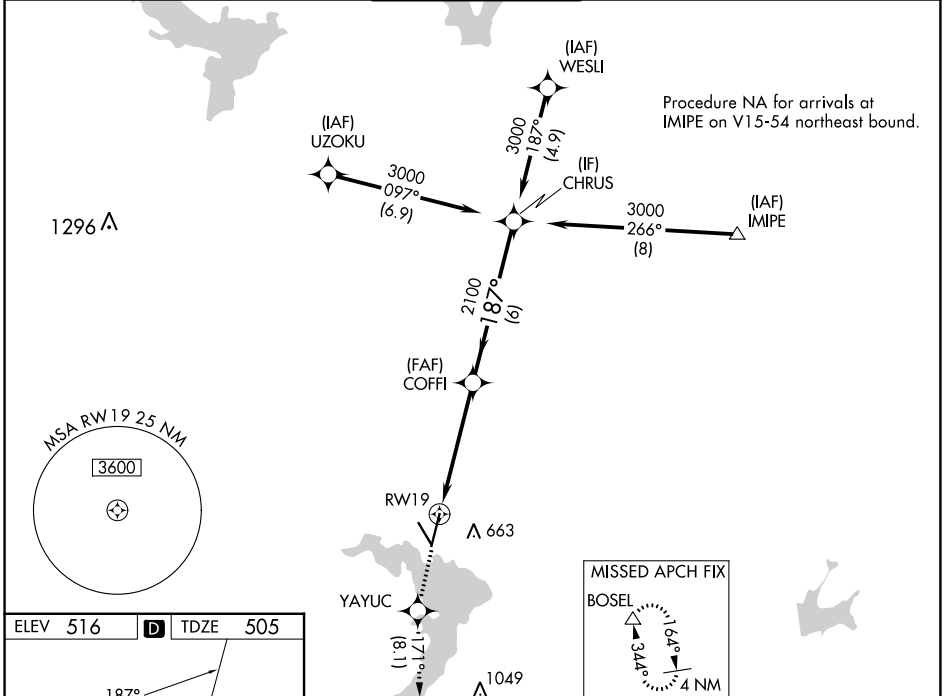
WAAS CH 82119 W19A	APP CRS 187°	Rwy Idg 6605 TDZE 505 Apt Elev 516
--	------------------------	---

RNAV (GPS) RWY 19

WACO RGNL (ACT)

RNP APCH - GPS.	MALSR	MISSED APPROACH: Climb to 4000 direct YAYUC and on track 171° to BOSEL and hold, continue climb-in-hold to 4000.
<p>▼ For uncompensated Baro-VNAV systems, LNAV/VNAV NA below -8°C or above 54°C. For inop ALS, increase LNAV/VNAV visibility all Cats to RVR 4000.</p> <p>▲ ASR **RVR 1800 authorized with use of FD or AP or HUD to DA.</p>		

ATIS 123.85	WACO APP CON * 127.65 227.125	WACO TOWER * 119.3 (CTAF) 0 257.8	GND CON 121.9	UNICOM 122.95
-----------------------	---	---	-------------------------	-------------------------



CATEGORY	A	B	C	D
LPV DA **	705/24 200 (200-½)			
LNAV/VNAV DA	755/24 250 (300-½)			
LNAV MDA	900/24	395 (400-½)	900/35	395 (400-¾)
<input checked="" type="checkbox"/> CIRCLING	940-1 424 (500-1)	980-1 464 (500-1)	1020-1½ 504 (600-1½)	1160-2 644 (700-2)

WAAS CH 69420 W32A	APP CRS 322°	Rwy Idg TDZE Apt Elev	5103 516 516
--	------------------------	-----------------------------	---

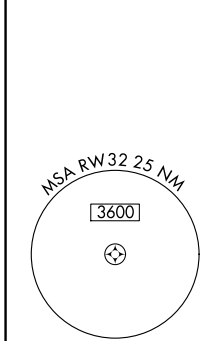
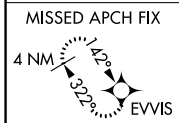
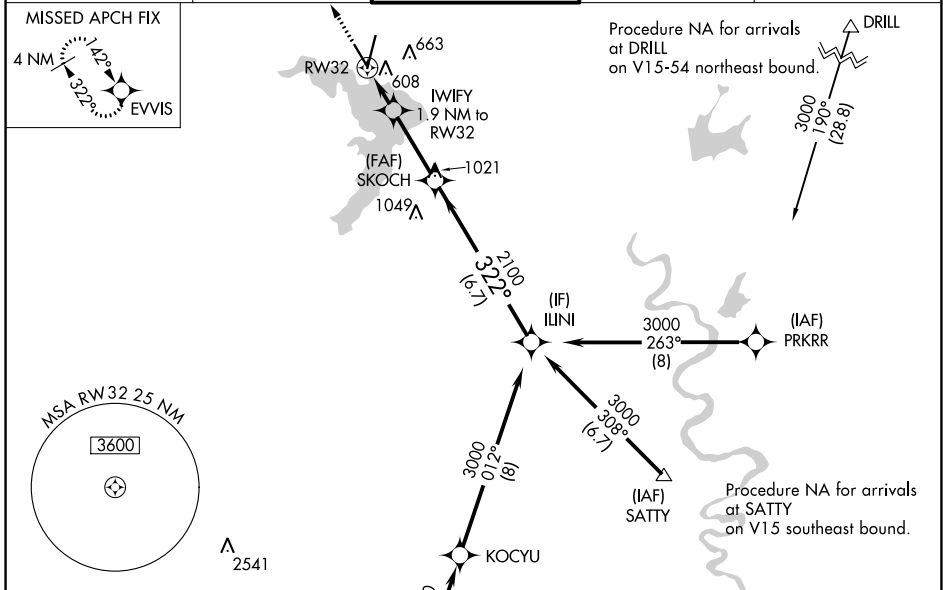
RNAV (GPS) RWY 32

WACO RGNL (ACT)

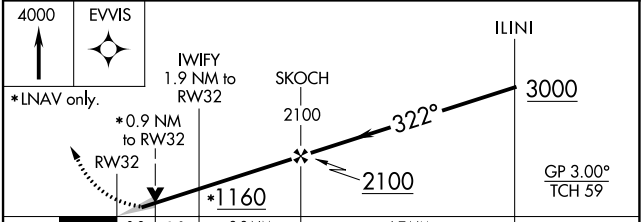
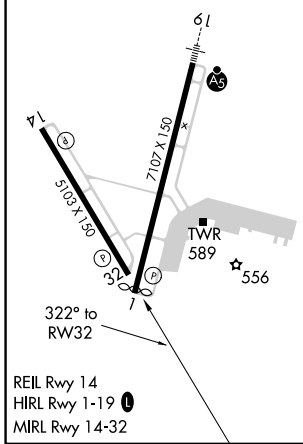
⚠ DME/DME RNP-0.3 NA. When local altimeter setting not received use Mc Gregor Exec altimeter setting and increase all DA 31 feet and all MDA 40 feet; increase LPV and LNAV/VNAV all Cats and LNAV Cats C/D visibility 1/8 mile and Circling Cat D visibility 1/4 mile. For uncompensated Baro-VNAV systems, LNAV/VNAV NA below -13°C (9°F) or above 54°C (130°F). Baro-VNAV NA when using Mc Gregor Exec altimeter setting. VDP NA with Mc Gregor Exec altimeter setting.

MISSED APPROACH: Climb to 4000 direct EVVIS and hold, continue climb-in-hold to 4000.

ATIS 123.85	WACO APP CON * 127.65 227.125	WACO TOWER * 119.3(CTAF) 257.8	GND CON 121.9	UNICOM 122.95
-----------------------	---	--	-------------------------	-------------------------



ELEV 516	D	TDZE 516
----------	----------	----------



CATEGORY	A	B	C	D
LPV DA		766-3/4	250 (300-3/4)	
LNAV/VNAV DA		773-3/4	257 (300-3/4)	
LNAV MDA		860-1	344 (400-1)	
C CIRCLING	940-1 424 (500-1)	980-1 464 (500-1)	1020-1 1/2 504 (600-1 1/2)	1160-2 644 (700-2)

SC-3, 22 FEB 2024 to 21 MAR 2024

SC-3, 22 FEB 2024 to 21 MAR 2024

VORTAC ACT 115.3 Chan 100	APP CRS 141°	Rwy Idg 5103 TDZE 513 Apt Elev 516
---	------------------------	---

VOR RWY 14

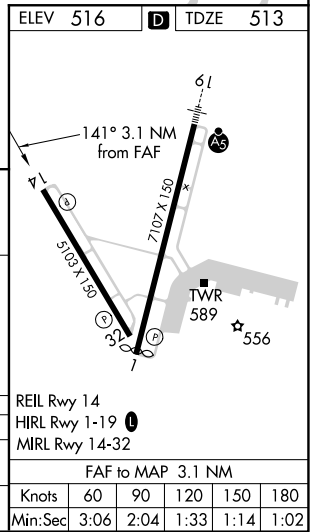
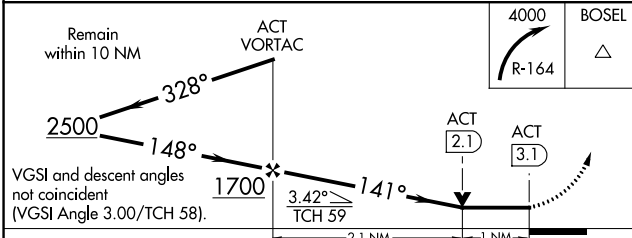
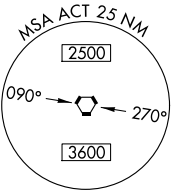
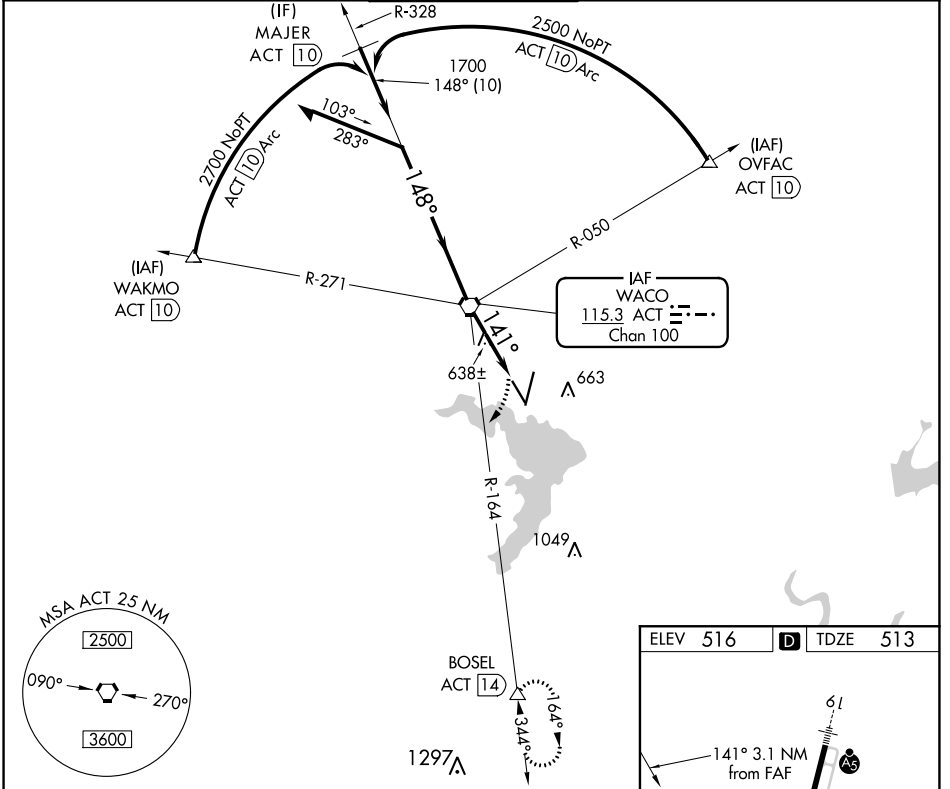
WACO RGNL (ACT)

DME required.

ASR Rwy 14 helicopter visibility reduction below 3/4 SM NA. VDP NA with Mc Gregor Exec altimeter setting. When local altimeter setting not received, use Mc Gregor Exec altimeter setting and increase all MDAs 40 feet; and increase S-14 Cat C/D visibility 1/2 SM and Circling Cat D visibility 1/4 SM.

MISSED APPROACH: Climbing right turn to 4000 on ACT VORTAC R-164 to BOSEL/ACT 14.00 DME and hold, Continue climb-in-hold to 4000.

ATIS 123.85	WACO APP CON * 127.65 227.125	WACO TOWER * 119.3(CTAF) 257.8	GND CON 121.9	UNICOM 122.95
-----------------------	---	--	-------------------------	-------------------------



SC-3, 22 FEB 2024 to 21 MAR 2024

SC-3, 22 FEB 2024 to 21 MAR 2024

VORTAC ACT 115.3 Chan 100	APP CRS 321°	Rwy Idg TDZE Apt Elev	5103 516 516
--	------------------------	-----------------------------	---

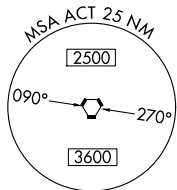
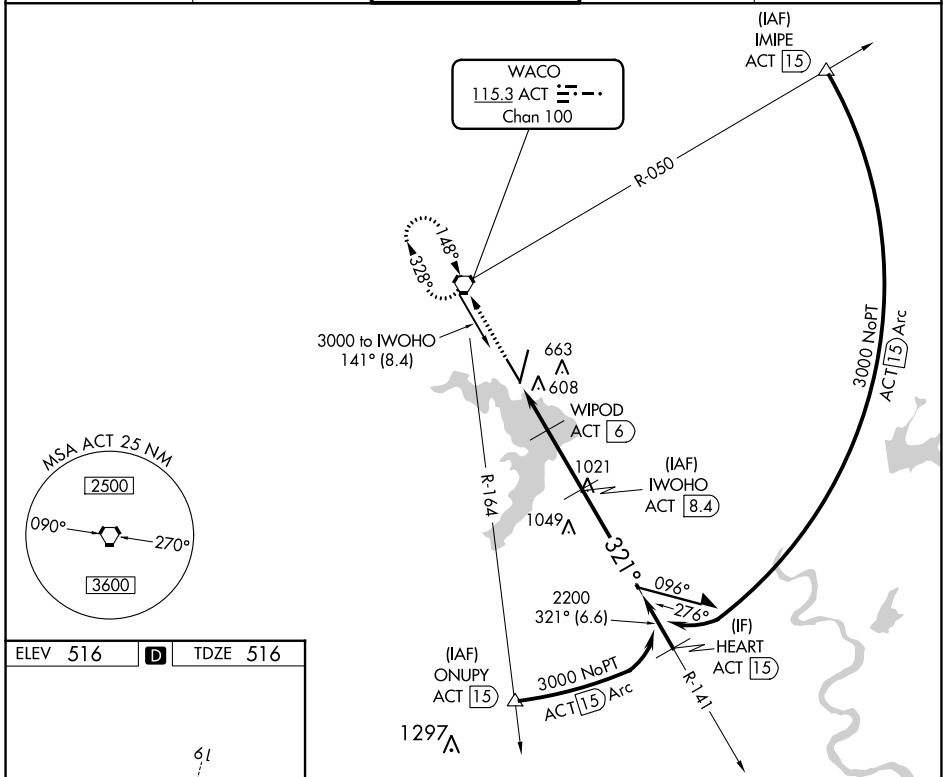
VOR/DME RWY 32

WACO RGNL (ACT)

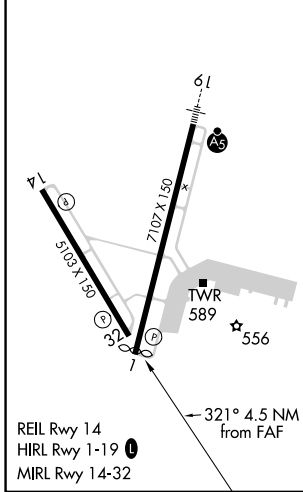
ASR VDP NA with Mc Gregor Exec altimeter setting. When local altimeter setting not received use Mc Gregor Exec altimeter setting and increase all MDA 40 feet; increase S-32 Cats C/D visibility 1/8 mile and Circling Cat D visibility 1/4 mile.

MISSED APPROACH: Climb to 3000 direct ACT VORTAC and hold, continue climb-in-hold to 3000.

ATIS 123.85	WACO APP CON * 127.65 227.125	WACO TOWER * 119.3 (CTAF) 0 257.8	GND CON 121.9	UNICOM 122.95
-----------------------	---	---	-------------------------	-------------------------



ELEV 516	D	TDZE 516
----------	----------	----------



3000 ACT	WIPOD ACT [6]	IWOHO ACT [8.4]	Remain within 10 NM	
ACT [4]	ACT [4.9]	3000	321°	
1300	2200	141°	3.42° TCH 61	
0.9	1.1	2.4	VGSI and descent angles not coincident (VGSI Angle 3.00/TCH 58).	
CATEGORY	A	B	C	D
S-32	860-1 344 (400-1)			
C CIRCLING	940-1 424 (500-1)	980-1 464 (500-1)	1020-1½ 504 (600-1½)	1160-2 644 (700-2)

SC-3, 22 FEB 2024 to 21 MAR 2024

SC-3, 22 FEB 2024 to 21 MAR 2024