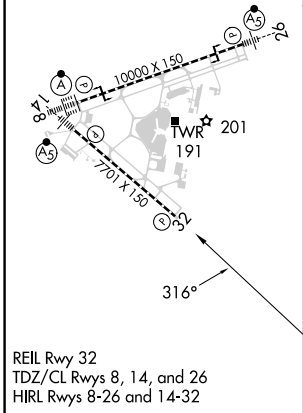
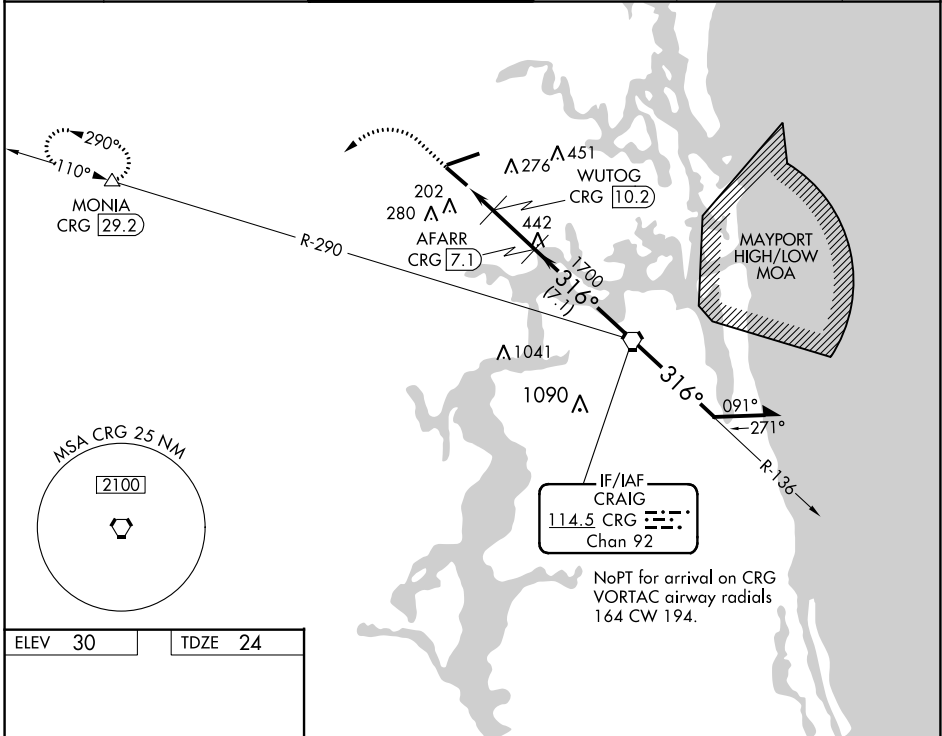


VORTAC CRG <b>114.5</b> Chan <b>92</b>	APP CRS <b>316°</b>	Rwy ldg TDZE <b>24</b> Apt Elev <b>30</b>	<b>7701</b>
--	------------------------	---	-------------

# VOR/DME RWY 32

JACKSONVILLE INTL (JAX)

<p><b>▼</b> Helicopter visibility reduction by below ¾ mile NA. <b>▲</b> Cat E procedure turn NA.</p>		<p>MISSED APPROACH: Climb to 1000 then climbing left turn to 3000 on heading 250° and on CRG VORTAC R-290 to MONIA/CRG 29.2 DME and hold.</p>			
D-ATIS <b>125.85</b>	JACKSONVILLE APP CON <b>119.0 269.9</b>	JACKSONVILLE TOWER <b>118.3 317.7</b>	GND CON <b>121.9 348.6</b>	CLNC DEL <b>119.5 290.275</b>	CPDLC



1000	3000	CRG R-290	MONIA	VGSI and ILS glidepath not coincident (VGSI Angle 3.05/TCH 68).	
↑	hdg 250°		△		
<p>CRG 12.2</p> <p>CRG 11.1</p> <p>CRG 10.2</p> <p>AFARR CRG 7.1</p> <p>WUTOG CRG 10.2</p> <p>3.00° TCH 50</p> <p>720</p> <p>1700</p>		<p>CRG VORTAC</p> <p>6000</p> <p>136°</p> <p>2100</p> <p>316°</p> <p>Remain within 10 NM</p>			
<p>1.1 0.9 → 3.1 NM → 7.1 NM →</p>					
CATEGORY	A	B	C	D	E
S-32	460-1	436 (500-1)	460-1¼	436 (500-1¼)	
CIRCLING	520-1	490 (500-1)	580-1½ 550 (600-1½)	640-2 610 (700-2)	760-2½ 730 (800-2½)

SE-3, 22 FEB 2024 to 21 MAR 2024

SE-3, 22 FEB 2024 to 21 MAR 2024