


WAAS CH 97626 W26A	APP CRS 257°	Rwy Idg 10000 TDZE 27 Apt Elev 30
--	------------------------	--

RNAV (GPS) Z RWY 26

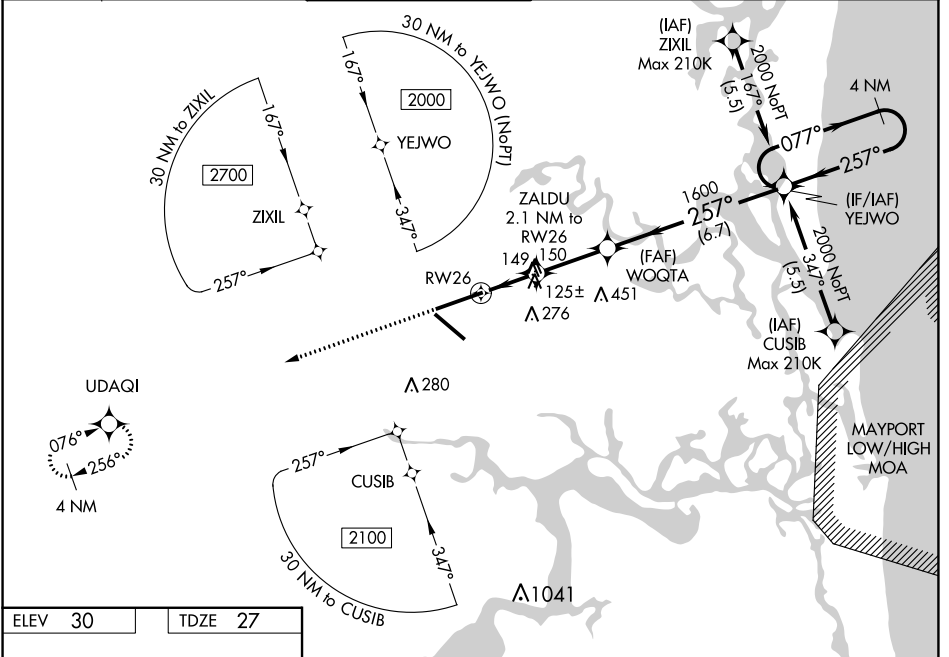
JACKSONVILLE INTL (JAX)

For uncompensated Baro-VNAV systems, LNAV/VNAV NA below -5°C (23°F) or above 54°C (130°F). For inoperative MALSR, increase LNAV/VNAV all Cats visibility to RVR 4500 and increase LNAV Cats C/D visibility to RVR 5500. DME/DME RNP-0.3 NA.

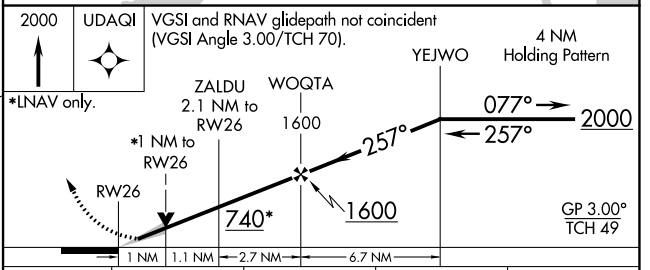
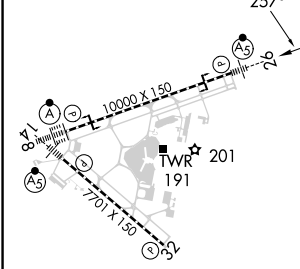
MALSR 

MISSED APPROACH: Climb to 2000 direct UDAQI and hold.

D-ATIS 125.85	JACKSONVILLE APP CON 119.0 269.9	JACKSONVILLE TOWER 118.3 317.7	GND CON 121.9 348.6	CLNC DEL 119.5 290.275	CPDLC
-------------------------	--	--	-------------------------------	----------------------------------	-------



ELEV 30	TDZE 27
---------	---------



CATEGORY	A	B	C	D
LPV DA	227/18		200 (200-½)	
LNAV/VNAV DA	297/24		270 (300-½)	
LNAV MDA	400/24 373 (400-½)		400/35 373 (400-¾)	
CIRCLING	520-1 490 (500-1)		580-1½ 640-2 550 (600-1½) 610 (700-2)	

REIL Rwy 32
TDZ/CL Rwys 8, 14, and 26
HIRL Rwys 8-26 and 14-32

SE-3, 22 FEB 2024 to 21 MAR 2024

SE-3, 22 FEB 2024 to 21 MAR 2024