

WAAS CH 53636 W04A	APP CRS 038°	Rwy Idg TDZE Apt Elev	3700 352 354
--	------------------------	-----------------------------	---

RNAV (GPS) RWY 4

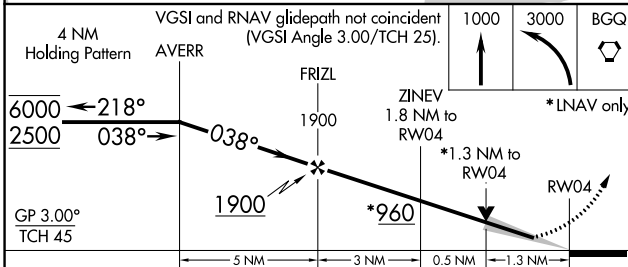
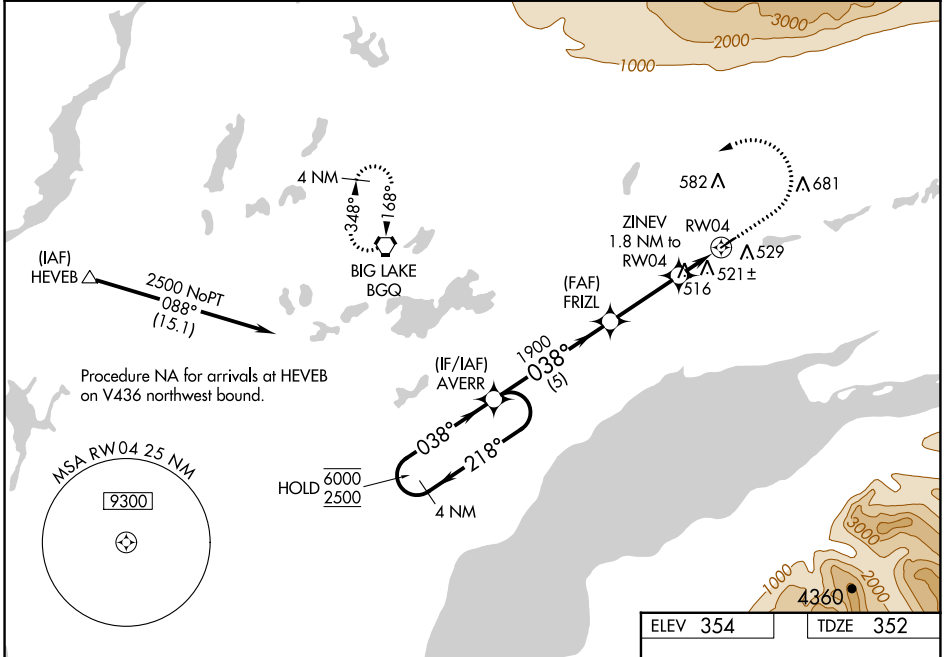
WASILLA (IYS) (PAWS)

RNP APCH.

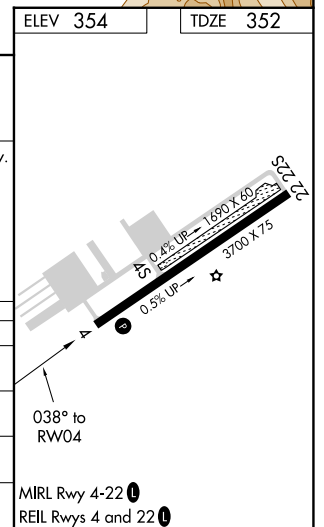
⚠ Circling NA to Rwy 4S and 22S. Baro-VNAV and VDP NA when using Palmer altimeter setting. For uncompensated Baro-VNAV systems, LNAV/VNAV NA below -20°C or above 54°C. When local altimeter setting not received, use Palmer altimeter setting and increase all DA 46 feet, all MDA 60 feet and all visibilities ¼ mile.

MISSED APPROACH: Climb to 1000 then climbing left turn to 3000 direct BGQ VORTAC and hold.

AWOS-3P 135.25	ANCHORAGE APP CON 119.1 363.2	CTAF 122.8
--------------------------	---	----------------------



CATEGORY	A	B	C	D
LPV DA	602-3/4	250 (300-3/4)		NA
LNAV/VNAV DA	828-1 5/8	476 (500-1 1/8)		NA
LNAV MDA	780-1	428 (500-1)		NA
C CIRCLING	1000-1	646 (700-1)		NA



AK, 25 JAN 2024 to 21 MAR 2024

AK, 25 JAN 2024 to 21 MAR 2024