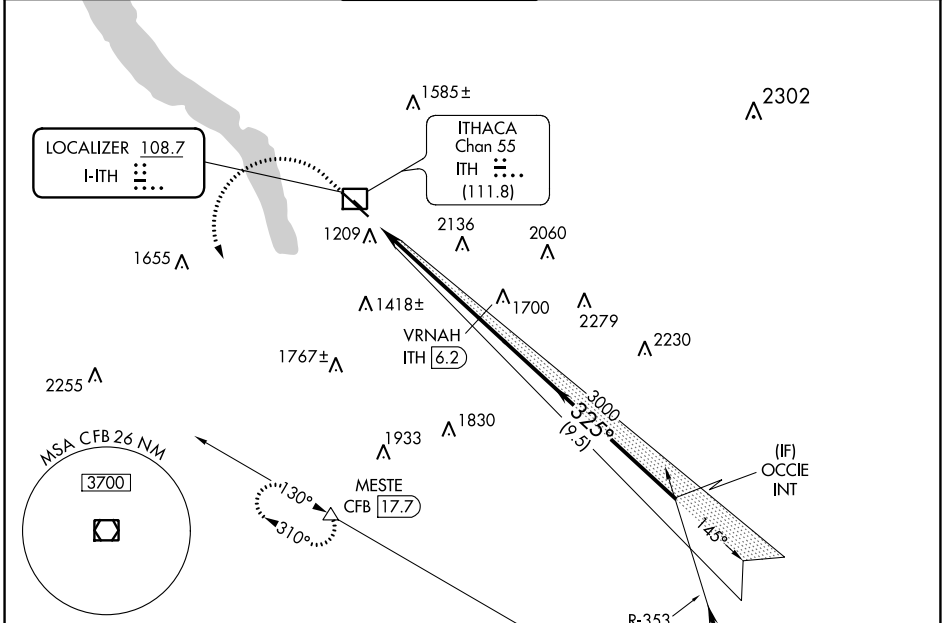


LOC I-ITH	APP CRS	Rwy Idg	6602
<b>108.7</b>	<b>325°</b>	TDZE	1099
		Apt Elev	1099

# ILS or LOC RWY 32

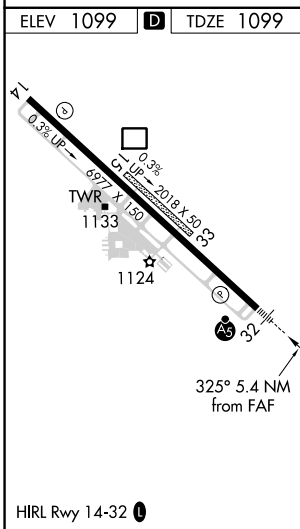
ITHACA TOMPKINS INTL (ITH)

DME required.		MALSR		MISSED APPROACH: Climb to 2600 then climbing left turn to 4000 on heading 180° and CFB VOR/DME R-310 to MESTE/CFB VOR/DME 17.7 DME and hold.	
<p>Circling NA to Rws 15 and 33. Inop table does not apply to S-ILS 32. DME from ITH DME. Simultaneous reception of I-ITH LOC and ITH DME required.</p> <p>-19°C</p>		<b>ITHACA TOWER ★</b> <b>119.6 (CTAF)</b>		GND CON	121.8
ATIS	ELMIRA APP CON ★	UNICOM	122.95	CLNC DEL	121.8
125.175	124.3 257.8				



NE-2, 22 FEB 2024 to 21 MAR 2024

NE-2, 22 FEB 2024 to 21 MAR 2024



Procedure NA for arrival on CFB VOR/DME airway radials 310 CW 015 and V374 northwest bound.

2600	4000	CFB R-310	MESTE	OCIE INT
↑	hdg 180°			
		VRNAH ITH 6.2	ITH 3.6	3400
		3000	3000	GS 3.20° TCH 54
		2.9 NM	2.6 NM	9.5 NM

CATEGORY	A	B	C	D
S-ILS 32	1349/24		250 (300-1/2)	
S-LOC 32	2140/40 1041 (1100-3/4)	2140/55 1041 (1100-1)	2140-2 1/2 1041 (1100-2 1/2)	
CIRCLING	2140-1 1/4 1041 (1100-1 1/4)	2140-1 1/2 1041 (1100-1 1/2)	2140-3 1041 (1100-3)	2440-3 1341 (1400-3)