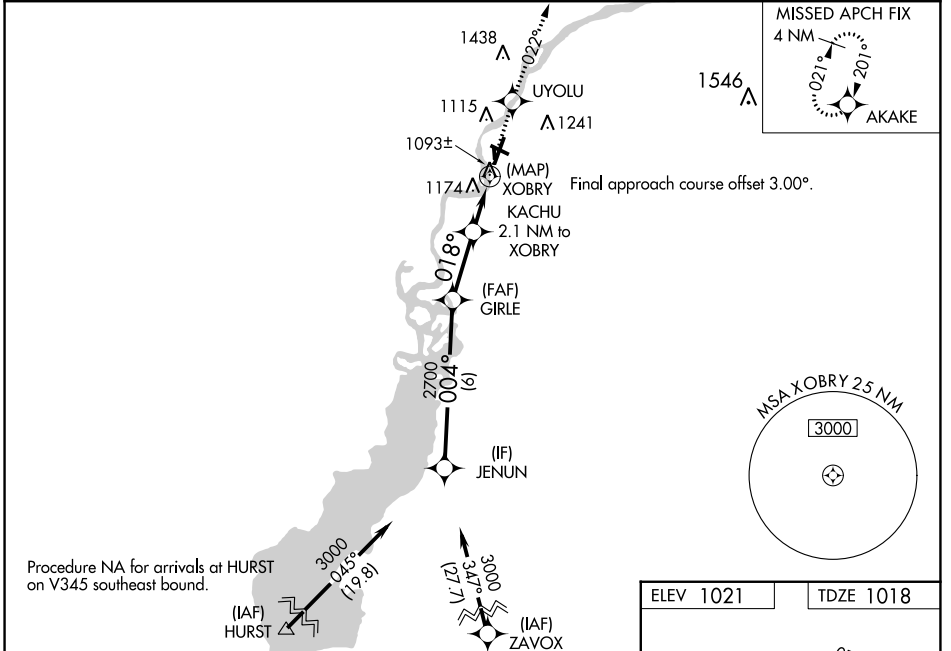


WAAS CH <b>77731</b> <b>W02A</b>	APP CRS <b>018°</b>	Rwy Idg TDZE Apt Elev	<b>5500</b> <b>1018</b> <b>1021</b>
--	------------------------	-----------------------------	---

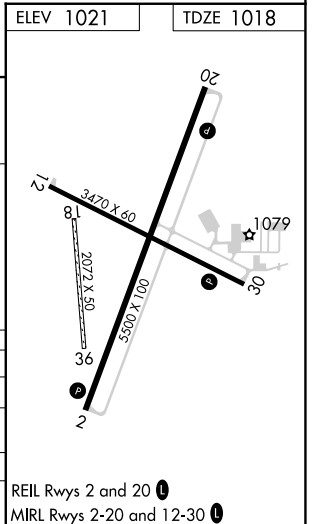
# RNAV (GPS) RWY 2

ALEXANDER FLD SOUTH WOOD COUNTY (ISW)

RNP APCH - GPS.		MISSED APPROACH: Climb to 3000 direct UYOLU and on track 022° to AKAKE and hold.
ASOS <b>126.575</b>	MINNEAPOLIS CENTER <b>124.4 317.7</b>	UNICOM <b>122.8 (CTAF) 0</b>



VGS1 and RNAV glidepath not coincident (VGS1 Angle 3.00/TCH 35).		3000	UYOLU	tr 022°	AKAKE
JENUN	GIRLE	KACHU	XOBRY	XOBRY	
3000	2700	1880			
GP 3.00°	004°	018°			
TCH 50	6 NM	2.6 NM	1.4	0.7	0.5
CATEGORY	A	B	C	D	
LPV DA	1298-1		280 (300-1)		
LNAV/VNAV DA	1493-1 3/8		475 (500-1 3/8)		
LNAV MDA	1440-1	422 (500-1)	1440-1 1/4	422 (500-1 1/4)	
CIRCLING	1480-1 459 (500-1)	1560-1 539 (600-1)	1620-1 1/2 599 (600-1 1/2)	1800-2 1/2 779 (800-2 1/2)	



EC-3, 22 FEB 2024 to 21 MAR 2024

EC-3, 22 FEB 2024 to 21 MAR 2024