

WAAS CH 82004 W05A	APP CRS 050°	Rwy ldg 10960 TDZE 93 Apt Elev 93
----------------------------------------	------------------------	--------------------------------------------------------------

RNAV (GPS) RWY 5

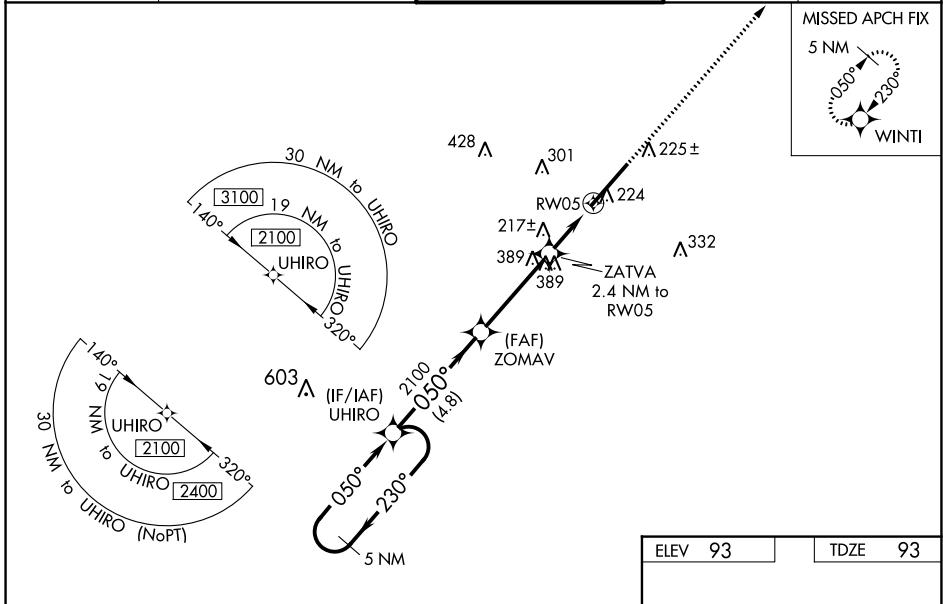
KINSTON RGNL JETPORT AT STALLINGS FLD (ISO)

⚠ Baro-VNAV NA when using Seymour Johnson AFB altimeter setting. For uncompensated Baro-VNAV systems, LNAV/VNAV NA below -15°C (5°F) or above 54°C (130°F).
⚠ DME/DME RNP-0.3 NA. VDP NA when using Seymour Johnson AFB altimeter setting. When local altimeter setting not received, use Seymour Johnson AFB altimeter setting and increase all DAs 43 feet and all MDAs 60 feet. Increase LNAV/VNAV all Cats visibility to RVR 2600, increase LNAV Cats C and D visibility to RVR 4000, and Circling Cat D visibility to 2¼mile. For inop MALSR, increase LNAV/VNAV all Cats visibility to RVR 4500 and LNAV Cats A and B visibility to RVR 5500 and Cats C and D to RVR 6000. For inop MALSR when using Seymour Johnson AFB altimeter setting, increase LNAV Cats A and B visibility to RVR 5500 and Cats C and D to 1½ mile.

MALSR

MISSED APPROACH: Climb to 2500 direct WINTI and hold.

AWOS-3 132.75	SEYMOUR JOHNSON APP CON * 127.3 273.6	KINSTON TOWER * 120.6 (CTAF) 0 335.55	GND CON 121.9	UNICOM 122.95
-------------------------	-------------------------------------------------	--------------------------------------------------------	-------------------------	-------------------------



SE-2, 22 FEB 2024 to 21 MAR 2024

SE-2, 22 FEB 2024 to 21 MAR 2024

5 NM Holding Pattern		UHIRO	ZOMAV	ZATVA	RW05	2500 WINTI
2100 ← 230°		2100	2100	2100	2100	*LNAV only.
050° →						
GP 3.00° TCH 59				*1 NM to RW05	*900	
		4.8 NM	3.7 NM	1.4 NM	1 NM	

CATEGORY	A	B	C	D
LPV DA		293/24	200 (200-½)	
LNAV/VNAV DA		368/24	275 (300-½)	
LNAV MDA	480/24	387 (400-½)	480/35	387 (400-⅝)
C CIRCLING	580-1	487 (500-1)	700-1¾ 607 (700-1¾)	740-2 647 (700-2)

ELEV 93	TDZE 93
---------	---------

REIL Rwy 23 **0**
HIRL Rwy 5-23 **0**

RNAV (GPS) RWY 5