

WAAS CH <b>97612</b> <b>W31A</b>	APP CRS <b>309°</b>	Rwy Idg TDZE Apt Elev	<b>5500</b> <b>2025</b> <b>2032</b>
--	------------------------	-----------------------------	---

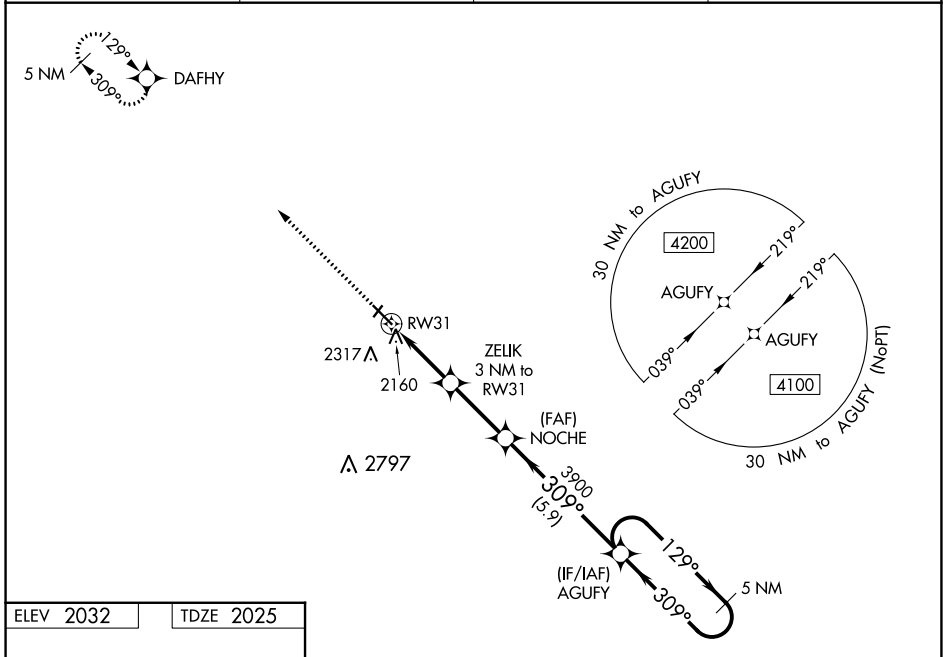
# RNAV (GPS) RWY 31

WINNER RGNL (ICR)

**⚠** Circling NA to Rws 3 and 21. For uncompensated Baro-VNAV systems, LNAV/VNAV NA below -24° C (-11°F) or above 54°C (130°F). DME/DME RNP-0.3 NA. Baro-VNAV and VDP NA when using Valentine altimeter setting. When local altimeter setting not received, use Valentine, NE altimeter setting and increase LPV DA to 2514, LNAV/VNAV DA to 2549 and all visibilities 7/8 mile, increase all MDA 240 feet; increase Cat B visibility 1/4 mile and Cat C 1 mile.

**⚠** MISSED APPROACH: Climb to 4100 direct DAFHY and hold.

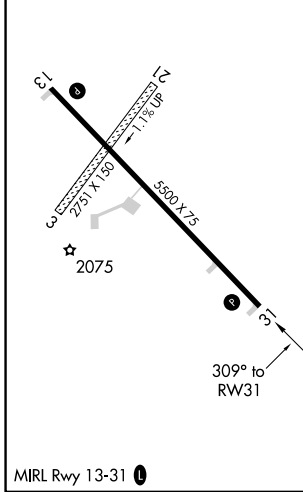
ASOS <b>126.775</b>	MINNEAPOLIS CENTER <b>125.1 269.1</b>	GCO <b>121.725</b>	UNICOM <b>122.8 (CTAF) 0</b>
------------------------	--	-----------------------	---------------------------------



NC-1, 22 FEB 2024 to 21 MAR 2024

NC-1, 22 FEB 2024 to 21 MAR 2024

ELEV 2032	TDZE 2025
-----------	-----------



4100	DAFHY	AGUFY 5 NM Holding Pattern			
*LNAV only	ZELIK 3 NM to RW31	NOCHE 3900	AGUFY 4100		GP 3.00° TCH 32
	*1.1 NM to RW31	3900	129°	309°	
	1.1 NM	1.9 NM	2.8 NM	5.9 NM	
CATEGORY	A	B	C	D	
LPV DA	2275-1 250 (300-1)			NA	
LNAV/VNAV DA	2310-1 285 (300-1)			NA	
LNAV MDA	2420-1	395 (400-1)	2420-1 1/8	395 (400-1 1/8)	NA
<b>C</b> CIRCLING	2580-1	2680-1	2680-1 3/4	648 (700-1 3/4)	NA
	548 (600-1)	648 (700-1)	648 (700-1 3/4)		