

COATT FIVE ARRIVAL

POTOMAC APP CON
128.525 306.925
D-ATIS
134.85



ARMEL
113.5
AML
Chan 82

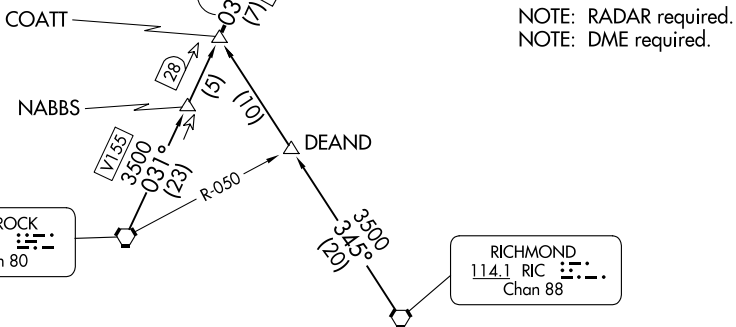
CASANOVA
116.3 CSN
Chan 110

BROOKE
114.5 BRV
Chan 92

USE FAK 031 TO BRV,
BRV 214 UNUSEABLE TO
FALCO.

FALCO
TURBOJET VERTICAL NAVIGATION
PLANNING INFORMATION
Expect 10000 and 250K.

BARIN
TURBOJET VERTICAL NAVIGATION
PLANNING INFORMATION
Expect 5000.



NOTE: RADAR required.
NOTE: DME required.

NOTE: Chart not to scale.

FLAT ROCK TRANSITION (FAK.COATT5): From over FAK VORTAC on FAK R-031 to COATT. Thence

RICHMOND TRANSITION (RIC.COATT5): From over RIC VORTAC on RIC R-345 to COATT. Thence

. . . . From over COATT on FAK R-031 to BRV VORTAC, then on BRV R-007 to BARIN. Expect radar vectors to final approach course after BARIN.