

VOR/DME ZZV 114.95 Chan 96(Y)	APP CRS 229°	Rwy Idg TDZE Apt Elev	3498 1047 1051
---	------------------------	-----------------------------	---

VOR/DME RWY 26

PERRY COUNTY (I86)

NA Visibility reduction by helicopters NA. Use Zanesville altimeter setting; when not received, use Lancaster altimeter setting and increase all MDA 20 feet. Procedure NA at night.

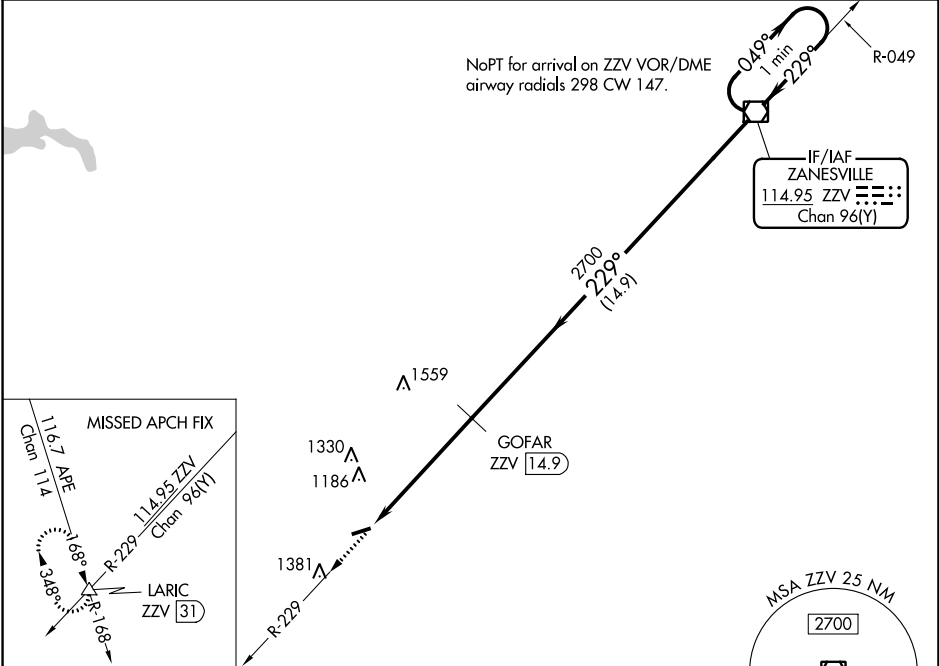
MISSED APPROACH: Climb to 3000 via ZZV VOR/DME R-229 to LARIC INT/ZZV 31 DME and hold.

INDIANAPOLIS CENTER
124.45 323.275

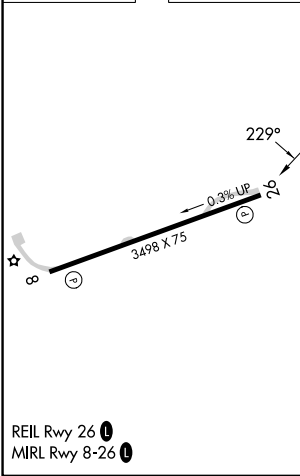
UNICOM
122.8 (CTAF)

NoPT for arrival on ZZV VOR/DME airway radials 298 CW 147.

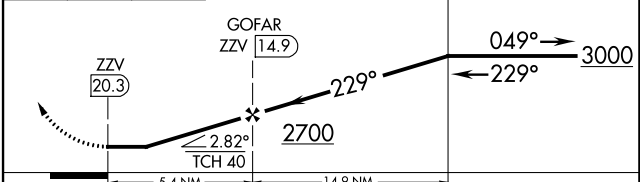
IF/IAF
ZANESVILLE
114.95 ZZV
Chan **96(Y)**



ELEV 1051 TDZE 1047



3000 ↑ ZZV R-229 LARIC △ ZZV 31 VGSI and descent angles not coincident (VGSI Angle 4.00/TCH 28). ZZV VOR/DME One Minute Holding Pattern



CATEGORY	A	B	C	D
S-26	1620-1 573 (600-1)	1620-1¼ 573 (600-1¼)	1620-1½ 573 (600-1½)	NA
CIRCLING	1620-1 569 (600-1)	1620-1¼ 569 (600-1¼)	1620-1½ 569 (600-1½)	NA

EC-2, 22 FEB 2024 to 21 MAR 2024

EC-2, 22 FEB 2024 to 21 MAR 2024