

APP CRS <b>014°</b>	Rwy Idg <b>3333</b>
	TDZE <b>912</b>
	Apt Elev <b>912</b>

# RNAV (GPS) RWY 36

GREENSBURG MUNI (I34)

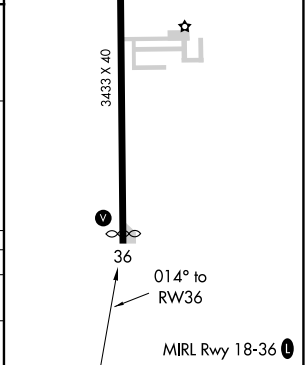
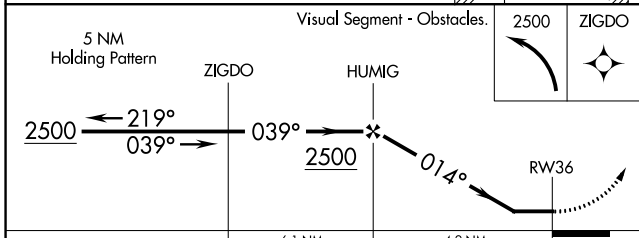
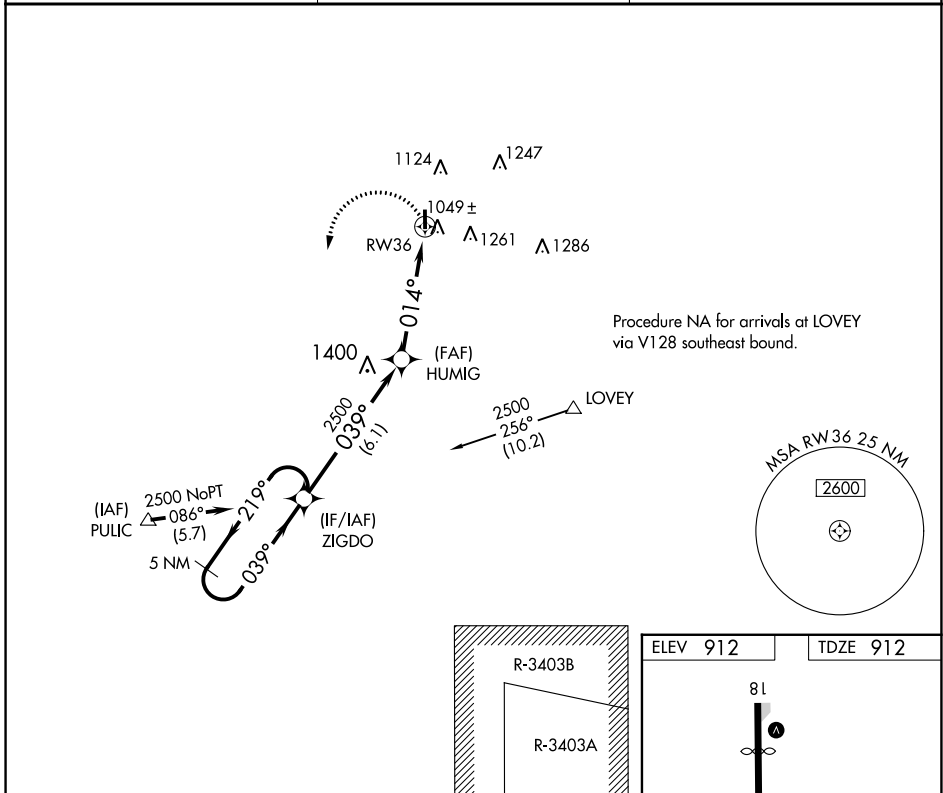
RNP APCH - GPS.

**▽** Use Columbus Muni altimeter setting; if not received, use Indianapolis Intl altimeter setting and increase all MDAs 40 feet and increase LNAV visibility Cat C ½ SM.

**△** NA Circling Rwy 18 NA at night. Rwy 36 helicopter visibility reduction below ¾ SM NA.

**MISSED APPROACH:**  
Climbing left turn to 2500  
direct ZIGDO and hold.

BAK AWOS-3 <b>119.75</b>	INDIANAPOLIS APP CON <b>127.15</b>	CTAF <b>122.9</b>
-----------------------------	---------------------------------------	----------------------



CATEGORY	A	B	C	D
LNAV MDA	1560-1	648 (700-1)	1560-1 7/8 648 (700-1 7/8)	NA
<b>C</b> CIRCLING	1680-1 768 (800-1)	1680-1 1/4 768 (800-1 1/4)	1680-2 1/4 768 (800-2 1/4)	NA

EC-2, 22 FEB 2024 to 21 MAR 2024

EC-2, 22 FEB 2024 to 21 MAR 2024

VOR/DME SHB <b>116.15</b> Chan <b>108 (Y)</b>	APP CRS <b>142°</b>	Rwy Idg TDZE Apt Elev	<b>N/A</b> <b>N/A</b> <b>912</b>
---	------------------------	-----------------------------	--

**VOR-A**

GREENSBURG MUNI (I34)

**▼** Use Columbus Muni altimeter setting; if not received, use Indianapolis Intl altimeter setting and increase all MDAs 40 feet. Circling Rwy 18 NA at night. Rwy 18 helicopter visibility reduction below 1 SM NA.

**▲ NA** MISSED APPROACH: Climb to 2000 then climbing right turn to 2700 via SHB R-142 to APODD INT/SHB 18 DME/RADAR and hold.

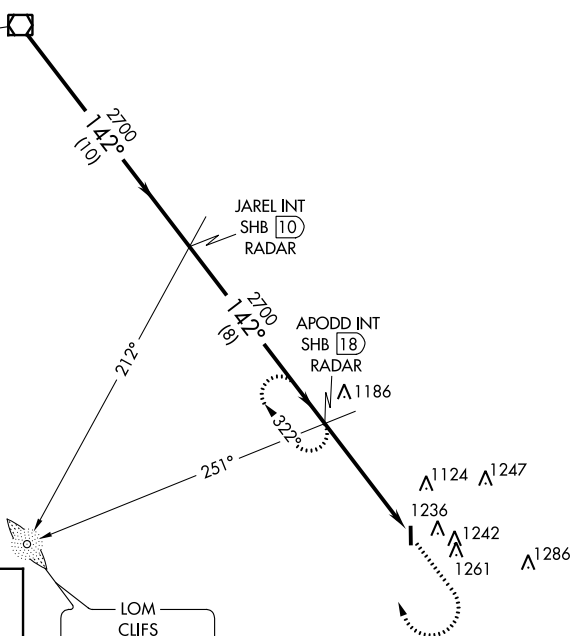
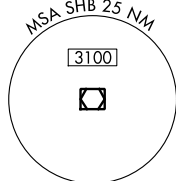
BAK AWOS-3 <b>119.75</b>	INDIANAPOLIS APP CON <b>127.15</b>	CTAF <b>122.9 0</b>
-----------------------------	---------------------------------------	------------------------

**Λ** 1542

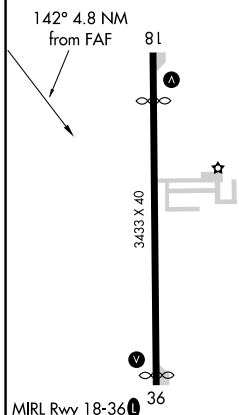
**ADF, DME or RADAR REQUIRED**

IAF  
SHELBYVILLE  
116.15 SHB  
Chan 108 (Y)

Procedure NA for arrival on SHB VOR/DME airway radials 124 CW 171.

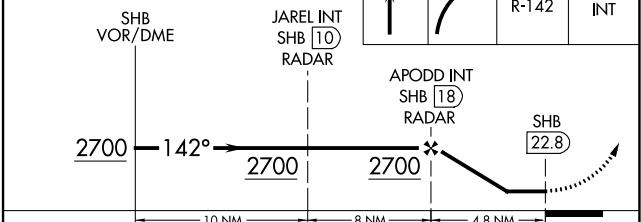


ELEV 912



LOM  
CLIFS  
410 BA

2000	2700	SHB R-142	APODD INT
------	------	-----------	-----------



FAF to MAP 4.8 NM					CATEGORY	A	B	C	D
Knots	60	90	120	150	180	1680-1	1680-1¼	1680-2¼	NA
Min:Sec	4:48	3:12	2:24	1:55	1:36	768 (800-1)	768 (800-1¼)	768 (800-2¼)	