

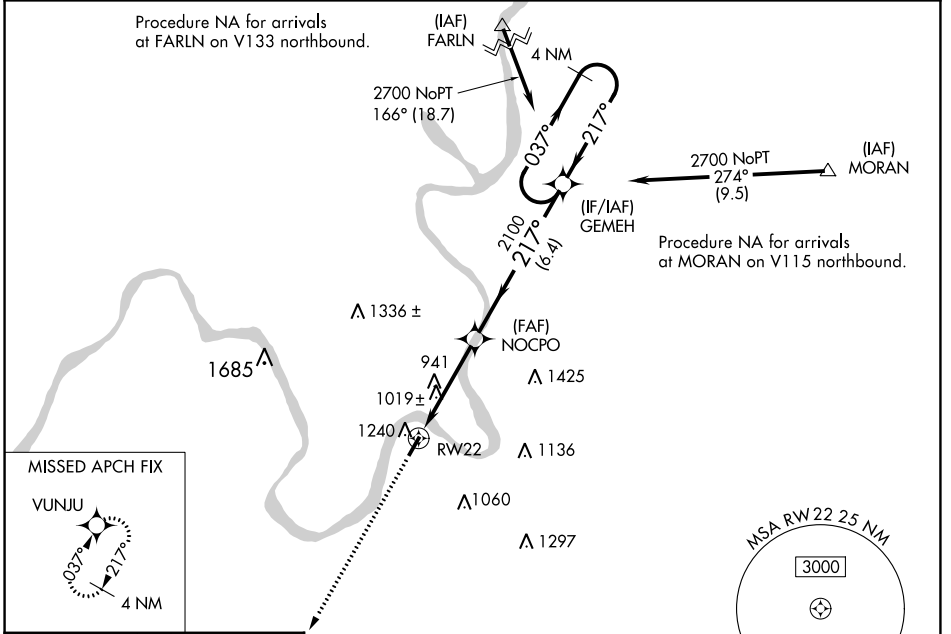
WAAS CH <b>61323</b> <b>W22A</b>	APP CRS <b>217°</b>	Rwy Idg TDZE <b>758</b> Apt Elev <b>758</b>	<b>4000</b>
--	------------------------	---	-------------

# RNAV (GPS) RWY 22

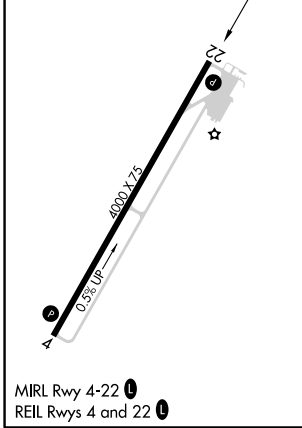
JACKSON COUNTY (I18)

RNP APCH.	When local altimeter setting not received, use Point Pleasant altimeter setting and increase all MDA 60 feet; increase LP and LNAV Cat C visibility ¼ mile. Circling Rwy 4 NA at night. Rwy 22 helicopter visibility reduction below ¾ SM NA.	MISSED APPROACH: Climb to 2600 direct VUNJU and hold.
-----------	---	--

AWOS-2 <b>121.3</b>	HUNTINGTON APP CON <b>128.4 270.1</b>	UNICOM <b>122.8 (CTAF) 0</b>
------------------------	--	---------------------------------



ELEV 758	TDZE 758
----------	----------



2600	VUNJU	VGSI and descent angles not coincident (VGSI Angle 4.00/TCH 50).		4 NM Holding Pattern																				
<table border="1"> <thead> <tr> <th>CATEGORY</th> <th>A</th> <th>B</th> <th>C</th> <th>D</th> </tr> </thead> <tbody> <tr> <td>LP MDA</td> <td>1280-1</td> <td>522 (600-1)</td> <td>1280-1½ 522 (600-1½)</td> <td>NA</td> </tr> <tr> <td>LNAV MDA</td> <td>1540-1 782 (800-1)</td> <td>1540-1¼ 782 (800-1¼)</td> <td>1540-2½ 782 (800-2½)</td> <td>NA</td> </tr> <tr> <td>CIRCLING</td> <td>1600-1¼</td> <td>842 (900-1¼)</td> <td>1600-2½ 842 (900-2½)</td> <td>NA</td> </tr> </tbody> </table>					CATEGORY	A	B	C	D	LP MDA	1280-1	522 (600-1)	1280-1½ 522 (600-1½)	NA	LNAV MDA	1540-1 782 (800-1)	1540-1¼ 782 (800-1¼)	1540-2½ 782 (800-2½)	NA	CIRCLING	1600-1¼	842 (900-1¼)	1600-2½ 842 (900-2½)	NA
CATEGORY	A	B	C	D																				
LP MDA	1280-1	522 (600-1)	1280-1½ 522 (600-1½)	NA																				
LNAV MDA	1540-1 782 (800-1)	1540-1¼ 782 (800-1¼)	1540-2½ 782 (800-2½)	NA																				
CIRCLING	1600-1¼	842 (900-1¼)	1600-2½ 842 (900-2½)	NA																				

NE-4, 22 FEB 2024 to 21 MAR 2024

NE-4, 22 FEB 2024 to 21 MAR 2024

APP CRS	Rwy Idg	<b>4000</b>
<b>037°</b>	TDZE	<b>753</b>
	Apt Elev	<b>758</b>

# RNAV (GPS) RWY 4

JACKSON COUNTY (I18)

RNP APCH - GPS.

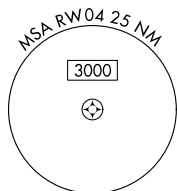
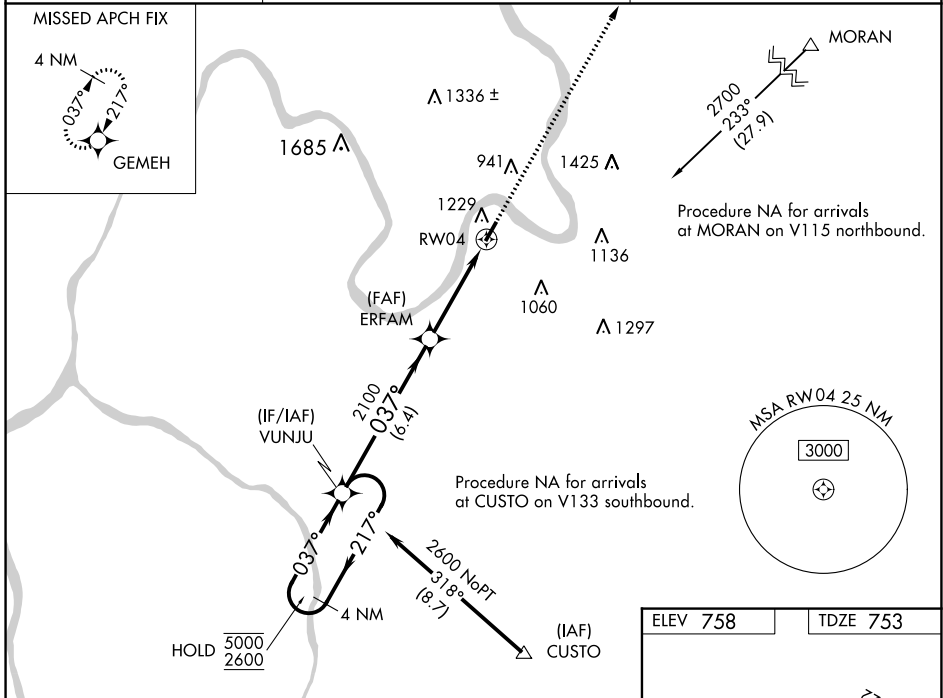
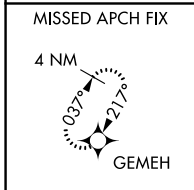
**▽** Rwy 4 helicopter visibility reduction below 1 SM NA. When local altimeter setting not received, use Point Pleasant altimeter setting and increase all MDA 60 feet; increase LNAV Cat C visibility  $\frac{1}{8}$  SM and Circling Cat C visibility  $\frac{1}{4}$  SM. Straight-in Rwy 4 NA at night, Circling Rwy 4 NA at night.

**MISSED APPROACH:**  
Climb to 2700 direct GEMEH and hold.

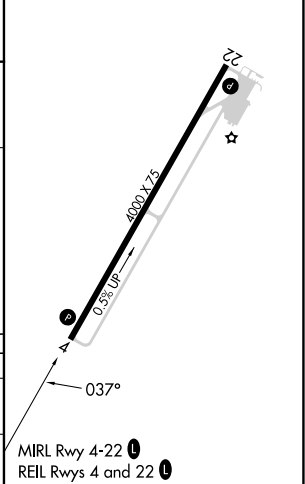
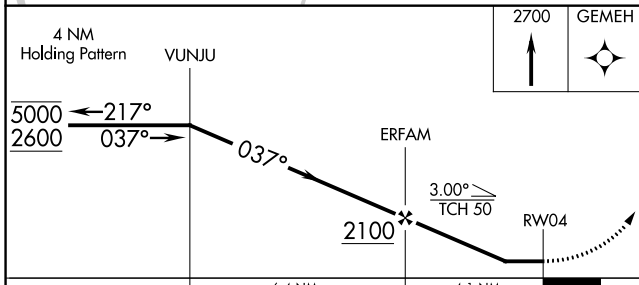
AWOS-2  
**121.3**

HUNTINGTON APP CON  
**128.4 270.1**

UNICOM  
**122.8 (CTAF) 0**



ELEV 758	TDZE 753
----------	----------



CATEGORY	A	B	C	D
LNAV MDA	1400-1	647 (700-1)	1400- $1\frac{7}{8}$ 647 (700- $1\frac{7}{8}$ )	NA
CIRCLING	1600- $1\frac{1}{4}$	842 (900- $1\frac{1}{4}$ )	1600- $2\frac{1}{2}$ 842 (900- $2\frac{1}{2}$ )	NA

NE-4, 22 FEB 2024 to 21 MAR 2024

NE-4, 22 FEB 2024 to 21 MAR 2024