

PIQUA, OHIO

AL-5022 (FAA)

21336

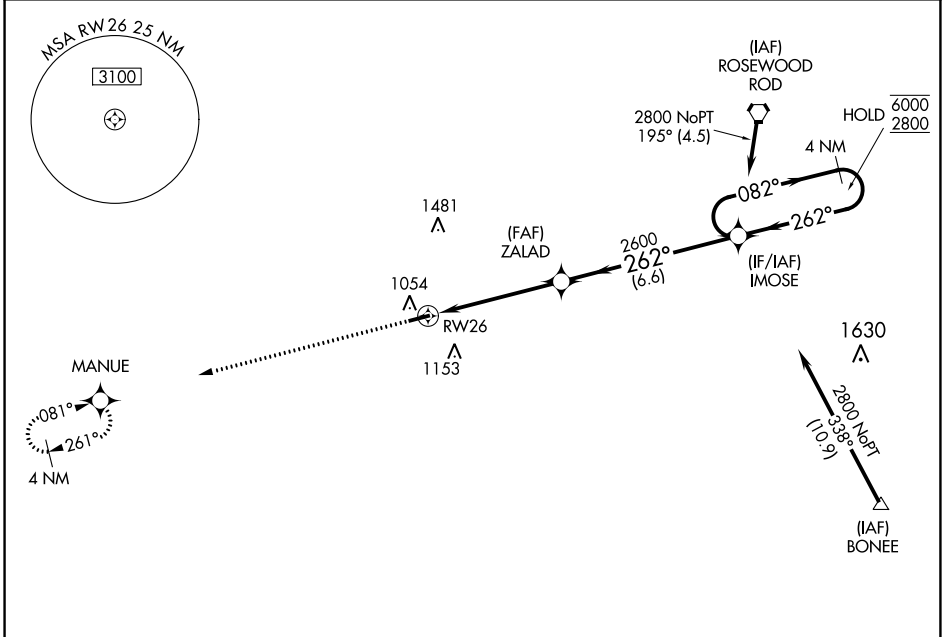
APP CRS	Rwy Idg	<b>3998</b>
<b>262°</b>	TDZE	<b>986</b>
	Apt Elev	<b>993</b>

# RNAV (GPS) RWY 26

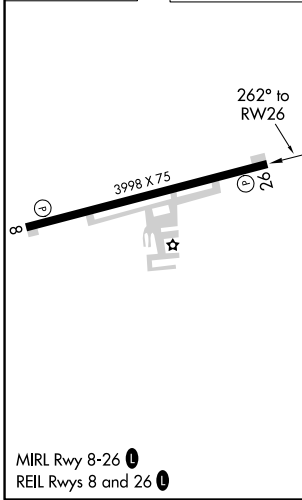
PIQUA/HARTZELL FLD (I17)

RNP APCH.	MISSED APPROACH: Climb to 2700 direct MANUE and hold.
NA	Use James M Cox Dayton Intl altimeter setting.

DAY ASOS <b>125.8</b>	COLUMBUS APP CON <b>118.425 294.5 352.05</b>	UNICOM <b>123.0 (CTAF)</b>
--------------------------	---	-------------------------------



ELEV 993	TDZE 986
----------	----------



2700	MANUE	IMOSE 4 NM Holding Pattern			
		ZALAD	2600	082°	6000
		RW26	262°	262°	2800
		4.9 NM	6.6 NM		
		3.00°	TCH 40		
CATEGORY	A	B	C	D	
LNAV MDA	1500-1	514 (600-1)	1500-1 $\frac{3}{8}$	514 (600-1 $\frac{1}{2}$ )	
CIRCLING	1500-1	1560-1	1560-1 $\frac{1}{2}$	1880-3	
	507 (600-1)	567 (600-1)	567 (600-1 $\frac{1}{2}$ )	887 (900-3)	

PIQUA, OHIO  
Orig-D 20JUN19

40°10'N-84°19'W

# RNAV (GPS) RWY 26

EC-2, 19 MAY 2022 to 16 JUN 2022

EC-2, 19 MAY 2022 to 16 JUN 2022

APP CRS	Rwy Idg	<b>3998</b>
<b>081°</b>	TDZE	<b>993</b>
	Apt Elev	<b>993</b>

# RNAV (GPS) RWY 8

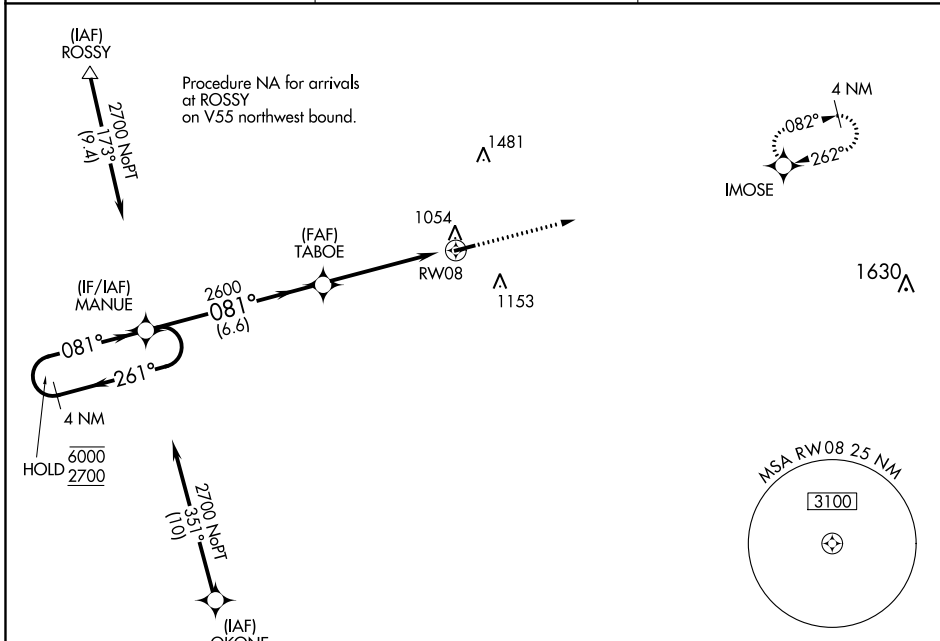
PIQUA/HARTZELL FLD (I17)

RNP APCH.

Use James M Cox Dayton Intl altimeter setting. Rwy 8 helicopter visibility reduction below 3/4 SM NA.

MISSED APPROACH: Climb to 2700 direct IMOSE and hold.

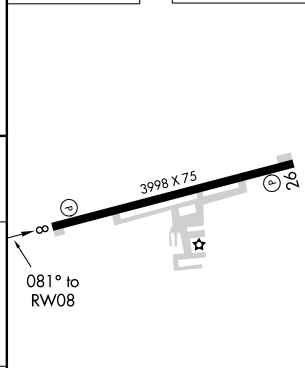
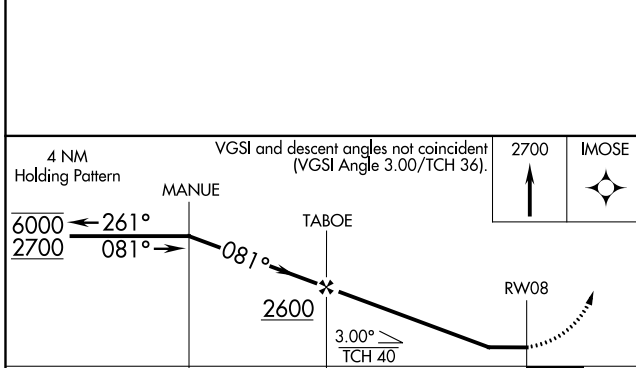
DAY ASOS <b>125.8</b>	COLUMBUS APP CON <b>118.425 294.5 352.05</b>	UNICOM <b>123.0 (CTAF)</b>
--------------------------	---	-------------------------------



EC-2, 19 MAY 2022 to 16 JUN 2022

EC-2, 19 MAY 2022 to 16 JUN 2022

ELEV 993	TDZE 993
----------	----------



CATEGORY	A	B	C	D
LNVA MDA	1480-1	487 (500-1)	1480-1 3/8	487 (500-1 3/8)
CIRCLING	1480-1 487 (500-1)	1560-1 567 (600-1)	1560-1 1/2 567 (600-1 1/2)	1880-3 887 (900-3)

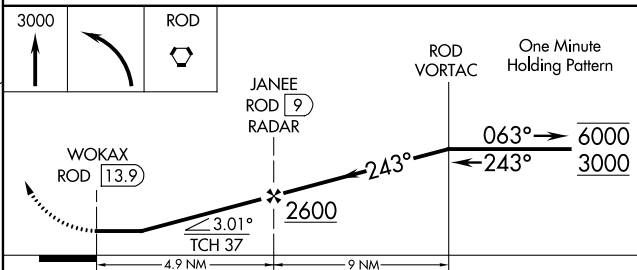
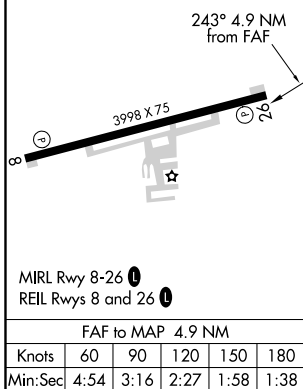
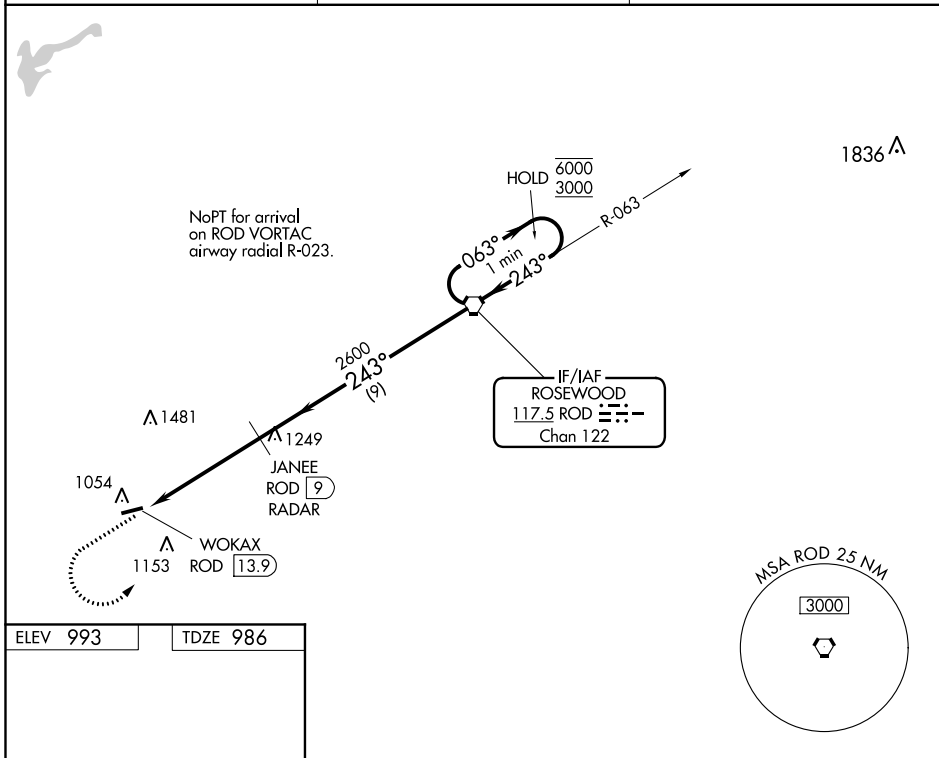
MIRL Rwy 8-26

REIL Rwy 8 and 26

VORTAC ROD <b>117.5</b> Chan <b>122</b>	APP CRS <b>243°</b>	Rwy Idg TDZE Apt Elev	<b>3998</b> <b>986</b> <b>993</b>
---	------------------------	-----------------------------	---

**VOR RWY 26**  
PIQUA/HARTZELL FLD (I17)

DME or RADAR required.		MISSED APPROACH: Climb to 3000 then left turn direct ROD VORTAC and hold.
▼ Rwy 26 helicopter visibility reduction below 3/4 SM NA. ▲ NA Use James M Cox Dayton Intl altimeter setting.		
DAY ASOS <b>125.8</b>	COLUMBUS APP CON <b>118.425 294.5 352.05</b>	UNICOM <b>123.0 (CTAF) 0</b>



CATEGORY	A	B	C	D
S-26	1500-1	514 (600-1)	1500-1 3/8	514 (600-1 3/8)
<input checked="" type="checkbox"/> CIRCLING	1500-1 507 (600-1)	1560-1 567 (600-1)	1560-1 1/2 567 (600-1 1/2)	1880-3 887 (900-3)

EC-2, 19 MAY 2022 to 16 JUN 2022

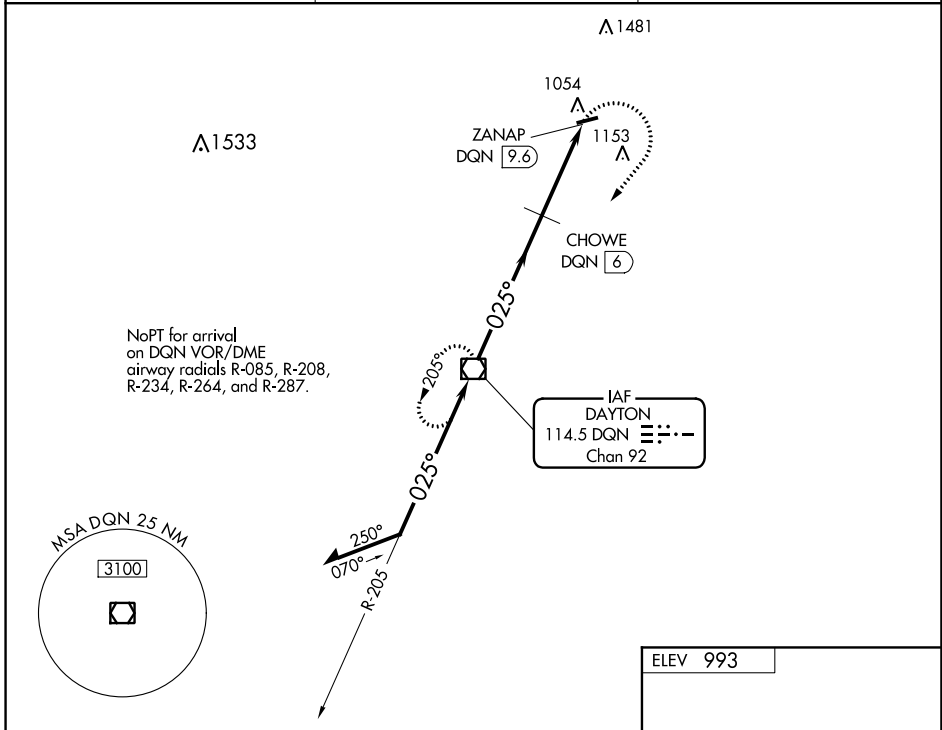
EC-2, 19 MAY 2022 to 16 JUN 2022

VOR/DME DGN <b>114.5</b> Chan <b>92</b>	APP CRS <b>025°</b>	Rwy Idg TDZE Apt Elev <b>N/A</b> <b>N/A</b> <b>993</b>
---	------------------------	---

**VOR-A**  
PIQUA/HARTZELL FLD (I17)

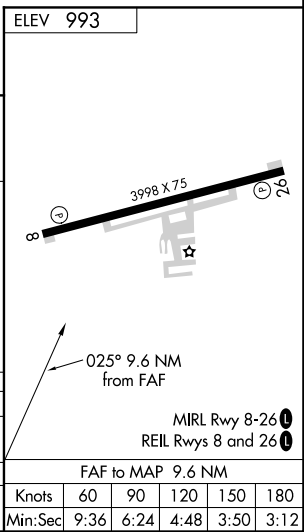
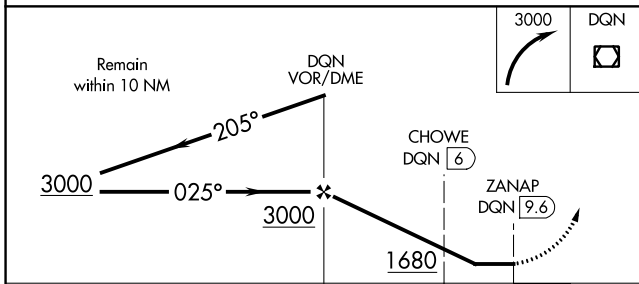
<b>▽</b> <b>▲</b> NA	Use James M Cox Dayton Intl altimeter setting.	MISSED APPROACH: Climbing right turn to 3000 direct DGN VOR/DME and hold.
-------------------------	--	---

DAY ASOS <b>125.8</b>	COLUMBUS APP CON <b>118.425 294.5 352.05</b>	UNICOM <b>123.0</b> (CTAF) <b>①</b>
--------------------------	---	--



EC-2, 19 MAY 2022 to 16 JUN 2022

EC-2, 19 MAY 2022 to 16 JUN 2022



CATEGORY	A	B	C	D
<b>④</b> CIRCLING	1680-1 507 (600-1)	687 (700-1)	1680-2 687 (700-2)	1880-3 887 (900-3)
CHOWE FIX MINIMUMS (DME REQUIRED)				
<b>④</b> CIRCLING	1500-1 507 (600-1)	1560-1 567 (600-1)	1560-1½ 567 (600-1½)	1880-3 887 (900-3)

FAF to MAP 9.6 NM		Knots	60	90	120	150	180
		Min:Sec	9:36	6:24	4:48	3:50	3:12